



Since 1907

ACME METAL MOLDING COMPANY

ALUMINUM ENTRANCES



ACME METAL MOLDING COMPANY

As a subsidiary of Northrop Corporation, one of the largest aerospace corporations in the United States, Acme Metal Molding Company now embarks upon a new and more spacious era in its 54 year history. Acme has attained its position as one of the nation's major manufacturers of architectural aluminum through steadfast pursuit of the two basic fundamentals: constant product improvement and exceptional service.

This summarized catalog describes Acme entrances: you will find Acme's aluminum storefront also in A.E.C., 20/AC. On the facing page we have illustrated some of those features which distinguish Acme entrances and storefront aluminum. We think professional consideration will recognize our points. With the many new developments in Acme's production, including our large new catalog, it is important for you to keep in touch. Please mail the reply card to check your firm's name on Acme's mailing list.

Subsidiary of Northrop Corporation



Norair Division



FREEDOM OF DESIGN — AN ARCHITECTURAL MUST

The architect is free to create as he needs; his designs are given accurate reality in Acme architectural aluminum. Acme narrow-line flush glazed framing provides a full range of visual weight in 3", 4" or 5" narrow-line tubing, more sizes in split tubes. Square stops or beveled stops, narrow stile or wide stile doors, extra tall doors, extra large doors...your ideas come to life with Acme aluminum.

OUR EXTRAS IN QUALITY CHALLENGE COMPARISON

Acme tubing is designed to be nearly twice as thick at points of fastening. Our aero-construction door corners are still solid when deep-weld corners are torn apart. Painstaking, inspected buffing insures a custom matte finish, aluminized for durability. Ingenious snap-on designs speed work, present cleaner lines and greater flexibility. Acme proves extra quality, point by point.

FREEDOM OF CHOICE AMONG THE FINEST

In door controls you want the best for your client...best in quality, best in cost. Acme offers you your choice from the leading manufacturers. We believe automatic entrances should be handled by specialists in this field, and recommend outstanding manufacturers with proven products. An extra-large choice of hardware and locks is available from Acme, and always superlative.

3 complete flush-glazing systems



fin tubes



and many others



13c
AC

square stops or beveled stops



centerhung or offset



narrow stile



wide stile



standard doors



extra-tall doors



extra-large doors



extra thickness at key points



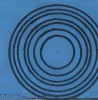
tested and proven strength



up to twice the strength of welded doors



buffed and aluminized finish

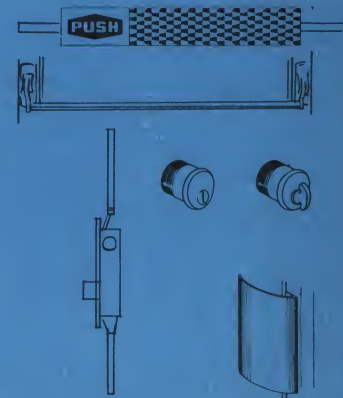


snap together tubes and sash

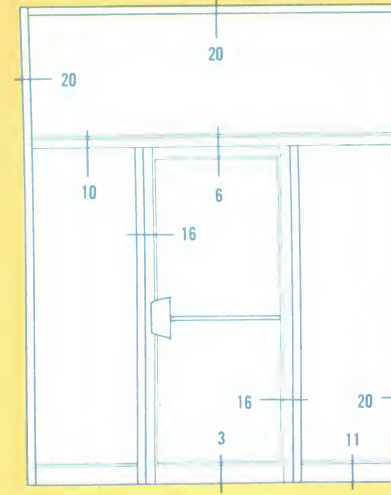
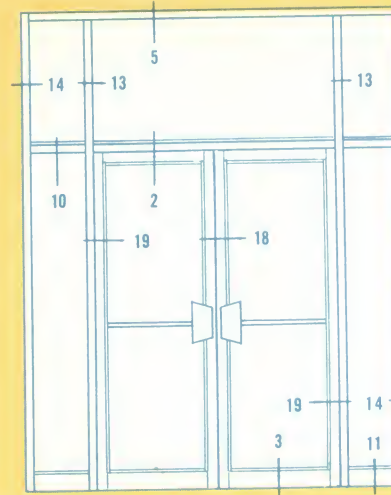
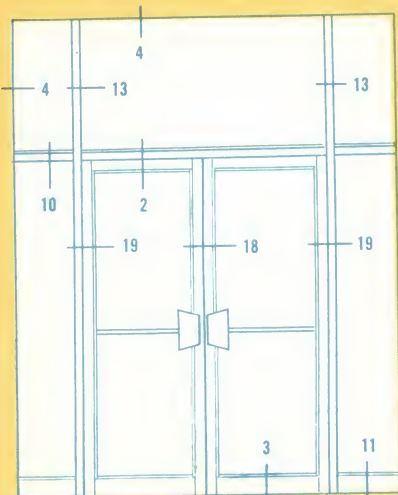
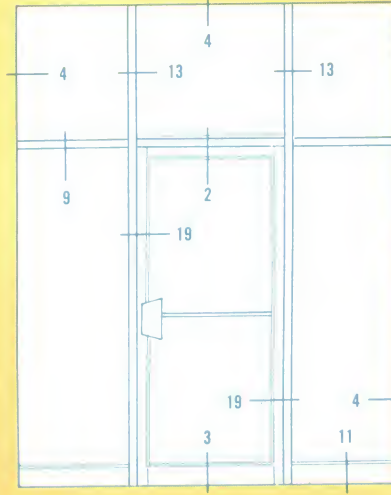
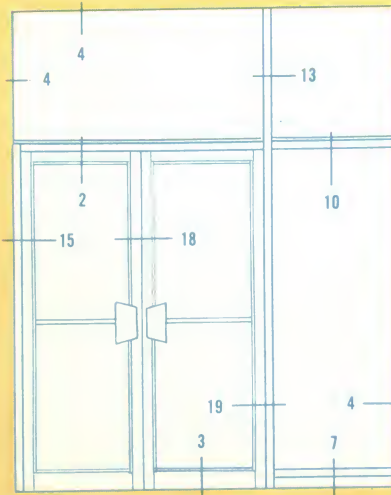
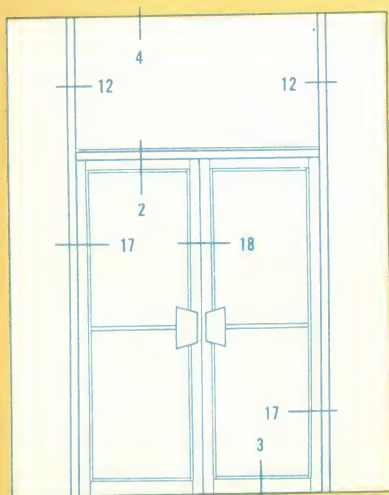
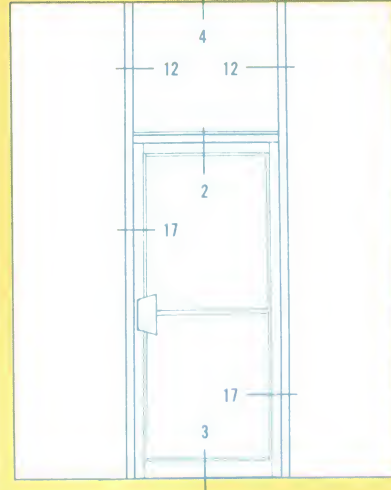
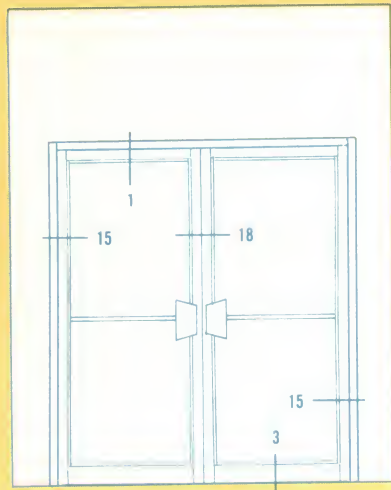
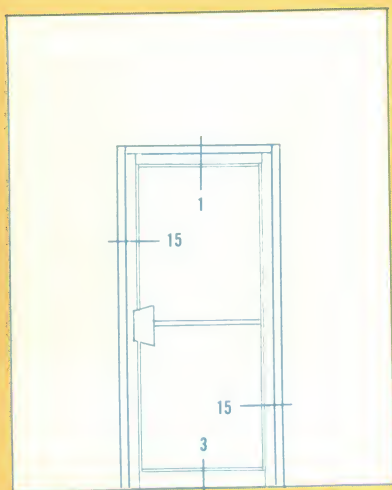


door controls include floor, overhead and concealed overhead controls—the best we can offer. Automatic entrances are supplied by leading specialists.

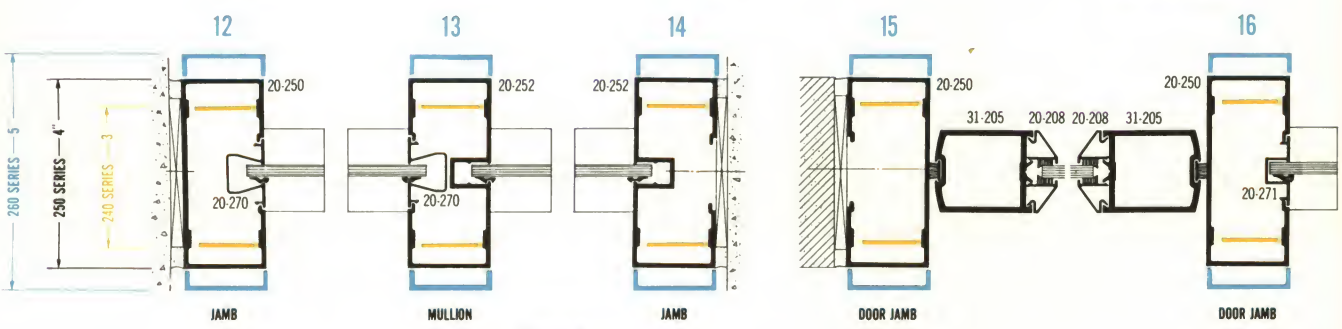
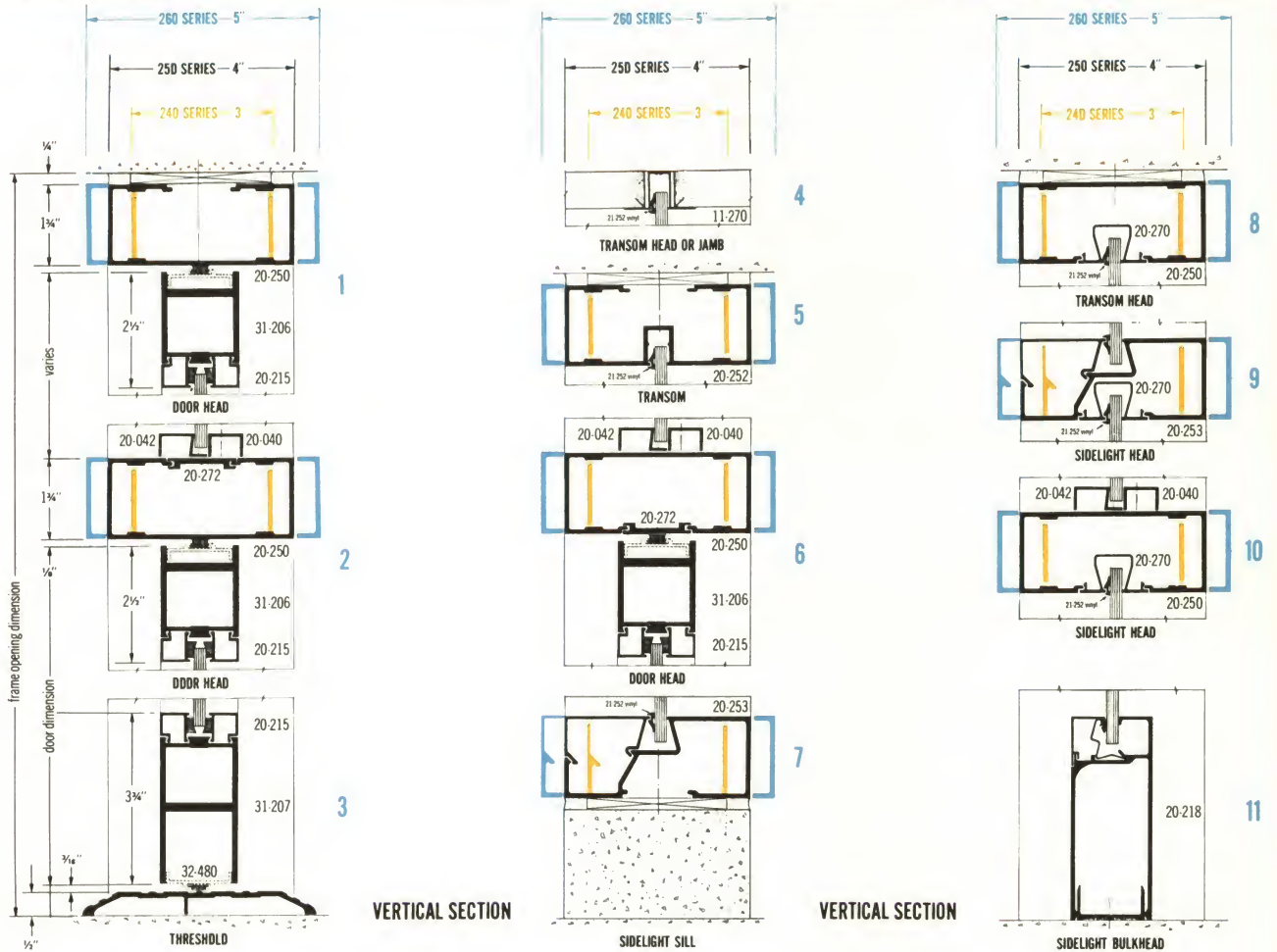
Imperial hardware, Stellar split plates, Jackson 3-Point lock and a wide selection of other hardware



Acme narrow-line entrance combinations allow almost unlimited flexibility of design. From standard entrances to the most advanced designs, architectural thinking takes exact form in Acme aluminum. The superb Acme buffed finish adds unmistakable quality to the clean lines of the entrance. Design and planning assistance for special entrance problems are as near as your phone.

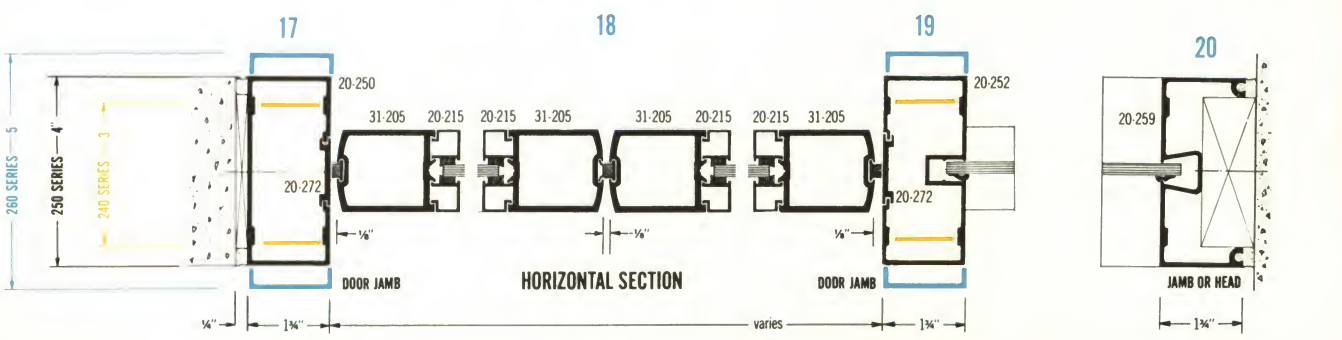


Logic combines with engineering skill to produce the structural simplicity of Acme flush-glazed entrance sections. Note the extra strength engineered into framing members and the design variations possible with the different series. Ease of installation and important on-the-job economies are standard with Acme architectural aluminum.



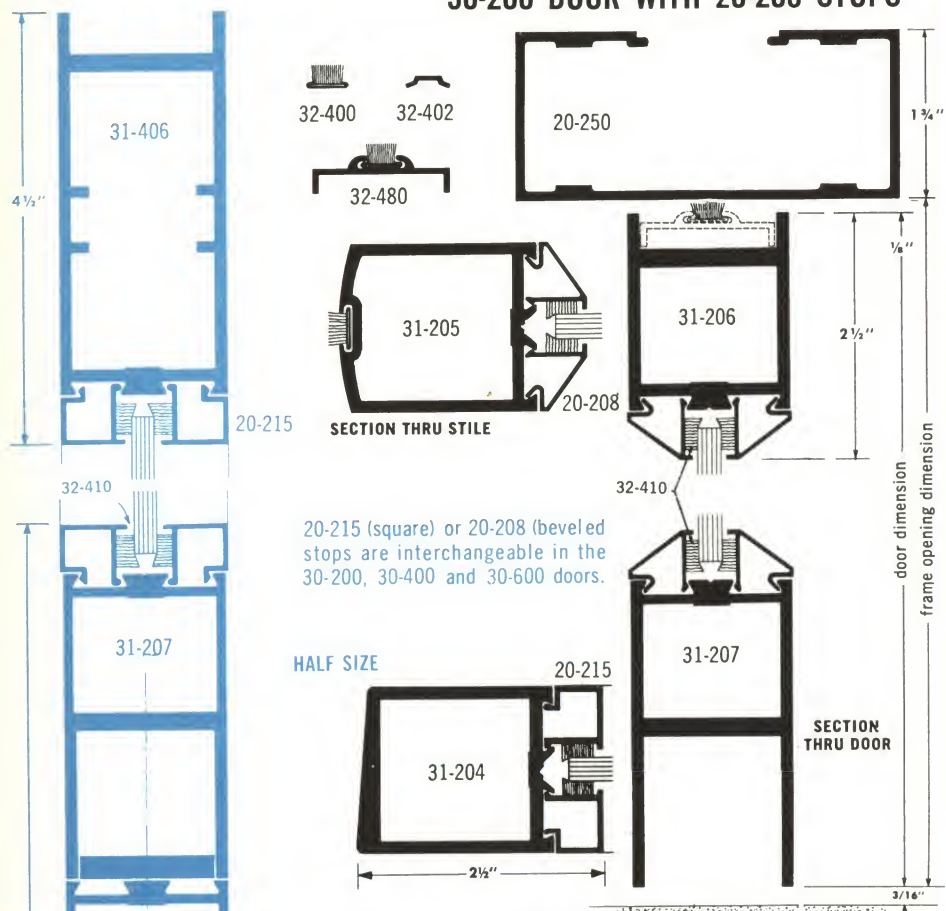
QUARTER SIZE

HORIZONTAL SECTION

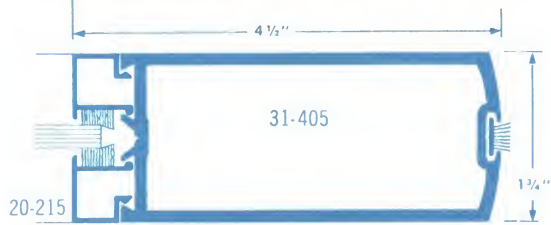


Beauty and strength are outstanding in Acme doors. Precision die-cast, mechanically joined door corners of the famous Acme design provide up to twice the strength of welded doors, plus on-the-job width adjustment. The carefully buffed Acme matte finish gives life to the aluminum in lustrous and evident quality. Narrow-stile or wide stile designs are available.

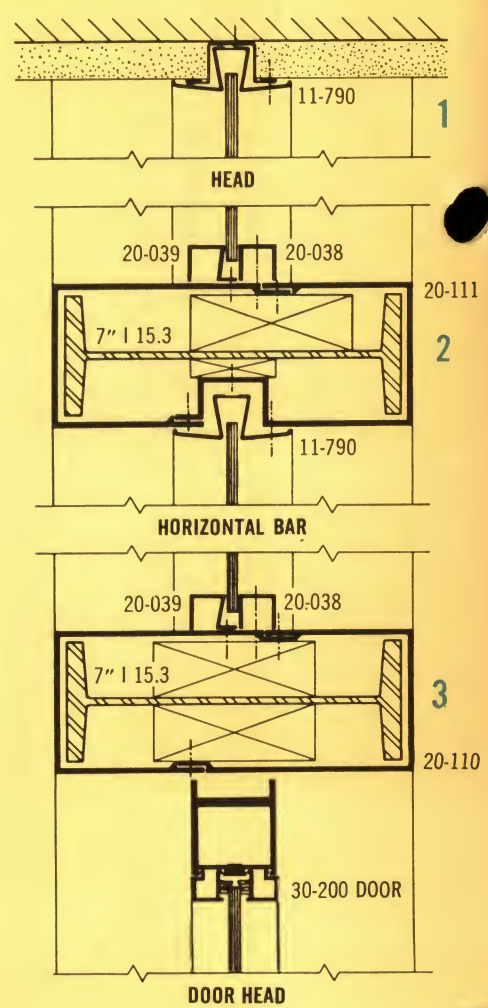
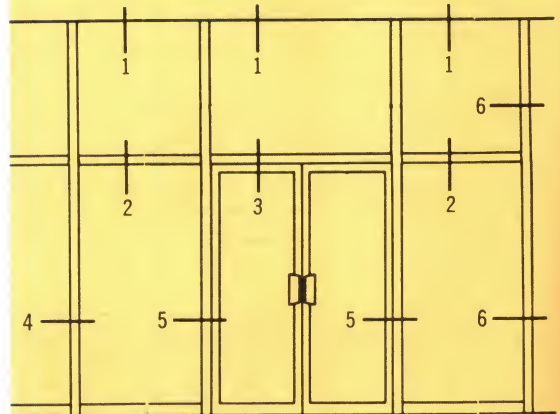
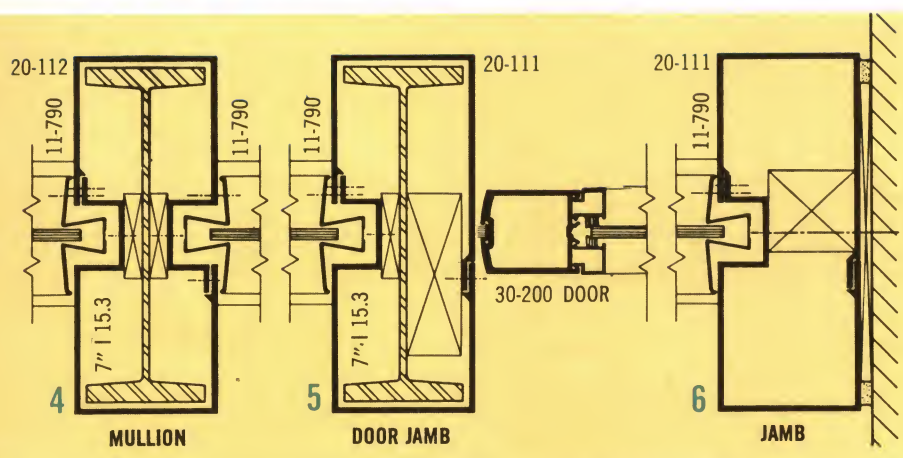
30-200 DOOR WITH 20-208 STOPS



30-400 DOOR WITH 20-215 STOPS



30-600 DOOR WITH 20-215 STOPS



Note: Flanges of 7" x 15.3 need only be cut to 2 1/2"

QUARTER SIZE

Framing tubes shown are 3" x 7 1/2"

A wide selection of push-pull hardware is an important advantage with Acme doors. Our distinguished "Imperial" line offers a choice of six styles, all of them beautifully designed and made with old-world craftsmanship. The "Stellar" split-plate push bars combine economy with striking designs and interchangeability. Other standard handles add to this complete selection of hardware.



"IMPERIAL" PUSH-PULL HARDWARE



32-200 Black plastic
32-205 Ivory plastic

32-230 Black plastic
32-235 Red plastic

32-210 Handle in black plastic
32-215 Handle in red plastic

32-220 Handle in black plastic
32-225 Handle in red plastic

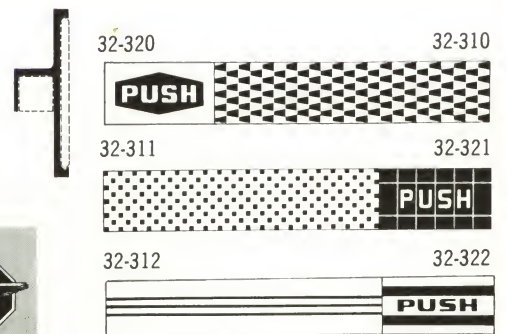
32-240 Black plastic
32-245 Red plastic
32-250 Black plastic
32-255 Ivory plastic

"STELLAR" SPLIT PLATE HARDWARE



32-305 Complete assembly

Examples of custom plexiglas inserts that can be personalized to your design requirements.



32-320 32-310

32-311 32-321

32-312 32-322

Special designs to your order

STANDARD PUSH-PULL HARDWARE



32-012
Push-Pull Plate

32-015
Push Bar

32-020
Push Bar

32-030
Push-Pull Handle

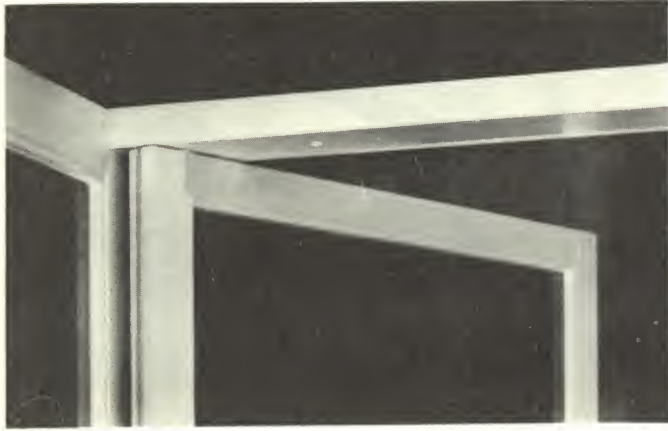
32-040
Door Pull Handle

32-050
Push-Pull Plate

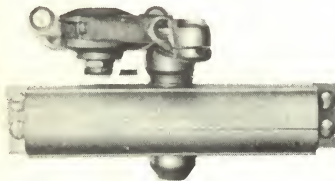
With its entrances Acme presents mechanical features of proven excellence. In door controls, both floor and overhead, in automatic entrances, locks, panic exit devices, pivots, and other operating devices Acme tests, compares and selects, to offer the finest in every field.



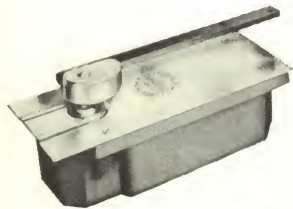
13c
AC



33-200 JACKSON 20-330 CONCEALED OVERHEAD CLOSER



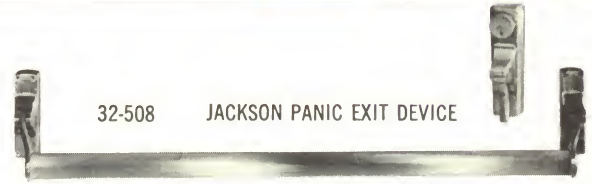
33-094 YALE DOOR CONTROL



33-300 DOROMATIC DOOR CONTROL



32-002 PIVOT



32-508 JACKSON PANIC EXIT DEVICE



32-063 JACKSON 3-POINT NARROW STILE LOCK



19-130



19-109



19-110

THRESHOLDS



31-505



HALF SIZE

31-500



31-501



31-502



31-503



31-506 Extruded end plate

SPECIFICATIONS

Doors, framing sections and store front metal shall be as manufactured by the Acme Metal Molding Company. All extruded aluminum shall be of 6063T5 alloy. All sheet aluminum shall be of #32 alloy. Alumilite finish shall be matte type, in accordance with Aluminum Company of America specifications 204A1-R1, and blend with the hardware and sheet aluminum (when called for). Door stiles and rails shall be joined and reinforced by means of diecast structural corner assemblies. Special care shall be taken to insure that all mechanical joints between vertical and horizontal framing members of entrances are flush and present

a hairline appearance within commercial tolerance limitations. All store-front work shall be performed by experienced technicians in accordance with the manufacturer's recommendations and conform to the highest standards of the industry. Unless otherwise specified, all finish hardware shall be provided by the door manufacturer. The General Contractor shall protect all exposed portions of the metal work included in this section during construction and fully clean this metal before the building is occupied. Cleaning methods shall be as recommended by the manufacturer. No abrasive cleaning agents will be permitted.

ACME METAL MOLDING COMPANY 5022 Triggs Street, Los Angeles 22, California

Bay Area & Northwest: 645 National Avenue, Mountain View, California • YOrkshire 7-5735

Southwest: 179 Parkhouse Street, Dallas 7, Texas • RiVerside 8-6747

Canada: 1421 East Pender Street, Vancouver 6, British Columbia • HaStings 9439

International Division: Alukon International, Ltd., Melchor Ocampo 463, Mexico 5, D.F., Mexico • Tel. 11-46-40

With its entrances Acme presents mechanical features of proven excellence. In door controls, both floor and overhead, in automatic entrances, locks, panic exit devices, pivots, and other operating devices Acme tests, compares and selects, to offer the finest in every field.



13c
AC



Digitized by



ASSOCIATION
FOR
PRESERVATION
TECHNOLOGY,
INTERNATIONAL
www.apti.org

BUILDING
TECHNOLOGY
HERITAGE
LIBRARY

<https://archive.org/details/buildingtechnologyheritagelibrary>

From the collection of:

Mike Jackson, FAIA

sheet aluminum (when called for). Door stiles and rails shall be joined and reinforced by means of diecast structural corner assemblies. Special care shall be taken to insure that all mechanical joints between vertical and horizontal framing members of entrances are flush and present

commercial tolerance limitations. All store-
by experienced technicians in accordance
ommendations and conform to the highest
unless otherwise specified, all finish hard-
e door manufacturer. The General Contrac-
tor shall protect all exposed portions of the metal work included in this
section during construction and fully clean this metal before the build-
ing is occupied. Cleaning methods shall be as recommended by the
manufacturer. No abrasive cleaning agents will be permitted.



CKSON PANIC EXIT DEVICE

NARROW STILE LOCK



19-130

19-109

19-110

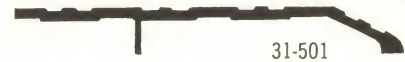
SHOLDS



31-505



31-500



31-501



31-502



31-503



31-506 Extruded end plate

ACME METAL MOLDING COMPANY 5022 Triggs Street, Los Angeles 22, California

Bay Area & Northwest: 645 National Avenue, Mountain View, California • YORKSHIRE 7-5735

Southwest: 179 Parkhouse Street, Dallas 7, Texas • RIVERSIDE 8-6747

Canada: 1421 East Pender Street, Vancouver 6, British Columbia • HASTINGS 9439

International Division: Alukon International, Ltd., Melchor Ocampo 463, Mexico 5, D.F., Mexico • TEL. 11-46-40