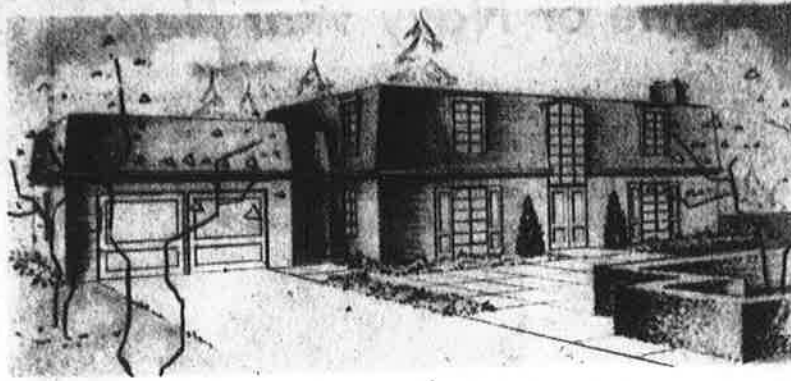


# French Provincial in Newport Shores



**OPEN HOUSE:** Planned for a family with older children, this sophisticated French provincial home was designed by William

Lumpkin, La Jolla, Calif., architect. The builder is Alan F. Scott, Inc. Trend House was the color consultant.

## 2,600 Sq. Feet In 2-Level House

In Newport Shores, (where there are Venice-like canals as well as waterfront sites for boat owners.) is today's Seattle Times open house but it is constructed on a conventional lot.

It was John L. Scott, who, looking at the large Bellevue community that faces the east side of Mercer Island south of the East Channel Bridge, said, "Let us build something completely different in here, different from the several other large, expensive houses already here."

The result is a French provincial with mansard roof and other French details. Scott is the owner. Alan F. Scott (no relation) is the builder, the design coming from William Lumpkin, La Jolla, Calif., architect.

From its putty-colored brick exterior, with the shingles of the mansard roof stained a deeper putty, to the alcove windows on the upper floor and the high arched window over the front double doors, this house is indeed "different."

**CONCRETE - AGGREGATE** squares and planting places, with a box hedge to come, add to the front approach. In the side, where the stairway straight ahead leads to the

upper floor, there is a wider-than-average hallway to the rear of the house.

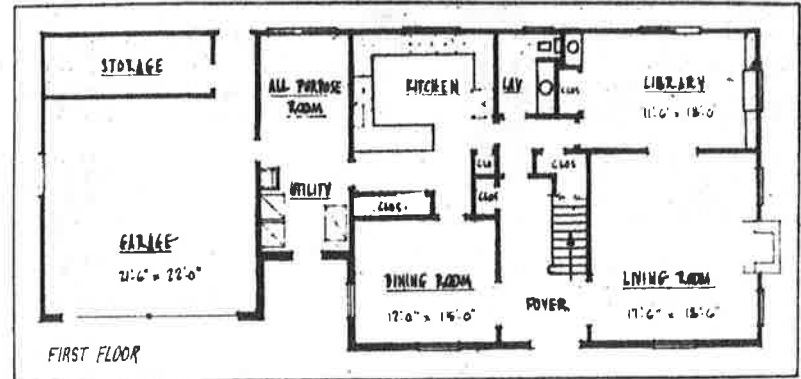
Special doors sent from England, lead from the living and dining rooms to the front patio. The floors are hardwood, stained with a nut color. In the living room, the walls are mud-green, a color carried throughout the house with variations in shading.

Used brick for fireplace and hearth contrasts with the white mantel. In the library, visitors will find the first of many Scott-constructed built-ins. Here, there are book cases, painted white to contrast with the green walls. There are the first of the many ceiling spotlights used for drama in several rooms.

**BEHIND DOUBLE** doors in one end of the library is a small bar, complete with sink. The library also has a window seat between book cases, a type found upstairs in each of the bedrooms. There is storage underneath. This room could be used as a guest room if necessary because there is a powder room adjacent and space for clothing in a closet under the stairwell.

In the powder room, a wallpaper scene with trees and parks, goes well with the light fixture, a long cylinder encased in white basketry. The mirror is framed in a similar basket-type frame.

Birch, stained walnut, is used on the kitchen cupboards, of which there are many in various sizes. They look like flush doors and have



**MAIN FLOOR:** The circular traffic pattern, turning from the foyer either way, plus the extra front entry into the utility

room, makes every room easy of access. Further, there is accessibility to the front formal patio through French doors.

### DRIVING DIRECTIONS

To reach Newport Shores, where today's Seattle Times open house is situated, drive in the Sunset Highway across Mercer Island and on east to the Renton cut-off. There, turn south and proceed almost one mile to the second road leading off to the right. Follow Seattle Times signs to the community. Hours will be noon to dark.

no hardware but pull open instead from underneath.

**YELLOW PLASTIC** laminate covers the counters as well as partial backsplash and is used for the top of the large table that separates the work area from the pantry closet built in. Appliances include a drop-in range with double oven, one below, one above, and a pull-

out ventilator hood. A good addition to the kitchen is an extra closet for family coats since it is expected that the family often will enter from the garage or the second front entry into the utility room.

The wife of a future buyer surely will appreciate the utility room with its extra space for sewing, ironing or for children's play. She will have built-in birch cupboards here, too.

Inspection of the double garage will reveal a heated storage space in the rear.

**THE DINING-ROOM** spotlight is directly over the table space. A chandelier could be installed easily if desired, however.

Railing the stairs and their boundaries on the upper floor is white wrought iron. At the stair's head is the family bath with an automatic door clos-

ure. White vinyl, terrazzo pattern is used for floor coverings of all the baths. White tile covers the tub recess.

In the master suite, the built-in drawers and cupboards in the dressing room are especially commendable. There is 21 feet of hanging space in the closet. Alcove windows add to the bedrooms' design. A corner shower and a long vanity table covered with white plastic laminate are in the master bath.

The home is heated by hot air, gas-fired. Its site is 90 by 160 feet. The house has 2,600 square feet of floor space.

Hours today will be noon to dark.

Carpet, Footprints on Ceiling

Jacobson

**JUST ARRIVED  
NEW SHIP  
BOILER**

Hec

AERIA

The H Inc., and sions will building 000 waste month, H ident and

A 30-b shop ad plant of ing, Inc. worth of for mis parts.

its first An ad Plating pleted la \$240,000 which m company ing from iature el

HEATH include : research precision the desig special

Heath in ders tota The l Co., a sion at has eng