

PRESERVING RECENT PAST

Mercer Island



By Michael Houser,
State Architectural Historian



Mercer Island, Wash.



Sept 2015



Tri-Level Home on Mercer Island 2,700 Sq. Feet In Spacious House

A detailed architectural article from the Seattle Times, dated Sept 30, 1962. The article describes a 'Tri-Level Home on Mercer Island' designed by Black & Calvert, Inc. It features a floor plan diagram with rooms labeled: DINING, KITCHEN, BREAKFAST, LIVING, BATH, HALL, and FAMILY. The text discusses the architectural style, materials, and construction details. It mentions that the house is a 'split-level' design with a main level, a lower level, and a basement level. The article also notes that the house is situated on a hillside and has a view of the water.

OPEN HOUSE: This island home is an architectural gem for the coast and of Mercer Island was designed by Black & Calvert, architect, and constructed by the Pacific Northwest.

BLACK & CALVERT, INC. Its style, mood and relationship to the site, as well as the unique features, are spelled out in the following article, written and photographed by Paul Hartman.

THE HOUSE: Located on Mercer Island, it is a split-level home of 2,700 sq. ft. It is a modern house with a view of the water. The house is designed by Black & Calvert, Inc. and is a prime example of modern architecture.

ARCHITECTURAL DETAILS: The house features a cantilevered roof, large windows, and a modern interior design. The materials used include wood, stone, and concrete.

CONSTRUCTION: The house was built by the Pacific Northwest. The construction was a complex task due to the hillside location.

LOCATION: The house is located on Mercer Island, Washington. It offers a beautiful view of the water and surrounding landscape.

SEATTLE TIMES: SEPT 30, 1962

THE

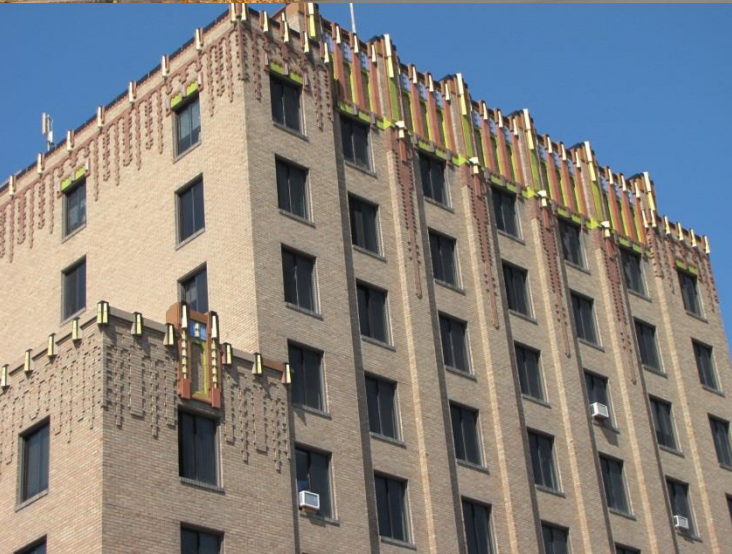
5

0

RULE

Historic Properties

1966 - 1916



Historic Properties

2015 - 1965



Historic Designations

Levels of Listings



National Historic Landmark



National Register of Historic Places

Level of Significance: Local, State & National



Washington Heritage Register



Local Register



Washington
Heritage Barn
Register

Designated Historic Sites –

- **1,434** listings on the National Register of Historic Places statewide.
- **522** listings just on the Washington Heritage Register of Historic Places statewide.
- **24** National Historic Landmark listings.
- **624** Heritage Barn Register listings
- **264** in King County
- **2** on Mercer Island



Designated Historic Sites – Mercer Island

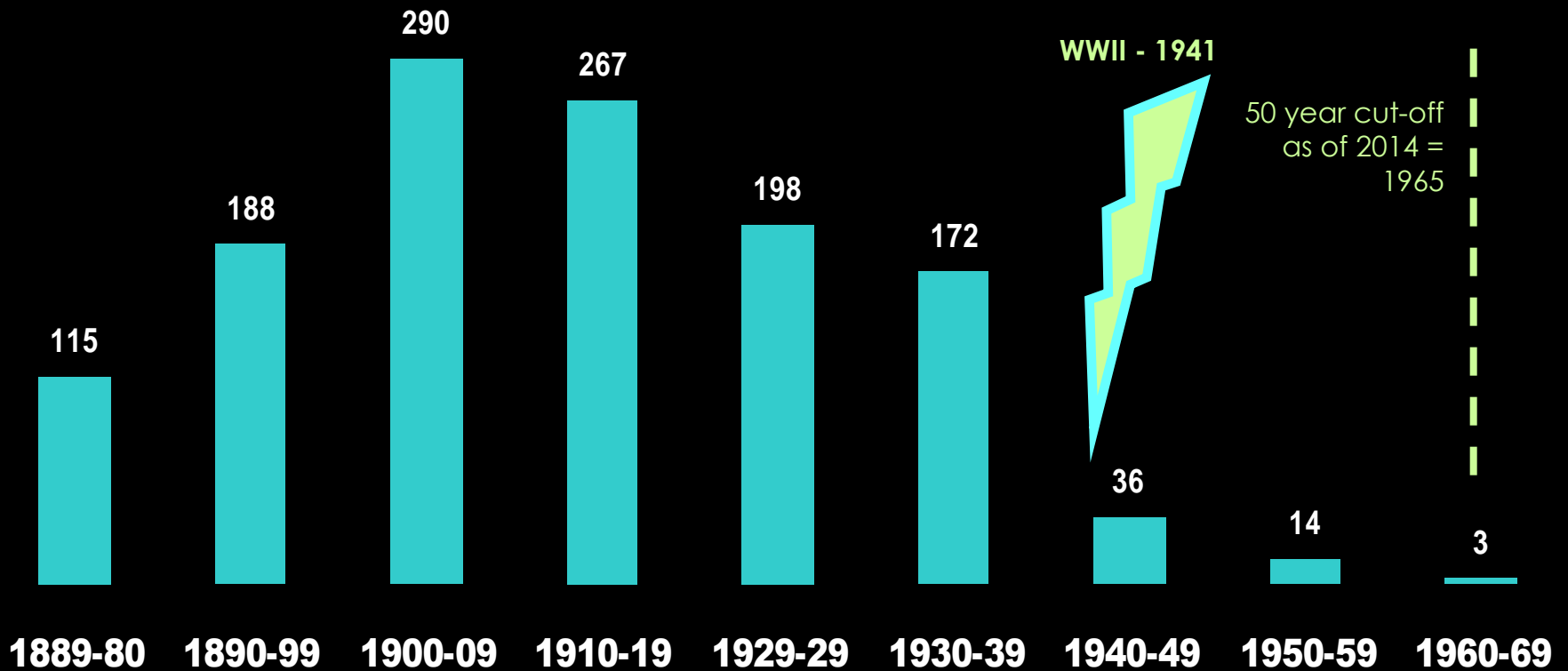
- Lakeview/Sunnybeam School (1918)
– listed 1988
- Keewaydin Clubhouse (1922)
- listed 2005



State & National Register Nominations

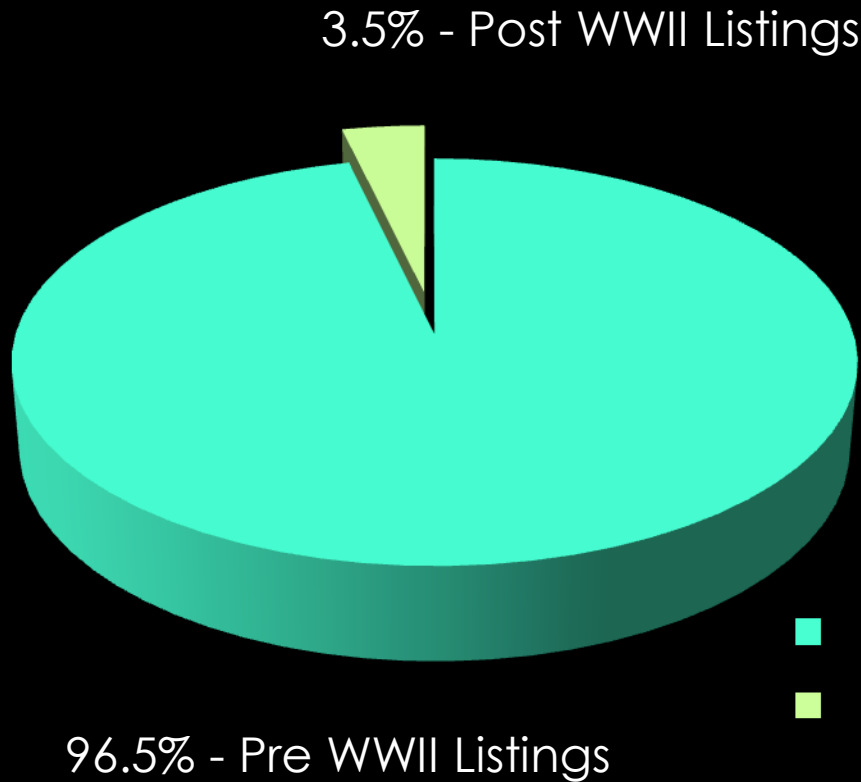
By Built Date

Trend: Drastically decreasing number of post WWII listing. Shows the need to focus on listing post WWII resources before they are lost.



State/National Register Listings

Post WWII Resources



- 1850 - Post WWII Listings
- 65 - Post WWII Listings

Mid-Century Designs
 Mercer
 ISLAND

Did You Miss this TIMES FEATURE HOME?? Come out TODAY to

MERCER ISLAND

Country Living . . . Minutes from Town

★ ★ ★ 5-STAR HOMES ★ ★ ★



3 Bedrooms *With and without full daylight basements.*

- ★ INDOOR-OUTDOOR LIVING
- ★ ALL MODERN CONVENIENCES
- ★ BEAUTIFUL HOMESITES
- ★ QUALITY CONSTRUCTION

★ IDEAL LOCATION

DIRECTIONS . . .
 Follow the arrows from Sunset Hwy & W. Mercer Way.



2758 71st S. E.
 (only 4 blocks from the Floating Bridge)

HOME BUILDERS, Inc.
 BILL BROKAW, Pres.
 ADAMS 2731

Seattle Times: March 25, 1956

Historic



Ralph Anderson



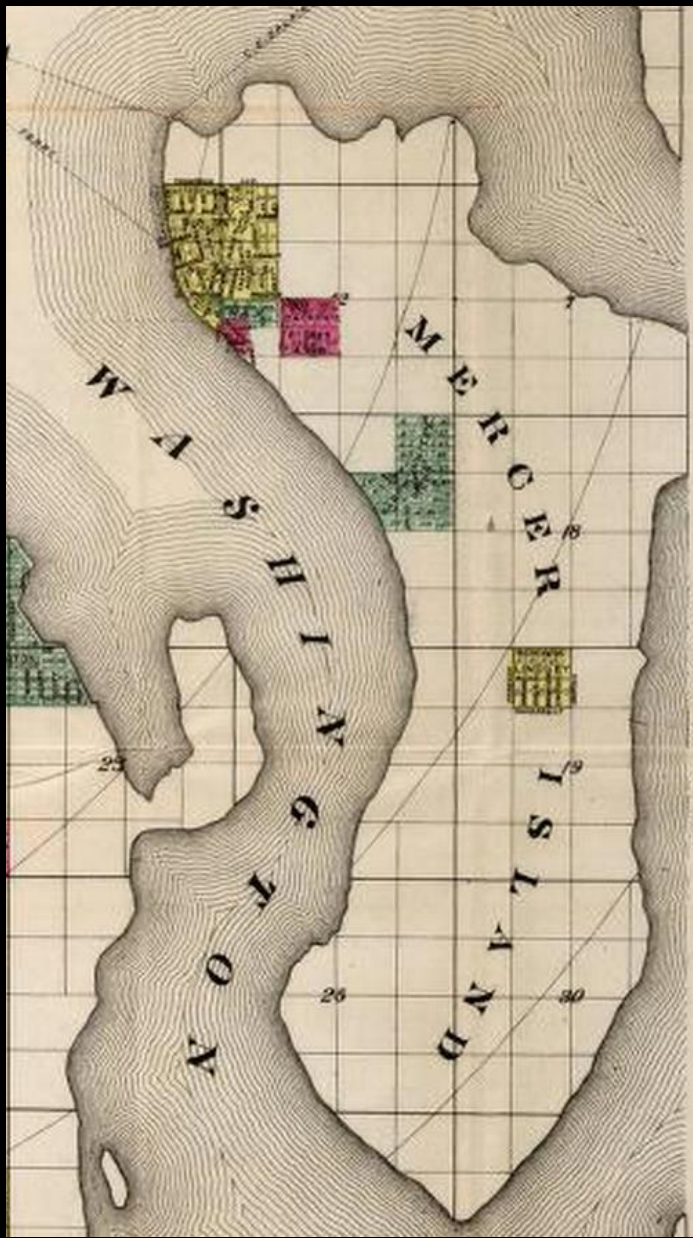
Gene Zema



Jerry Gopp

Current





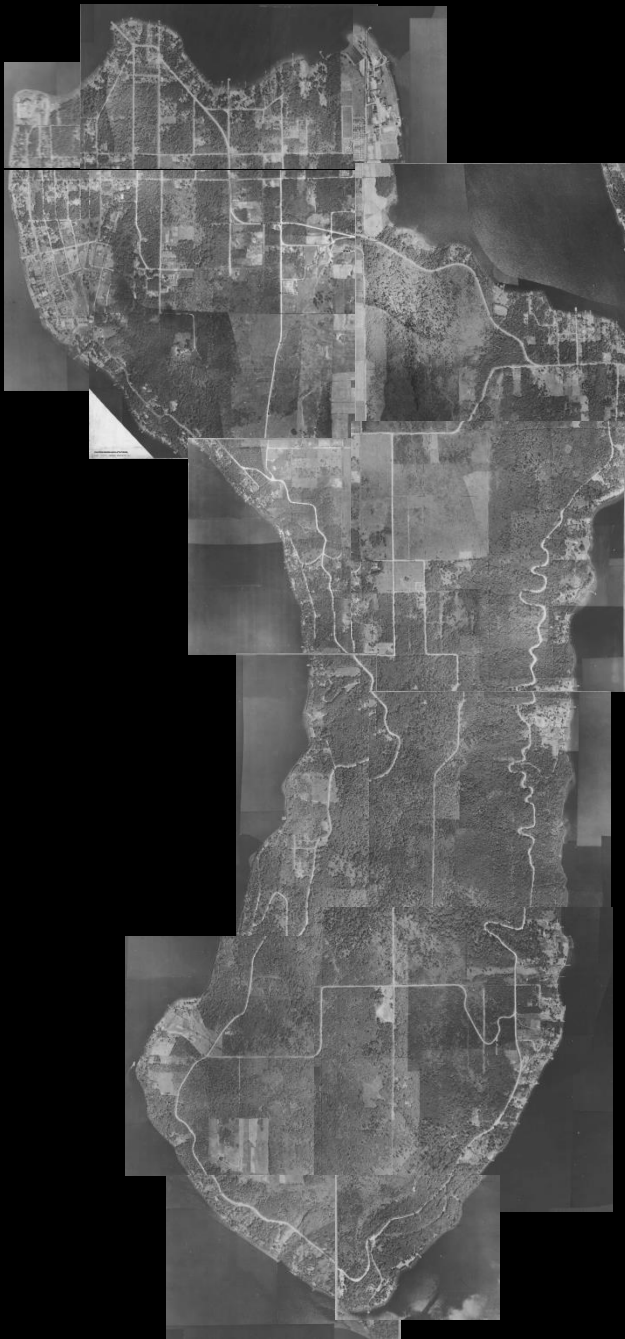
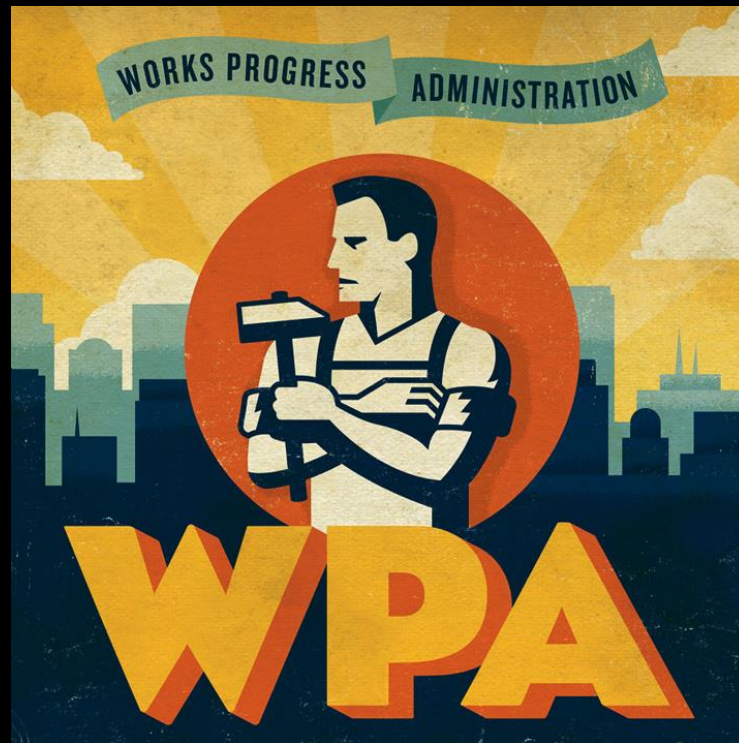
Whitney's Map - 1890



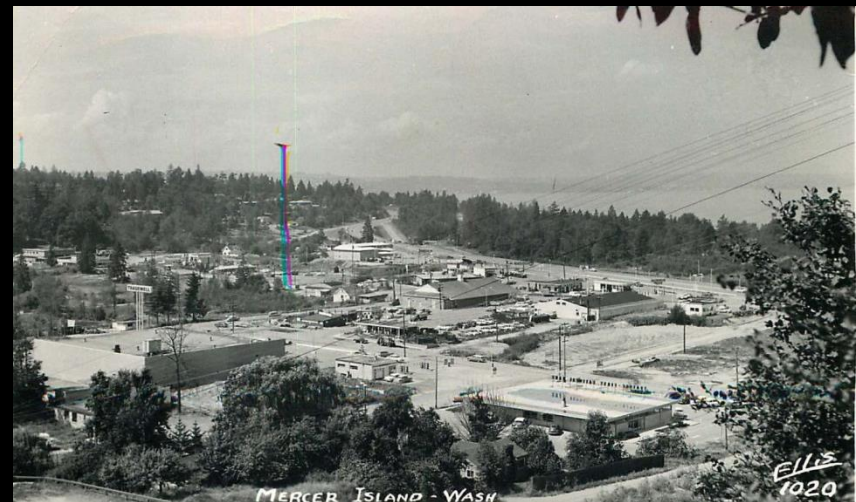
WPA Survey

Aerial photos

1937







6905 SE 32rd St.

TERMINOLOGY

Brutalism

New Formalism

Post Modern

Solid End Wall

A-Frame

International Style

Neo-Expressionism

MODERN

Shed

MOVEMENT

Mansard

Northwest Regional

Split Level

Populuxe

Wrightian

Curtain Wall

Contemporary

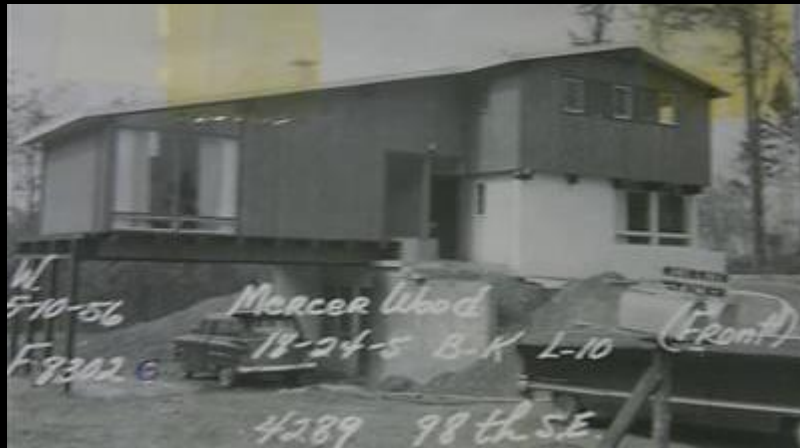
Geodesic Dome

Miesian

Deconstruction

Solid End Wall

Relationship of home to surrounding natural environment



- Indoor – outdoor spaces



7001 se 32nd St



9109 se 50th



4518 w Mercer Way

- Expansive windows



9120 se 50th



3649 W Mercer Way



3609 ne 70th Place

• Open floor plans



Wertheimer Residence



3649 w Mercer Way

Economy, Ample Space, Design Featured in Mercer Island Home

OPEN HOUSE: Bennett & Moore, architects, introduce a new plan in economy home planning in the contemporary manner in today's open house situated on Mercer Island, 1954 72nd St. The Cabaret, constructed in 1954, is a total home of 188 square feet for approximately \$84 a square foot. Open-house hours will be from noon to 4 p. m. Follow carefully driving directions on this page.

By HARGREVE & PHILLIPS: To design and construct a house for approximately \$84 a square foot is a major challenge. It is not only a matter of economy and efficient structure, but also a matter of providing a home that is as comfortable and convenient as possible. The architects have designed a home that is both economical and comfortable. The house is a total of 188 square feet, including the garage and carport. The house is a total of 188 square feet, including the garage and carport.

MOVING DIRECTIONS: From the University of Washington, take the 5th Avenue Bridge, turn right at the Wood Street Bridge, turn left on South East and proceed to 72nd St. N. E. Turn left on 72nd St. N. E. Turn left on 72nd St. N. E. Turn left on 72nd St. N. E.

ON YOUR

Lincoln High P.T.A. Founders To Celebrate Day Luncheon



9109 se 50th

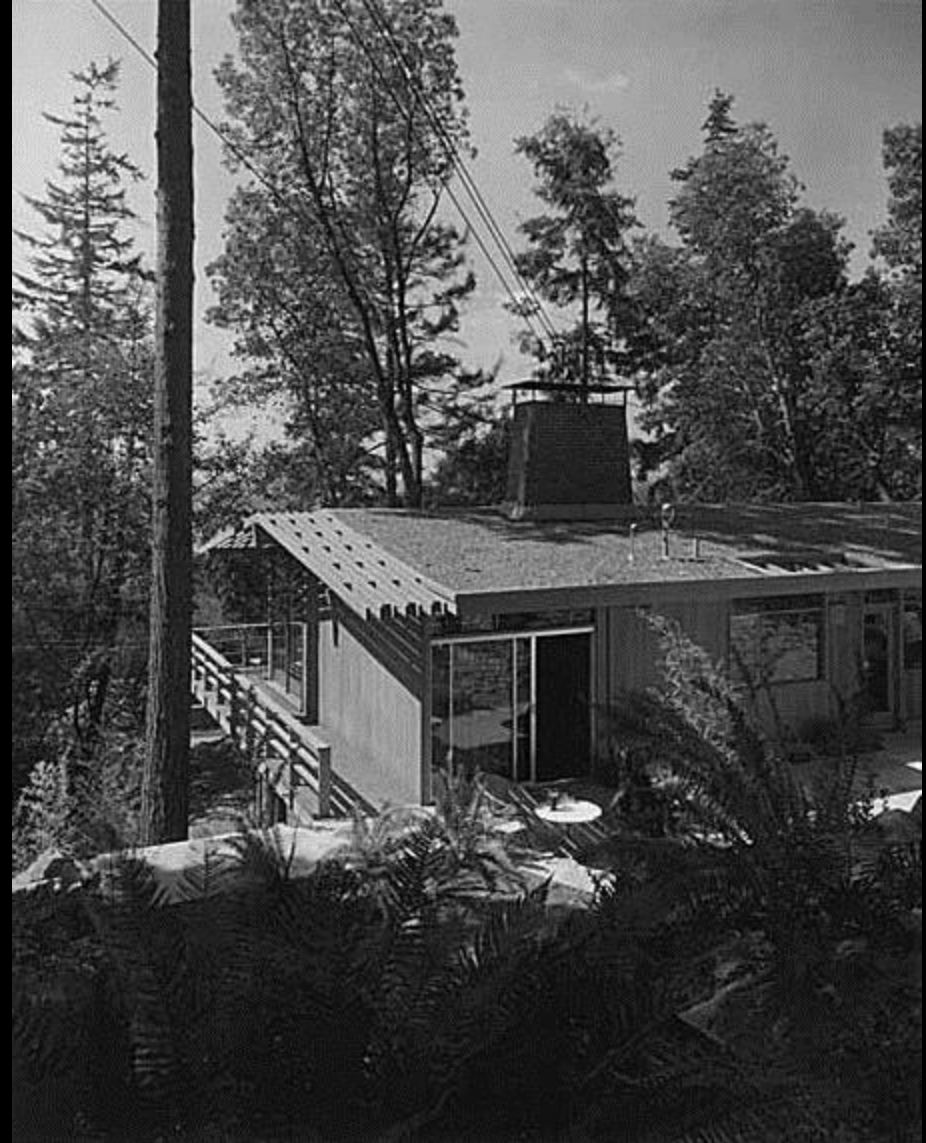
- Low profile roof lines



2021 81st Ave SE



4135 Boulevard Place

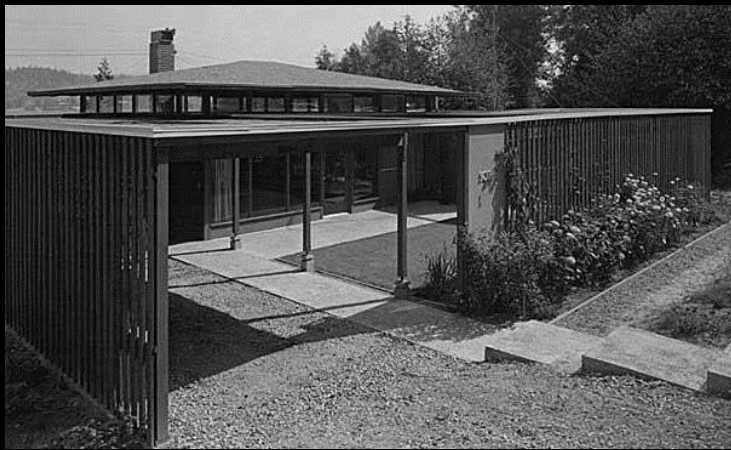


Roy Miller House

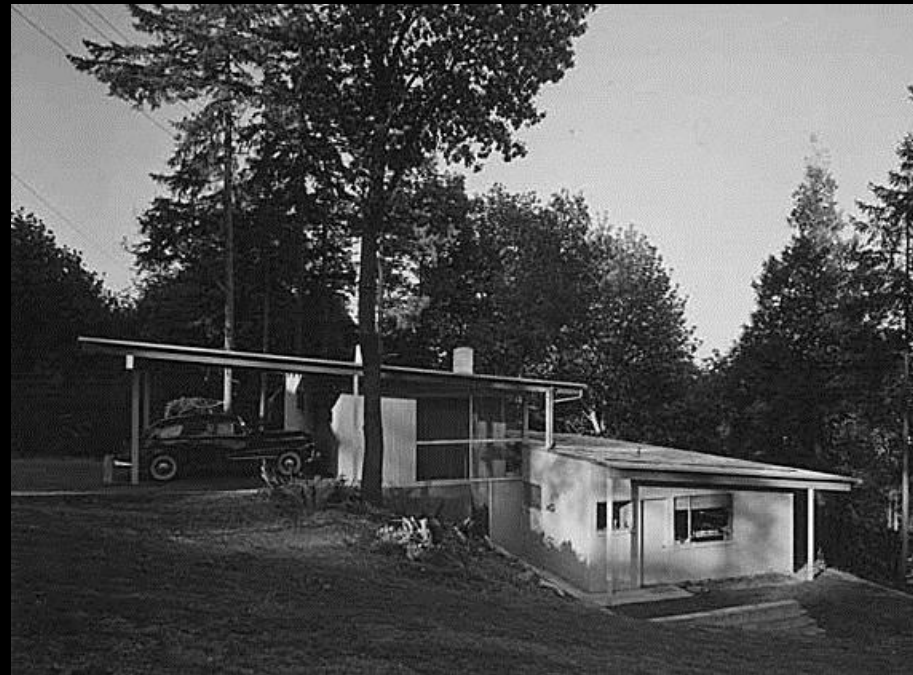
- Open carport



8815 se 14th St



Lange Residence



Wolf Residence

- Use of natural materials



7830 se 63rd Place



Kirk Residence



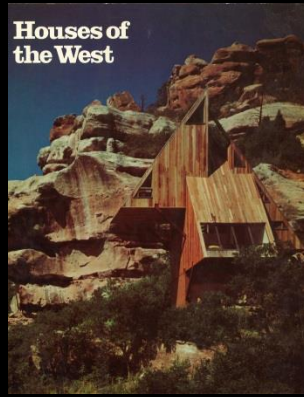
Wertheimer Residence

the Architects

Mercer Island



Wendell Lovett



7446 92nd Ave. House - 1968



Scofield House - 1976

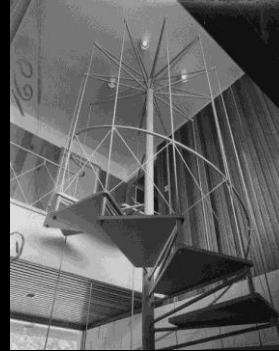


Monson House - 1977

Gordon Giovanelli House

4456 Ferncroft Rd. – 1959

Architect: Wendell Lovett



WINNING HOUSE of wood beam and joist construction has lakeside setting. Designed for family of five, it features active ground level and quiet upper level.

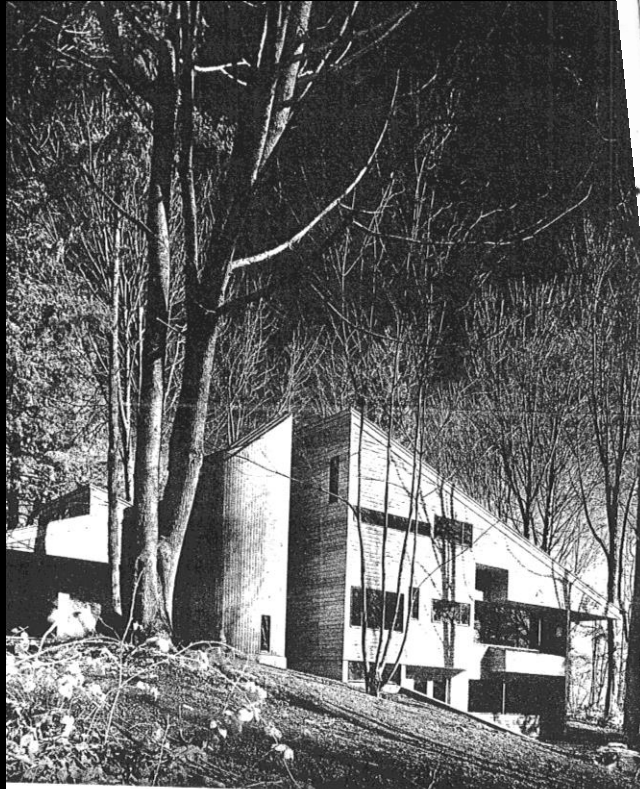


5/22/2002

AIA Seattle Times 1959 Home-of-the-Year

Lauren Studebaker House

7545 E Mercer Way – 1970
 Architect: Wendell Lovett



Photos by Christian Staub

The Home of the Year, 1970, is built within a serene, natural setting on Mercer Island. It was designed by Wendell Lovett, architect, for the Lauren Studebaker family.

A sculptured design on Mercer Island

Text by Margery Phillips

"IT HAS A VERY sculptural quality, inside and out." That comment by the jury that sums up the Lauren Studebaker home on Mercer Island, chosen Home of the Year for 1970.

The jury included Glenn Brewer, Sam Alden and Robert Champlin, all architects. Wendell Lovett was the architect of the winning design.

The Studebakers and their three young sons found a beautifully wooded site on the south end of Mercer Island. In the fall and winter months, when the trees are bare, they have full view of the East Channel and the Cascades. When the trees leaf out, their woodland site is refreshing and inviting for warm-weather activities of the family of five.

The jury commented on the consistency of detail and the interesting use of windows while the architect accents throughout.

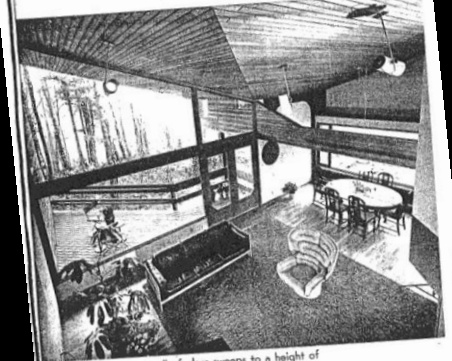
A cylindrical, sky-lighted tower connects the house of three levels. An adult retreat—the master suite, study and guest room—are on the upper level. The lower level is reserved for Scott, 7, Eric, 5, and Janie, 4. Each has his own bedroom with built-in and they share a large playroom that opens onto a terrace. A combination bath-and-laundry room and a storage-and-furnace room complete the lower level.

On the main living level, major traffic patterns have floors finished in glazed red tile. From the entry, a wide corridor leads to the living and dining area where a high sloping ceiling offers spatial contrast to the "cave" designed for more intimate hours for reading and music.

The kitchen and informal dining space are keyed to the active young family and done in bright red-orange and blue accenting the red cedar cabinetry.

The end wall of the living room is of glass sweeping to a height of 16 feet. The dining room window wall is 14 feet wide, flooding the interior with natural light.

The Home of the Year program, now in its 18th year, is sponsored by The Times and the Seattle Chapter, American Institute of Architects.



In the living area, a wall of glass sweeps to a height of 16 feet to meet the sloping cedar ceiling.

AIA Seattle Times 1970 Home-of-the-Year
 Burlington Industries – International Home Furnishings
 1971 Home-of-the-Year
 Architectural Record – National Award of Excellence

Paul H. Kirk



4848 W Mercer Way, House - 1960



Evans House - 1956

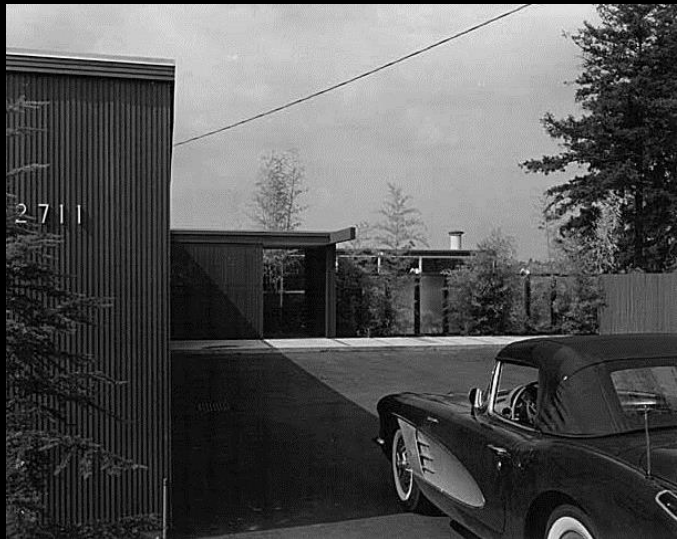
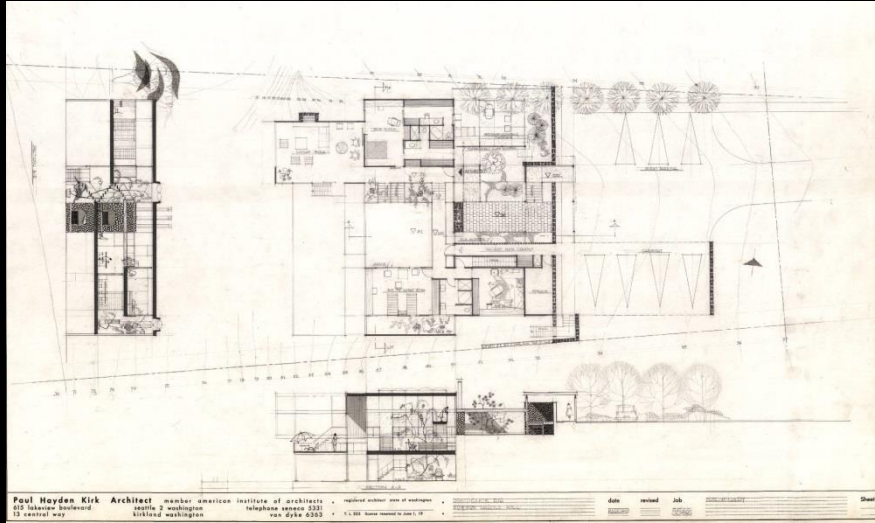


3649 E Mercer Way, House - 1954

Harold Poll House

2711 60th Ave SE – 1958

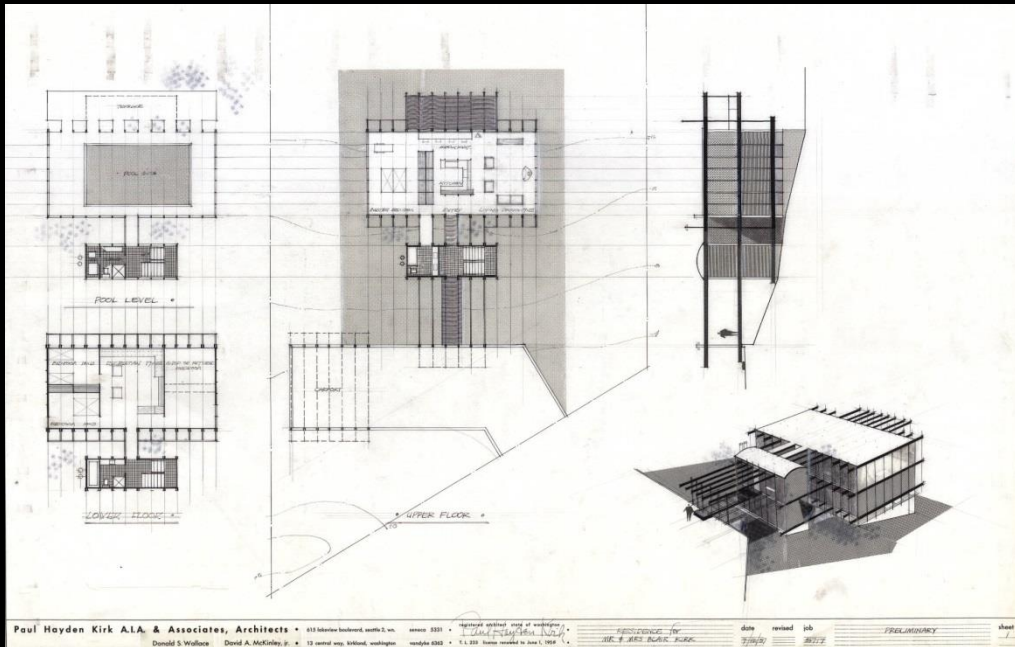
Architect: Paul H. Kirk



Blair Kirk House

4157 W Mercer Way – 1960

Architect: Paul H. Kirk



House

4458 Ferncroft Rd – 1960

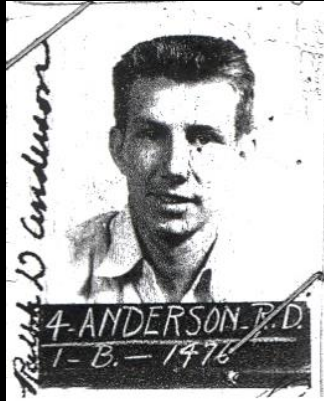
Architect: Paul H. Kirk



Replacement house



Ralph Anderson



3005 69th Ave SE, House - 1963



6007 79th Ave SE, House - 1968



5425 96th Ave SE, House - 1965

Puget Power "Light for Living" Model House

4249 91st Ave SE – 1960

Architect: Ralph Anderson



PUGET POWER
OPEN HOUSE
"Light-for-Living"
Gold Medallion Home
4249 91st S.E.,
on Mercer Island

Puget Power invites you to inspect the ultimate in modern electric living. The Puget "Light-for-Living" House, grand prize winner in the national Edison Electric Institute "Light-for-Living" contest. While this home is not for sale, the prize winner, Mrs. R. D. Milroy, has graciously permitted "open house" before she moves in. See this exciting new home any time from 1:00 p.m. to 8:00 p.m. through October 30th. Here are just a few of the features you'll find in this extraordinary house:

- Light-for-living**
The "Light-for-Living" House is the first home in the world to be built with "light-for-living" features. It is a home that is built to be lived in, not just to be seen.
- Built-in 1961 appliances**
See a complete set of new 1961 electric appliances including a refrigerator, electric range, dishwasher, and electric clothes dryer. All built-in and ready to use.
- Built-in food center**
The "Light-for-Living" House is the first home in the world to be built with a built-in food center. It is a home that is built to be lived in, not just to be seen.
- Electric heat and electric air conditioning**
The "Light-for-Living" House is the first home in the world to be built with electric heat and electric air conditioning. It is a home that is built to be lived in, not just to be seen.
- Designed-for-the-future, low-voltage wiring**
The "Light-for-Living" House is the first home in the world to be built with designed-for-the-future, low-voltage wiring. It is a home that is built to be lived in, not just to be seen.
- Built-in Hi-Fi and intercom speakers**
The "Light-for-Living" House is the first home in the world to be built with built-in Hi-Fi and intercom speakers. It is a home that is built to be lived in, not just to be seen.

PUGET SOUND POWER & LIGHT COMPANY

Dr. Phil & Eleanor Peters House

9120 50st St – 1960
Architect: Ralph Anderson



Donald Hochberg House

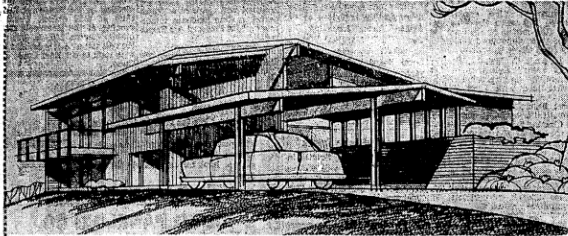
4148 Boulevard – 1954

Architect: Benjamin McAdoo Jr.



48 The Seattle Times Sunday, April 4, 1954

Home of The Month -- Charm in Lakeside Living on Mercer Island



OPEN HOUSE: A beautiful Mercer Island home for the Donald H. Hochberg, designed by Benjamin F. McAdoo, Jr., architect, A. I. A., and constructed by Saylor Black has been chosen for Washington State Chapter of the American Institute of Architects' Home of the Month. Outstanding

House Design Blends Into View Site

By MARGERY R. PHILLIPS

Today's Home of the Month of Mercer Island, has been designed for Mr. and Mrs. Donald H. Hochberg by Benjamin F. McAdoo, Jr., architect, A. I. A. The house, on a steeply sloping property overlooking Lake Washington, has a great deal of charm and warmth. The use of brick and beautifully grained woods make each room distinctive. Indoor-outdoor living has been planned carefully although the

in every detail, it emphasizes site planning for view property, indoor-outdoor consideration, excellent handling of living area. Open-house hours today are from 2 to 5 p. m. Please follow driving directions.

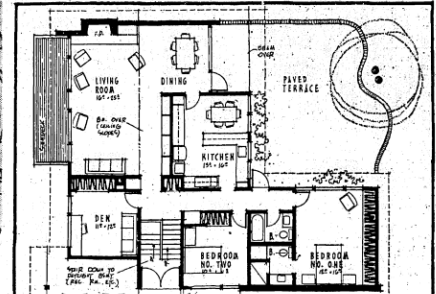
topography of the land was challenging. There is a wide view deck overlooking the lake, a covered terrace adjoining the dining room, a sun court opening to the two bedrooms. When weather permits there is always a comfortable spot for viewing and sunning.

The entrance is on the half level—an acceptable solution when the land slopes sharply to one side. From the country road to the left, here, walls are done in suede brown; floors are carpeted in beige-pink broadloom. View windows look toward the lake. The wide wardrobe is a sound barrier between study and living area. Note the large closet for storage of card tables and chairs. Just outside the study door.

As you step from the upper proportioned and detailed living area you are impressed with its warmth and informality.

Large View Windows

A 22-foot expanse of view window entrains a lovely vista of setting trees and lake. A door opens to the view deck which



is rilled cleverly with nylon rope and 2x4 panels. The end wall of this 24-foot room is finished in used common brick. The fireplace has built-in and front and a quarry-tile hearth. This warm-toned textured wall combines so effectively with the crystal-clear glass and the nib storage wall.

As you step into the living room the wall opposite the view windows is a full wall of built-in and bookshelves. There is a space for radio and record player and high fidelity system with speaker over the built-in bar. Storage cabinets below allow space for games and equipment. Four spotlights in the sloping ceiling highlight each section.

Dining space is in an alcove adjoining the living room. The brick of the fireplace wall carries through this area and out into the covered dining terrace. A floor-to-ceiling window overlooks the pebble-concrete terrace and garden.

Kitchen is Cheery

Kitchen is cheery of the finest we've seen and certainly to be enjoyed by Mrs. Hochberg from early morning until late at night. By that we mean it's the type of kitchen where family and friends will gather while the hostess fixes meals, both indoors and outdoors, and mid-night snacks. The actual size of the room is 14- by 16-feet... an area 6 feet 8 inches by 12 feet is defined for informal meals.

At one end of this space a wide window overlooks the garden... at the other end, and close to the dining room, are cabinets for china and linens. Between eating space and food center is a long serving counter with two-way cupboards suspended from the ceiling and storage cabinets below. Note and half for "her." His side has the unit designed especially for the sun court. The refrigerator is placed beside double ovens built into the wall. A table-top range with five burners is on the end wall.

Storage cupboards are everywhere! Below the tabletop range are sliding shelves for pots and pans and above the cabinets is a long spice and herb shelf. The ceiling is coral, the cabinets are beautifully finished birch with concealed sun litings. The room faces east so that it is bathed in sunshine all morning.

Wardrobes Are Large

Two bedrooms and two baths complete the upper level. At the end of the passageway is the master bedroom, 12 feet by 16 feet. The end wall has floor-to-ceiling windows overlooking the sun court. One 16-foot wall is a wardrobe—half for "him" and half for "her." His side has compartments for hats and purses, drawers for lingerie. Over the long clothes rods is storage space for out-of-season apparel. Walls are painted a light color. The wardrobe is constructed by Saylor, Black, white. The adjoining shower

is tiled in sepi and ivory. Note the smartly styled dressing cabinet and the flood of natural light through the skylight.

The second bedroom is an off-white with soft green cast. One wall has a bank of high windows... the opposite wall has a large wardrobe. The family bath, also skylighted, combines white fixtures and sea-tile and a decorative paper. From the bedroom wing a door opens to the sun court.

On the lower level is laundry room facing the lake for a pleasant work spot. The recreation room is unfinished at present.

The exterior effectively combines used common brick and cedar panels. The pitched roof—2 1/2 inches in 12 inches—is covered with crushed marble. Open-house hours today are from 2 to 5 p. m. Follow driving directions to reach this house of modern style, woodwork is constructed by Saylor, Black, builder.



ST / AIA Home-of-the Month

Lange House

Location ???– 1959

Architect: A.O. Bumgardner



1959 Seattle AIA Honor Award

Homer & Myra Lupton House

3443 72nd Place SE – 1960

Architect: Gene Zema



HOUSE OF MONTH:

Gene Zema Wins Architectural Prize

By ALICE STAPLES
 Staff-Editor, The Times
 President Kennedy was
 "most eager" to receive the
 proposed department of ter-
 ritory
 with a civil
 Albert Bush-
 Brown, assoc-
 iate professor
 of architecture
 at the University
 of Washington
 (Seattle) last
 night.



From left, rear: RUSSELL W. YOUNG, MR. AND MRS. H. P. LUPTON, GEORGE WATTS, GENE ZEMA AND, leaving, VIRGINIA WYSEL.



They admired the House of the Month, trophy, a ceramic fountain and basin.

1960 Seattle AIA Honor Award
 Seattle Times/AIA Home of the Year - 1961

Dr. Rubin House

6105 SE 32nd St – 1958

Architect: Nelson & Sabin



Theo Caldwell House

4348 W Mercer Way – 1954
 Architect: Bassetti & Morse

16 The Seattle Times Sunday, February 14, 1954

Mercer Island Home Offers Comfortable Living in Suburban Setting



OPEN HOUSE: A citation award has been given Bassetti & Morse, architects, A. I. A., by Progressive Architecture Magazine for excellence in design and economy in construction in today's open house. Theo Caldwell is the builder; Richard M. Stern the mechanical engineer. The house will be furnished by Miller-Pollard, design associates.

1,500 Sq. Feet Of Space In House

Congratulations to Bassetti & Morse, architects, A. I. A., for receiving Progressive Architecture Magazine's award citation for excellence in residential design as shown in the plan of today's open house. From noon to 5 p. m. you will be able to

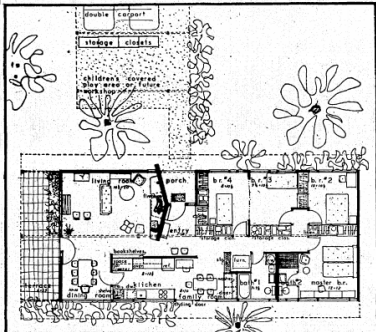
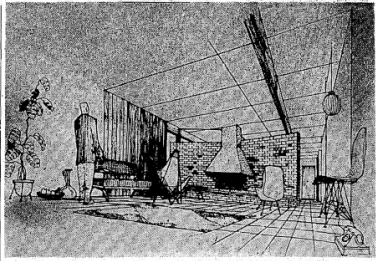
DRIVING DIRECTIONS: To reach today's open house drive across the Lake Washington Bridge, to the Mercer Island Shopping Square, turn right at Harold's and drive south on 7th, Southwest to West Mercer Way. Turn left and follow the main road for a quarter mile to 4348 West Mercer Way.

go through this Mercer Island house of 1,500 square feet, built at a cost of \$238 a square foot. This house is the result of many hours of study by the architects and Theo Caldwell, builder. As Progressive Architecture Magazine points out, "the nature of building housing is such that strict limitations are unavoidable. Planning must be for the 'average man' and

This house of 1,500 square feet includes large living areas, four bedrooms and two baths. Exclusive of property, it can be reproduced for \$9.10 a square foot. Open-house hours are from noon to 5 p. m. The address is 4343 West Mercer Way, Mercer Island.

generally the same for all living patterns. A wall of brick is used on one side of the recessed entry. This brick carries into the entrance hall to form a warm textured interior wall. Looking at the plan you can see that the fireplace wall of brick is both indoor and outdoor. A lamp is set on the raised hearth. Navajo rugs are used on the asphalt-tile floor and a Danish oak and birchwood extension table by Mogensen stands in front of a floor-to-ceiling wall of clear glass. Chairs have woven wicker seats. Note the built-in chest for pottery, silver and linens.

From the dining room we step into a wonderfully lighted work and play area. Appliances are set on two walls and above a counter on one wall. A full wall of windows runs the length of the kitchen-multipurpose area and brings good working light. A 16-foot stainless steel counter that holds sink and disposal, dishwasher and cooking elements. At the end of this residential counter is a 24-square maple chopping block. Above the appliances are cupboards and drawers for utensils. The opposite wall is a freestanding wash-high oven and



Progressive Architecture Mag.
 Citation for Excellence

Herbert Gottschalk House

4445 E Mercer Way – 1961

Architect: Cooper & Sawers



Fred & Patsy Hutchinson House

Location ?? -1959

Architect: Unknown



FRED HUTCHINSON
CANCER RESEARCH CENTER



Database of the Annual Seattle Area Parade of Homes 1949-1960



Washington State Department of Archaeology & Historic Preservation
Compiled by Michael Houser, State Architectural Historian, 2010

Seattle Area Parade of Homes



The Seattle Times Sunday, Sept. 11, 1959

View Residence in Mercerdale 3,000 Sq. Feet In 2-Level House

Mercerdale, popular Seward Island community where quality homes are springing up fast in another residential area where a home designed by Donald Johnson and constructed by Robinson & Stewart is featured during the Parade of Homes.

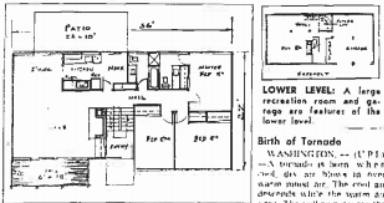
Mercerdale, is a quarter-mile from a well established shopping center, close to fine schools and boasts of plans for a community swimming pool for growing families who prefer suburban living. There are 238 building sites in the area. Approximately 25 homes will be open for inspection during the Parade.

The 1,800-sq.-ft. property was utilized to best advantage by the designing of a two-level, multilevel entry house oriented to sun for outdoor living and in the view for year-round enjoyment.



OPEN HOUSE: Donald Johnson designer, has planned a two-level home of approximately 1,500 square feet in Mercerdale, a rapidly developing suburban area on Mercer Island, south of the shopping center Robinson & Stewart is the builder.

This is one of 25 houses open during the Parade of Homes. These include contemporary, traditional and transitional styles. Plans are under way for a community swimming pool.



UPPER-LEVEL PLAN: The multilevel entry provides easy access to the upper living level and the lower recreation space and two-car garage. The 1,500 square feet of living space include living-dining area, kitchen and breakfast room, master bedroom and shower, two bedrooms and family bath. Bath dining area and breakfast room opens onto a sun patio. The lower level also has 1,500 square feet.

LOWER LEVEL: A large recreation room and garage are features of the lower level.

Birth of Tornado
WASHINGTON — (UPI) — A tornado is being blamed for the death of a woman and the destruction of a house in a small town in Iowa.

Queen Liked Collies
WASHINGTON — (UPI) — Queen Victoria's favorite dog was the collie, says the National Geographic magazine.

Senators...
WASHINGTON — (UPI) — The Senate has passed a bill to... (text is partially obscured)

MERCERDALE

HOMES BY SORIANO BROS.

23 MODEL HOMES

OPEN Noon to 8 p.m. EVERYDAY

3403 77th Ave. S. E. No. 19 on the map.
3868 77th Ave. S. E. No. 29 on the map.

FROM \$20,000 to \$22,950
Terms to suit

FEATURES:

- WESTERN LIVING
- 3 TO 4 BEDROOMS
- 2 1/2 TO 3 BATHS
- SPACIOUS
- SWIMMING POOL
- LAKE & MOUNTAIN VIEW
- 2 CAR GARAGE OR CARPORTS
- 2 FIREPLACES AND BARBECUE
- STENOGRAPHIC SOUND ROOM PLUS IN
- 21 MINUTES TO DOWNTOWN SEATTLE

ANSWER THESE QUESTIONS:

Answer: Pacific Blue Sky, Inc., 1400 4th Ave., Seattle, Wash. 98101
or West Coast Office on the Valley in N.E. 10th Ave., Seattle

WESTINGHOUSE...

These Homes feature Westinghouse Electrical Appliances, such as a complete range, kitchen sink, dishwasher and garbage disposal for Cordis's Stopping Children.

Robert B. Borg
REALTORS

BELLEVUE KIRKLAND

1959 N. E. 90 St. 98148-21 98148-21



American Homes "Best Homes for the Money"

Wembley Lane – 1959

Architect: ??



"BEST HOME for the Money"
AWARD-WINNER
Parade of Homes Open House

HOME
Best Home
for the Money
AWARD

Entry No. 60

This home was chosen by AMERICAN HOMES MAGAZINE as one of the "BEST HOMES FOR THE MONEY" in Washington State.

18,325⁰⁰
Bids like on Your List

VAUGHTERS Construction Co.
Builder of distinguished homes 1M. 2-8741

DRIVING DIRECTIONS
From the University of Washington
1. Take University Avenue to the University of Washington
2. Turn right on University Avenue
3. Turn right on University Avenue
4. Turn right on University Avenue
5. Turn right on University Avenue

17 BEST HOUSE BUYS



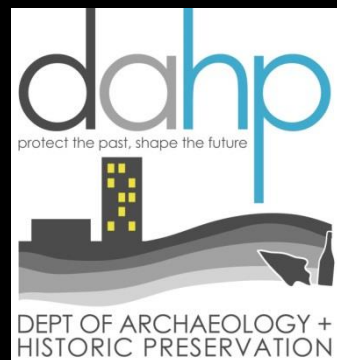


Department of Archaeology & Historic Preservation

1063 S. Capitol Way

Suite 106

Olympia, WA 98501



Michael Houser

State Architectural Historian

(360) 586-3076

Michael.houser@dahp.wa.gov