

WASHINGTON HERITAGE REGISTER

A) Identification

Property Name: **Smith Hollow School**
Address: 113 N. Front Street
City: Dayton County: Columbia

B) Site Access (describe site access, restrictions, etc.)

Public access is limited to the Smith Hollow School Museum. Contact Blue Mountain Heritage Society, PO Box 163, Dayton, WA 99328 or email Paul Moisio, President, prmoisio@gmail.com

C) Property owner(s), Address and Zip

Name: Blue Mountain Heritage Society
Address: PO Box 163
City: Dayton State: WA Zip: 99328

D) Legal boundary description and boundary justification

Tax No./Parcel: City of Dayton Tax 1, Lots 4, 5, 6, 7 on Block 8
Boundary Justification: The nominated property includes the entire legal tax lot.

FORM PREPARED BY

Name: Linda Yeomans
Address: 501 W. 27th Avenue
City / State / Zip: Spokane, WA 99203 Phone: 509-456-3828

WASHINGTON HERITAGE REGISTER

E) Category of Property (Choose One)

- building structure (irrigation system, bridge, etc.) district
 object (statue, grave marker, vessel, etc.) cemetery/burial site
 historic site (site of an important event) archaeological site
 traditional cultural property (spiritual or creation site, etc.)
 cultural landscape (habitation, agricultural, industrial, recreational, etc.)

F) Area of Significance – Check as many as apply

- The property belongs to the early settlement, commercial development, or original native occupation of a community or region.
- The property is directly connected to a movement, organization, institution, religion, or club which served as a focal point for a community or group.
- The property is directly connected to specific activities or events which had a lasting impact on the community or region.
- The property is associated with legends, spiritual or religious practices, or life ways which are uniquely related to a piece of land or to a natural feature.
- The property displays strong patterns of land use or alterations of the environment which occurred during the historic period (cultivation, landscaping, industry, mining, irrigation, recreation).
- The property is directly associated with an individual who made an important contribution to a community or to a group of people.
- The property has strong artistic, architectural or engineering qualities, or displays unusual materials or craftwork belonging to a historic era.
- The property was designed or built by an influential architect, or reflects the work of an important artisan.
- Archaeological investigation of the property has or will increase our understanding of past cultures or life ways.

WASHINGTON HERITAGE REGISTER

G) Property Description

The Smith Hollow School is a good example of rural public schoolhouses built during the early 20th century in Washington State. When constructed in 1900, the single-story, cross-gabled, frame schoolhouse was located in the hinterlands of Columbia County and was sited in a narrow gulch surrounded by broad rolling fields, pasture, and cultivated farmland. Like so many rural schoolhouses erected in the early 1900s, the Smith Hollow School was constructed with a modest scale, formal symmetrical massing, cross gable roof, exterior horizontal wood drop siding, double-hung wood-sash windows, and a distinguishing schoolhouse cupola/belfry on the roof crest. A wood frame outhouse was built south behind the Smith Hollow School, and had a low seat with three cutout holes. In 2010, the schoolhouse was rescued from impending demolition and moved eight miles southeast to the center of Dayton, Washington. Successfully relocated, the repaired and rebuilt Smith Hollow School is in excellent condition and retains five of the seven qualities of integrity in its original design, materials, workmanship, feeling, and association. At its Dayton site, the Smith Hollow School continues to reflect the designs and materials of early 20th-century public schoolhouses erected throughout rural Columbia County in southeastern Washington.

The Smith Hollow School is located in the City of Dayton Addition Tax 1 on Block 8, Lots 4, 5, 6, and 7, one-half city block west of Main Street (interstate Highway 12). The four contiguous lots total 243.72 feet in width and 119.95 feet in depth, and are located on the southwest intersection corner of E. Commercial Street and N. Front Street. Facing north/northeast, the schoolhouse is sited in the north half of the property with a duplication of its original directional compass angle when built in 1900. The schoolhouse has an irregular rectangular footprint that measures 30 feet wide and 36 feet deep, and is surrounded by a diagonal gridwork of paved and unpaved city streets, a combination of historic and contemporary industrial warehouses and commercial buildings, and the banks of the Touchet River as it meanders through Dayton.

Preparations for relocating the Smith Hollow School began in 2008. In poor condition, an original frame outhouse behind the school was removed and demolished. A small, one-story frame annex added to the rear of the schoolhouse in the 1930s was removed and demolished. The school's original roof rafters and cupola/belfry were removed and saved. The building was moved to Dayton and lowered onto a new poured concrete foundation with a crawl space. A new lower cross-gable addition at

the south rear of the schoolhouse replaced the demolished 1930s annex, replicating the same dimensions, design, and exterior materials of the 1930s annex. A combination of original and new roof rafters were installed, and a new asphalt shingle roof was installed. The original siding was stripped and repainted white (original schoolhouse color). The exterior trim was repaired/rebuilt and repainted dark green, the original trim color. The windows, all original, were saved, repaired, and repainted. The schoolhouse cupola/beltry was reinstalled on the ridgecrest in its original location. The front door at the north façade of the schoolhouse was originally located on the east face, and was restored to its original position at that location. A window originally located on the north facade in the area of the front door was reinstalled when the door was removed. An ADA-accessible painted wood ramp with handrails was installed from grade to the front door at the east face of the schoolhouse. A back door was installed in the annex addition, and an ADA-accessible wood ramp with handrails was built from grade to the back door.

The Smith Hollow School is one story with one large school classroom, a cloak room, and a front entry hall located in the north 60% of the building. The rear south 40% of the schoolhouse is located in the attached annex which has an office area, a public ADA-accessible bathroom, and an interior enclosed staircase that descends to a crawl space and mechanical equipment beneath the first floor. After the Smith Hollow School was transported to its new location in Dayton, the dropped ceiling (circa 1945-1950s remodel) was removed and a new ceiling made of painted drywall was installed at the building's original 12-foot ceiling height. Damaged interior walls were repaired, and all walls and ceilings were repainted. Interior woodwork, window and door surrounds, and interior doors were replaced as necessary, repaired and repainted. The building's original tongue-in-groove vertical paneled wainscot was badly damaged from wear and alterations, and was replaced and repainted with new wood wainscot in the exact design and dimensions as the original. Original fir plank floors were badly damaged and replaced with new fir plank floors throughout the entire building. Schoolhouse style pendant drop light fixtures were installed. Chalk boards/blackboards were installed on the east wall. A large curtain once used across a stage located between the 1930s annex and the classroom hangs on the south wall (the stage was not original to the building).

As part of the rehabilitation project a recreated out was built using some elements from the original outhouse. The new structure is a simple rectangular structure with a gable roof clad in wood shingles. The structure has no windows and is covered in board-and-batten siding.

H) Significance

Smith Hollow School is historically significant for its direct impact and connection as a public school that offered public education to the residents of the Smith Hollow Gulch community. When the schoolhouse was no longer used as a public educational facility to house and educate students, the building was used as a social hub, meeting place,

family reunion center, and community hall. The popular schoolhouse was long revered by the community and was in continual use from its construction in 1900 to school consolidation in 1933 as a public school. From 1900 to the mid 1980s it served as a community center. The building and its outhouse especially built for children is architecturally significant as one of the few remaining intact examples of early 20th-century rural public schoolhouses that were built throughout Columbia County.

The history of Smith Hollow School began when it was built in 1900 in the hinterlands of rural Columbia County in southeastern Washington State. As documented in federal government records, the area around the Smith Hollow School was opened for homesteading in the 1860s, and surveyed in 1873. Government field notes described the Smith Hollow area as "rolling, hilly" land with "prairie soil...an occasional Balsam and Willow tree...and good grass." Descriptions of buildings, schools, or any human habitation were missing in field notes, indicating the area at that time was not inhabited by neither Indian tribes nor pioneers. However, a short two years later in 1875, Columbia County Public School District #24 was organized and a small rural schoolhouse was built, an indication that pioneers had begun to homestead the region.

In 1880, farmer/rancher John Goodwin was awarded U.S. Patent #767 for 160 acres of homestead land in the Smith Hollow area, including the 1875 schoolhouse. By the end of the 1890s, the land was owned by W. J. Hillman. In 1900, the 1875 schoolhouse was replaced by the nominated structure on Hillman's land. Hillman then donated two-thirds acre on which the school was built to Columbia County Public School District #24.

The new 1900 Smith Hollow School was embraced by the community and was applauded as "one of the best in the county." A May 18, 1924 newspaper article in the Dayton Chronicle described the school's "equipment for teaching" as the "best" quality, the school's "community spirit" as "excellent," and the school's impact on the community as positive. The article reported people were "behind the school, boosting enthusiastically for its support," and stated 90% of those [students] graduating from this school in the past five years have graduated from or are now attending high school."

Smith Hollow School offered instruction for grades one through eight, and students ranged in age from six to 20 years. Teachers were paid \$90 to \$114 a month, an indication the school district was one of the wealthier in the county.

In 1933, Columbia County Public School District #24 was consolidated into Dayton Public School District #2, and the Smith Hollow School was no longer used as a public school. The building, however, was not abandoned but continued to serve as an important community center. The building was used on a regular basis as a community theater, a venue for speakers, spelling bee enthusiasts, musicians, churches, social clubs, family activities, reunions, weddings, funerals, and agricultural grange education and opportunities. For example, at different times the Harmony Home Economics Club and the Farm Bureau met regularly in the schoolhouse.

Community holiday celebrations, including Easter dinners, Easter egg hunts, and other family gatherings were held in the school building.

Today the building demonstrates the community's commitment to public education and as a home to organized community center activities. Still intact and in excellent condition as a rehabilitated schoolhouse building, the Smith Hollow School is one of the few remaining early 20th-century rural public schoolhouses built in Columbia County. It stands as a poignant reminder of the importance and evolution of education and rural public schoolhouses that were built to facilitate and implement education in the early 20th century throughout Columbia County.

WASHINGTON HERITAGE REGISTER

I) Documentation

Xerox and attach any information or evidence that supports the property's significance.

Written Sources (books, articles, newspapers):

1913 Ogle Map

1933 Metsker Map

1973 Metsker Map

2015 Google satellite map

Dayton, WA public records, Dayton City Hall, Dayton, WA

"First School Building in District 24 Was Erected on Goodwin Property." Dayton Chronicle, 18 Nov 1924

Hutchens, Charlotte Ostroot. Early Columbia County Schools. 1992.

United States Federal Field Notes, 1873-1879. Dept of the Interior, Bureau of Land Management

United States Federal Patent, 1879. Dept of the Interior, Bureau of Land Management

Washington State University Archive Library. 1930 photograph of Smith Hollow School. WSU, Pullman, WA.

Yeomans, Linda. Washington State Historic Resources Inventory for the Smith Hollow School, 2009. Washington State Department of Archaeology & Historic Preservation, Olympia, WA

Oral History/Interviews:

Oral history interview with Elizabeth Thorn, Dayton, WA.

Oral history interview with Ginny Butler, Dayton, WA and Spokane, WA.

J) Map and Photographs

Attach copies of historic maps or photos if available, and current photos (5 x 7 B & W). Include a current map – appropriate U.S.G.S. map and parcel map – with the location of the property and its boundaries clearly marked. (see instructions)

WASHINGTON STATE HERITAGE REGISTER

*Smith Hollow School
Columbia County, WA*



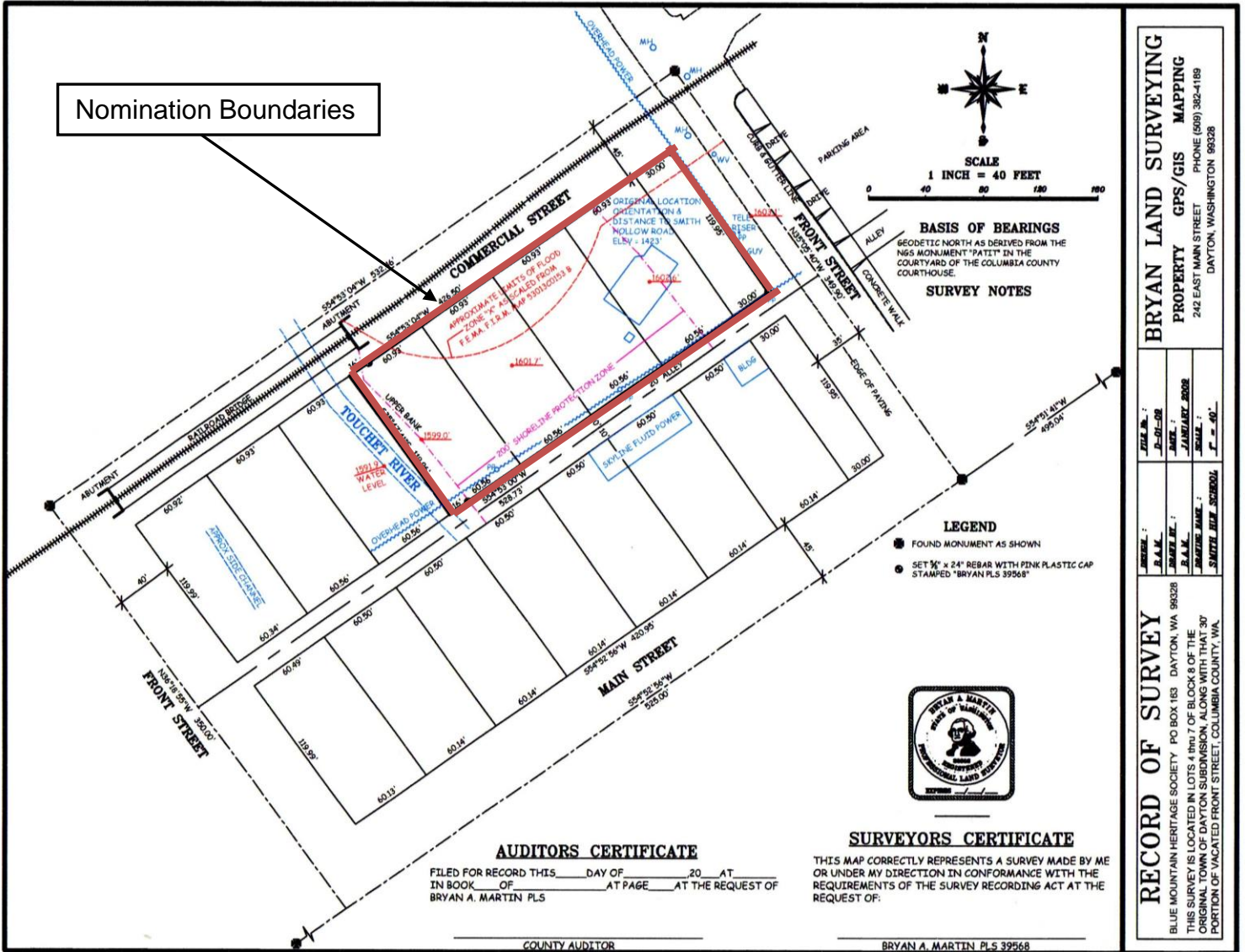
**Smith Hollow School
113 N. Front Street
Dayton, WA**

Source: Google Maps 2015



WASHINGTON STATE HERITAGE REGISTER

Smith Hollow School
Columbia County, WA

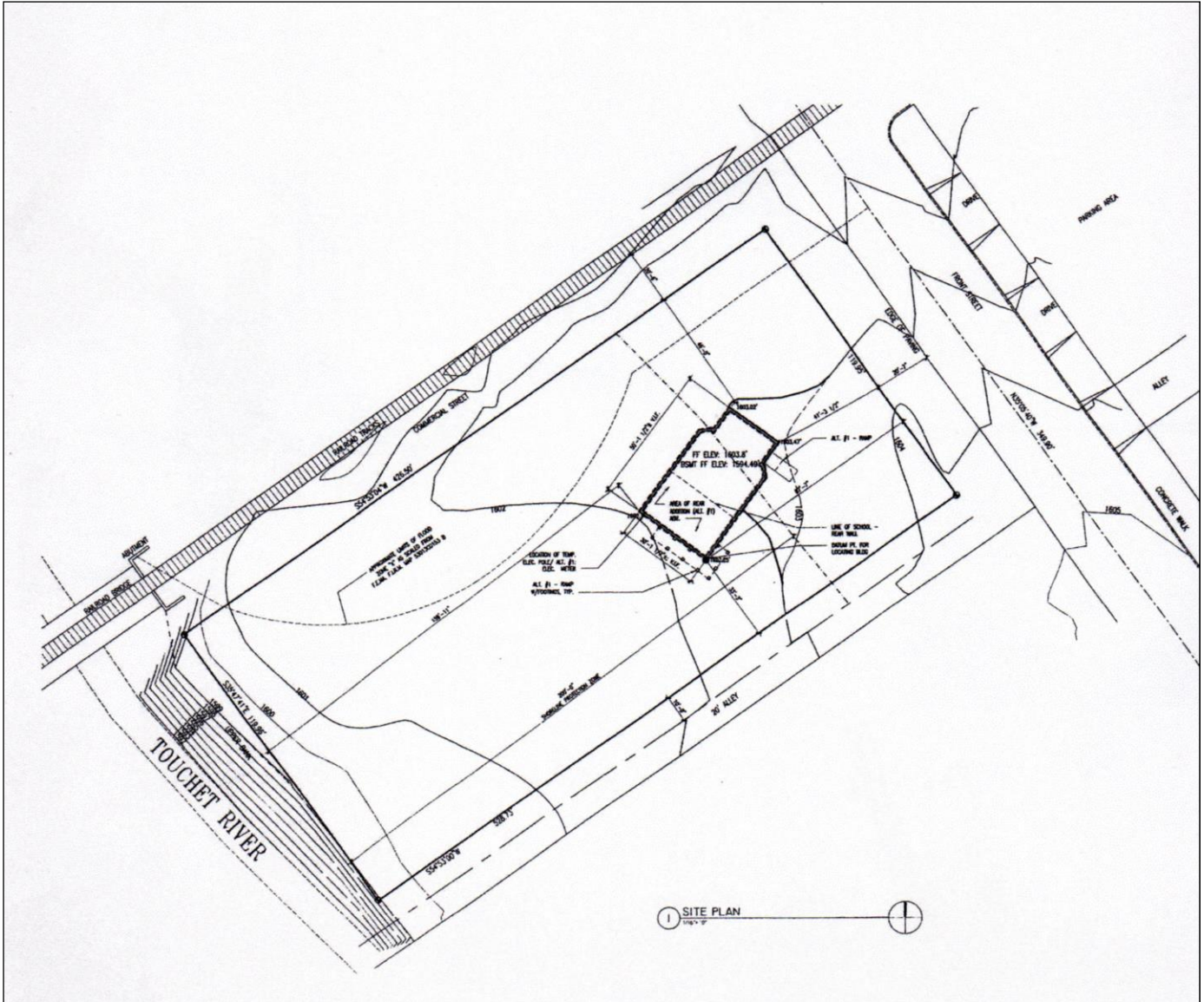


Smith Hollow School
113 N. Front Street, Dayton, WA

City of Dayton Plat Map

WASHINGTON STATE HERITAGE REGISTER

Smith Hollow School
Columbia County, WA



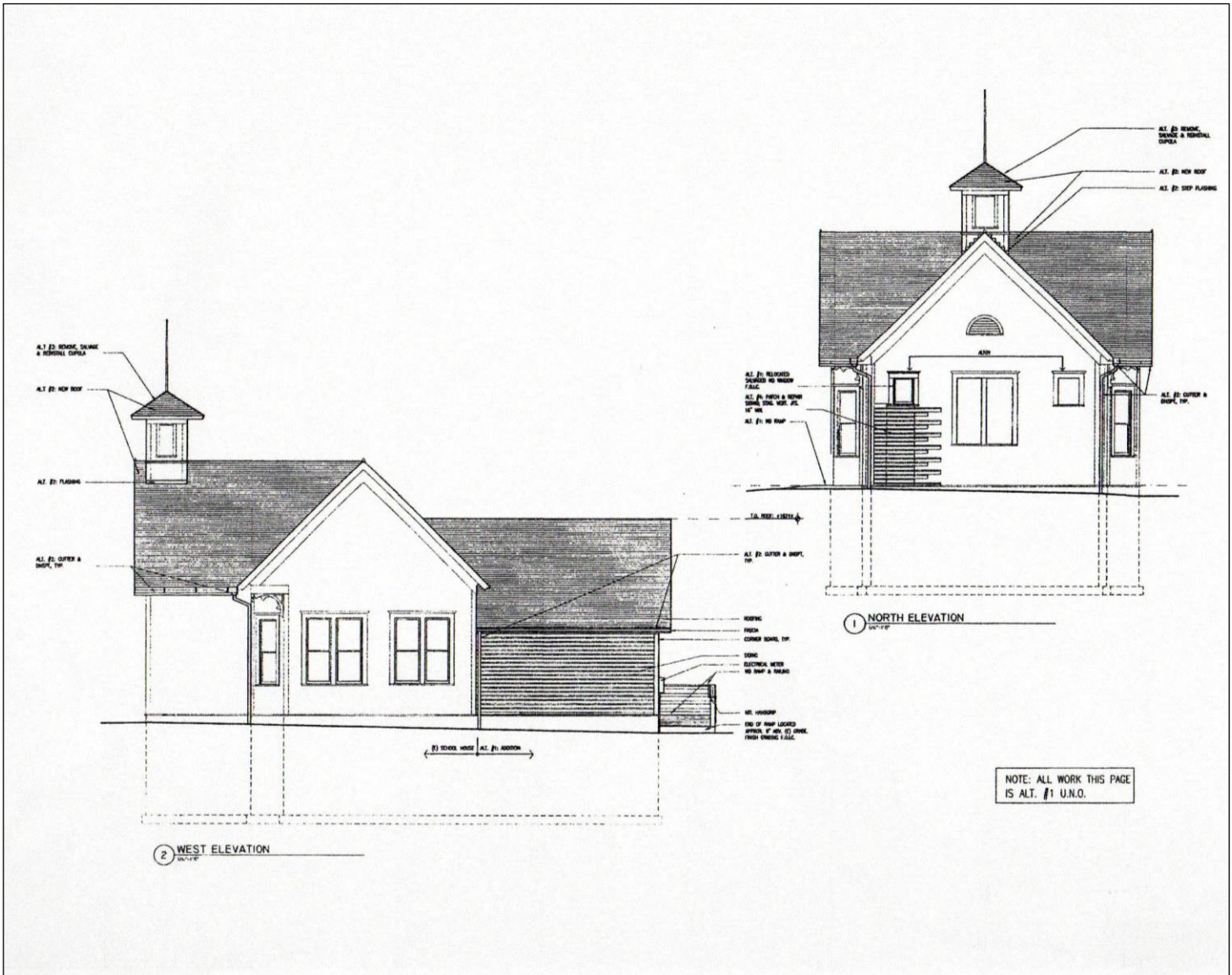
Smith Hollow School

Site Plan



WASHINGTON STATE HERITAGE REGISTER

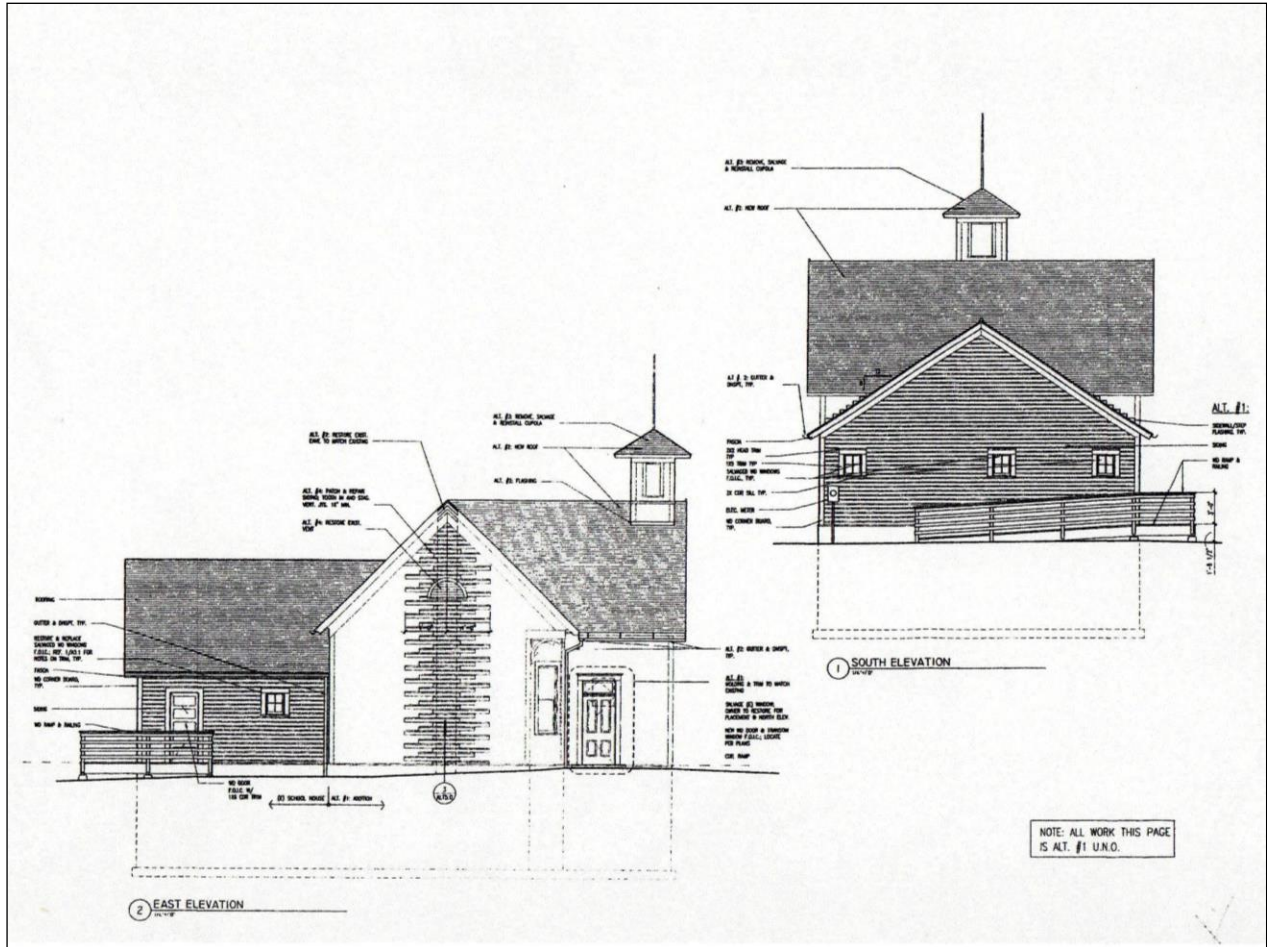
*Smith Hollow School
Columbia County, WA*



Smith Hollow School
North and West Elevations in 2015

WASHINGTON STATE HERITAGE REGISTER

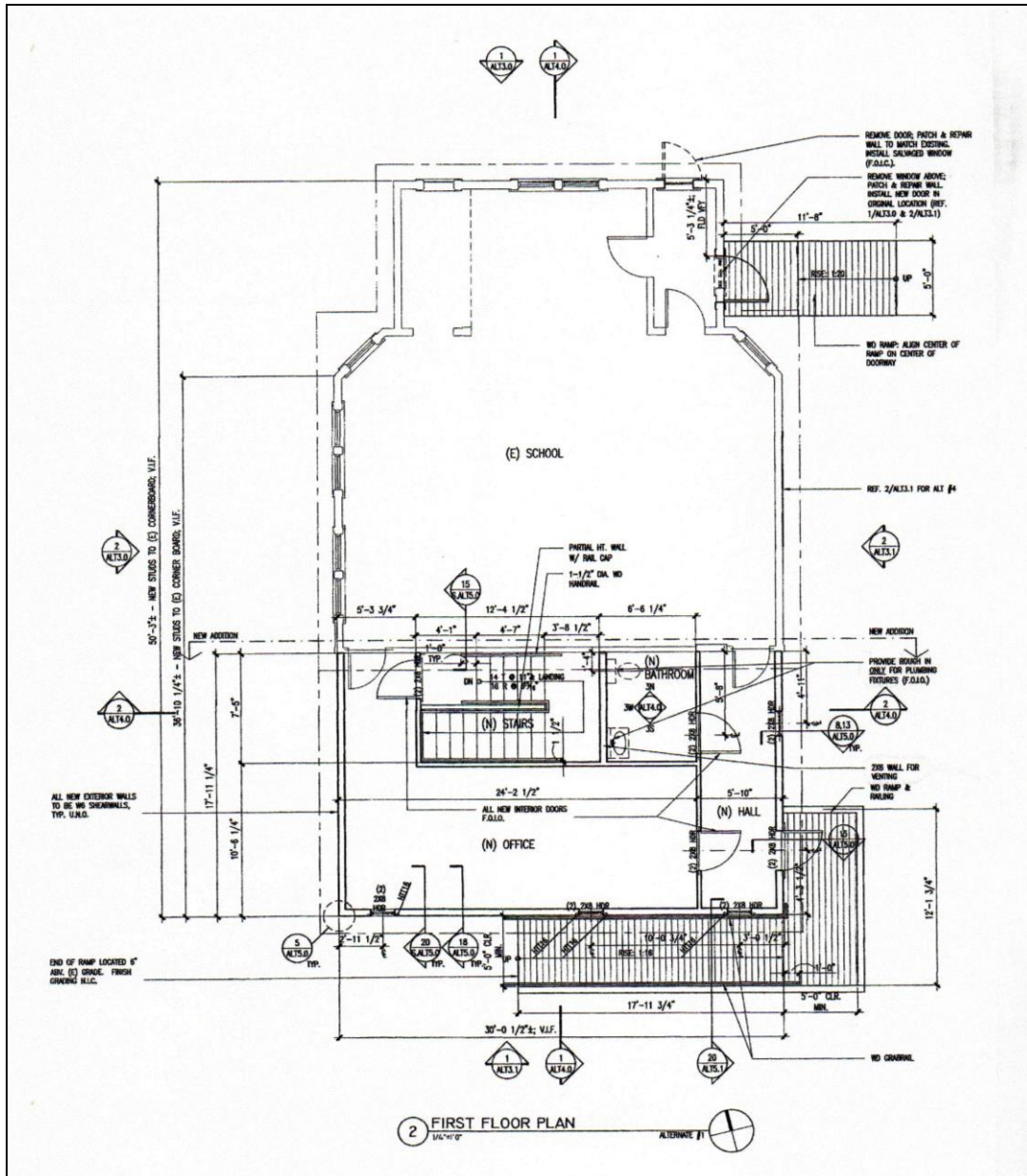
Smith Hollow School
Columbia County, WA



Smith Hollow School
East and South Elevations in 2015

WASHINGTON STATE HERITAGE REGISTER

Smith Hollow School
Columbia County, WA



**Smith Hollow School
First Floor Plan in 2015**

WASHINGTON STATE HERITAGE REGISTER

*Smith Hollow School
Columbia County, WA*

Typical Rural Schools in Columbia County



**First School Building in District 24
Was Erected on Goodwin Property**

SMITH HOLLOW SCHOOL WAS ORGANIZED IN 1875 AND A
BUILDING ERECTED—COMMUNITY SCHOOL
SPIRIT IS EXCELENT

Smith Hollow School, District No. 24—Glenna Brines, teacher.

District No. 24 was organized in 1875, and the first school building was erected on the old Goodwin property, now owned by F. E. Pool. In 1900 a new building was erected on a plot donated by W. H. Hillman, which is still being used. At the present time this school is considered one of the

best in the county. The equipment for teaching is of the best.

The community spirit is excellent, and the people are all behind the school boosting enthusiastically for its support. The pupils have also been interested in their work, and 90 per cent of those graduating from this school in the past five years have graduated from or are now attending high school.

**Smith Hollow School
511 Smith Hollow Road
Dayton, WA**

Source: Dayton Chronicle, 18 November 1924

WASHINGTON STATE HERITAGE REGISTER

*Smith Hollow School
Columbia County, WA*

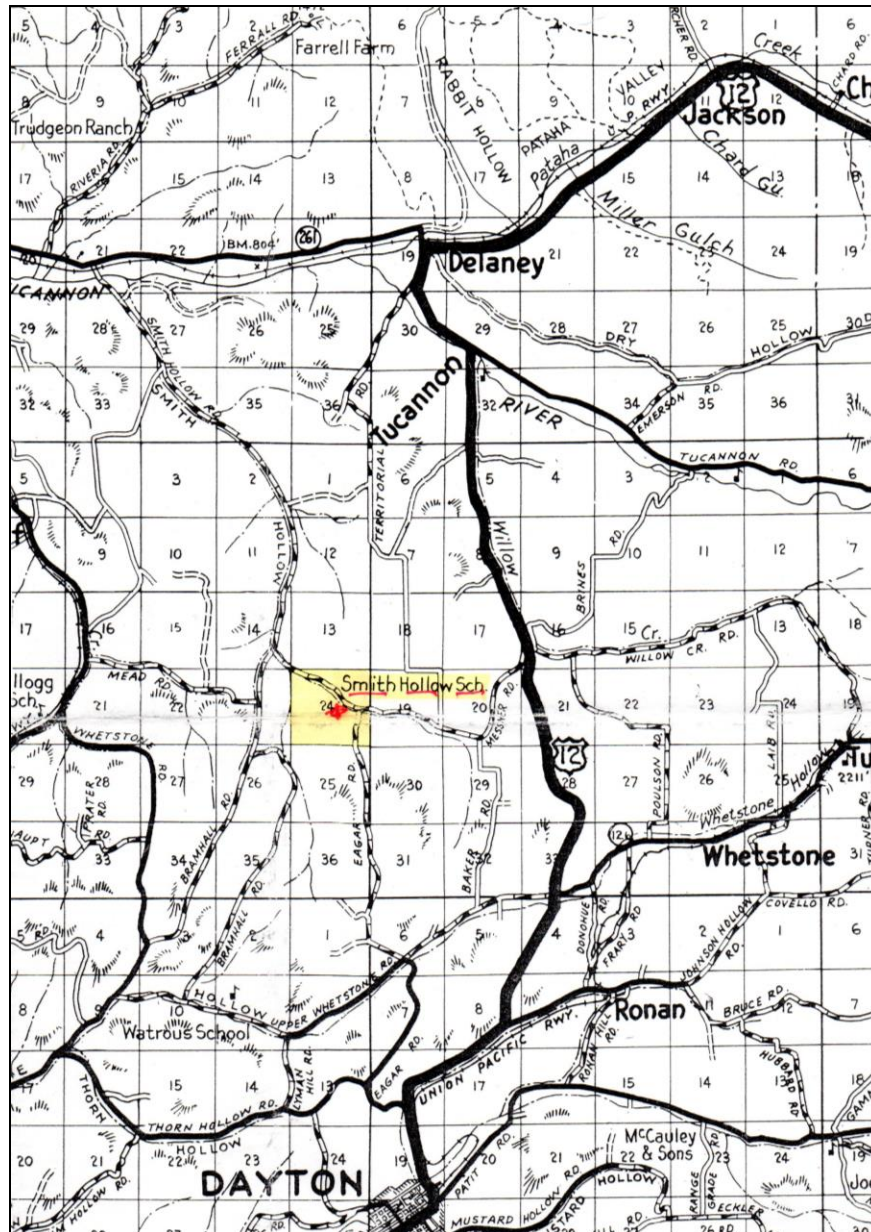


***1930 photo of Smith Hollow School
511 Smith Hollow Road
Dayton, WA***

Source: Washington State University Archive Library

WASHINGTON STATE HERITAGE REGISTER

Smith Hollow School
Columbia County, WA

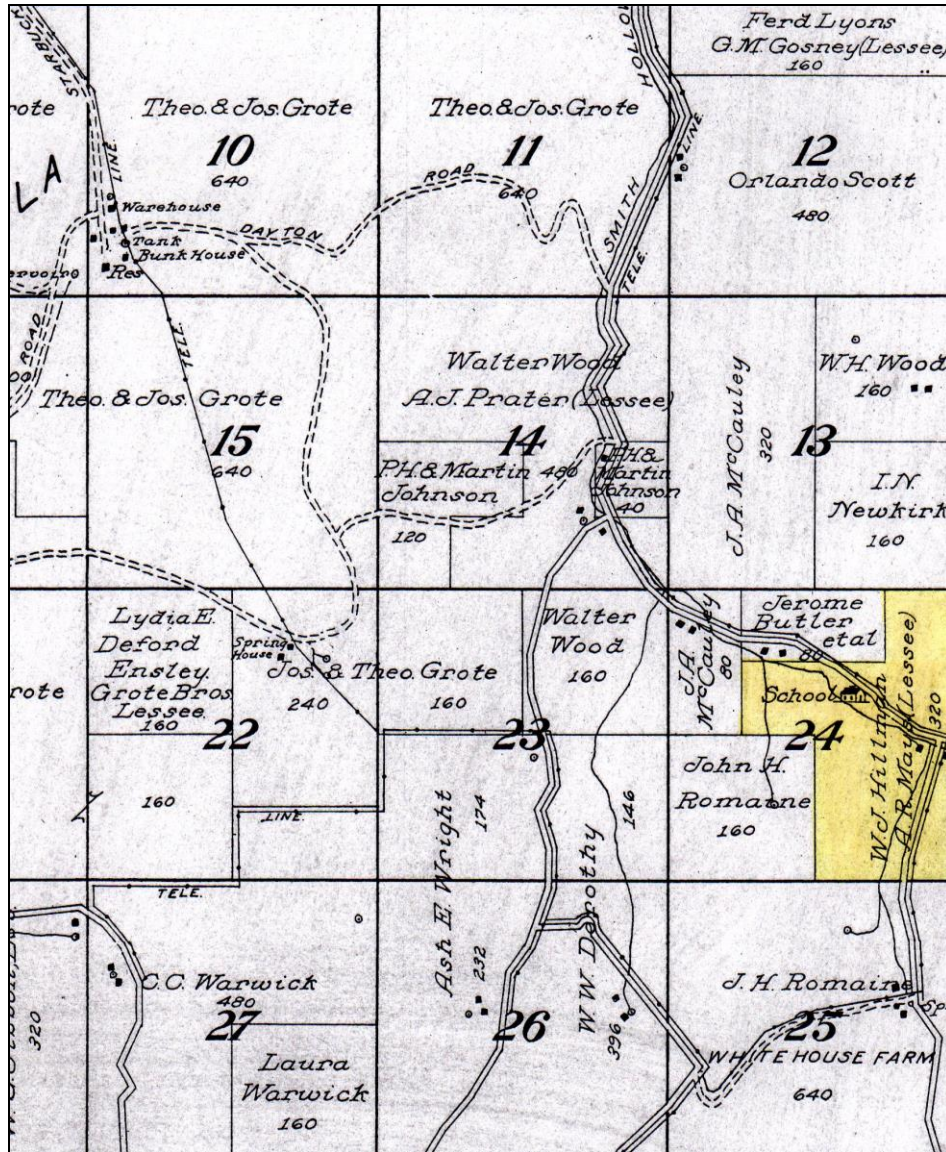


**1933 location of Smith Hollow School
511 Smith Hollow Road
Dayton, WA**

Source: 1933 Metsker Map

WASHINGTON STATE HERITAGE REGISTER

Smith Hollow School
Columbia County, WA



**1913 location of Smith Hollow School
511 Smith Hollow Road
Dayton, WA**

Source: 1913 Ogle Map

WASHINGTON STATE HERITAGE REGISTER

*Smith Hollow School
Columbia County, WA*



North façade of Smith Hollow School in 2008 at original site

***Source: Columbia County Assessor's Photo
Dayton, WA***

WASHINGTON STATE HERITAGE REGISTER

*Smith Hollow School
Columbia County, WA*



Northwest façade in 2008 at original site



West façade in 2008 at original site

WASHINGTON STATE HERITAGE REGISTER

*Smith Hollow School
Columbia County, WA*



East facade in 2008 at original site



Southeast corner of outhouse behind schoolhouse in 2008 at original site

South rear of schoolhouse and east face of schoolhouse (with chimney) in 2008

WASHINGTON STATE HERITAGE REGISTER

*Smith Hollow School
Columbia County, WA*



1 photo of 16 photos

*WA_Columbia County_Smith Hollow School_0001.tif
Looking southeast in 2015*



2 of 16
WA_Columbia County_Smith Hollow School_0002.tif
Looking southeast in 2015

WASHINGTON STATE HERITAGE REGISTER

*Smith Hollow School
Columbia County, WA*



3 of 16
WA_Columbia County_Smith Hollow School_0003.tif
Looking south in 2015



4 of 16
WA_Columbia County_Smith Hollow School_0004.tif
Looking west in 2015

WASHINGTON STATE HERITAGE REGISTER

Smith Hollow School
Columbia County, WA



5 of 16
WA_Columbia County_Smith Hollow School_0005.tif
Looking northwest in 2015



WASHINGTON STATE HERITAGE REGISTER

Smith Hollow School
Columbia County, WA



7 of 16
WA_Columbia County_Smith Hollow School_0007.tif
Outhouse built to mimic original outhouse behind schoolhouse



8 of 16

WA_Columbia County_Smith Hollow School_0008.tif
Outhouse interior seating mimics original outhouse seating

WASHINGTON STATE HERITAGE REGISTER

Smith Hollow School
Columbia County, WA



9 of 16

WA_Columbia County_Smith Hollow School_0009.tif
First floor interior of school, looking northeast in 2015



10 of 16
WA_Columbia County_Smith Hollow School_0010.tif
Looking east in 2015

WASHINGTON STATE HERITAGE REGISTER

Smith Hollow School
Columbia County, WA



11 of 16
WA_Columbia County_Smith Hollow School_0011.tif
Looking southeast in 2015



12 of 16
WA_Columbia County_Smith Hollow School_0012.tif
Looking southwest in 2015

WASHINGTON STATE HERITAGE REGISTER

Smith Hollow School
Columbia County, WA



13 of 16
WA_Columbia County_Smith Hollow School_0013.tif
Looking northwest in 2015



14 of 16
WA_Columbia County_Smith Hollow School_0014.tif
Looking south from hallway into office in 2015

WASHINGTON STATE HERITAGE REGISTER

Smith Hollow School
Columbia County, WA



15 of 16
WA_Columbia County_Smith Hollow School_0015.tif
Hallway to office, looking east in 2015

WASHINGTON STATE HERITAGE REGISTER

*Smith Hollow School
Columbia County, WA*



16 of 16 photos
WA_Columbia County_Smith Hollow School_0016.tif
Bathroom off hallway to office, looking west in 2015