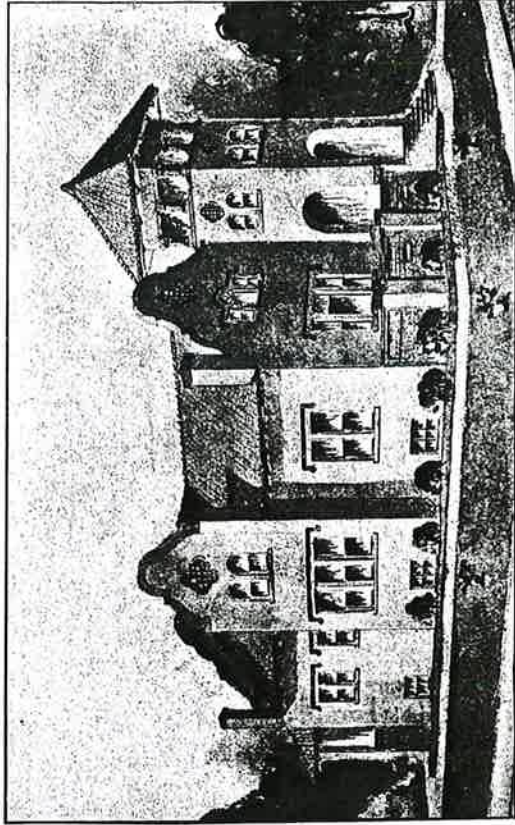


V. W. VOORHEES, ARCHITECT, SEATTLE, WASH.



DESIGN NO. 90.

The width of this five-room Mission bungalow is 28 feet; length 48 feet; height of first story 9 1/4 feet; height of second story 8 feet; space on the second floor for four large rooms; height of basement 7 feet.

Exterior, plaster or concrete.

Concrete basement, porcelain plumbing, gas and electric wiring.

Interior finished with fir.

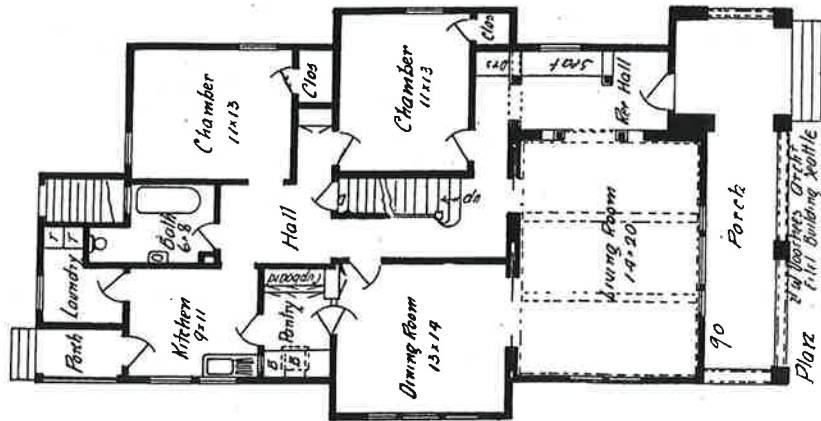
Paneled wainscoting and beamed ceilings in living and dining rooms.

Approximate cost of construction, \$4,000.00.

Additional cost of hot air heating plant, \$175.00.

Cost of one set of plans, specifications, details and bill of material, \$15.00.

Cost of two sets of plans, specifications, details and bill of material, \$18.00.



1925
Western Home
Builder

(Any plan can be reversed to suit location)