

ANATOMY OF A MAIN STREET BUILDING



developed by

**Michael
Houser**
*State
Architectural
Historian*



May 2011

ANATOMY OF A MAIN STREET BUILDING

Terry Building; Port Townsend



Cornice
The projecting elements at the top of the exterior wall.

Upper Floor(s)
The non-retail volume above the ground floor.

Storefront
The front exterior wall of a commercial space, typically with large area of glass.

Pilaster
An attached rectangular column.

Bulkhead
The area between the sidewalk and the display windows: can be of wood, tile, or metal, or can be glazed.

Display Window
The main areas of clear glass on a storefront behind which goods are arranged. Usually of polished plate glass.

Transom
Upper windows of a storefront; can be operable or fixed, clear or divided.



Bracket
A support for a projection, typically constructed of wood, press metal or cast stone.

Window Hood
A projecting member above a window that is both structural and decorative; typically made of stone, metal or wood.

Sash
Operable frame filled with glass.

Sill
Horizontal member immediately below the window assembly.

Lintel
Structural member above a storefront that support the upper wall.

ANATOMY OF A MAIN STREET BUILDING

Stoller Building; Camas



Window Pattern(s)

Rhythm or grouping of windows (ie A, B, B, pattern)

Cornice

The projecting elements at the top of the exterior wall.

Upper Floor(s)

The non-retail volume above the ground floor.

Storefront

The front exterior wall of a commercial space, typically with large area of glass.

Coping

Water resistant covering of the top of a wall.

String Course

A projecting member that is both structural and decorative; typically made of stone, metal or wood.

Sash

Operable frame filled with glass.

Sill

Horizontal member immediately below the window assembly.

Lintel

Structural member above a storefront that support the upper wall.

Pilaster

An attached rectangular column.

Bulkhead

The area between the sidewalk and the display windows: can be of wood, tile, or metal, or can be glazed.

Display Window

The main areas of clear glass on a storefront behind which goods are arranged. Usually of polished plate glass.

Transom

Upper windows of a storefront; can be operable or fixed, clear or divided.

ANATOMY OF A MAIN STREET BUILDING

Baker – Boyer National Bank Building; Walla Walla



Cornice
The projecting elements at the top of the exterior wall.

Upper Floor(s)
The non-retail volume above the ground floor.

Storefront
The front exterior wall of a commercial space, typically with large area of glass.

Pilaster(s)
An attached rectangular column.

Bulkhead
The area between the sidewalk and the display windows: can be of wood, tile, or metal, or can be glazed.

Display Window
The main areas of clear glass on a storefront behind which goods are arranged. Usually of polished plate glass.

Transom
Upper windows of a storefront; can be operable or fixed, clear or divided.

Modillions
A series of scroll-shaped brackets supporting the corona of a cornice.

String Course
A projecting member that is both structural and decorative; typically made of stone, metal or wood.

Bay(s)
Grouping of windows (example has four bays).

Mullion
A vertical member separating windows, or panels set in a series.

Capitol
Top portion of a column or pilaster crowing the shaft

ANATOMY OF A MAIN STREET BUILDING

McGregor's Store; Hooper



Cornice

The projecting elements at the top of the exterior wall.

Storefront

The front exterior wall of a commercial space, typically with large area of glass.

Recessed Entry

An entrance door which is set back from the main façade of the building.

Bulkhead

The area between the sidewalk and the display windows: can be of wood, tile, or metal, or can be glazed.

Display Window

The main areas of clear glass on a storefront behind which goods are arranged. Usually of polished plate glass.

Parapet

A low, solid, protective wall at the edge of a roof.

String Course

A projecting member above a window that is both structural and decorative; typically made of stone, metal or wood.

Exterior Finish

Exterior surfacing material.

Pilaster

An attached rectangular column.

Transom

Upper windows of a storefront; can be operable or fixed, clear or divided.

ANATOMY OF A MAIN STREET BUILDING

Bank of Starbuck; Starbuck



Cornice

The projecting elements at the top of the exterior wall.

Storefront

The front exterior wall of a commercial space, typically with large area of glass.



Bracket

A support for a projection, typically shaped link and inverted "L".

String Course

A projecting member above a window that is both structural and decorative; typically made of stone, metal or wood.

Sash

Operable frame filled with glass.

Sill

Horizontal member immediately below the window assembly.

Pilaster

An attached rectangular column.

Bulkhead

The area between the sidewalk and the display windows: can be of wood, tile, or metal, or can be glazed.

Display Window

The main areas of clear glass on a storefront behind which goods are arranged. Usually of polished plate glass.

Transom

Upper windows of a storefront; can be operable or fixed, clear or divided.

ANATOMY OF A MAIN STREET BUILDING

Pay n' Takit Store; Spokane



Cornice

The projecting elements at the top of the exterior wall.

Storefront

The front exterior wall of a commercial space, typically with large area of glass.

Parapet

A low, solid, protective wall used to obscure a low-pitched roof.

Spandrel Panel

A section of wall, defined as an ornamental panel, typically between two vertical windows or arches.

Awning

Fabric or rigid metal projection offering protection from the weather.

Bulkhead

The area between the sidewalk and the display windows: can be of wood, tile, or metal, or can be glazed.

Corner Entry

Double entry at chamfered corner of building.

Display Window

The main areas of clear glass on a storefront behind which goods are arranged. Usually of polished plate glass.

Transom

Upper windows of a storefront; can be operable or fixed, clear or divided.

ANATOMY OF A MAIN STREET BUILDING

J.C. Penny Store; Puyallup



Cornice

The projecting elements at the top of the exterior wall.

Storefront

The front exterior wall of a commercial space, typically with large area of glass.

Parapet

A low, solid, protective wall used to obscure a low-pitched roof.

Awning

Structural member above a storefront that support the upper wall.

Bulkhead

The area between the sidewalk and the display windows: can be of wood, tile, or metal, or can be glazed.

Display Window

The main areas of clear glass on a storefront behind which goods are arranged. Usually of polished plate glass.

Recessed Entry

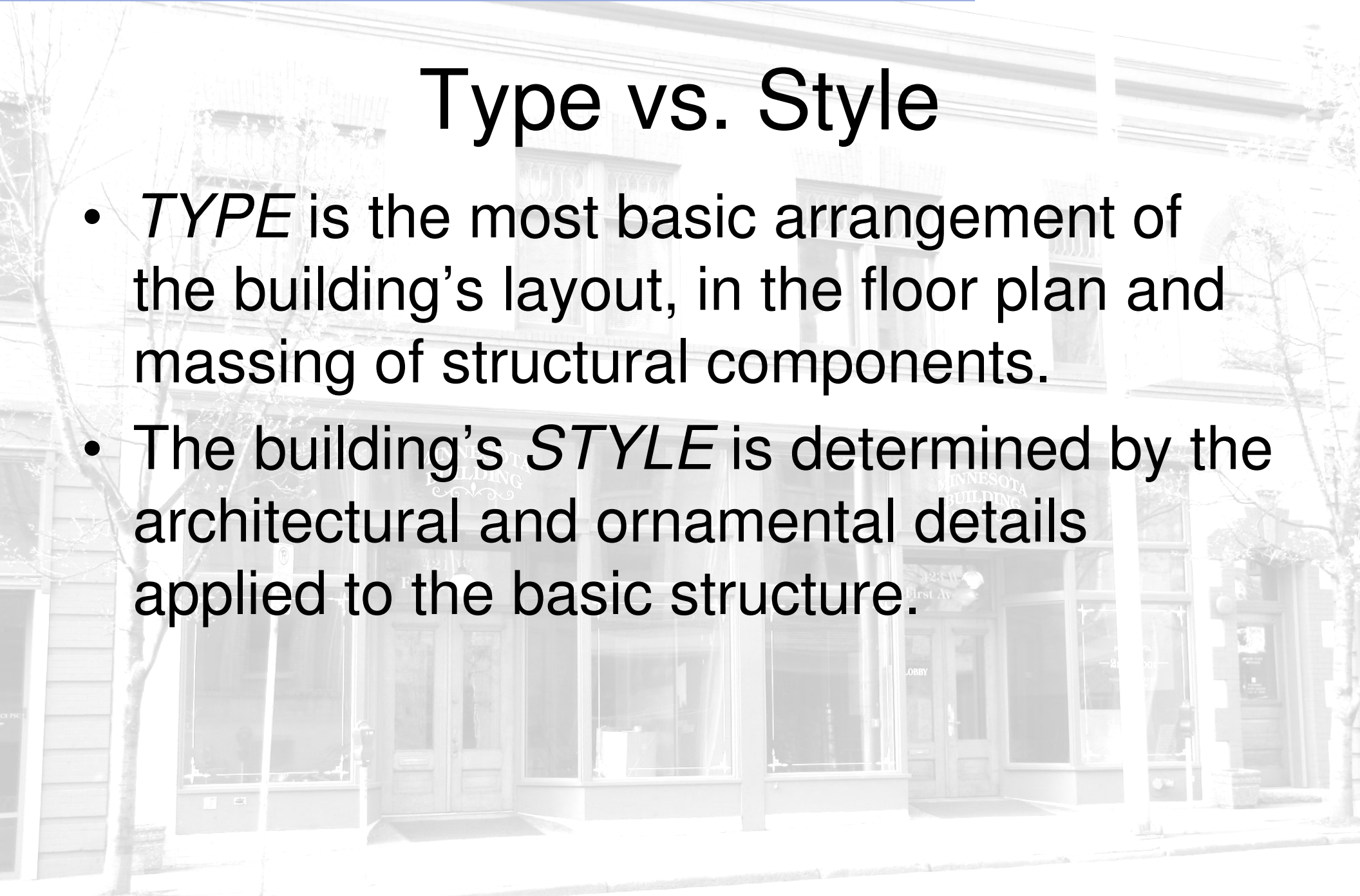
An attached rectangular column.

Transom

Upper windows of a storefront; can be operable or fixed, clear or divided.

Type vs. Style

- *TYPE* is the most basic arrangement of the building's layout, in the floor plan and massing of structural components.
- The building's *STYLE* is determined by the architectural and ornamental details applied to the basic structure.



Commercial Building Types



ANATOMY OF A MAIN STREET BUILDING

Washington State Examples

Commercial – One-Part Block



Medical Lake



Hooper



Walla
Walla

Hamilton



ANATOMY OF A MAIN STREET BUILDING

Washington State Examples

Commercial – One-Part Block



Seattle



Anacortes



Connell



Olympia



Bellingham



Shelton

ANATOMY OF A MAIN STREET BUILDING

Washington State Examples

Commercial – One-Part Block



Thorp



Grandview



Snohomish



Chelan



Norland

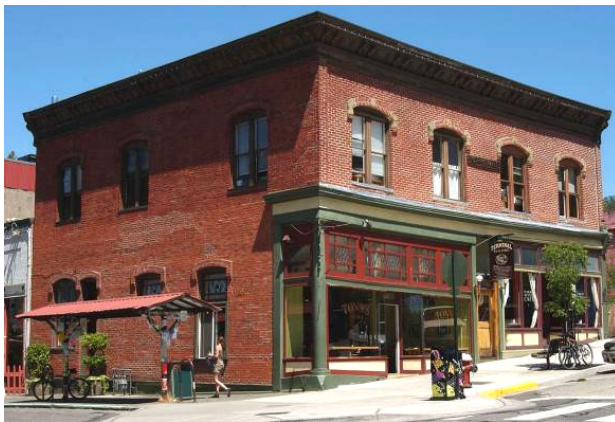
ANATOMY OF A MAIN STREET BUILDING

Washington State Examples

Commercial – Two Part Block



Colfax



Bellingham



Ellensburg



Port Townsend

ANATOMY OF A MAIN STREET BUILDING

Washington State Examples

Commercial – Two Part Block



Olympia



Shelton



Vancouver



Bremerton



Longview

ANATOMY OF A MAIN STREET BUILDING

Washington State Examples

Commercial – One-Part Vertical Block



Yakima



Centralia



Walla Walla



Tacoma

ANATOMY OF A MAIN STREET BUILDING

Washington State Examples

Commercial – One-Part Vertical Block



Kahlotus



Wenatchee



Federal Way



Yakima



Seattle

ANATOMY OF A MAIN STREET BUILDING

Washington State Examples

Commercial – Enframed Window Wall



Vancouver



Olympia



Richland



Centralia



Spokane

ANATOMY OF A MAIN STREET BUILDING

Washington State Examples

Commercial — Stacked Vertical Block



Port Townsend



Seattle



Walla Walla



Seattle



Port Townsend

ANATOMY OF A MAIN STREET BUILDING

Washington State Examples

Commercial — Two Part Vertical Block



Spokane



Spokane



Seattle



Seattle

ANATOMY OF A MAIN STREET BUILDING

Washington State Examples

Commercial – Two Part Vertical Block



Everett



Seattle



Seattle

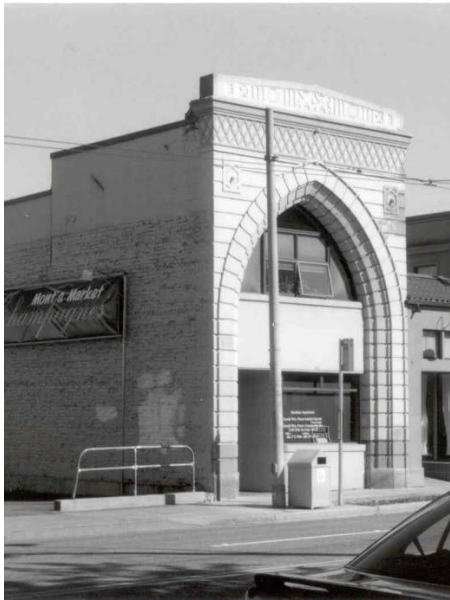


Olympia

ANATOMY OF A MAIN STREET BUILDING

Washington State Examples

Commercial – Vault



Seattle



Toppenish



Centralia



Starbuck



Walla Walla

ANATOMY OF A MAIN STREET BUILDING

Washington State Examples

Commercial – Vault



Pullman



Pomeroy



Snohomish



Walla Walla



Waitsburg

ANATOMY OF A MAIN STREET BUILDING

Washington State Examples

Commercial – Three Part Vertical Block

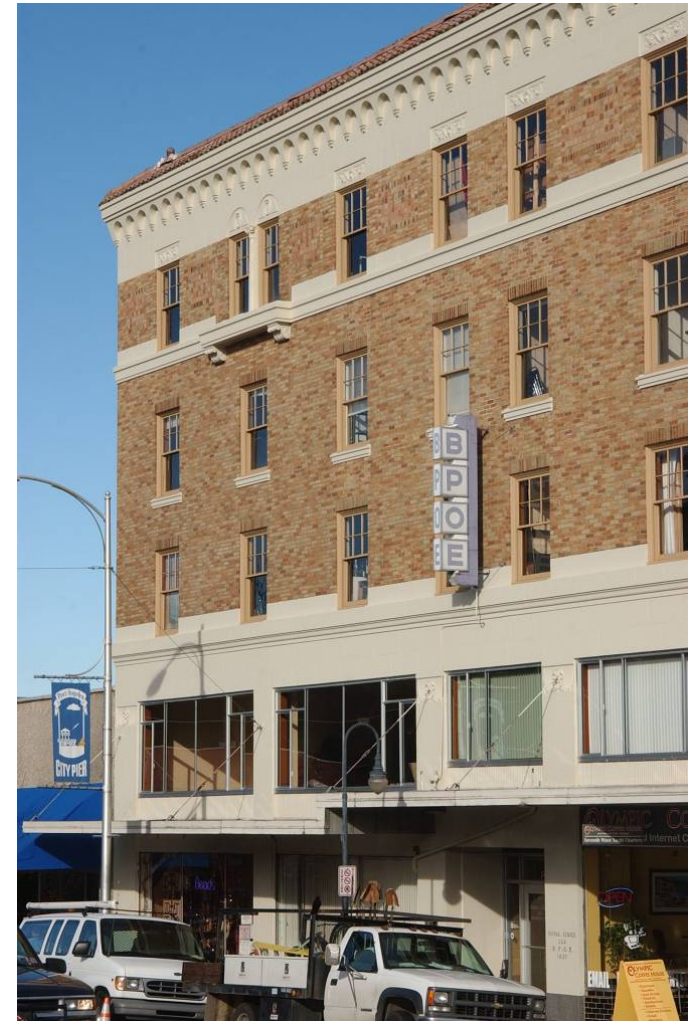


Seattle



Seattle

Seattle



Port Angeles



ANATOMY OF A MAIN STREET BUILDING

Washington State Examples

Commercial – Three Part Vertical Block



Walla Walla



Seattle



Seattle



Spokane



Vancouver

ANATOMY OF A MAIN STREET BUILDING

Washington State Examples

Commercial – Temple Front



Snohomish



Elma



Seattle



Ephrata



Vancouver



Colville

ANATOMY OF A MAIN STREET BUILDING

Washington State Examples

Commercial – Enframed Block



Hoquiam



Everett



Spokane



Longview



Olympia

ANATOMY OF A MAIN STREET BUILDING

Washington State Examples

Commercial – Central Block with Wings



Olympia



Wilbur



Seattle



Shelton

ANATOMY OF A MAIN STREET BUILDING

Washington State Examples

Commercial – Central Block with Wings



Seattle



Yakima



Renton

ANATOMY OF A MAIN STREET BUILDING

Washington State Examples

Commercial – Arcaded Block



Seattle



Olympia



Longview



Hood Canal



Clayton

ANATOMY OF A MAIN STREET BUILDING

Washington State Examples

Commercial – Arcaded Block



Wenatchee



Longview



Parkland



Colville



Aberdeen

ANATOMY OF A MAIN STREET BUILDING

Washington State Examples

Commercial – Flatiron



Seattle

Tacoma



Seattle



Chehalis



Seattle

ANATOMY OF A MAIN STREET BUILDING

Washington State Examples

Commercial – Strip Commercial



Lakewood



Vancouver



Lakewood



Shelton

ANATOMY OF A MAIN STREET BUILDING

Washington State Examples

Commercial – Mall



Spokane



Tacoma



Richland



Vancouver

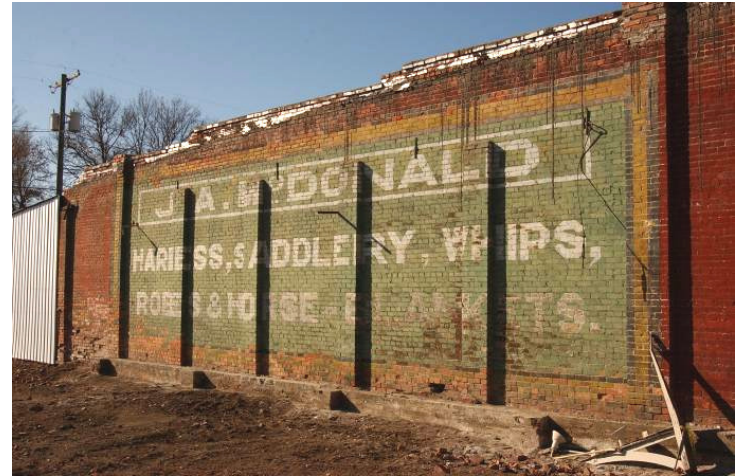
Building Details



ANATOMY OF A MAIN STREET BUILDING

Washington State Examples

Commercial – Details



ANATOMY OF A MAIN STREET BUILDING

Washington State Examples

Commercial – Storefronts



ANATOMY OF A MAIN STREET BUILDING

Washington State Examples

Commercial – Cornice



ANATOMY OF A MAIN STREET BUILDING

Washington State Examples

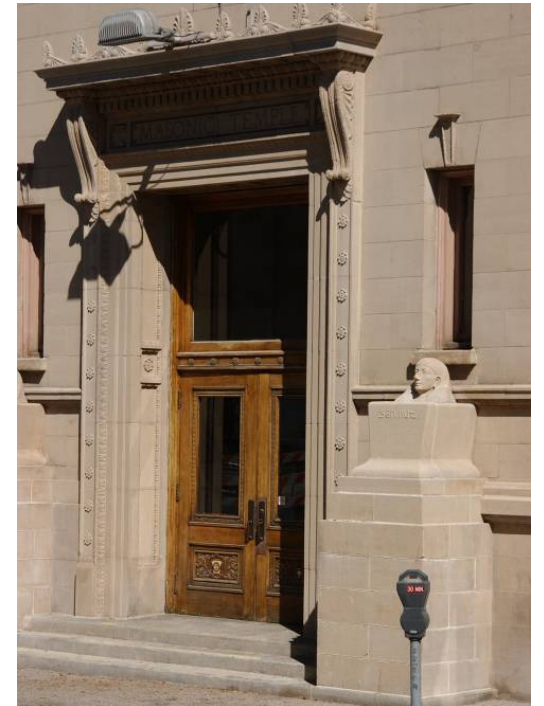
Commercial – Signage



ANATOMY OF A MAIN STREET BUILDING

Washington State Examples

Commercial – Doors



ANATOMY OF A MAIN STREET BUILDING

Washington State Examples

Commercial – Awnings



ANATOMY OF A MAIN STREET BUILDING

Washington State Examples

Commercial – Exterior Material



Carrera Glass



Poured Concrete



Brick



Concrete Block



Pressed Tin



Enameled Metal

ANATOMY OF A MAIN STREET BUILDING

Safeway Store - Statewide

Commercial – Context



Camas



Tacoma



Colville



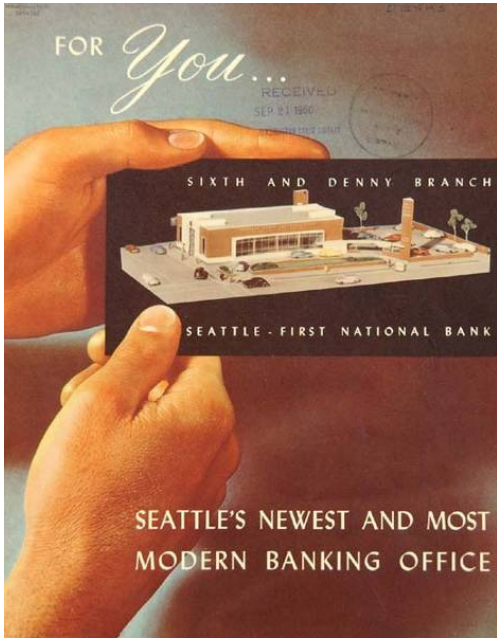
Yakima



Seattle

ANATOMY OF A MAIN STREET BUILDING

Seattle First National Bank - Statewide



Olympia



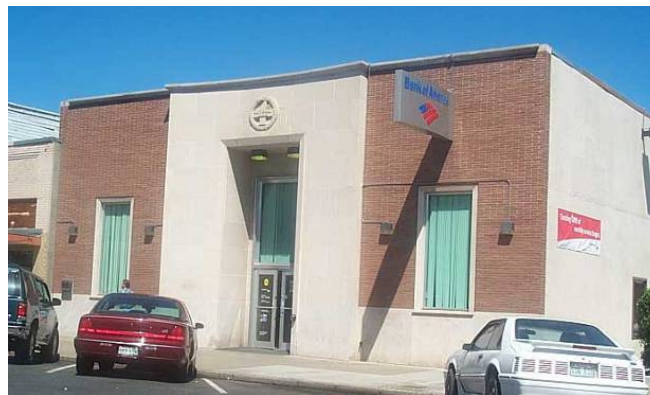
Seattle



Moses Lake



Vancouver



Toppenish



Bremerton

ANATOMY OF A MAIN STREET BUILDING



developed by

**Michael
Houser**

*State
Architectural
Historian*

Michael.houser@dahp.wa.gov
360-586-3076

