

ALUMINUM STORE FRONTS

Kawneer Architectural Products

Aluminum Wall Systems

Aluminum Entrances

Aluminum Store Fronts

Aluminum Sealair Windows

Wall Facings

Aluminum Canopies/Louvers



1960

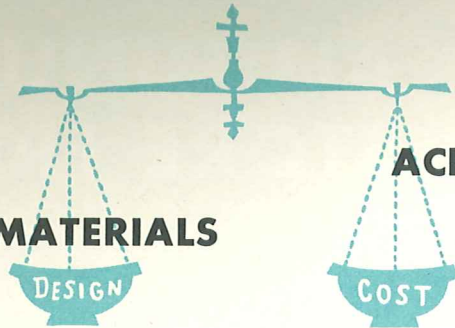
catalog

KAWNEER

KAWNEER STORE FRONTS

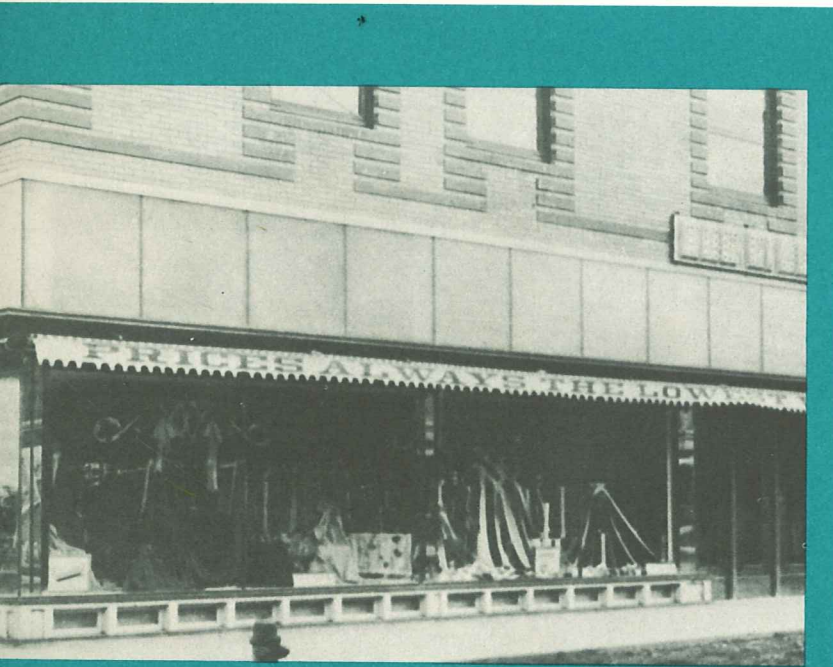
QUALITY

STORE FRONT MATERIALS



ACHIEVING

THE PERFECT BALANCE



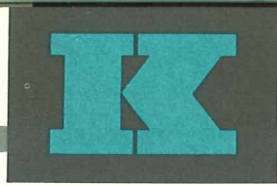
We have a rather uncompromising precedent set at Kawneer. When Mr. Francis J. Plym, architect and founder, formed our company, he told his men: "I shall not permit anything to leave this plant unless it reflects credit upon the company and upon you."

This philosophy applied when Mr. Frank Johnson of Holdredge, Nebraska purchased a Kawneer store front in 1906

and continues to be our philosophy today.



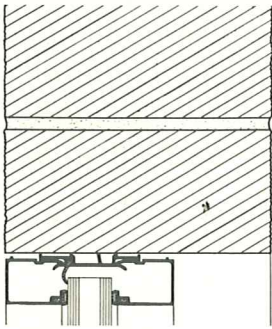
More than 2,500,000 building fronts have contributed to the development of the Kawneer Touch. Architecturally designed, absolutely engineered products, distributed by Approved Kawneer Installing Dealers guarantee client satisfaction.



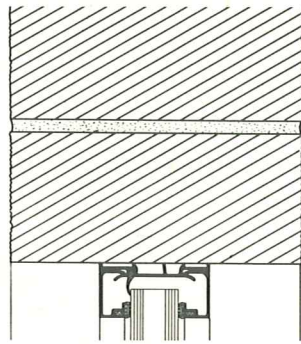
TYPICAL DETAILS

10-703

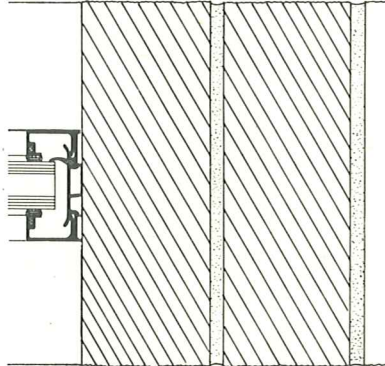
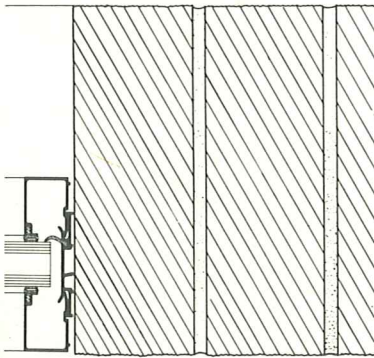
HEAD



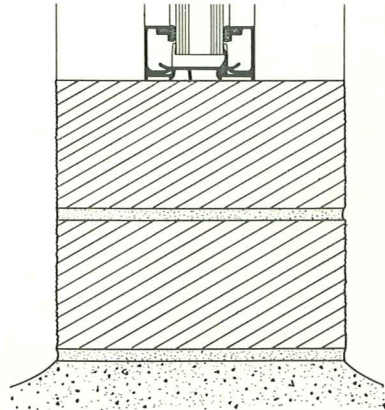
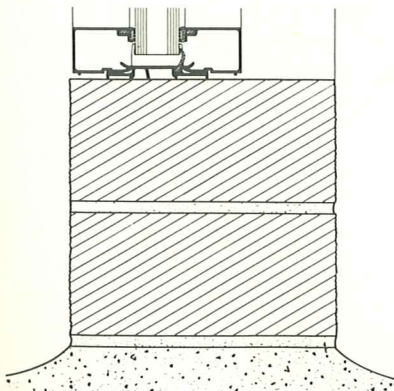
10-702



JAMB



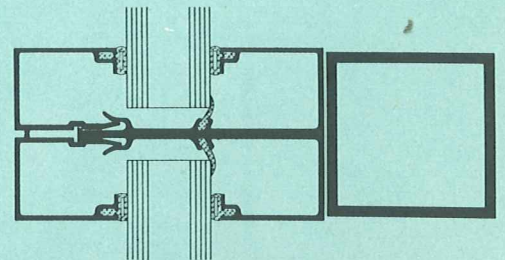
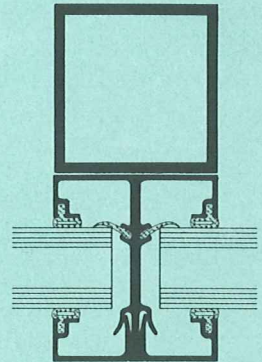
SILL



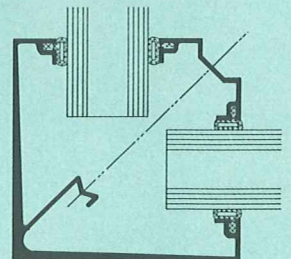
DESIGN FLEXIBILITY

Sash faces may be interchanged to provide a deep reveal on exterior or interior with a narrow reveal opposite. Division bars 12-301 and 12-302 utilize faces identical to the sash faces and may be interchanged to provide major or minor verticals or horizontals.

DIVISION BARS

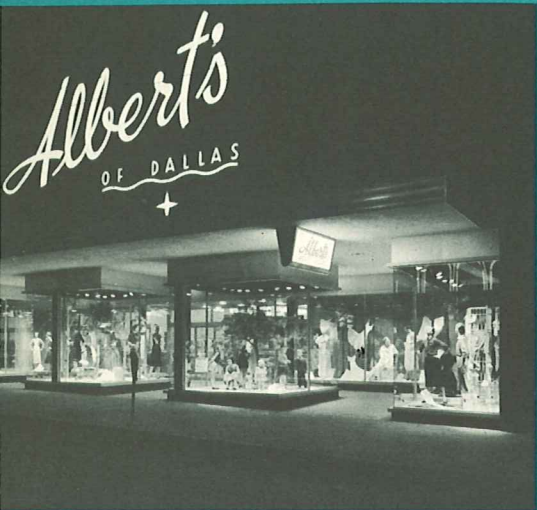


CORNER BARS



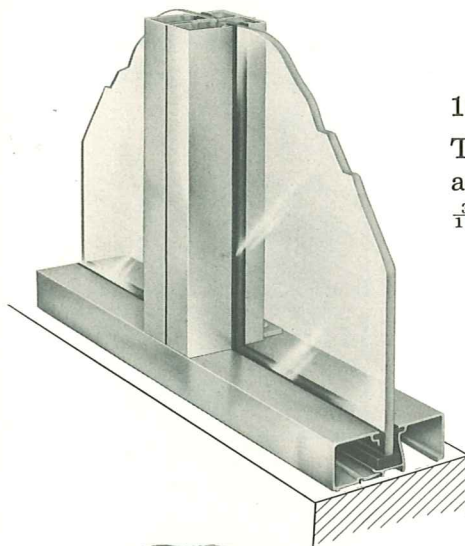
NOTE: For division and corner bars and aluminum stiffeners applicable to Double Glazed, Direct-On-Masonry Sash, see Group One pages 12 and 13.

DIRECT-ON-MASONRY SASH • SINGLE GLAZED



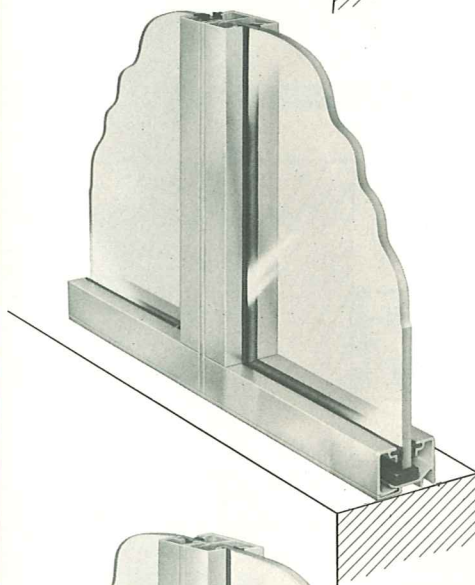
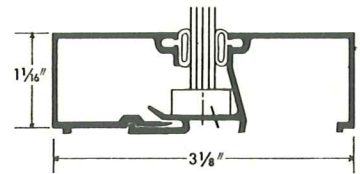
The newest of weathered glass holding members. The sash pictured here provides resiliency while preventing walking of glass.

New glazing simplicity and economy are possible with Kawneer's Double-Face Sash. Direct-on-masonry Double Face setting with Neoprene pre-weathered lock-in face gives you fast, economical glass setting with substantial labor cost savings.



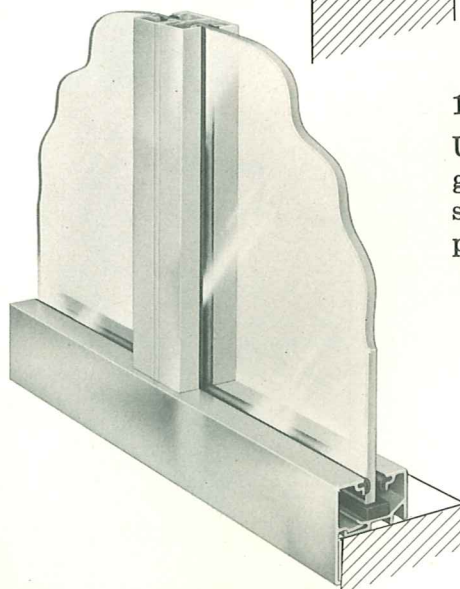
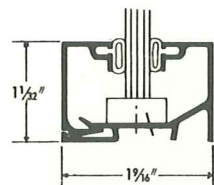
10-422

These double-face sashes will accept glass thicknesses from $\frac{3}{16}$ " to $\frac{9}{32}$ " without modification.



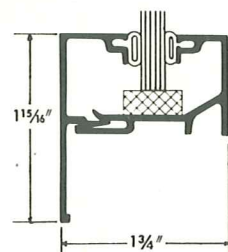
10-450

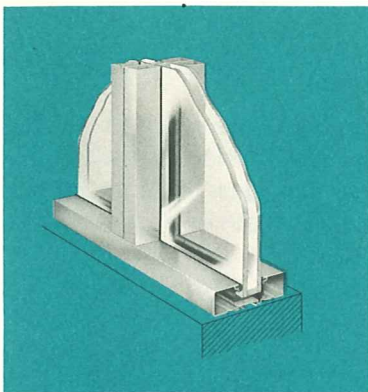
Adaptable without trim members to masonry sills and jambs. Pocket for neoprene weathering or caulking is provided.



10-426

Uni-Sash clean lines of rectangular design with combination sash and jamb section achieve a projected appearance.





10-703



DIRECT-ON-MASONRY SASH • DOUBLE GLAZED

Cushioned lock-in glass holding members with narrow or bold contours.

neoprene weathering

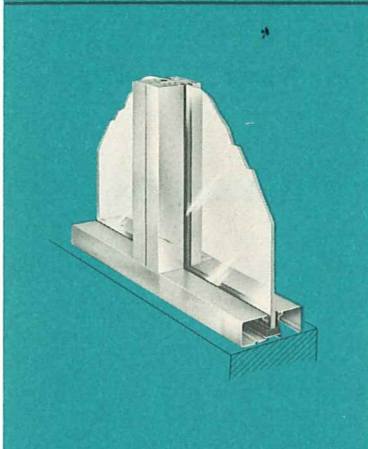
Continuous bulb weathering on both sides of sash plus neoprene weather baffle in base of sash prevents infiltration of extreme temperature.

10-702



division and corner bars

The Kawneer double glazed bar line was designed to complement 10-702 and 10-703 sash and features the same design and functional elements.



10-422



DIRECT-ON-MASONRY SASH • SINGLE GLAZED

Bold or narrow face sash suitable for use with or without trim members, and one uni-sash type with its trim member an integral part provide extreme versatility.

10-450



neoprene weathering

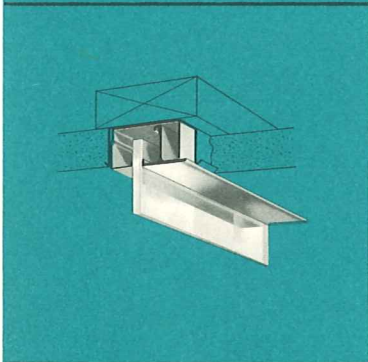
The resilient sealing qualities and durability of neoprene are utilized to assure a quality glass setting for years to come.

10-426

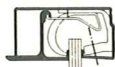


division and corner bars

To complete this family of glazing members, a full line of mullion bars with identical reveals is immediately available.



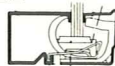
10-121



FLUSH GLAZING AND DEEP REVEAL SASH

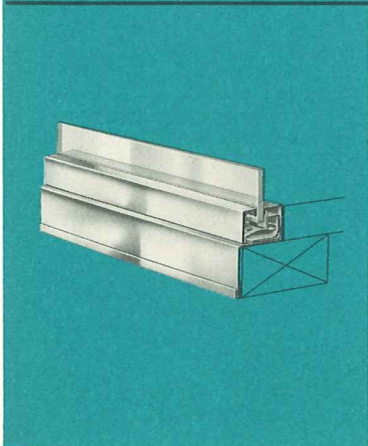
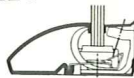
Flush glazing at jambs and head facilitates continuance of interior/exterior wall treatment in the same plane without breaking sight line.

10-122



Square face or bullnose surround for plate glass openings, compatible at sill with recessed sash to provide a pleasing effect.

10-124



10-120



SELF-SUPPORTING SASH

Resiliency is built into these rolled sash assemblies. These extremely popular members of the line are immediately available from your local Approved Kawneer Installing Dealer.

color

Colored porcelain on 10-150 sash (or bulkhead sash) and its companion trim members offer opportunity for show window dramatization.

10-150 10-350



companion trim members

A large selection of sill, head and jamb covers, plus keyed-alike stock fascia moldings to create a completely integrated store front from sidewalk to coping.

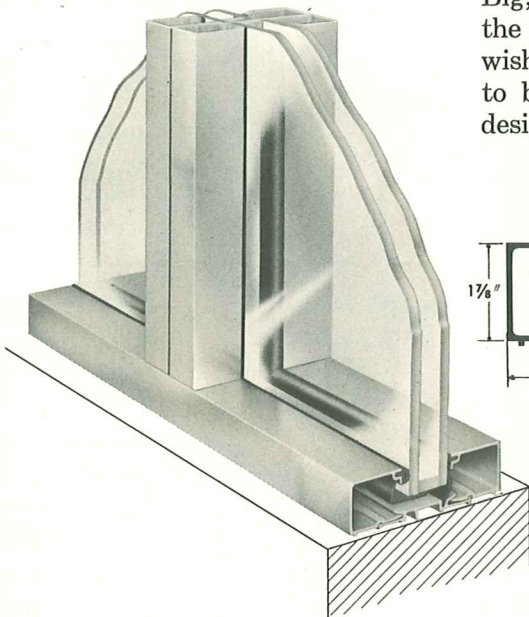
KAWNEER

DIRECT-ON-MASONRY SASH • DOUBLE GLAZED



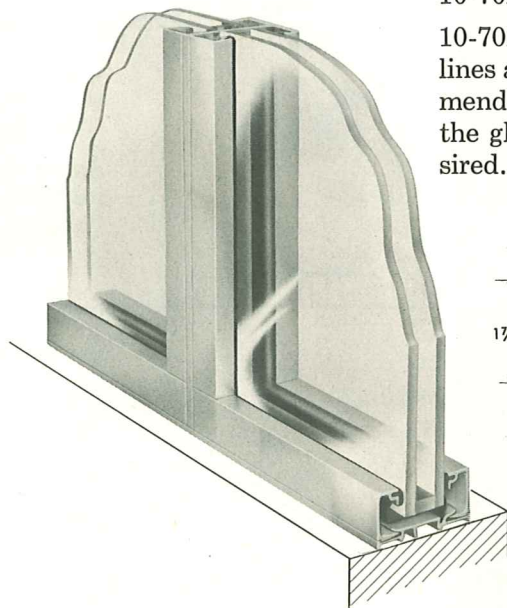
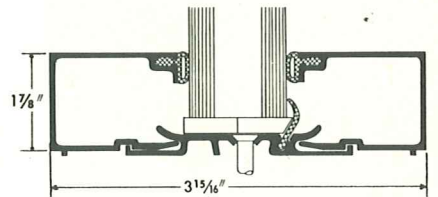
For double glazing requirements, Kawneer offers a fully weathered sash and bar system which provides resiliency yet prevents glass "walking" through use of neoprene weathering and setting blocks.

The Kawneer Double Glazing System features linear integrity and compatibly intermixed members. It may be used without trim members since a base pocket is provided for caulking or neoprene weathering.



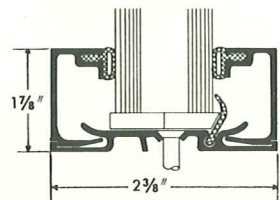
10-703

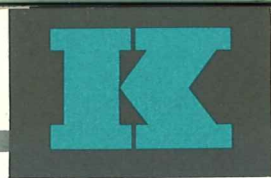
Big, bold lines make 10-703 Sash the ideal selection when you wish the glass holding member to be an obvious part of your design.



10-702

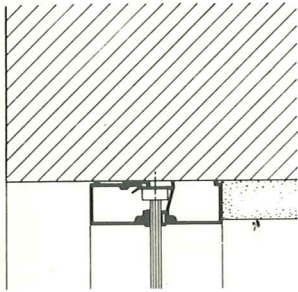
10-702 utilizes the same basic lines as the 10-703 and is recommended when less emphasis of the glass holding member is desired.



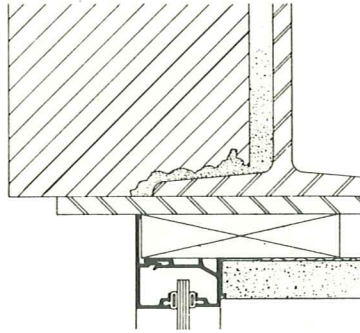


TYPICAL DETAILS

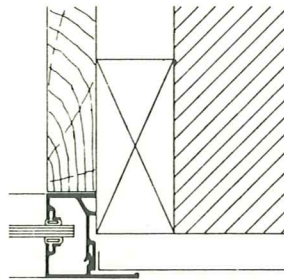
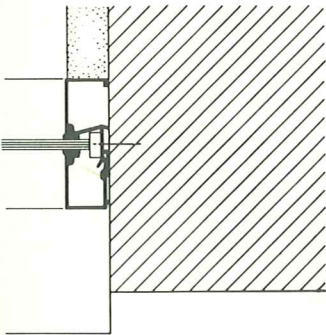
10-422
HEAD



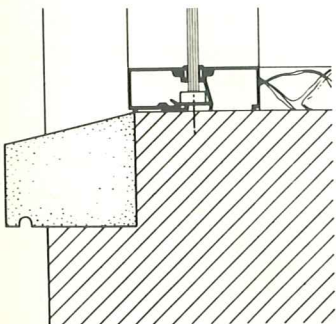
10-450



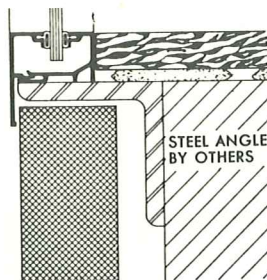
JAMB



SILL



10-426

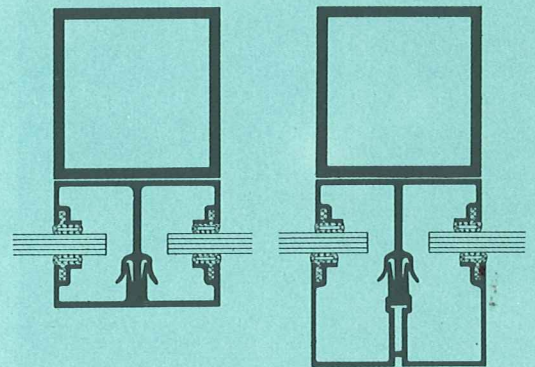


DESIGN FLEXIBILITY

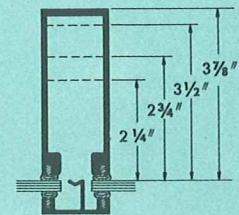
In addition to the flexibility offered by the variety of shapes shown, sash faces may be interchanged to provide a deep reveal on exterior or interior and a narrow reveal opposite.

Mullion bars 12-113 and 12-114 utilize faces identical to the sash faces and may be interchanged to provide major or minor verticals or horizontals.

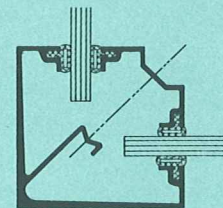
DIVISION BARS



ALUMINUM STIFFENERS

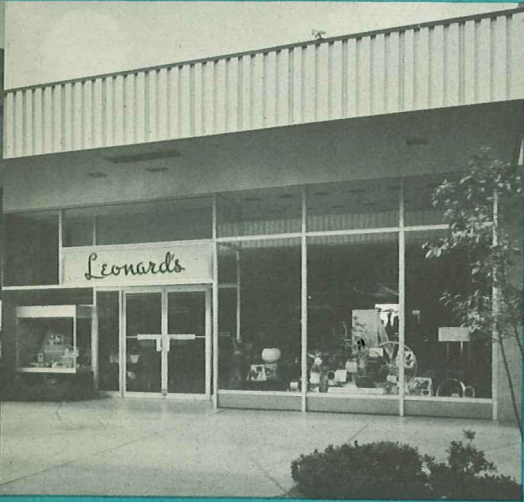


CORNER BARS

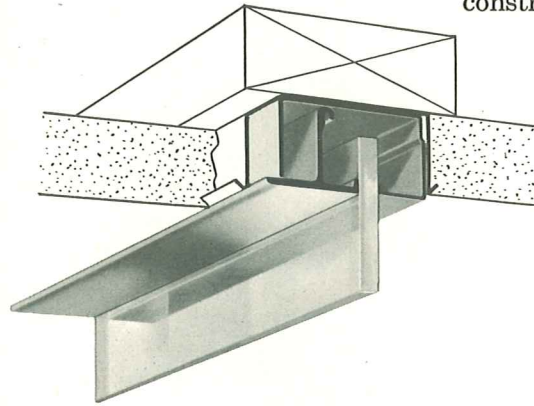


NOTE: For division and corner bars and aluminum stiffeners applicable to Single Glazed, Direct-On-Masonry Sash, see Group Two pages 12 and 13.

FLUSH GLAZING AND DEEP REVEAL SASH

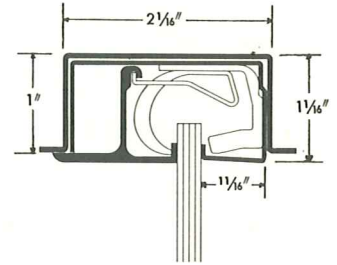


An example of versatility — 10-121 flush glazed sash used in combination with any Kawneer sash. Note continuity of soffit and jamb treatments made possible by use of flush glazing.



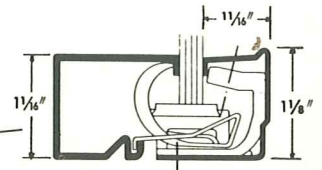
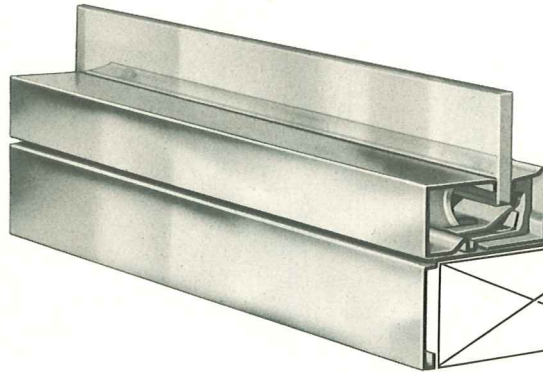
10-121

Recessed glazing provides maximum visibility and simplicity of construction.

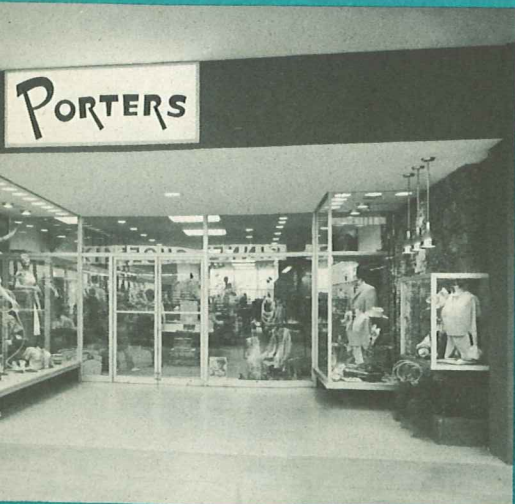


10-122

Deep reveal square faced sash lends dramatic interest to window framing.

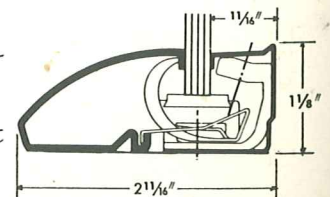
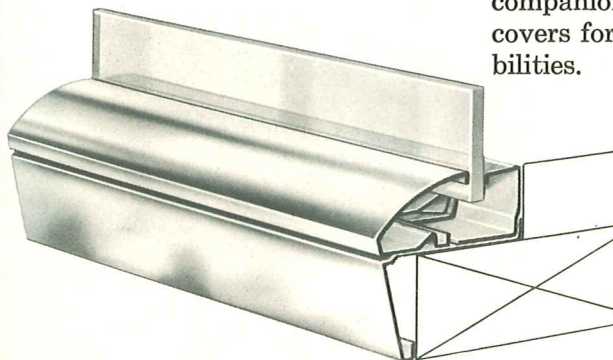


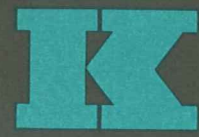
When accent of window framing is desirable 10-122 or 10-124 deep reveal sash carries out massive detail with clean-lined simplicity.



10-124

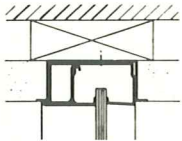
Deep reveal sash with gracefully curved face blends with companion sill, head and jamb covers for striking design possibilities.





TYPICAL DETAILS

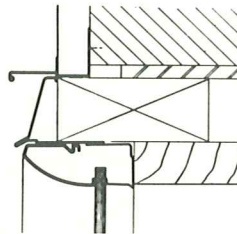
10-121
HEAD



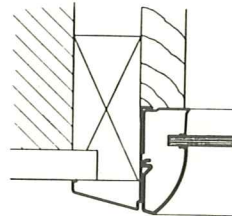
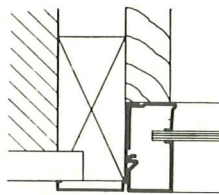
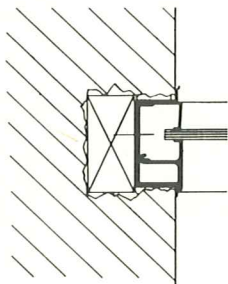
10-122



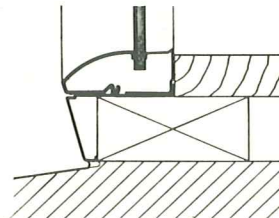
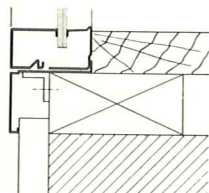
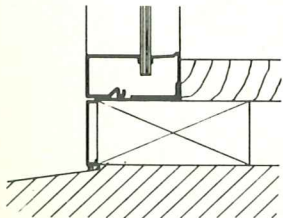
10-124



JAMB



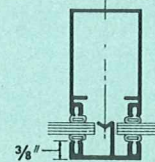
SILL



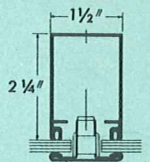
DESIGN FLEXIBILITY

Kawneer enables you to obtain distinctiveness with a variety of stock sash and moldings from which to choose.

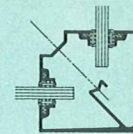
DIVISION BARS
EXTRUDED FACE



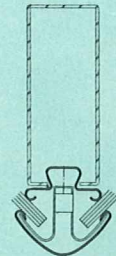
ROLLED FACE



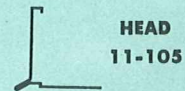
CORNER BARS



STEEL STIFFENERS

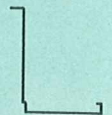


COMPANION TRIM MEMBERS

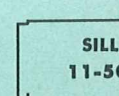


HEAD
11-105

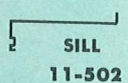
JAMB
11-505



SILL
11-505



SILL
11-502



SELF-SUPPORTING SASH



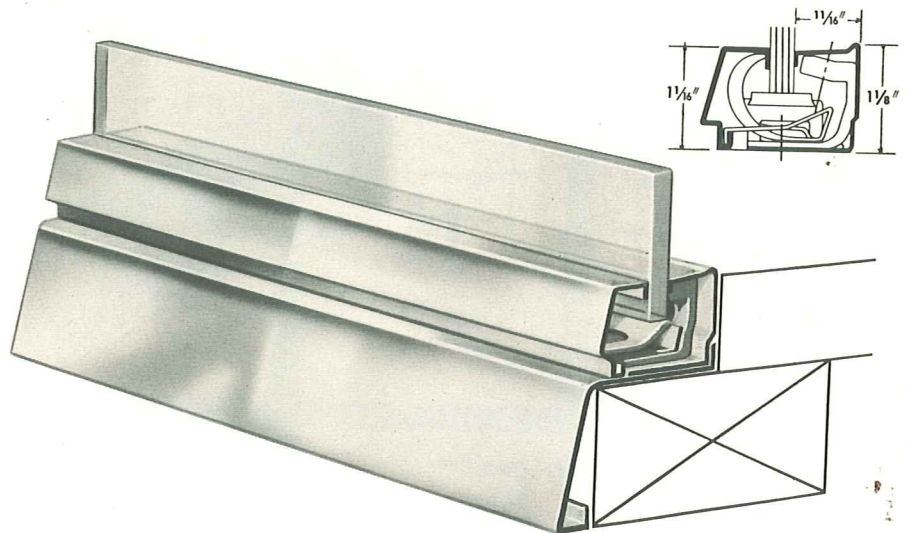
For new construction or modernization, Kawneer resilient sashes are stocked by Kawneer Approved Installing Dealers.

All of these attractive aluminum members are provided with the highly durable alumilite aluminum finish.



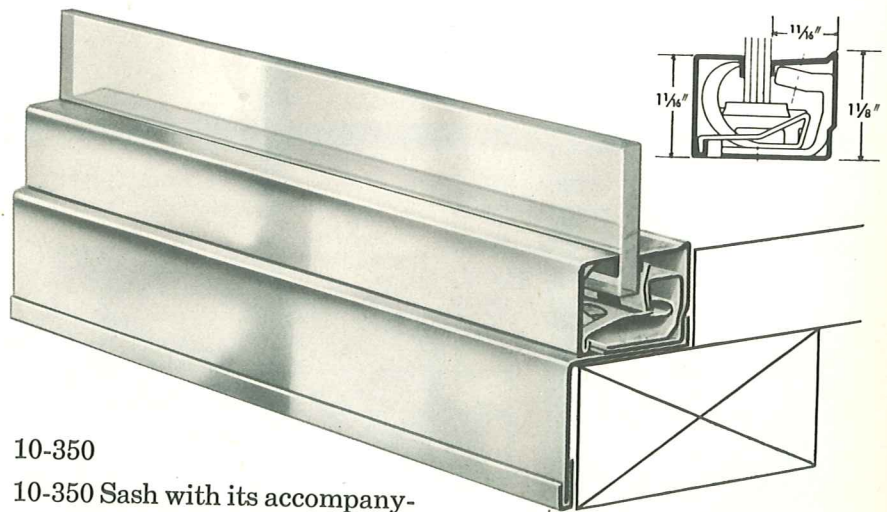
10-120

10-120 Sash with 11-503 Sill provides a beveled window framing effect.



10-150

This narrow reveal square faced sash offers a resilient glass setting at lower cost. Also available in your choice of three porcelain colors.

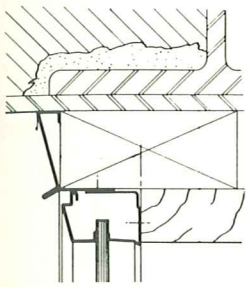


10-350

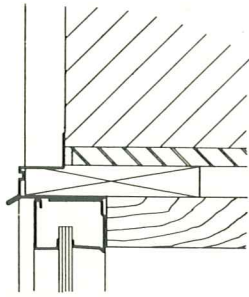
10-350 Sash with its accompanying head, jamb and sill cover members carries the same lines as 10-150 shown above.

TYPICAL DETAILS

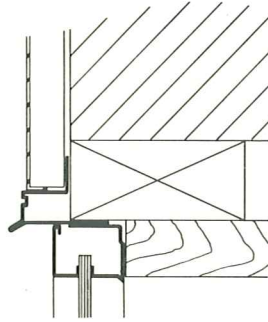
10-120
HEAD



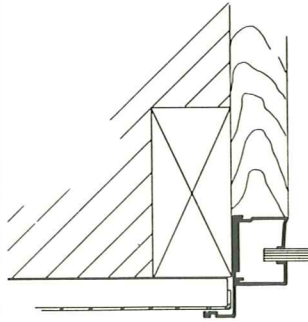
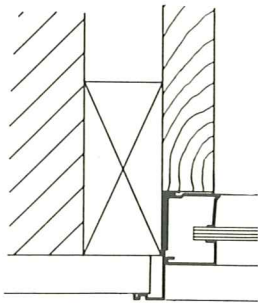
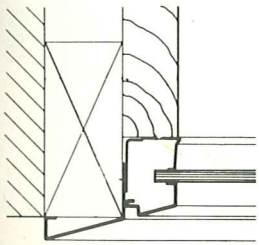
10-150



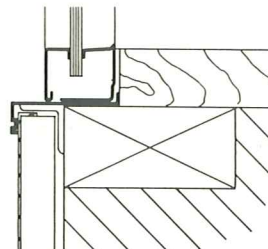
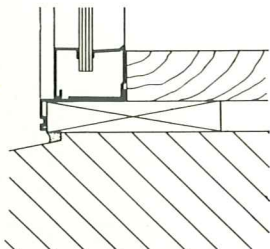
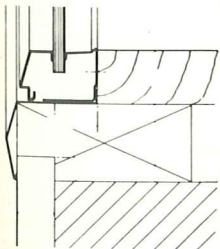
10-350



JAMB



SILL



DESIGN FLEXIBILITY

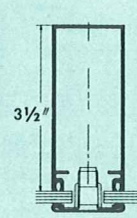
Use of the sashes shown together with the choices of trim, makes possible distinctive show window styling at minimum cost.

DIVISION BARS

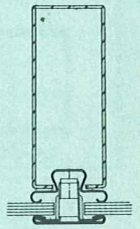
EXTRUDED FACE



ROLLED FACE



STEEL STIFFENER



COMPANION TRIM MEMBERS FOR SASH 10-120

HEAD



11-106 11-101 11-107 11-102 11-103

JAMB



11-301 11-504 11-302

SILL



11-503 11-508 11-507

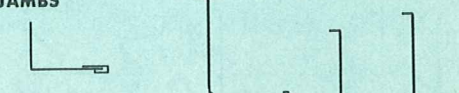
FOR SASH 10-150 and 10-350

HEAD



*11-105 11-100 11-502

JAMBS



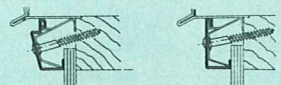
11-300 11-505 11-501 11-502

SILL



11-500 *11-105 11-502

HALF SASH



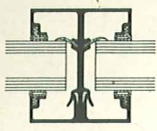
10-600 10-601

*AVAILABLE IN PORCELAIN COLORS

GROUP ONE

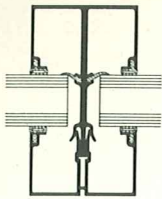
DIVISION BARS

VERTICAL AND HORIZONTAL

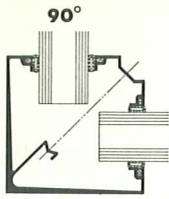


12-301

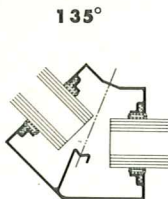
CORNER BARS



12-302



12-706



12-707



12-708

ALUMINUM STIFFENERS FOR GROUPS ONE AND TWO



24-533



24-534



24-535



24-536

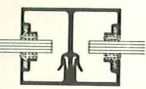


24-537

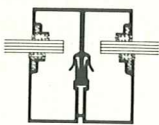
GROUP TWO

DIVISION BARS

VERTICAL AND HORIZONTAL

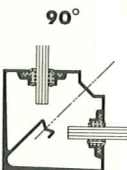


12-113

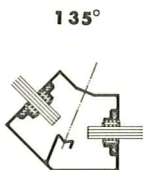


12-114

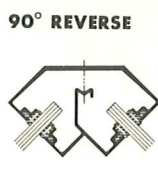
CORNER BARS



12-506



12-507



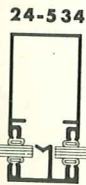
12-508

GROUP THREE

DIVISION BARS

WITH EXTRUDED FACE

24-492



24-534



24-535



24-536



24-537

WITH ROLLED FACE 24-411



24-489



24-490

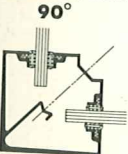


24-491

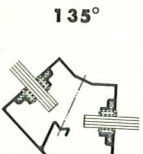


24-493

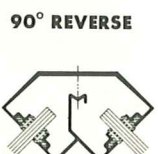
CORNER BARS



12-506



12-507



12-508



90° 12-502



135° 12-503



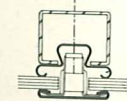
12-504

STEEL STIFFENERS

STEEL STIFFENER

(SHOWN WITH ROLLED FACE

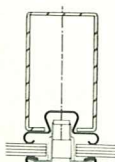
12-100)



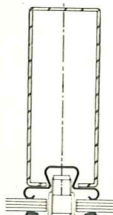
24-434



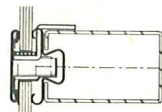
24-435



24-436



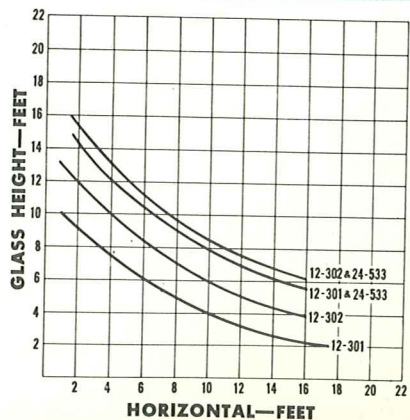
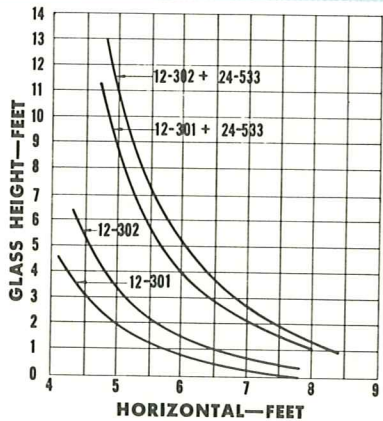
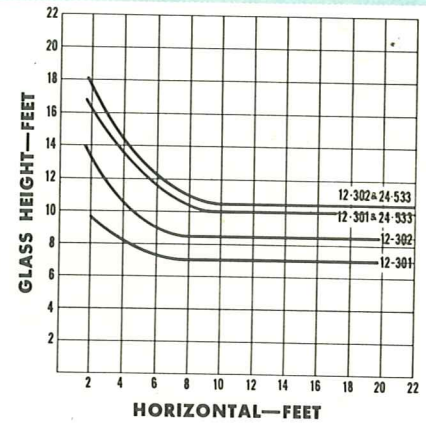
24-437

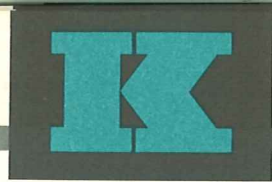


USED VERTICALLY OR HORIZONTALLY

WIND LOAD CHARTS

Wind load charts indicate allowable height/width relationships.





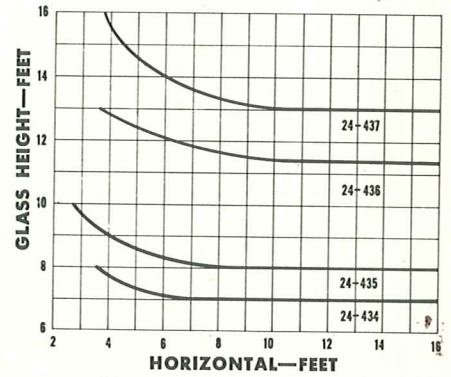
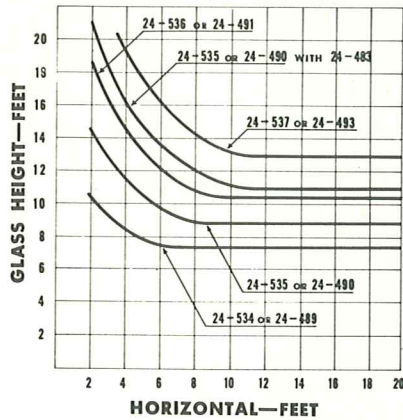
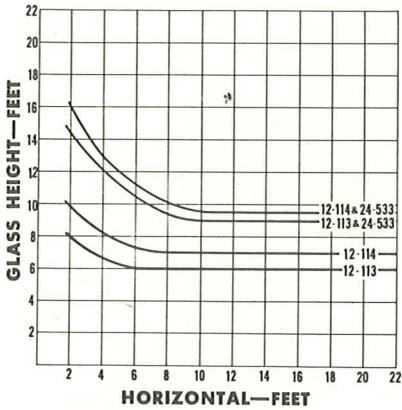
Horizontal Limitations are calculated with setting blocks located at the quarter points as recommended by the glass manufacturers.

Note that horizontal division bars add eccentric and bending stresses to the verticals reducing maxi-

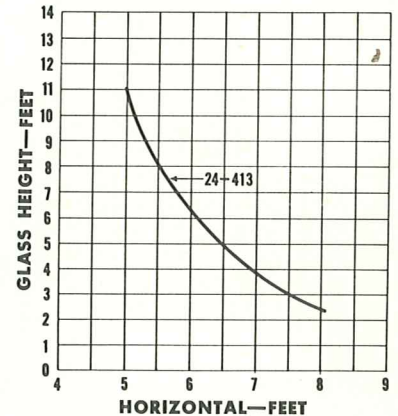
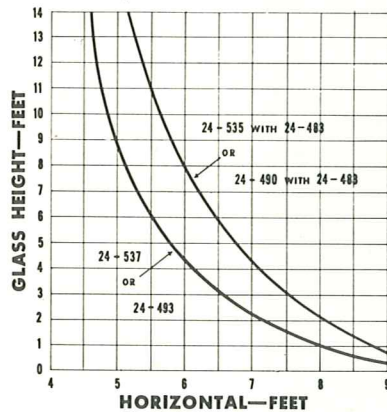
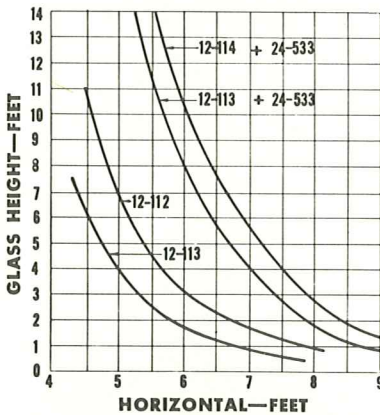
imum heights shown in charts without horizontals.

When Group 3 division bars are used and horizontal bars are required, please note that specific stiffeners recommended in Horizontal Limitation Charts should be used except for small lite glazing.

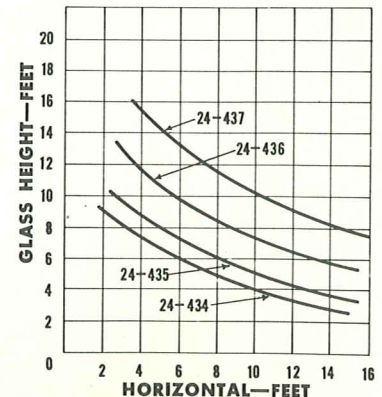
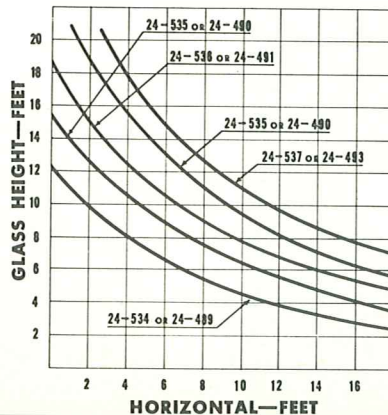
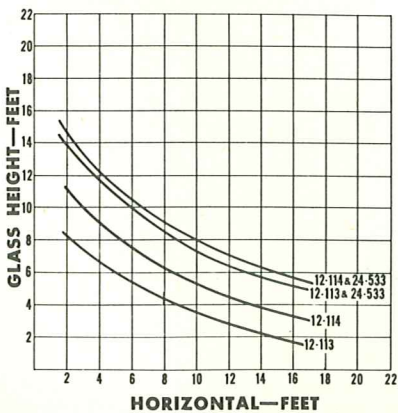
LIMITATIONS FOR HORIZONTAL BARS



VERTICAL LIMITATIONS (without horizontals)



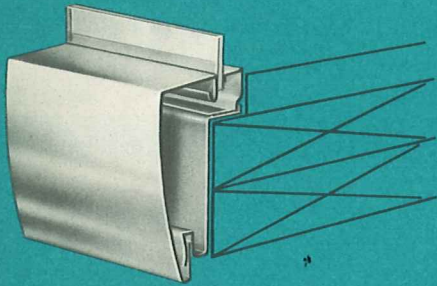
VERTICAL LIMITATIONS (with horizontals)



KAWNEER

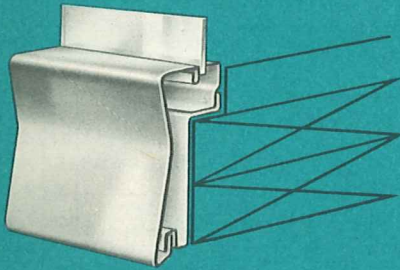
BULKHEAD SASH

10-901

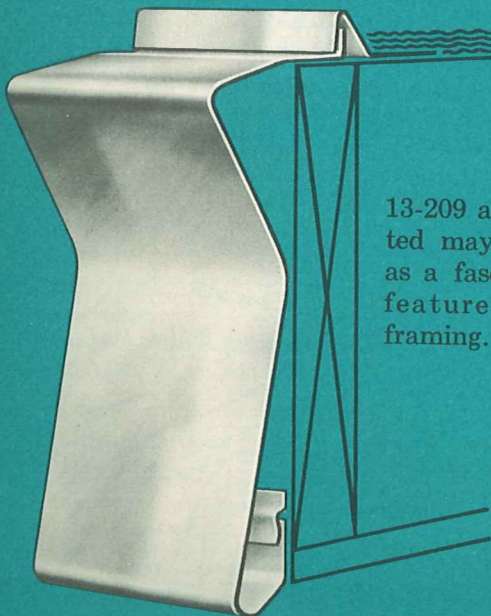


When massive framing is desired to dramatize show windows, bulkhead sash 10-901 or 10-900 are extremely effective. The unusually adaptable face members may be used as canopy fascias or facing perimeters.

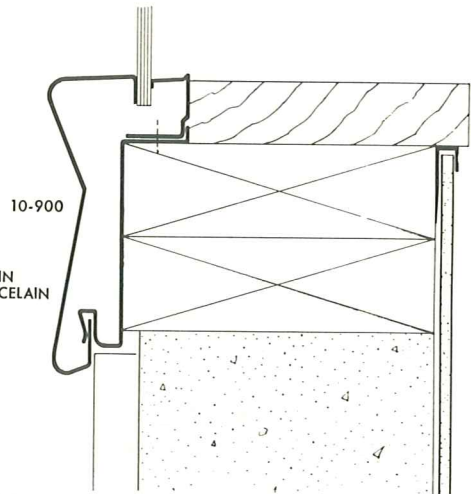
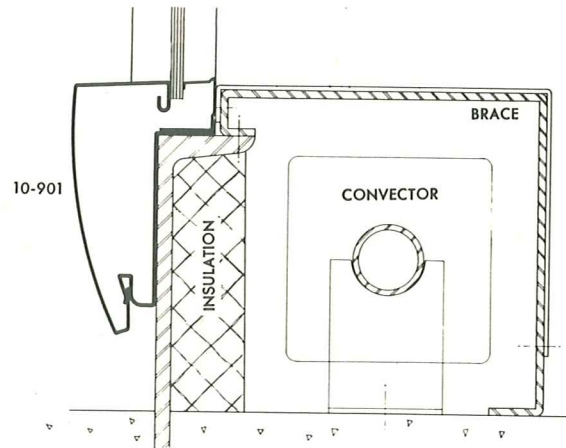
10-900



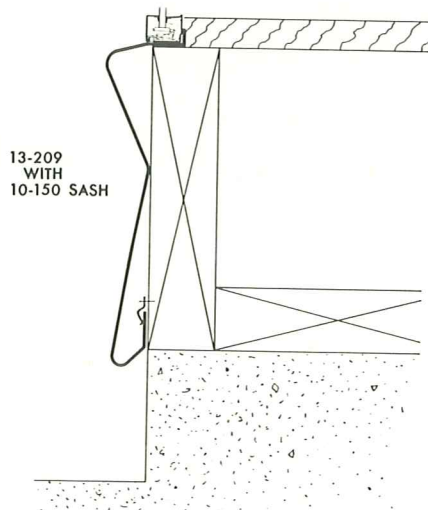
13-209

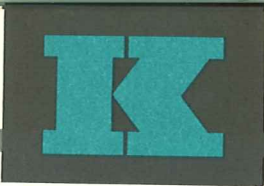


13-209 as illustrated may be used as a fascia or to feature window framing.



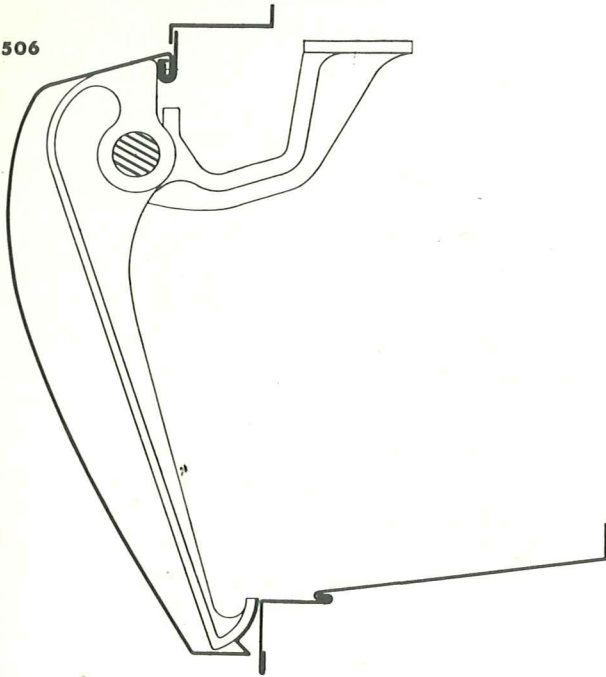
AVAILABLE IN THREE PORCELAIN COLORS



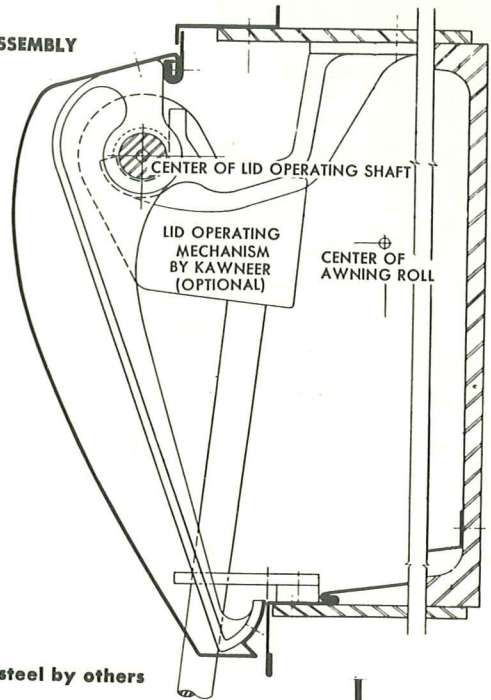


CONCEALED AWNING BOX

23-506



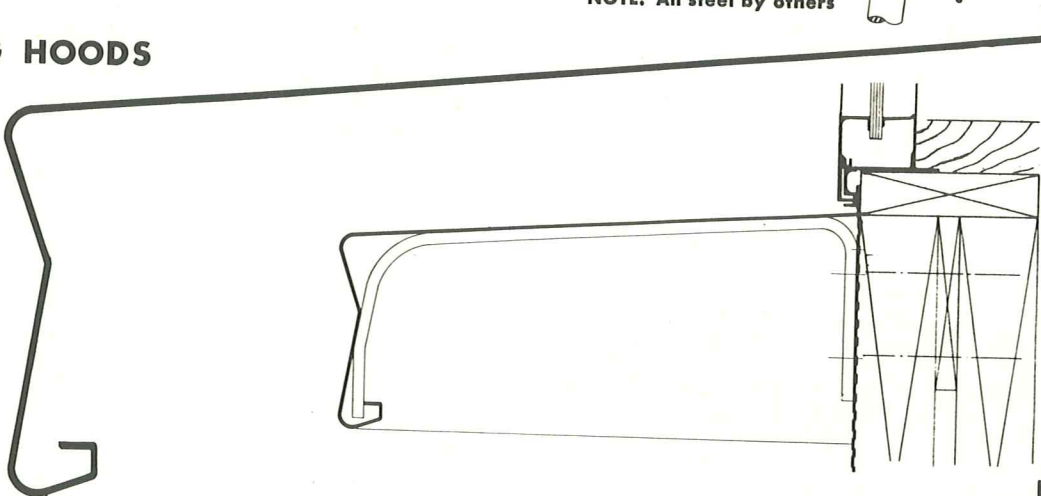
23-508 LID ASSEMBLY



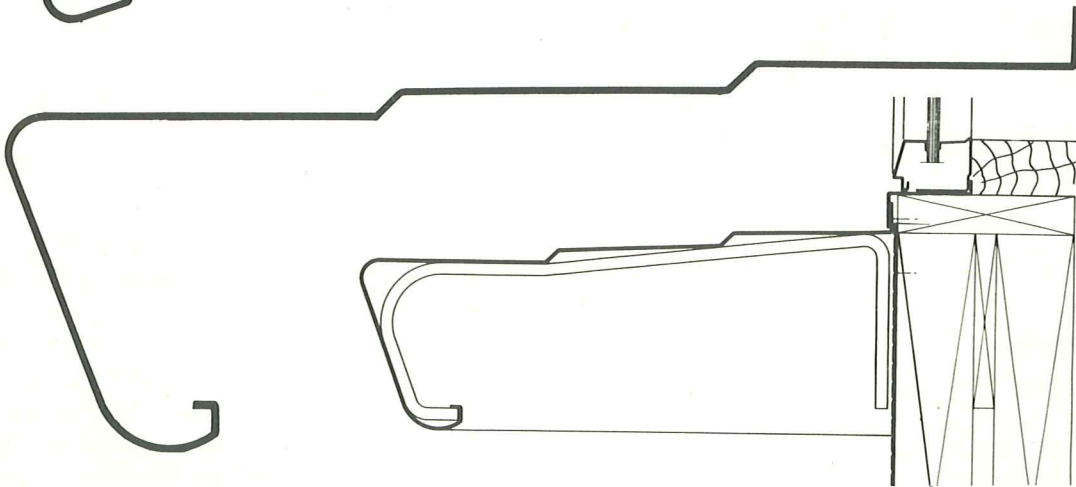
NOTE: All steel by others

AWNING HOODS

23-503



23-501



SPECIFICATIONS

1. WORK REQUIRED:

Store front material shall be as manufactured by Kawneer Company, Niles, Michigan; Richmond, California; and Toronto, Ontario, Canada.

The contractor shall furnish all necessary material, labor, and equipment for the complete installation of the following:

Store front sash, jambs, sills, corner and division bars, bulkheads, awning hoods, trim moldings, and poster or show case doors.

2. WORK NOT INCLUDED:

Entrance doors and frames will be done under "Entrance" Section of the specifications.

Glass and glazing will be done under "Glass and Glazing" Section of the specifications.

Aluminum facing materials (Zourite and/or Color Wall) will be done under "Facing" Section of the specifications.

Wood framing, painting, and structural steel will be done under their respective sections of the specifications.

3. MATERIALS:

Store front sections and poster or show case doors shall be formed of aluminum with the proper alloy and temper consistent with the forming operations. These sections shall be of aluminum alloy 5005 or aluminum alloy 6063-T5 (A.S.T.M. Specifications B221-54T GS10A-T5).

Reinforcing for division bar shall be rolled of forming quality steel and painted with a corrosion inhibiting paint.

All screws, miscellaneous fastening devices and internal components shall be of stainless steel, aluminum or other plated or corrosion resistant materials of sufficient strength to perform the functions for which they are used.

4. WORKMANSHIP:

Sash shall provide a fully resilient setting for the glass and be of such construction as to provide not less than $\frac{1}{2}$ " grip on the glass.

Division and corner bar assemblies shall be fully resilient and shall provide not less than $\frac{1}{2}$ " grip on

the glass. They also shall be designed to prevent the edge of the glass from coming in contact with the screws and fastening devices. Bar assemblies shall include stiffeners, anchors and screws as necessary. Bar heights shall be governed by glass limits as indicated by glass manufacturers.

All sections shall be formed true to details with clean, straight, sharply defined profiles, smooth surfaces of uniform texture, and free from defects impairing strength or durability.

5. FINISH:

All exposed portions of aluminum store front moldings shall be buffed to a mirror-like finish, free from die markings or scratches and shall be given an anodic oxide treatment in accordance with Alcoa Specification "Alumilite 204 A1 R1."

6. ERECTION:

All items under this heading shall be set in their correct locations as shown in the details and shall be level, plumb, square, and at their proper elevation and in alignment with all work.

All joints between the metal and masonry shall be tightly caulked in order to secure a watertight job. All metal shall be screwed to backing, or to plugs in masonry or anchor straps as required.

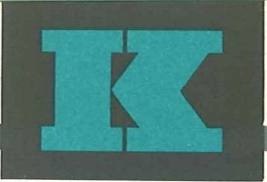
Where moldings are joined at corners, they shall be accurately cut and neatly fitted to result in a tightly closed miter or the joint shall be covered with a (lug or screw applied) molding cap, mitered and welded at the factory.

After erection, the General Contractor shall adequately protect all exposed portions of the store front metal work from damage by grinding and polishing machines, plaster, lime, acid, cement or other harmful compounds.

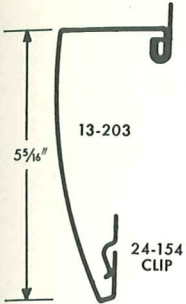
7. CLEANING:

The General Contractor shall be responsible for removal of protective materials and cleaning of the aluminum.

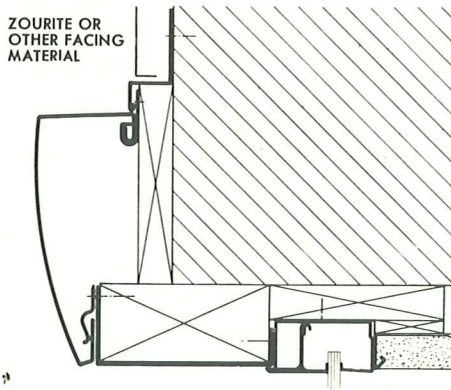
All aluminum shall be thoroughly cleaned with plain water or a petroleum product such as white gasoline, kerosene or distillate. No abrasive agents shall be used. The General Contractor shall be held responsible for damages resulting from the use of other cleaning materials.



FASCIA

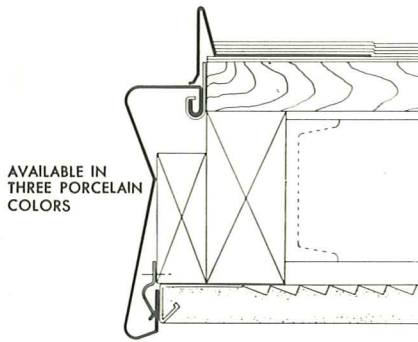
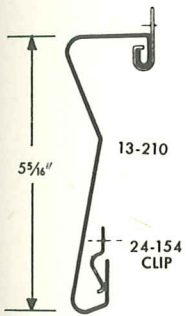
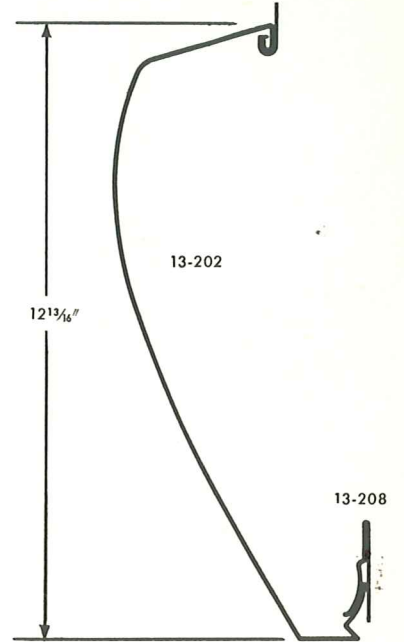


JAMB OR CANOPY TRIM

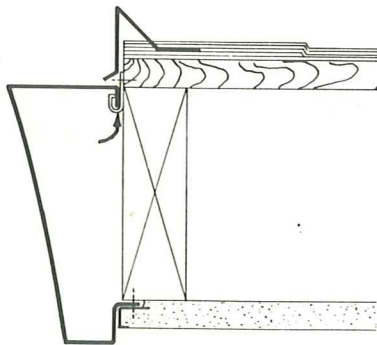
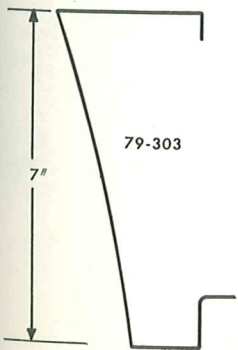


TRIM—HEAD JAMB

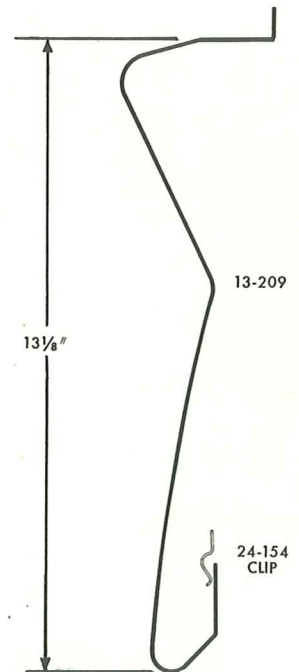
ALTERNATE FASCIA



CANOPY FASCIA

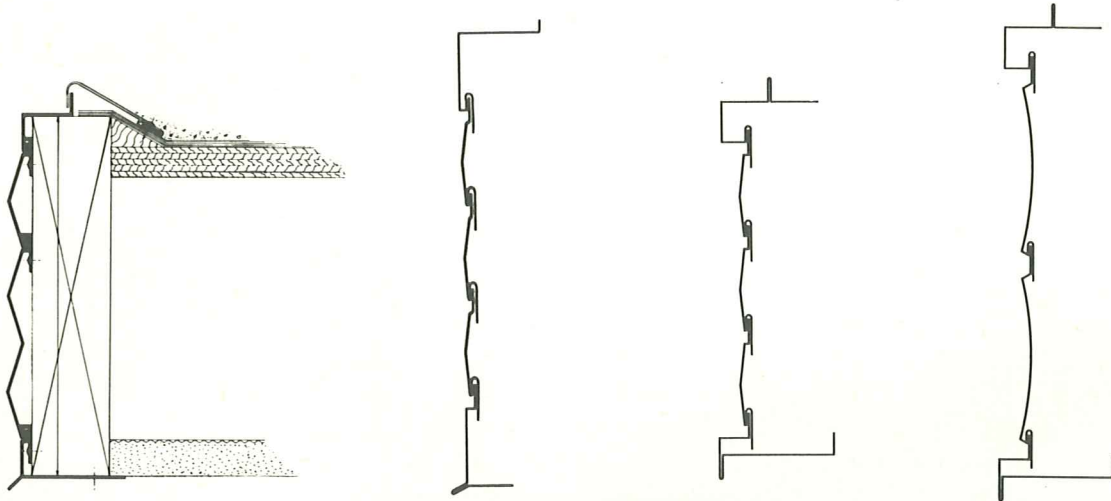
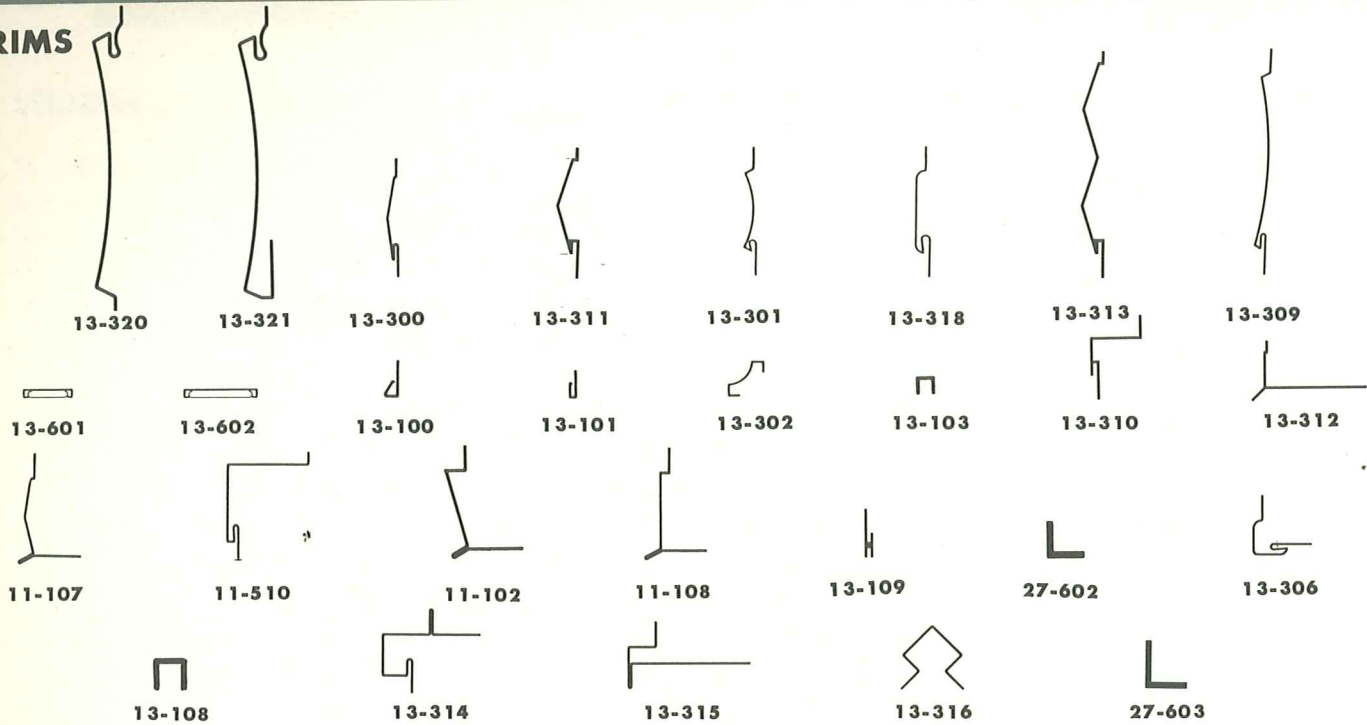


CANOPY FASCIA



KAWNEER

TRIMS



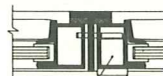
SHOW CASES



23-200

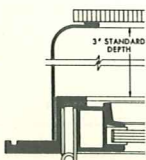


23-201

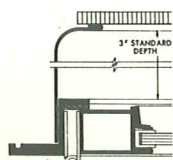


23-206

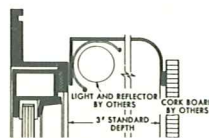
POSTER CASES



23-212 DOUBLE DOORS
23-213 DOUBLE DOORS

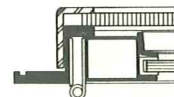


23-214 DOUBLE DOORS
23-215 DOUBLE DOORS

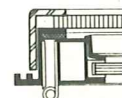


23-216

BULLETIN BOARDS



23-219



23-220

CANOPIES/LOUVERS



Many buildings have special problems with the sun and weather because of orientation and other factors.

Also, many new buildings using curtain wall (see $\frac{3a}{Ka}$) design have special problems because of large expanses of glass. See the Kawneer representative to discuss all Sun Control requirements. See Catalog $\frac{19e}{Ka}$.

WALL FACINGS



KAWNEER WALL FACINGS—

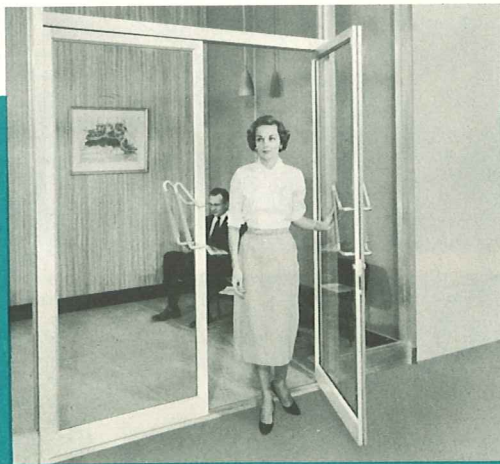
Zourite — the all-purpose, lightweight aluminum facing material.

Color Wall — porcelain on steel veneer panels in wide selection of colors for exterior or interior remodeling and new construction.

See or contact your local Approved Kawneer Installing Dealer. See Catalog $\frac{6d}{Ka}$.

ENTRANCES

STOCK ENTRANCES WITH CONCEALED OVERHEAD CLOSER



It is now possible to specify the complete entrance — all-aluminum, Narrow Line door, frame and concealed overhead closer — by Kawneer and installed by your Approved Kawneer Installing Dealer. This assures you of undivided responsibility. See Catalog $\frac{16a}{Kaw}$.

AUTOMATIC ENTRANCE



A totally new concept in automatic entrance design, operation and installation. For the first time you can specify an automatic entrance with an electric operating mechanism engineered for use with the door it operates. See Catalog $\frac{16a}{Kaw}$.

ALUMINUM STORE FRONTS

DISTRICT OFFICES

*Atlanta, Georgia
530 Permalume Place, N.W.
Sycamore 4-9501

*Boston, Massachusetts
255 Corporation Way,
Medford, Mass.
Export 5-7070

***Brooklyn 6, New York
345 Ten Eyck Street
Hyacinth 7-4880

Chicago 30, Illinois
4532 North Elston Avenue
Spring 7-6968

Cincinnati 36, Ohio
7565 Kenwood Road
Rm. 107

Kenwood Center Bldg.
Tweed 1-8122

*Combined Sales Office and Warehouse

*Cleveland 11, Ohio
4791 W. 105th Street
Orchard 1-1158

*Dallas 35, Texas
8615 Directors Row
Fleetwood 7-4541

Kansas City 15, Missouri
No. 20 On-the-Mall
Prairie Village
Endicott 2-2318

*Los Angeles 22, California
3000 Supply Avenue
Raymond 3-9171

***Miami 47, Florida
7651 N.W. 25th Avenue
Oxford 1-9131

New York 36, New York
Rm. 2346, 11 W. 42nd St.
Longacre 4-8476

***Warehouse Only

Philadelphia, Pennsylvania
1020 Main St., Darby, Pa.
Ludlow 3-8600

**Richmond, California
600 Parr Blvd.
Beacon 2-1821

Seattle 99, Washington
420 First Avenue, West
Atwater 4-0363

**Toronto, Ontario, Canada
1460 Don Mills Rd.,
Don Mills, Ont.
Hickory 4-1101

**Niles, Michigan:
Cynthiana, Kentucky

**Combined Sales Office and Factory

Serving Architects and Industry since 1906

Other Architectural Products

For other architectural products,
see these Kawneer catalogs
in Sweet's Architectural File:

Aluminum Wall Systems

Section 3a
Ka

Wall Facings

Section 6d
Ka

Aluminum Entrances

Section 16a
Kaw

Aluminum Sealair Windows

Section 17a
Kaw

Aluminum Canopies/Louvers

Section 19e
Ka

Litho in U. S. A. Form No. 60011

Kawneer

General Offices
NILES, MICHIGAN

ARCHITECTURAL
METAL
PRODUCTS

Factories in:

NILES, MICHIGAN
RICHMOND, CALIFORNIA
CYNTHIANA, KENTUCKY
TORONTO, CANADA