



Washington State  
**GOVERNOR'S  
ADVISORY  
COUNCIL ON  
HISTORIC  
PRESERVATION**

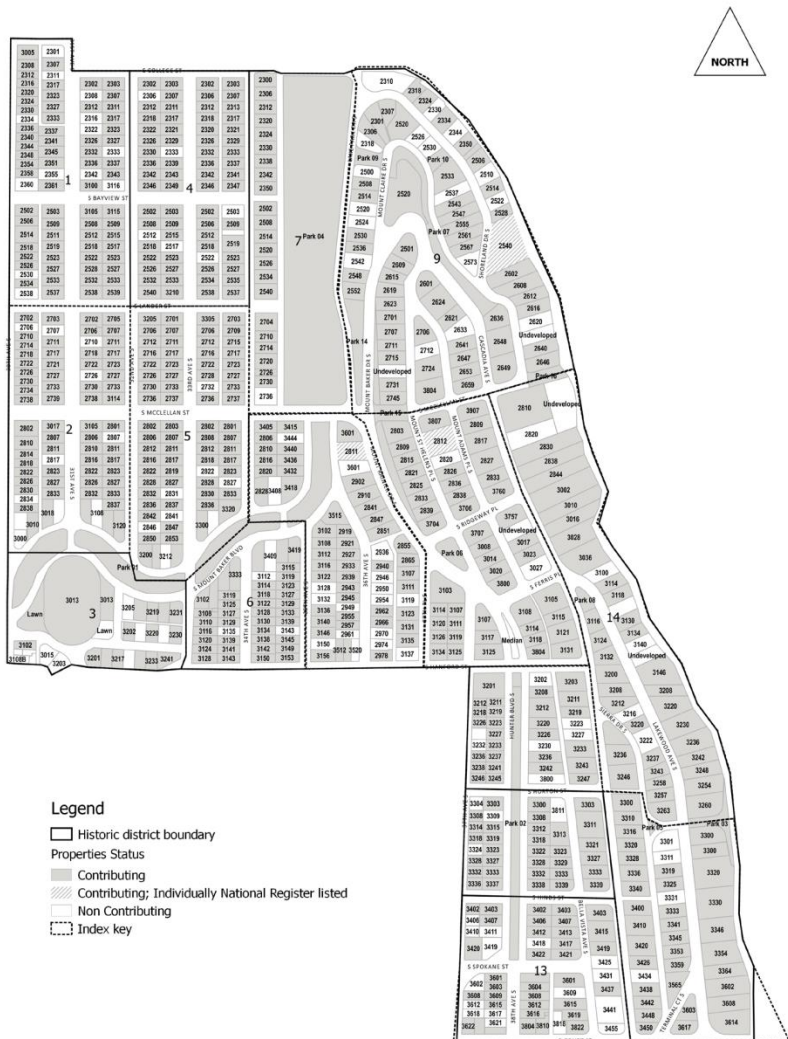
168th Meeting – Seattle

**PART 2**



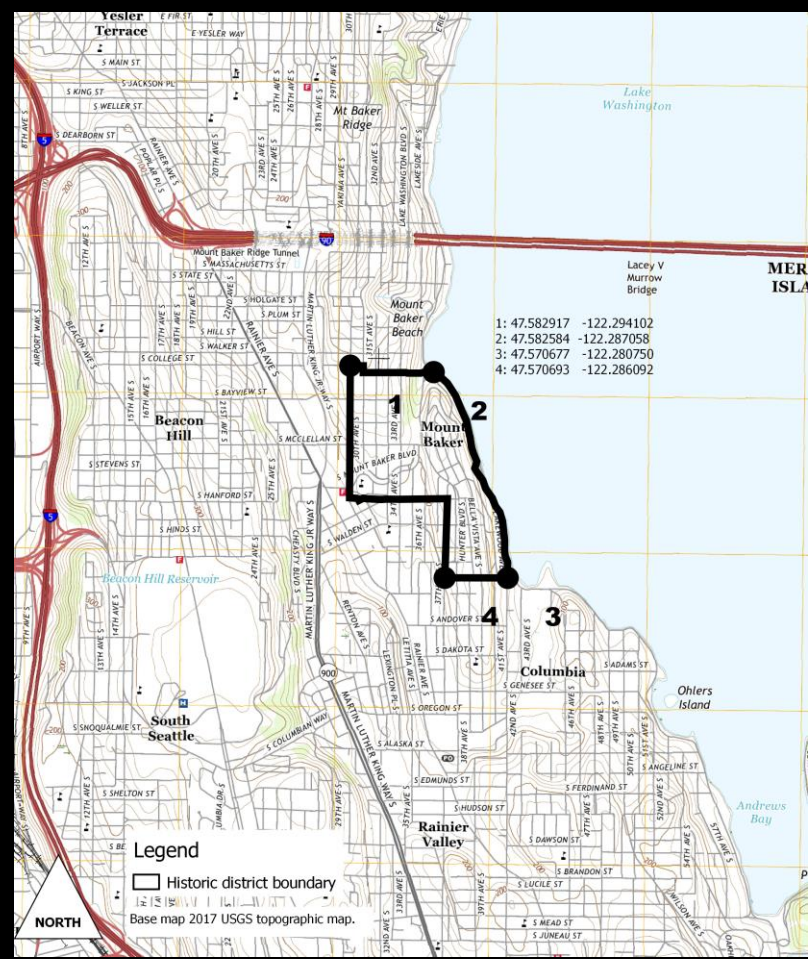


# Mount Baker Park Historic District



# Buildings:

Historic Contributing: 674  
 Non-Contributing: 126  
**TOTAL: 800**



- 1: 47.582917 -122.294102
- 2: 47.582584 -122.287058
- 3: 47.570677 -122.280750
- 4: 47.570693 -122.286092







# Craftsman



**REALTY AND TRADE SITUATION IN SEATTLE AND NORTHWEST**  
**NEW BUNGALOWS BUILT IN MT. BAKER PARK**

**ADVANCE IN SEATTLE SHOWN**  
 Over \$150,000 worth of bungalows added to Seattle in past thirty months.  
 A YEAR GIVE TO ONE OF PROGRESS

**PROPOSALS SHOW NEW VALUATIONS**  
 Interesting List of Tenders Filed With County in Other Part of State

**CAPITALIST TO BUILD HOSPITAL**  
 John H. Starling Announces Project, Aim of Which is to Give \$250,000

**TITLE ABSTRACT MOST IMPORTANT**  
 Real Estate Journal Points Out Fact That Record is Most Important Element of Transaction

**BOND MEN SEE BETTER TIMES**  
 Local Market's Improvement Reflects General Pick-up in Seattle

**TO SELL REALTY BETWEEN BITES**  
 Local Association Announces Luncheon's Feature Tuesday Night

**CITY WINS FAME WITH BUNGALOW**  
 Seattle Type, Distributed From That of California, Now Known Throughout World

**WORLD'S LOWEST TUNNEL**

**GOAT INDUSTRY STARTED**

**BUNGALOW MAGAZINE**

**SUPPLEMENT BUNGALOW**  
 Complete working drawings, Specifications and bill of material in this issue

**June 1916 - 25 Cents**

# Colonial Revival





# Tudor Revival



# Italian Ren. Revival



# Neo- Classical Revival



# Swiss Chalet Revival



**MANY HOMES IN MOUNT  
BAKER DISTRICT ARE SOLD**

Sale of a number of homes and lots in Mount Baker Park, the property in which he specializes, are announced by Frank G. Dewar, realtor, who says there has been much activity in the home market in the last six weeks.

The home of G. A. Bruce, 2105 32nd Ave. S., has been sold to George [unclear]; the home of J. H. Miner, 3405 34th Ave. S., to S. J. Henry; the home of W. L. Williams, 3205 Mount Baker Boulevard, to Harvey J. Tibbals; the home of Victor Sandberg, 30th Avenue South and Mount Baker Boulevard, to A. J. Meaker.

A Cascadia Avenue lot has been sold for Christ Oleson to Louis Vigelandius who is having plans drawn for a fine Colonial home for immediate construction. A lot at the corner of Ridgeway and Mount St. Helens



**MOUNT BAKER PROPERTY PURCHASED**



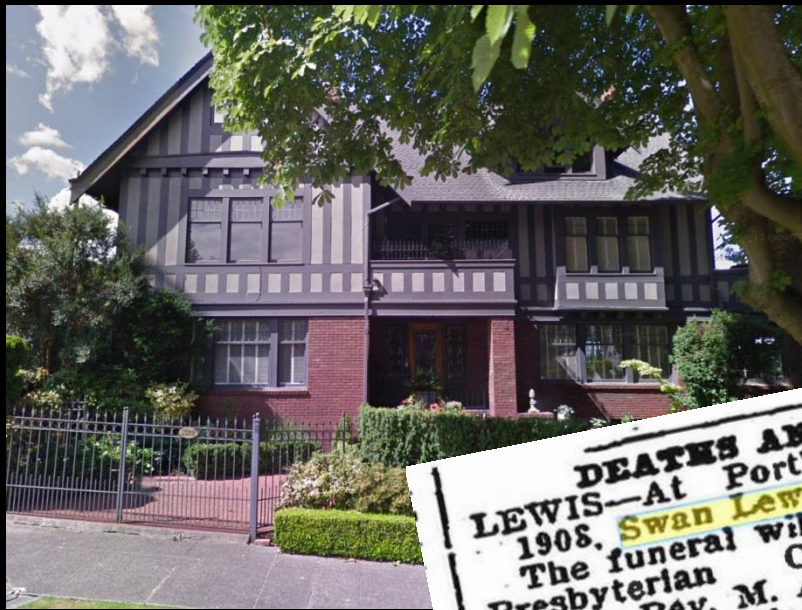
Purchase by Lynn M. Latta of the residence at 2828 34th Ave. S. announced last week by James Wheeler, Mount Baker Park realtor, in the Mount Baker Park district from the estate of Albert Koch was 1. It is one of the choice residential properties in that area.





# Hannah Lewis House II






**DEATHS AND FUNERALS.**  
**LEWIS**—At Portland, Ore.: April 28, 1908. **Swan Lewis**, age 45.  
 The funeral will be held at the First Presbyterian Church, Seventh and Spring, Rev. M. A. Matthews officiating, on Saturday, May 2, at 2 p. m. Fellow fraternal brothers and friends cordially invited to attend.



NEW ADVERTISEMENTS.  
**Oriental Hotel**  
 Second St., north of Cherry.  
 Board and Lodging \$1 per day, or \$6 to \$7 per week  
 Meals ..... 25 cts.  
**ELEGANTLY FURNISHED ROOMS**, Single or in Suits.  
 The house is new and hard-finished throughout.  
 Free coach to and from the hotel.  
**N. LEWIS**, Proprietor.

**SALE OF RENGSTORFF BLOCK.**  
**A Valuable Piece of Improved Property Changes Hands.**  
 Yesterday the property on Second street, known as the Rengstorff building, and the lot it stands on were sold to Mrs. Ella R. Downs, of Fairhaven, Wash. Mrs. **Nellie Lewis** was the owner of the land and J. H. Rengstorff of the building. The lot is sixty feet wide and the structure consists of a fine four-story brick business block, and was among the many new buildings erected in 1889, after the fire. The price paid is not announced, but is said to be a trifle under \$100,000, and the transfer was effected by the real estate firm of Carraher & Meacham.

**SEATTLE CENTRAL**  
**LEWIS BROS., PROPS.**  
 Cor. Sixth and Washington Streets

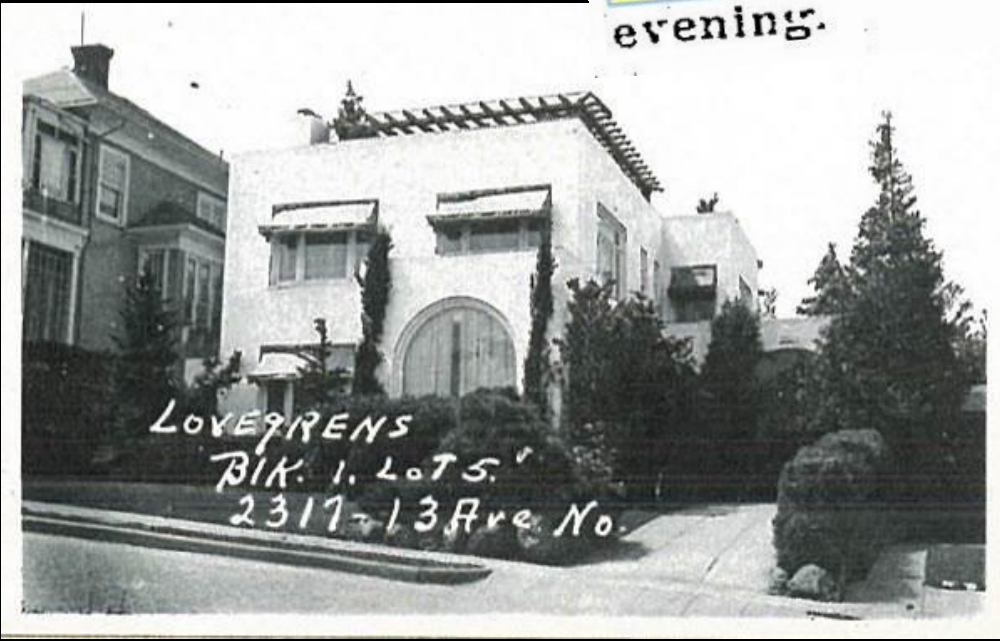


Furnished Rooms, all Light and Well Ventilated.  
 Per Day, 25 & 30c.; Week, \$1.50, \$2.00;  
 Month, \$5, \$6; Suites, \$8, \$10 per Month.  
 House contains 160 Rooms, recently furnished at a cost of \$20,000  
 ELEGANT OFFICES, PARLORS AND RESTAURANT IN CONNECTION  
 Electric Lights and Bells, Free Baths, Free Bus, Telephone and all Modern Conveniences.  
 ROOMS UNRIVALLED FOR ELEGANCE AND COMFORT.  
 GIVE US A CALL AND BE CONVINCED



\* \* \*  
Mrs. Swan Lewis entertained about  
one hundred guests at a house warm-  
ing at her new home at **2317 13th**  
Ave. N. on Saturday evening, May 27.  
Music and dancing were the diver-  
sions.

\* \* \*  
Mrs. Hannah Lewis, assisted by  
Mrs. Ida Delfel, will entertain with  
a benefit card party for the Pythian  
Sisters at the home of the former,  
**2317 13th** Ave. N., at 8 o'clock this  
evening.



**QUALITY VIEW HOME**

For discriminating people who desire something "different." Overlooking beautiful Seattle Yacht Club harbor on exclusive N. E. side of Capitol Hill. Truly spacious 4 bedrooms, 2 bathrooms, full basement with delightful ballroom, complete laundry facilities, oil heat. Magnificent hardwood floors throughout. Sun deck. Exterior white stucco California modern. Full price \$35,000.

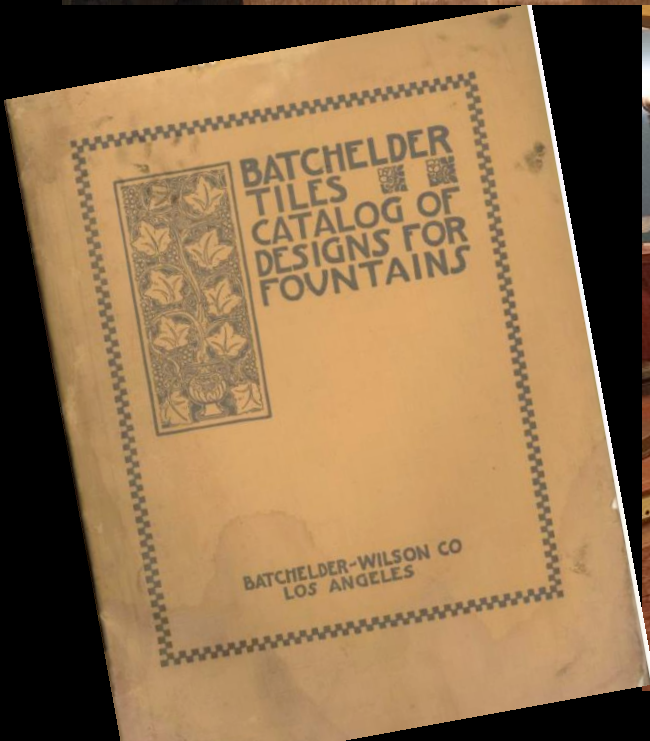
**2317 13th NORTH**  
Call J. H. Lewis, Care Yates,  
Riley & MacDonald, MA. 4682.



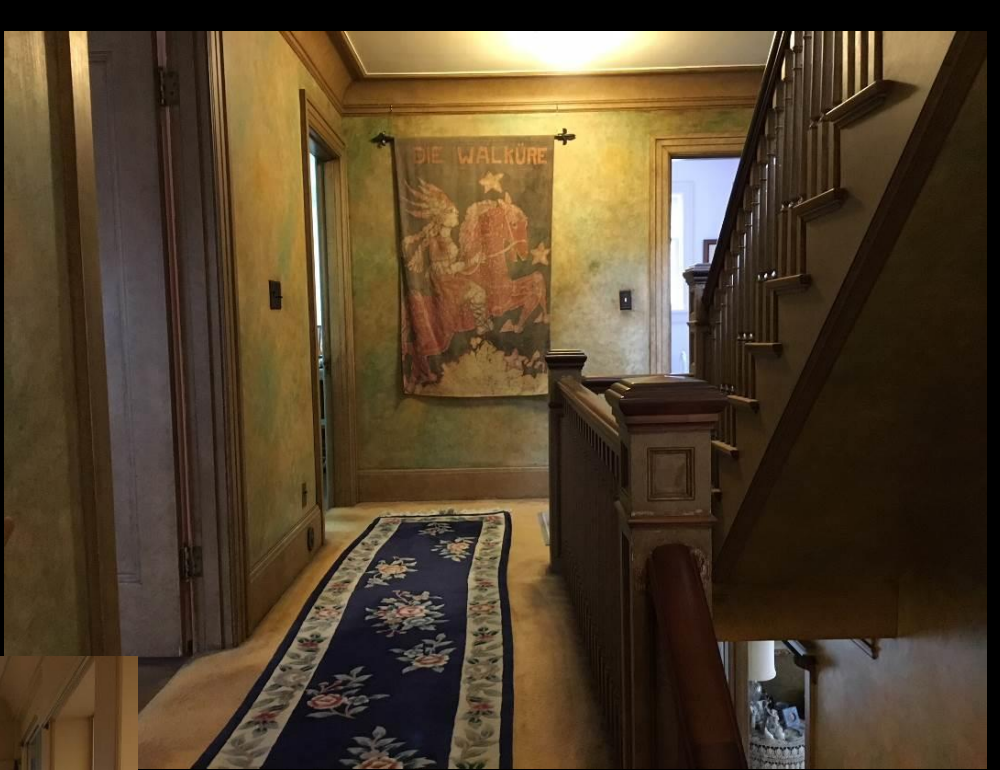
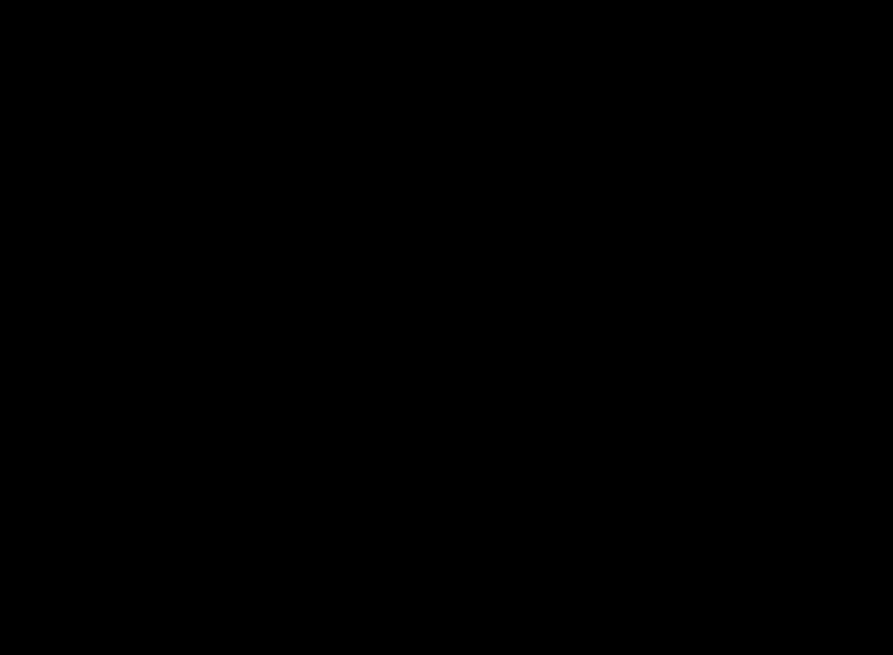












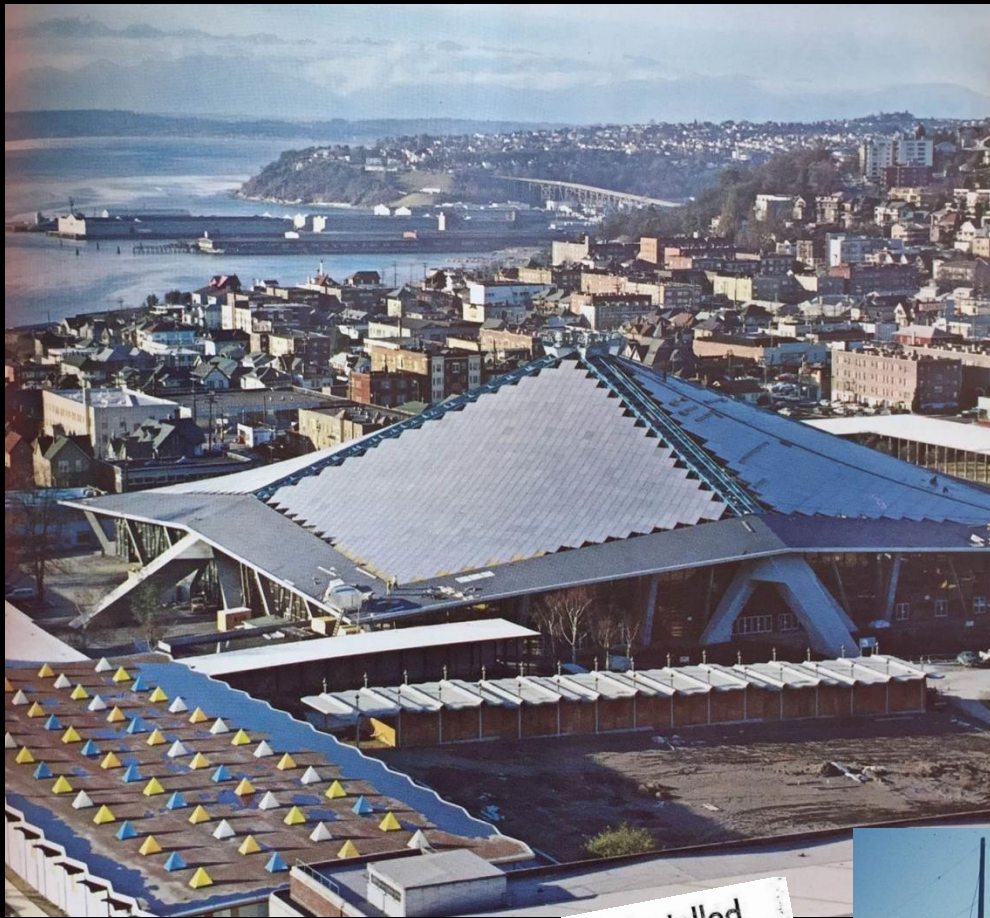






# Century 21 Washington State Coliseum

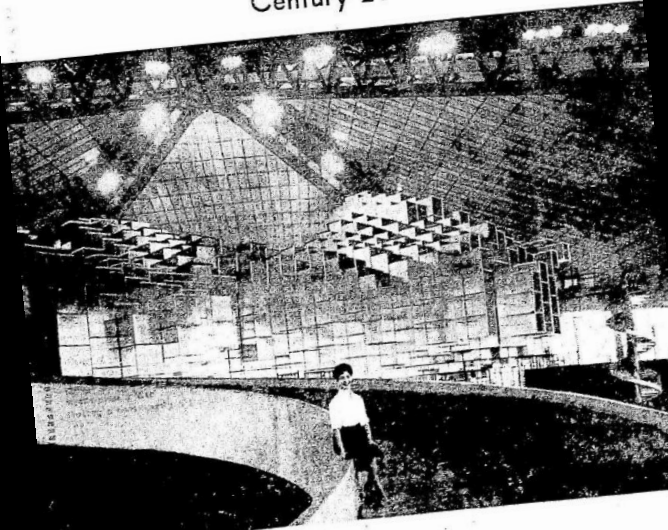




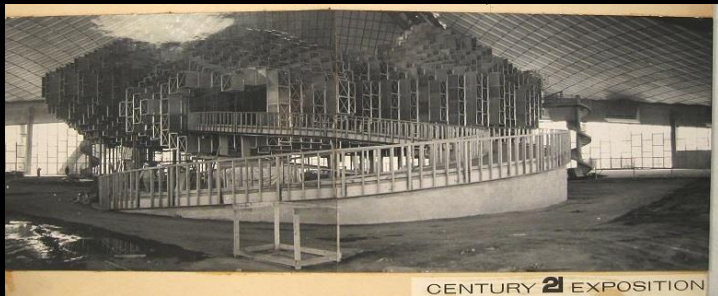
Cables for C-21 Coliseum Roof Panels Installed



We are proud to have been  
 chosen to erect the  
 Thousands of Aluminum Cubes for  
**THE MAN IN SPACE  
 THEME EXHIBIT**  
 Washington State Coliseum  
 Century 21



**ALMETCO**  
 Manufacturers of Aluminum Bldg. Products  
 • Windows • Doors • Residential • Commercial  
**ALMETCO MANUFACTURING COMPANY, Inc.**  
 Seattle 99, Washington ATwater 2-0859  
 3827 13th Avenue West

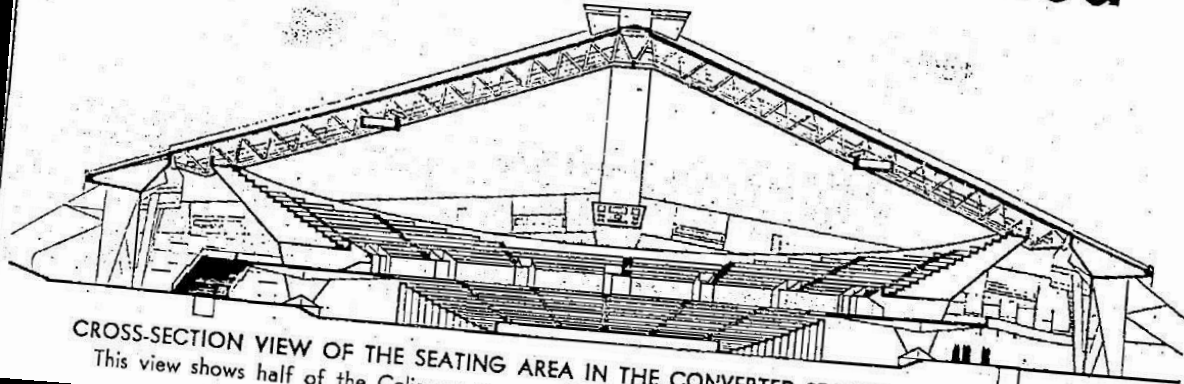


CENTURY 21 EXPOSITION

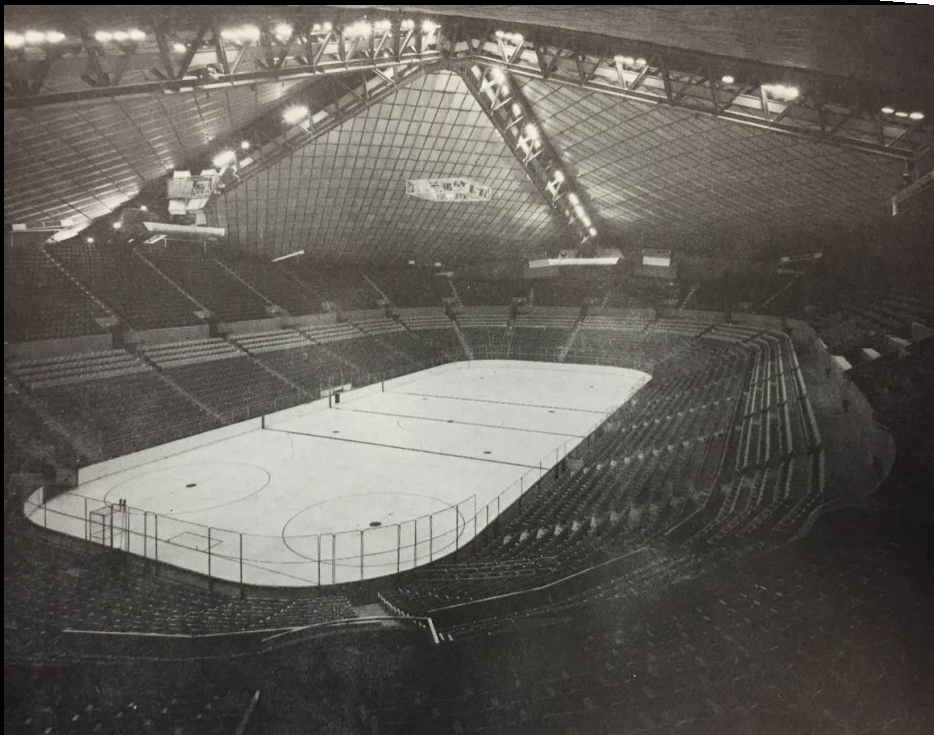


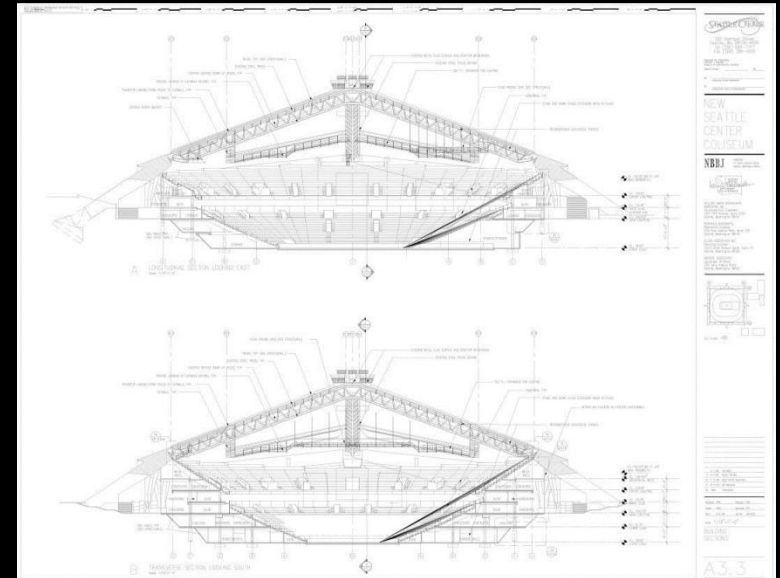


PLANS READY SOON:  
**Coliseum Conversion Pushed**



CROSS-SECTION VIEW OF THE SEATING AREA IN THE CONVERTED SEATTLE CENTER COLISEUM  
This view shows half of the Coliseum as it would be arranged with about 12,500 seats for hockey



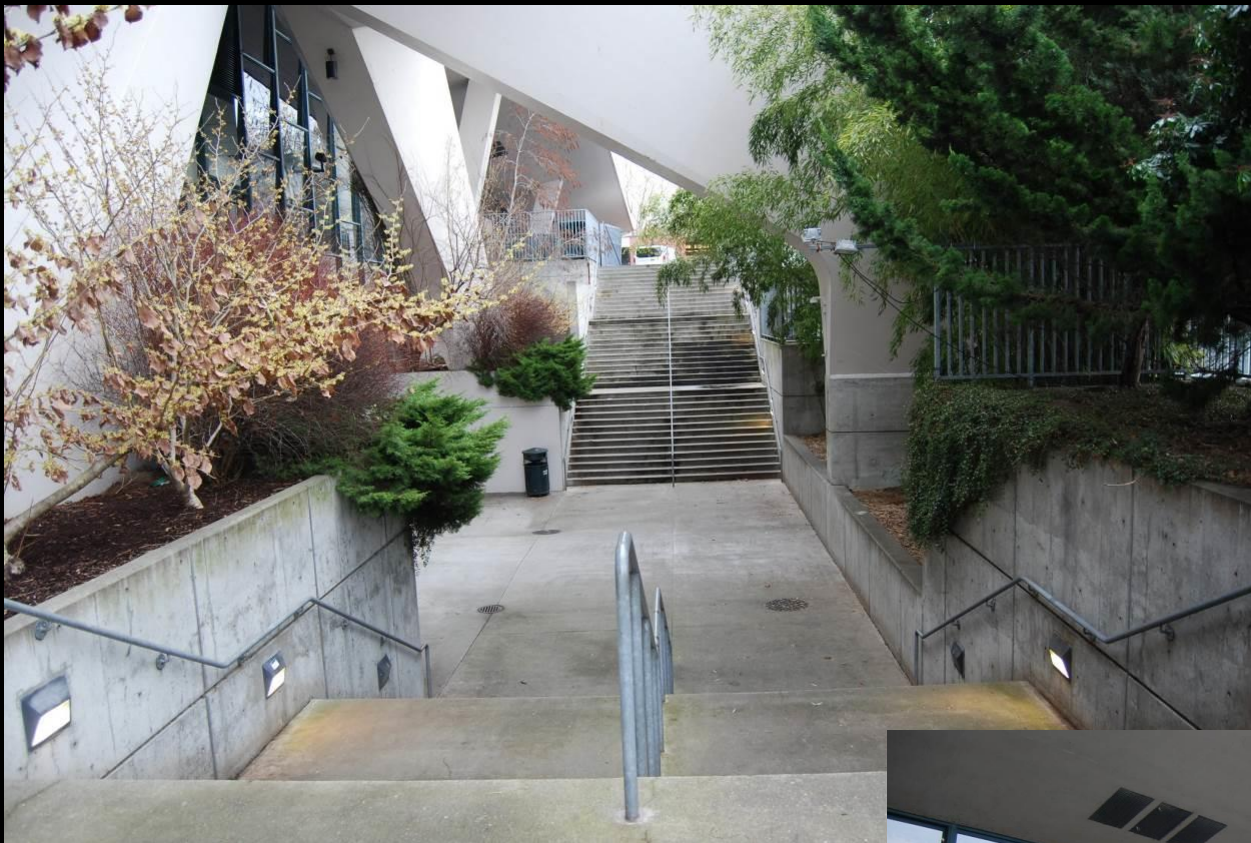


1994-95 remodel

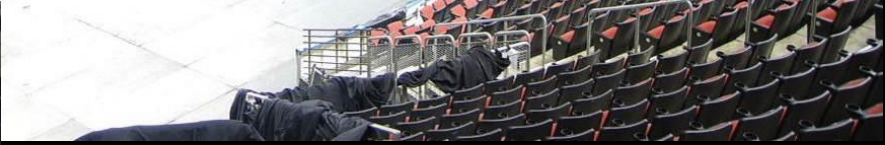
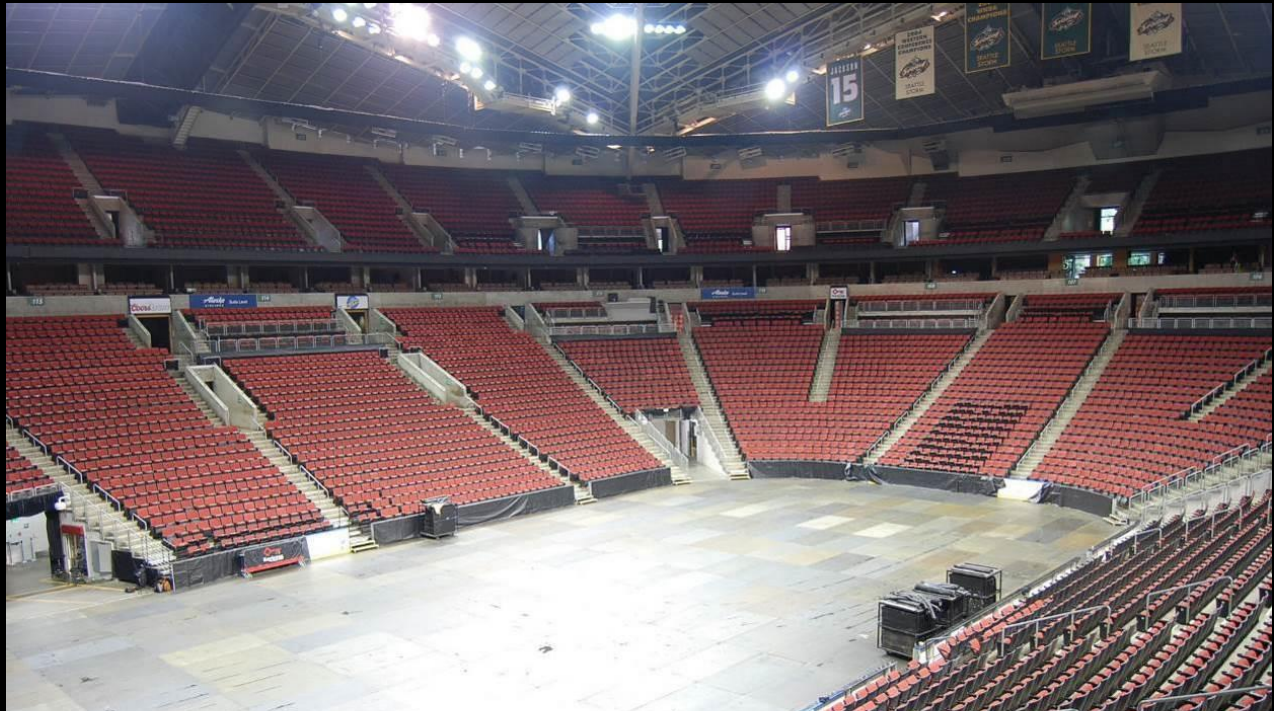
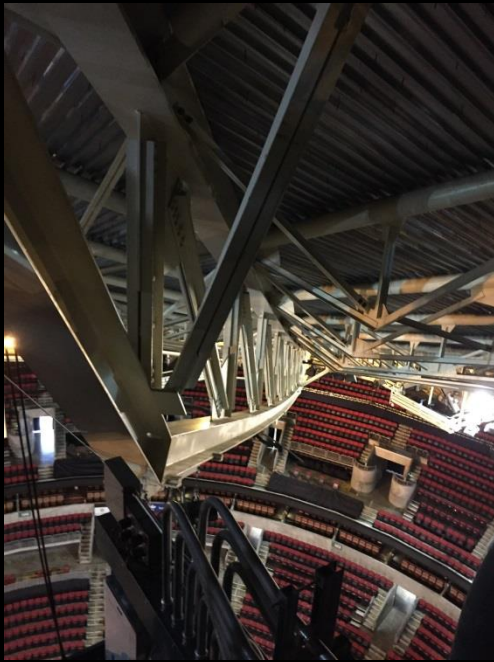
















# Covington Substation BPA





**Maintenance Warehouse (C)**

**District Office (NC)**

**Automotive Storage (C)**

**Landscape (C)**

**Fueling Station (NC)**

**Untanking Tower (C)**

**TLM Vehicle Canopy (NC)**

**Automotive Storage Bunker (NC)**

**HMEM Shop (C)**

**Transportation Paths (C)**

**Switchyard (C)**

**SPC Shop (NC)**

**PSC & SPC Office (NC)**

**Control House (C)**

**Landscape (C)**

**Communication Building (C)**

**Flammable Storage (C)**

**Engine Generator Building (C)**

**Microwave Tower (C)**





CIIO-J51-343-41-9-10-(6398)



CIIO-J51-3423-42-5-19-(8615)



E36856



CIIO-J51-343-42-2-17-16-(7477)

CIIO-J51-343-42-2-17-26-(7480)

CIIO-J51-343-42-2-17-3/5-(7481)

CIIO-J51-343-42-2-17-4/5-(7482)

CIIO-J51-343-42-2-17-5/5-(7483)



E47517

# 1948



## REPORT on the Columbia River Power System

Department of the Interior  
BUREAU OF RECLAMATION  
U. S. DEPARTMENT OF THE INTERIOR  
BONNEVILLE POWER ADMINISTRATION

HYDRO BUILDS  
THREE SHIPS

WHERE ONE WAS  
BUILT BEFORE

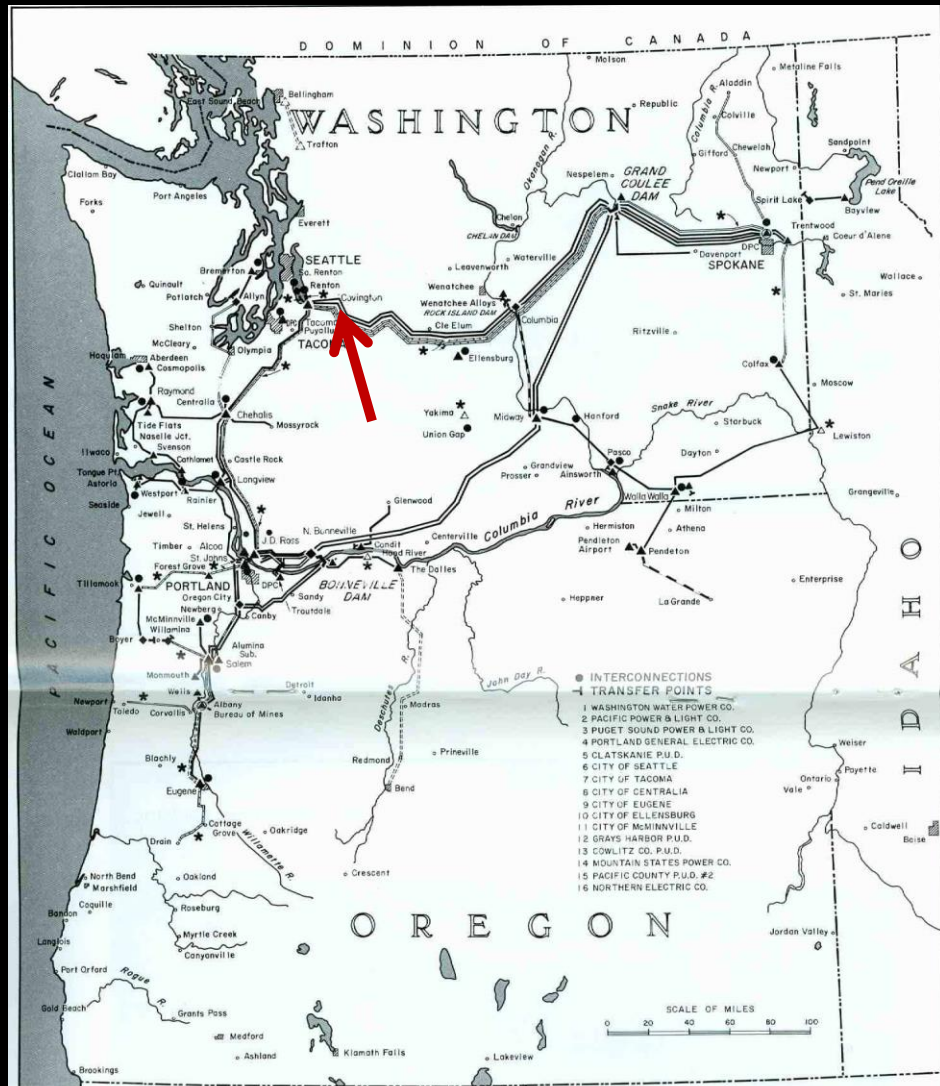
THROUGH THE MAGIC OF  
ELECTRIC WELDING

**BONNEVILLE FIGHTS TIME**

**LIGHT UP**

Now  
**BONNEVILLE  
POWER  
IS CHEAPER**

GOOD LIGHT 25 kWh \$1.13 A MONTH



### LEGEND

SUBSTATION	SWITCHING STATION	INTER-CONNECTION	TRANSMISSION CIRCUITS	
▲	◆	●	—	In Service
△	◇	○	- - -	Additions under const'n
▽	◊	◌	—	Under construction
△	◇	○	- - -	Design
▽	◇	◌	—	Survey
△	◇	◌	- - -	Proposed

- DPC Indicates Defense Plant Corporation facility
- ★ Indicates construction has been deferred
- Indicates Power Exchange interconnection
- Indicates power transfer point for serving B.P.A. customers with B.P.A. equipment

Note: Points of B.P.A. service by transfer with B.P.A. metering are omitted.

UNITED STATES DEPARTMENT OF THE INTERIOR  
BONNEVILLE POWER ADMINISTRATION  
PAUL J. RAVER, ADMINISTRATOR

### STATUS OF TRANSMISSION SYSTEM

AS OF DECEMBER 31, 1944

Designed: RES	Sub. Res. & Thomsen	Approved: Walter H. Bronght	DATE: 6-30-43	SHEET 1 OF 3
Drawn: RES	Res. & Thomsen	Acting Chief Engineer	Serial No.	Drawing No.
Checked: LEO	Res. & Thomsen		23117	00-8211-B5









# Boundary Hydro- Electric Project



















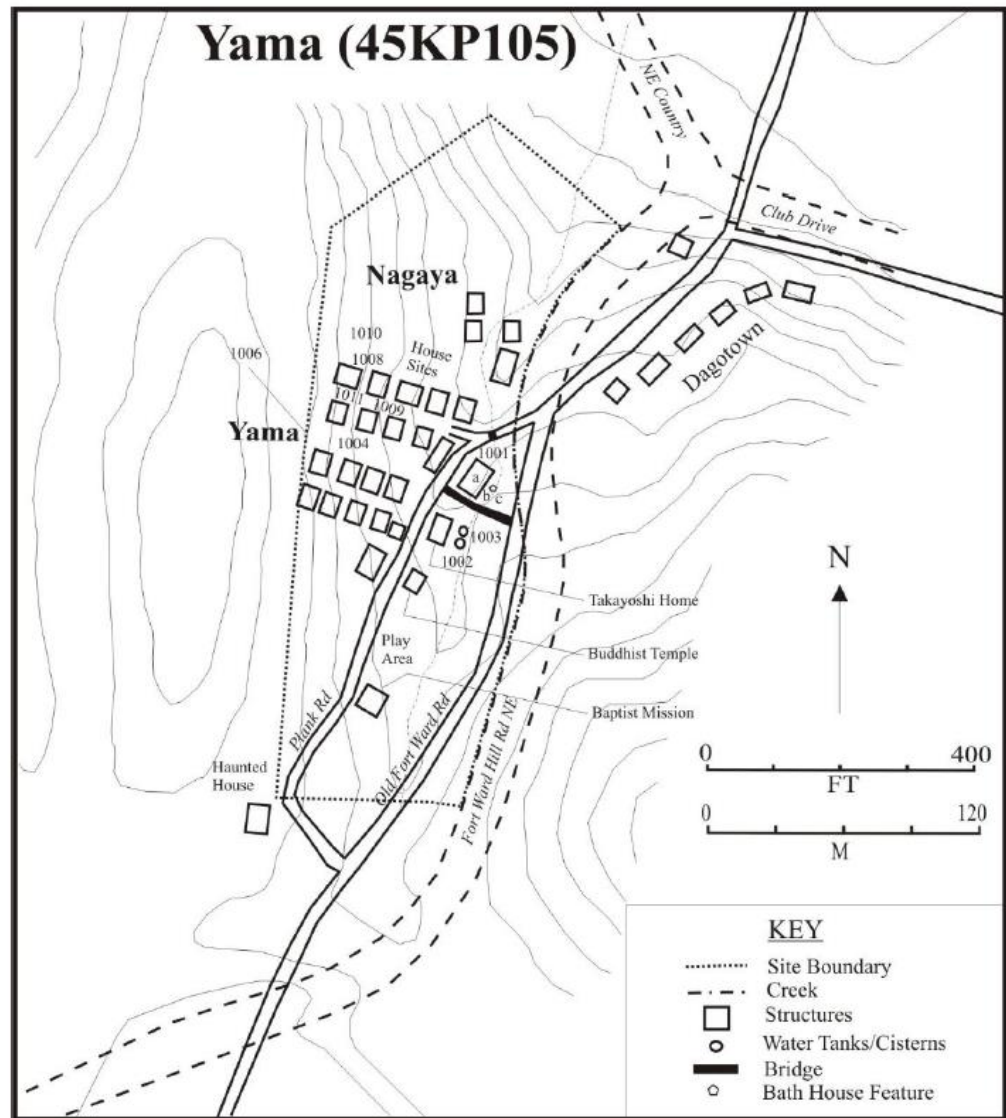
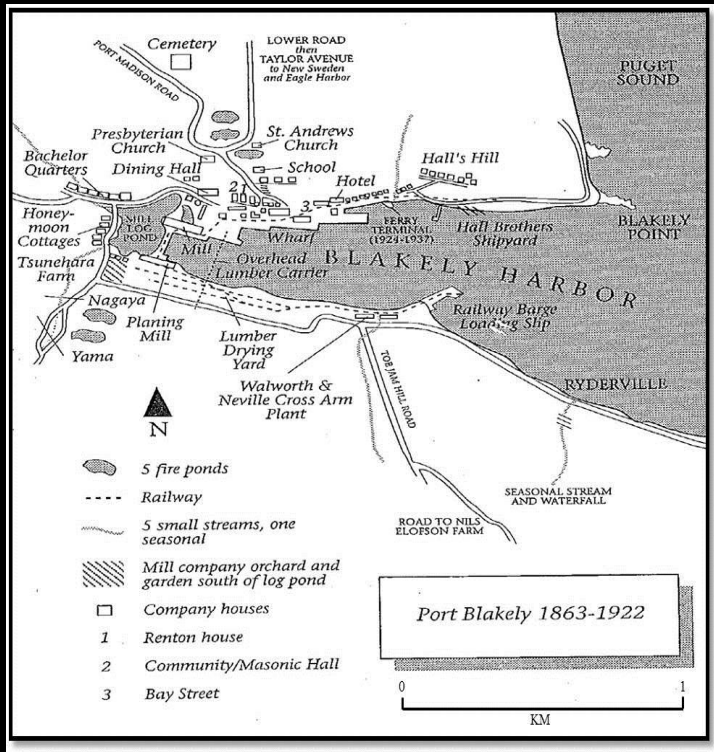




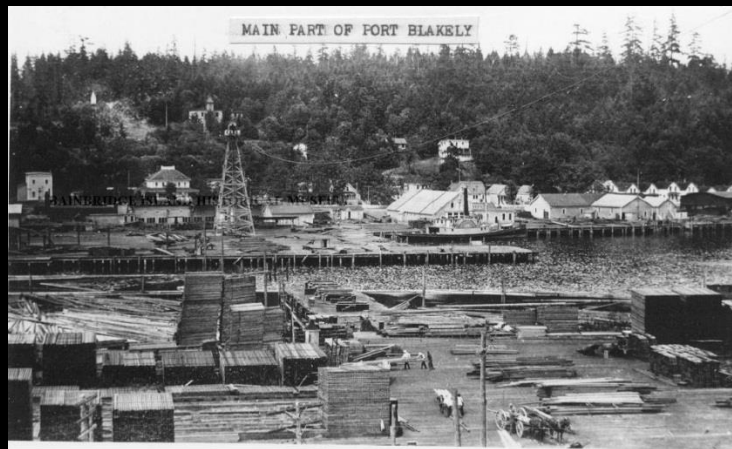




# Yama & Nagaya Village



R. Drolet 2014b (Modified from Adam & Goldsworthy 2011)





MAIN STREET IN  
YAMA, JAPANESE  
COMMUNITY AT  
PORT BLAKELY.  
IN THE 1920's;  
NEARING THE END.





Back row - Raymond, George, Ray  
Charles, John (Rayne Brothers)  
Lawrence Cunningham standing manual





Washington State  
**GOVERNOR'S  
ADVISORY COUNCIL  
ON HISTORIC  
PRESERVATION**

168th Meeting – Seattle

