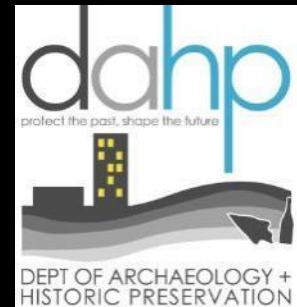




Washington State **GOVERNOR'S ADVISORY COUNCIL ON HISTORIC PRESERVATION**

171st Meeting – Seattle





Herbert & Barbara Munson House









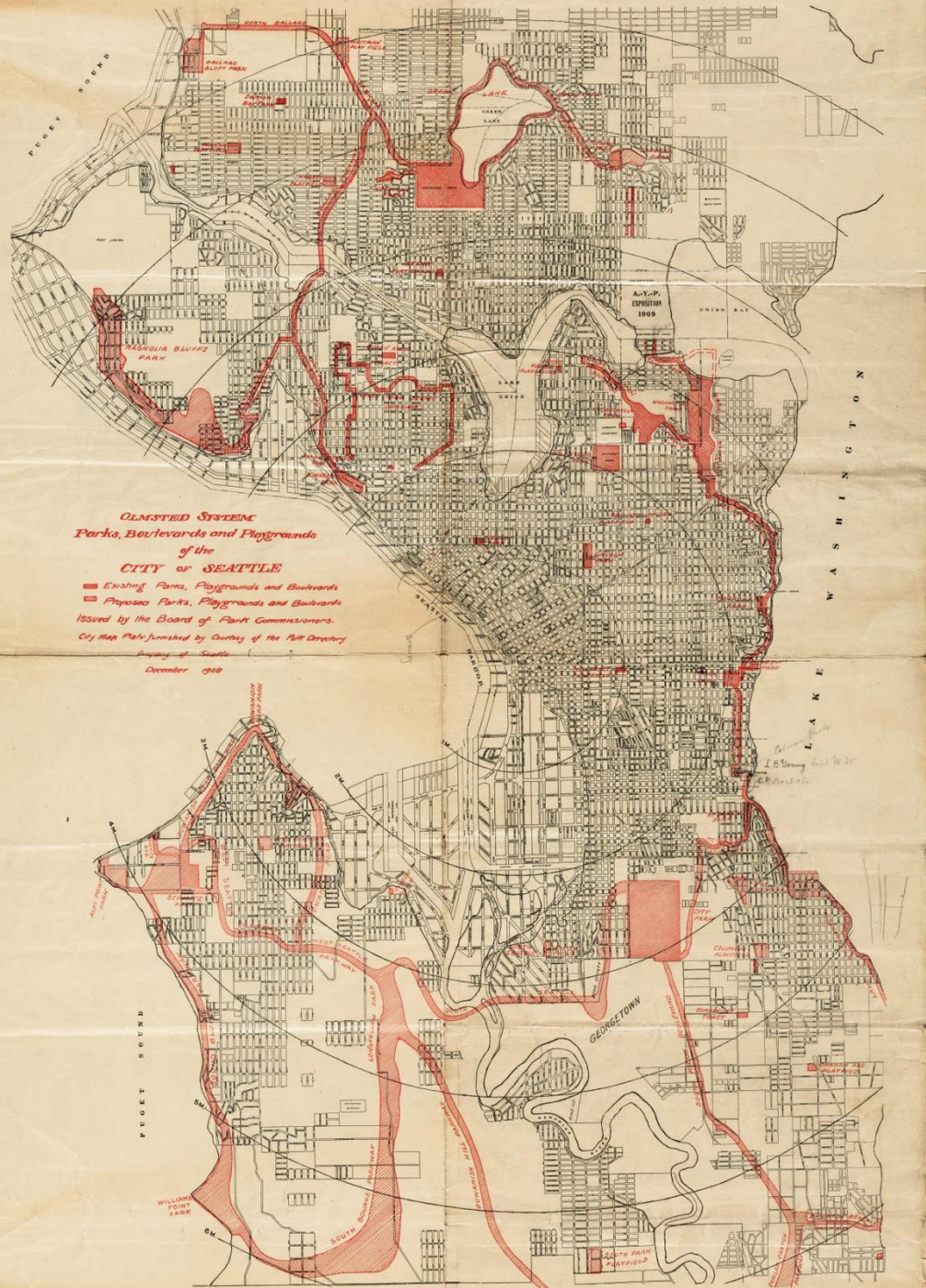








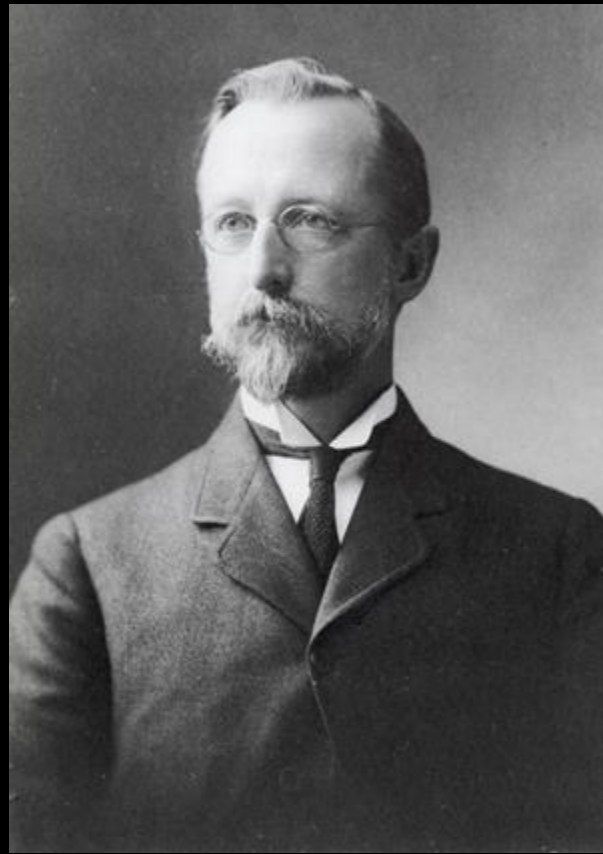




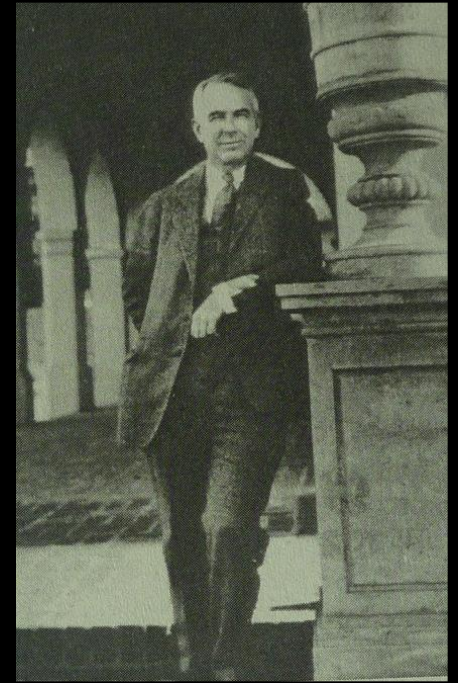
Seattle's Olmsted Park System MPD



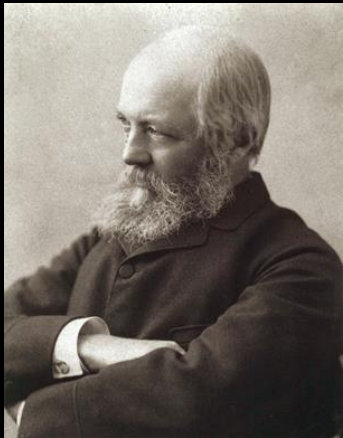
Frederick Law Olmsted Jr.



John C. Olmsted

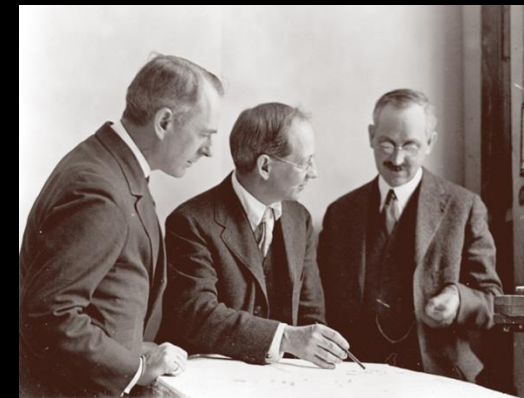


Frederick Dawson



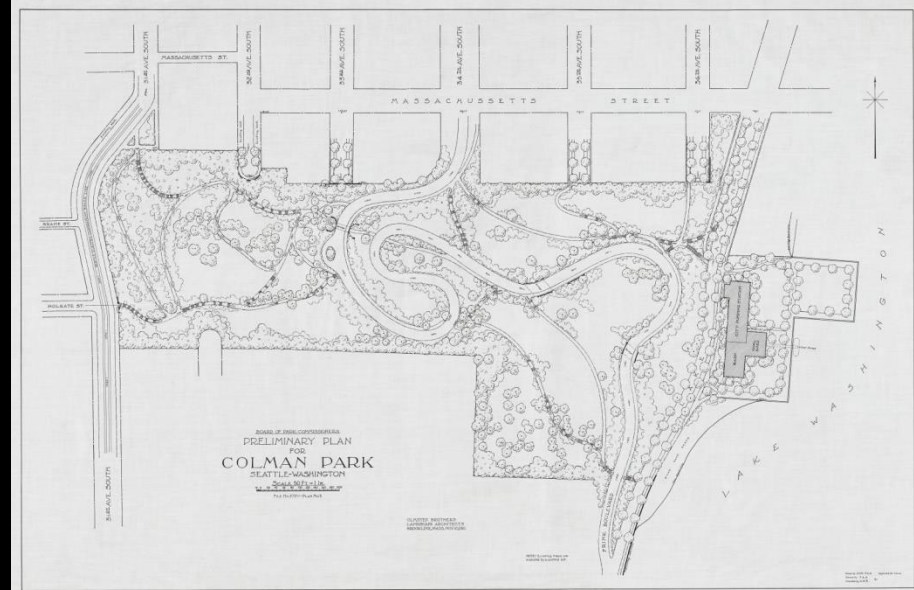
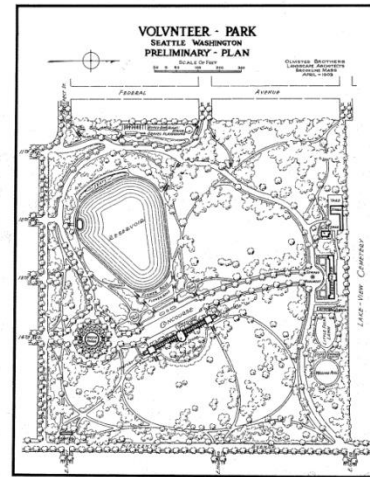
Frederick Law Olmsted Sr.

Charles Brothus
Landscape Architects
Brookline - Mass - Sept. 30, 1909.



Property Types

1. Landscape Parks
2. Recreation Parks
3. Boulevards & Parkways



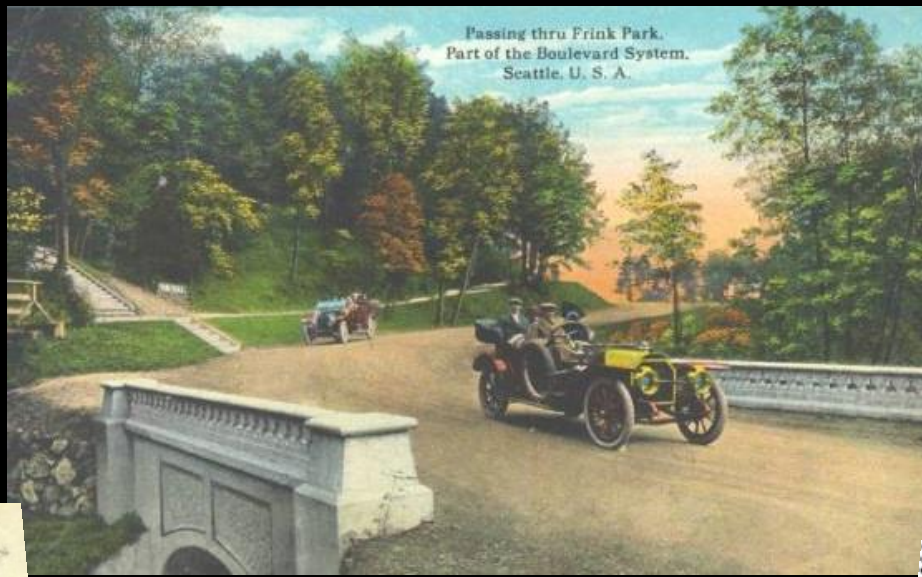


Frink Park





FRINK PARK
June 1913



FRINK DONATES A LARGE PARK TRACT

President of Washington Iron Works Makes Most Valuable Present to City That Has Ever as Yet Been Recorded.

VALUE SET AT LEAST AT THE \$50,000 MARK

Resolutions Passed Thanking Donor for Splendid Gift—Architect Olmsted Engaged to Lay Out Boulevard.



JOSEPH E. FRINK
OFFICER OF THE BOARD OF THE Washington Iron Works and member of the board of park commissioners for parkland, has made the largest donation of the city's history in the history of the city. At a meeting of the park board at 10 o'clock on the 14th, Frink donated twenty acres of land south of Leschi Park and in the city. The property has the most valuable parking proposition in the city. Frink donates the land without jurisdiction over the property to improve it as it sees fit. He is in no way interested in the tract and the property as he voluntarily. At the meeting this afternoon the entire holdings of the donor of the property for the tract should be decided that improve the tract. It is planned to name the new tract Frink Park. It will be laid out according to the plans of the architect.

Frink Park
OLMSTED BROTHERS
LANDSCAPE ARCHITECTS, BROOKLINE, MASS.

JOHN CHARLES OLMSTED FREDERICK LAW OLMSTED
ARTHUR OLMSTED
JAMES FREDERICK OLMSTED

For the Board of Park Commissioners
29th May, 1912.

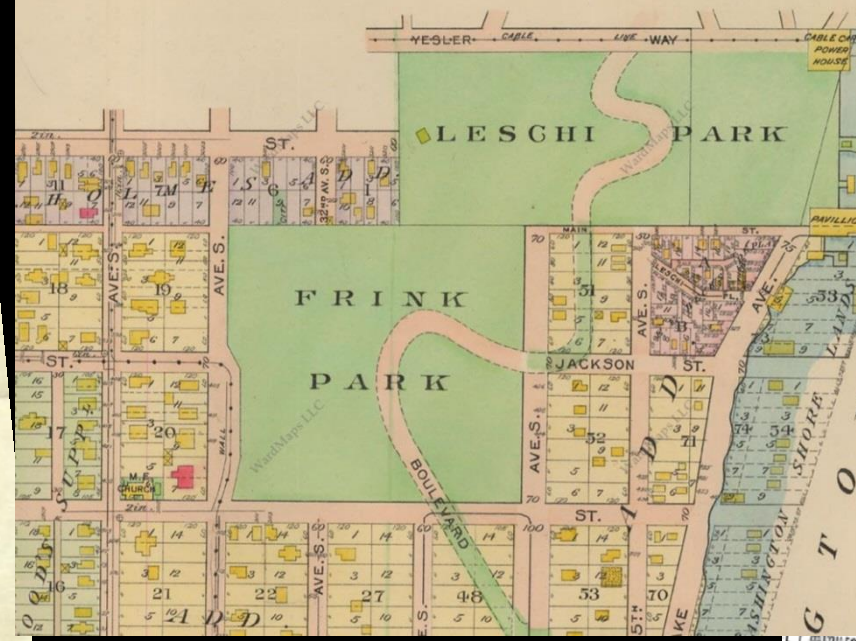
Mr. J. W. Thompson, Superintendent of Parks, Seattle, Wash.

Dear Sir:

We beg to explain herewith our plan for Frink Park left in the park office and explained to you at the time of Mr. Dawson's last visit. The principal improvement of this park seems to be the connecting road between Jackson Street and the park boulevard. We propose a road coming through a heavy cut on about a 25 or 30 foot out, but the importance of a road seems to us to warrant such grading. We propose with this drive we have planned for a number of years which will better enable visitors to the park from one part to another and to become a boulevard with the park than would otherwise be possible.



J. M. FRINK

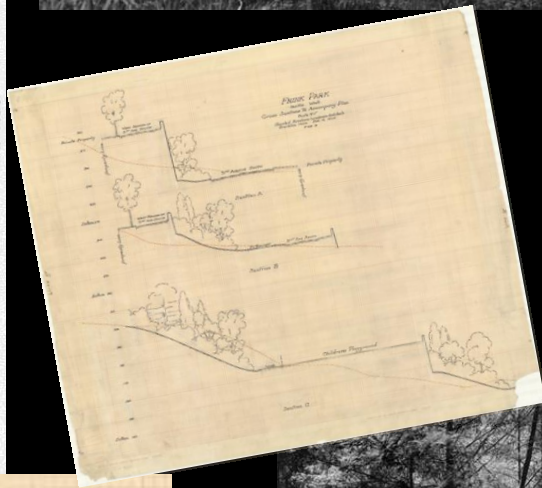


G T O



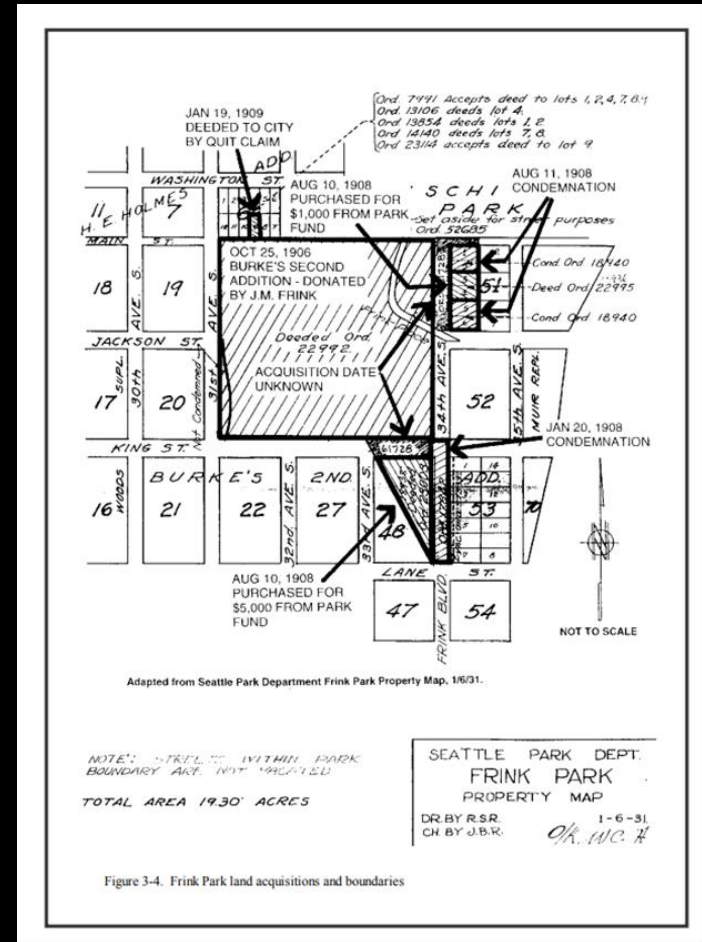
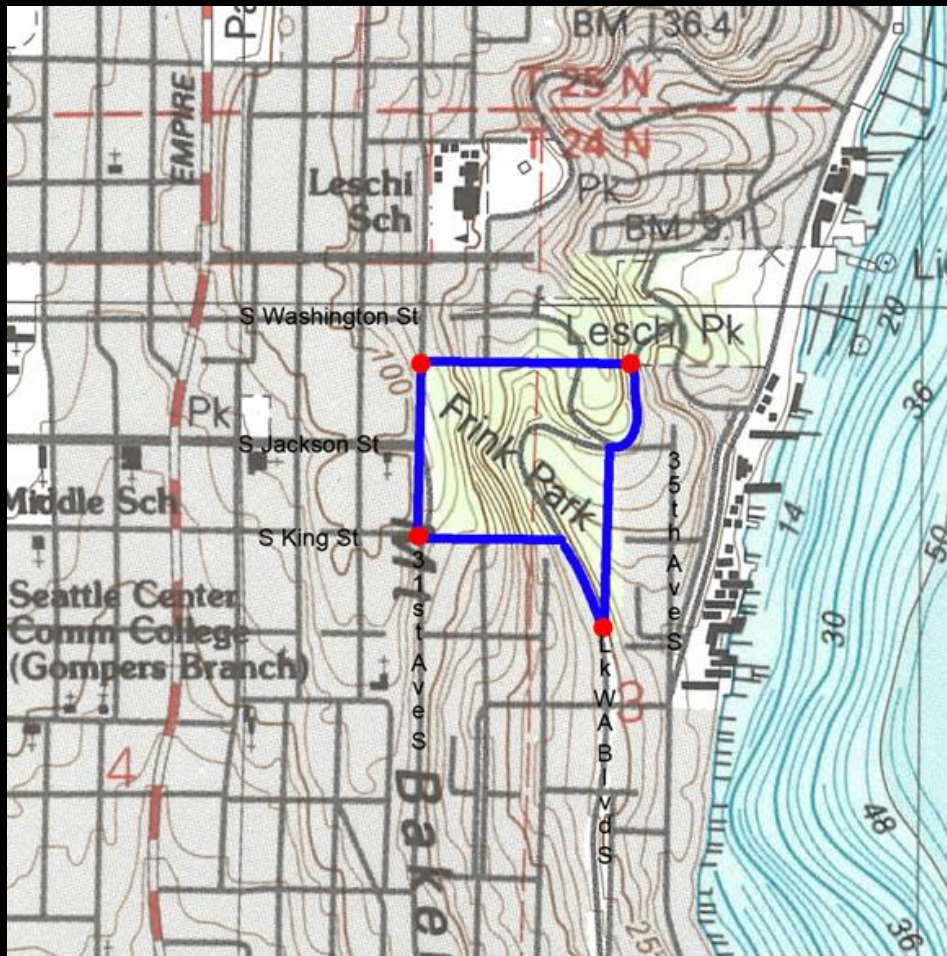
FRINK PARK
SEATTLE - WASH.
GRADING PLAN
Scale 40'-1"
Olmsted Brothers Landscape Architects
Brookline Mass. Sept. 24, 1908
2708 - 18

Drawn by [unclear] Approved by [unclear]
Checked by [unclear] Date [unclear]



FRINK PARK
Seattle Wash
Cross Sections To Accompany Plan
Scale 16'-1"
Olmsted Brothers Landscape Architects
Brookline Mass Feb. 18, 1908
2708 - 9





Park Resources:

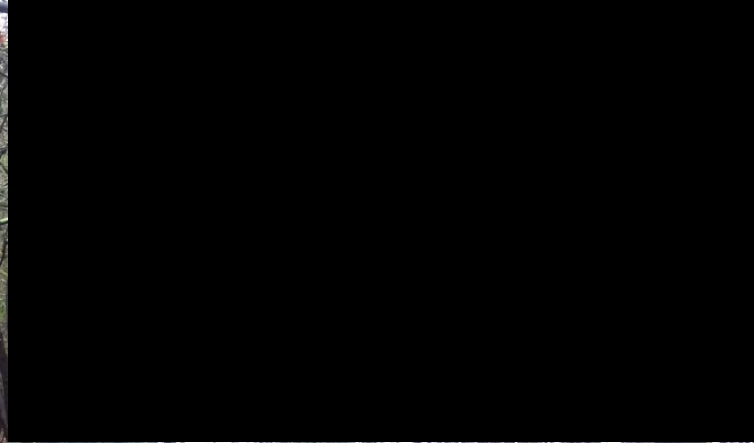
Park
Frink Place

- Site (Contributing)
- Structure (Contributing)

Frink Bridge
Lake Washington Blvd

- Structure (previously listed)
- Structure (previously listed)













Mount Baker Park & Boulevard



Park Resources



Lake Washington Blvd Roadway

Lake Washington Blvd Footpath

Mount Baker Park Blvd

Mount Baker Park

Mount Baker Park Comfort Station

Kobe Pagoda Lantern

Tennis Courts

Children's Play Area

Mount Baker Park Beach

Retaining Walls & Steps

Bathhouse, Pier, and Swimming Raft

Lake Washington Footpath

Dose Terrace Steps

- (Previously listed)

- (Previously listed)

- (Previously listed)

- (Previously listed)

- Contributing

- Contributing

- Non-Contributing

- Non-Contributing

- Contributing

- Contributing

- Non-Contributing

- (Previously listed)

- Contributing

SPEND

Your Money and Your Life

LAKE

WASHINGTON

PLOTS SHOWN
IN RED - LOTS -

TERMS -
25% Cash
Balance in
6 @ 6%
Interest 12 mos.

Mount Baker Park
AN ADDITION WITH CHARACTER

Daniel Jones & F. L. Fehren, Ag'ts.
Ind. 695 117 CHERRY ST. Main 2984

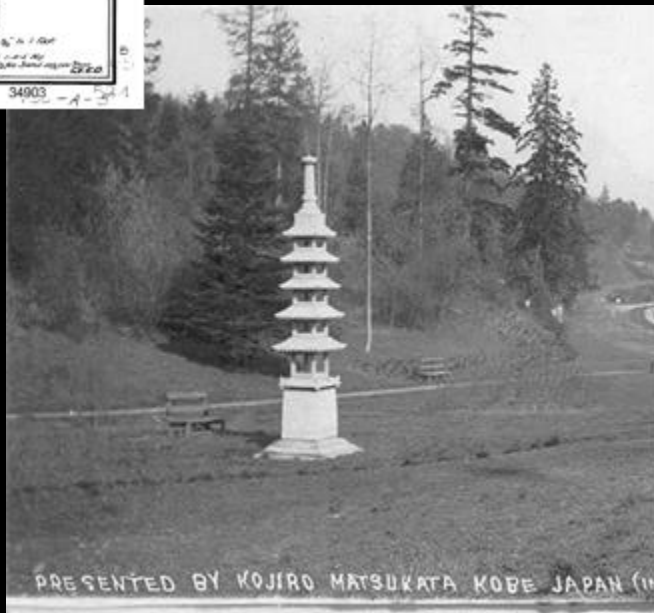
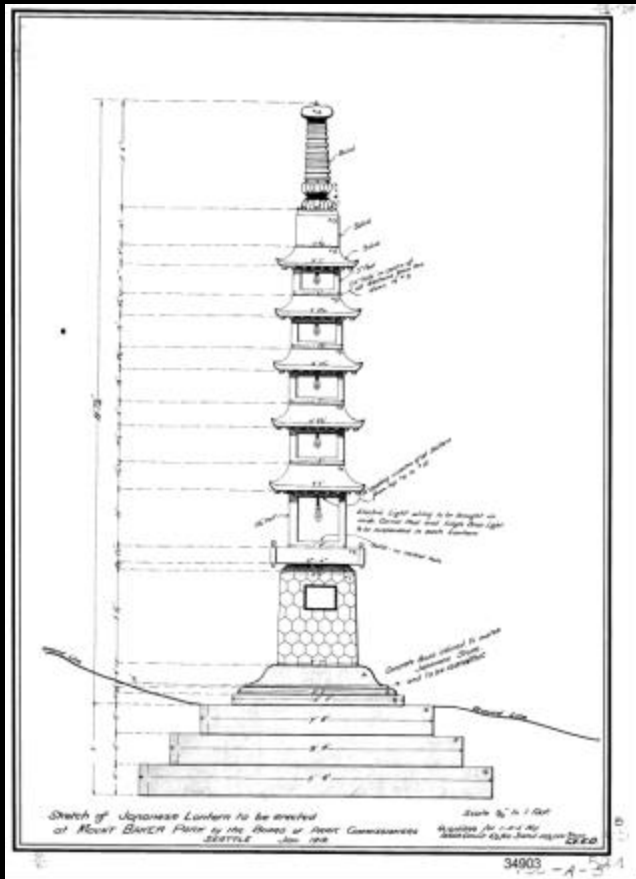
Office on Grounds at 34th and
East, 2552: **McClellan St.** Ind., 6944.

MITCHELL PHILLIPS, Mgr.

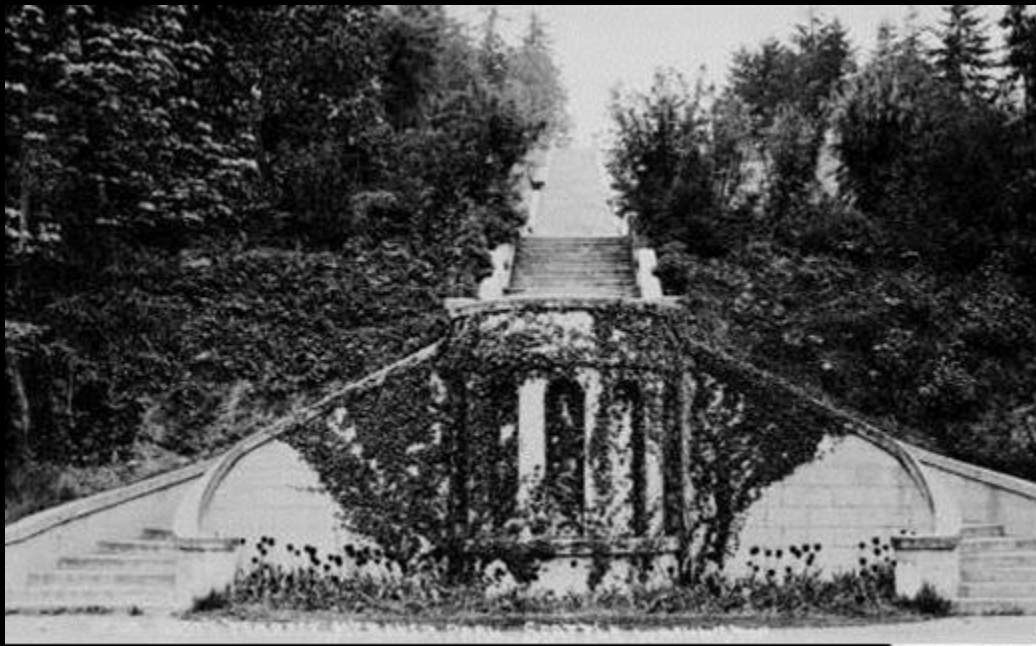
RESERVE YOUR LOTS
AT THE OFFICE









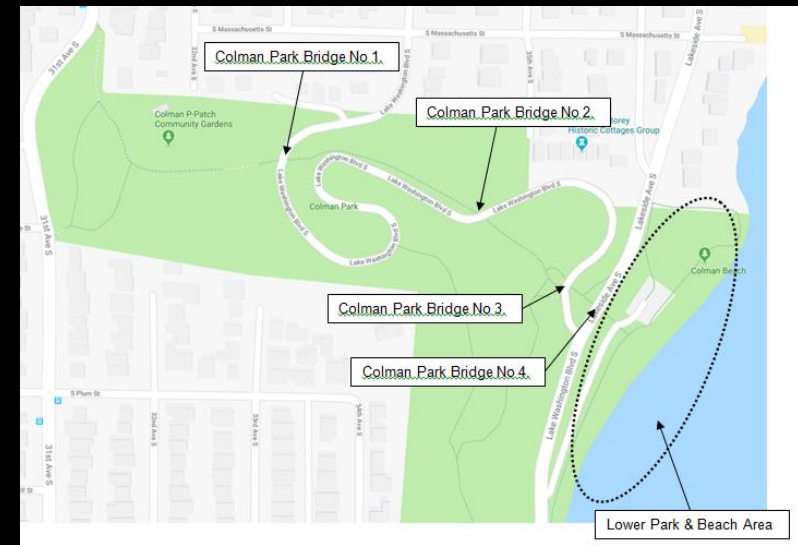






Colman Park





Park Resources:

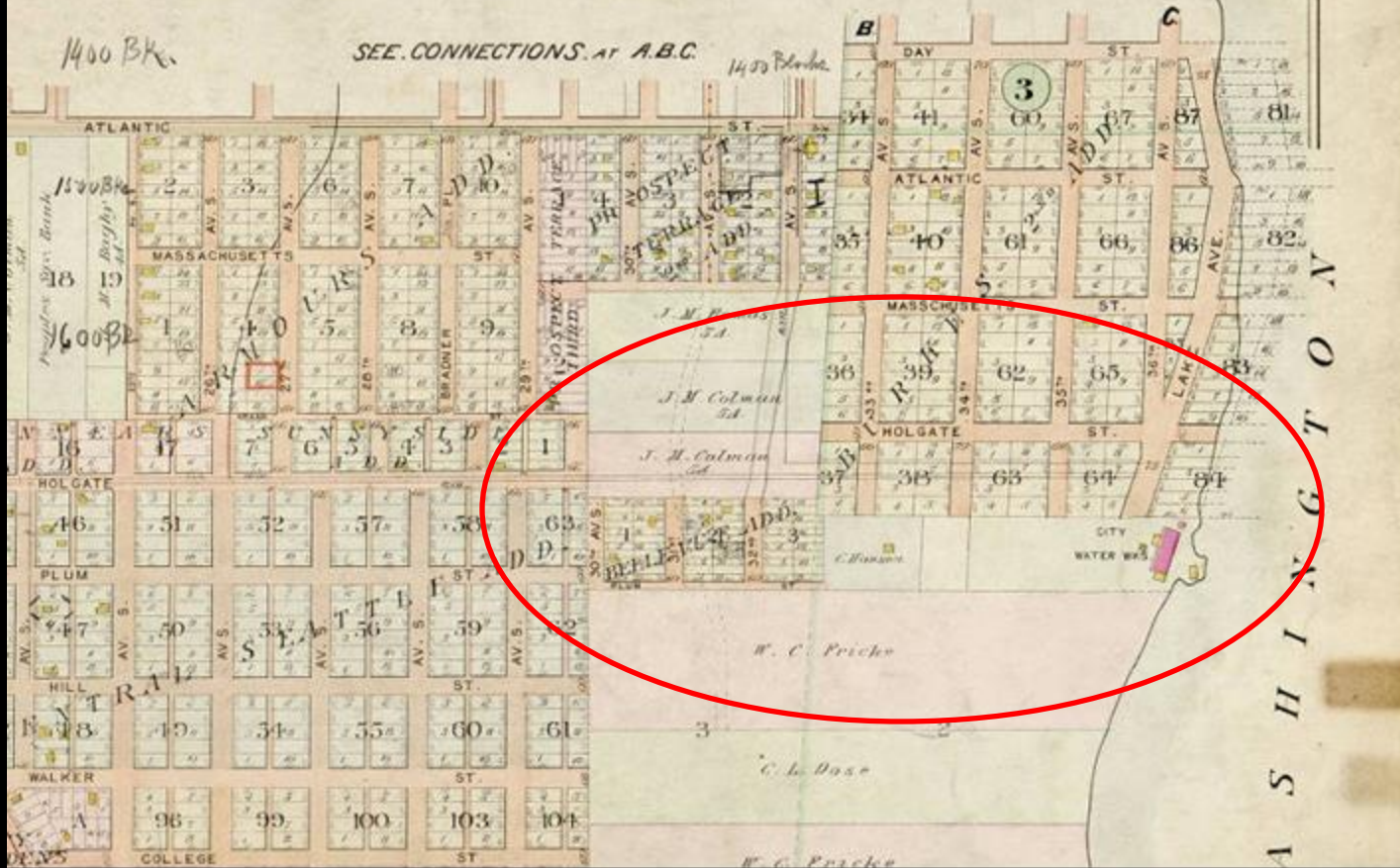
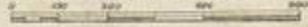
- Lake Washington Blvd – Structure (previously listed)
- Colman Overpass No. 1 – Structure (previously listed)
- Colman Overpass No. 2 – Structure (previously listed)
- Colman Overpass No. 3 – Structure (previously listed)

- Colman Overpass No. 4 – Structure (Contributing)
- Service Building – Building (Contributing)
- Colman Park – Site (Contributing)
- Lower Park & Beach Area – Site (Non-contributing)

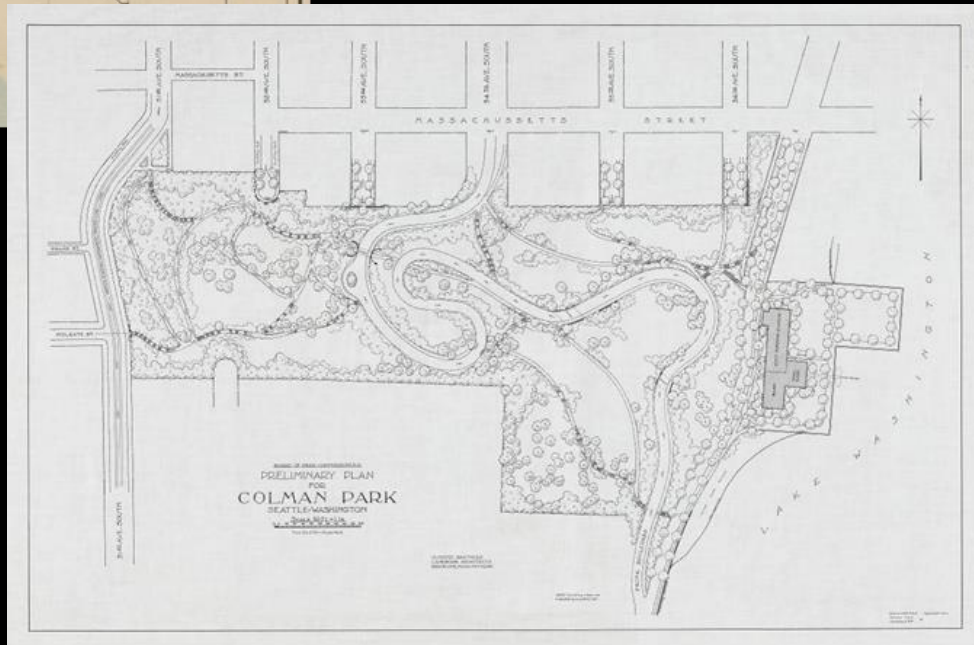
BAIST'S REAL ESTATE ATLAS OF SURVEYS OF SEATTLE

COPYRIGHTED BY E. W. BAIST

Scale 300 feet = 1 inch



1905 Baist's Real Estate Map



Beautiful Seattle. The Figure Eight
in the Mt. Baker Park Boulevard.

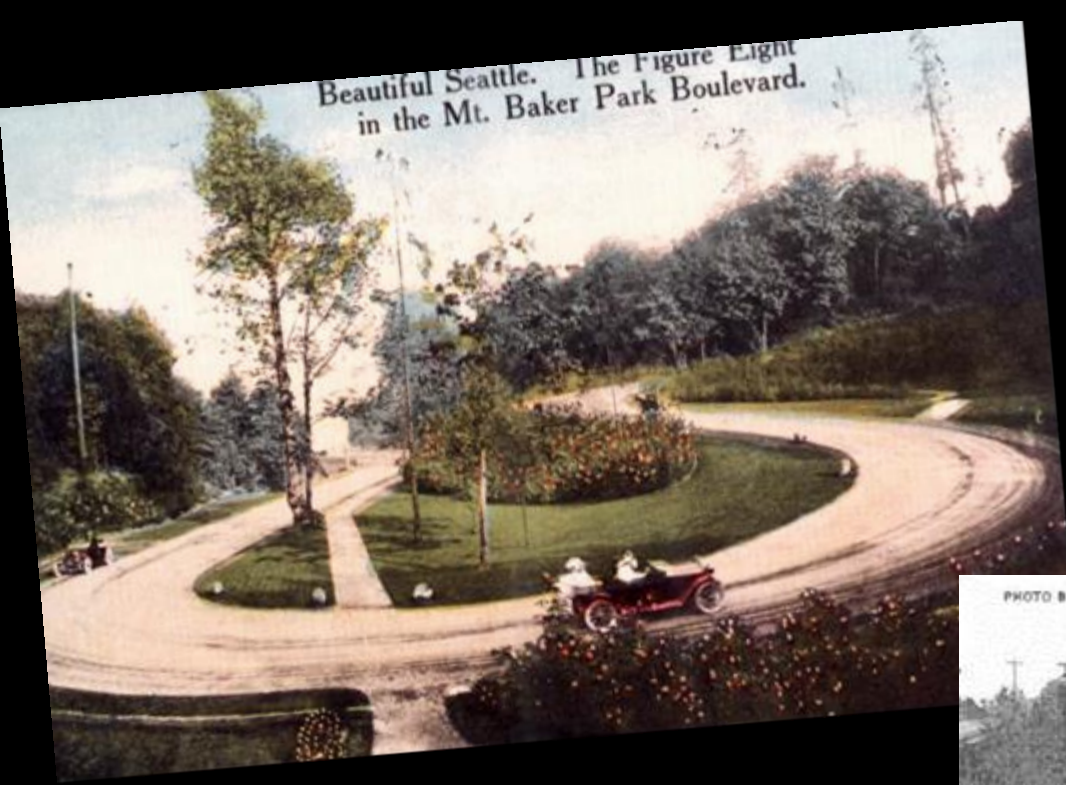
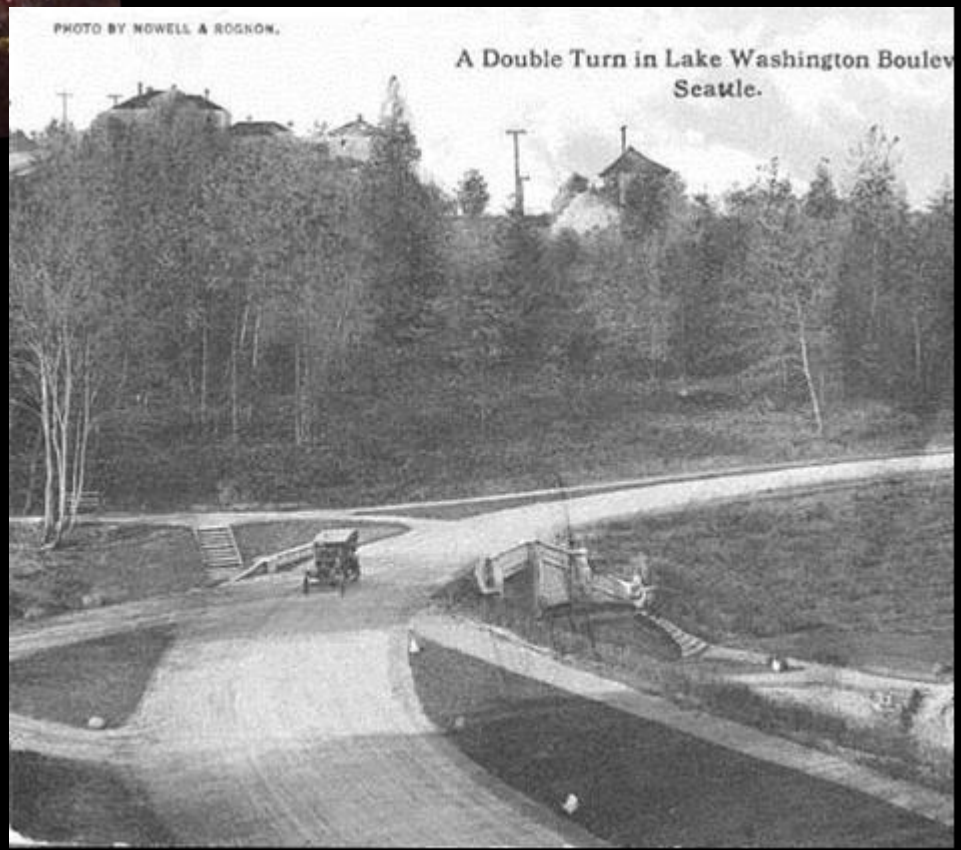


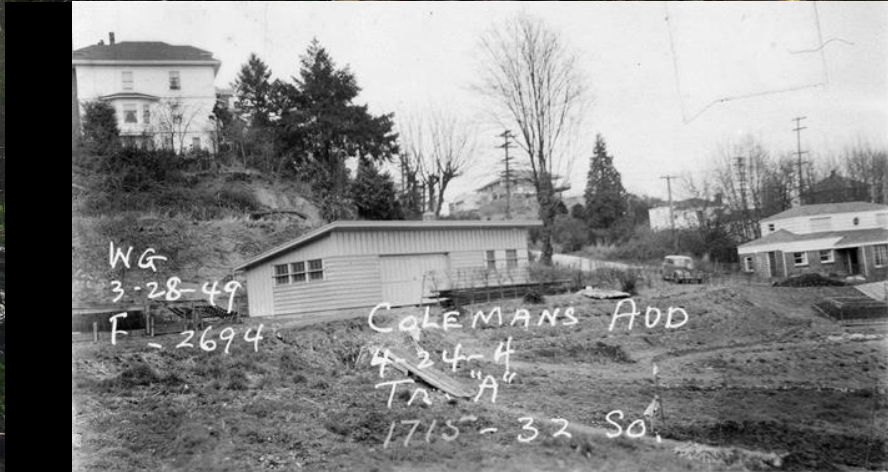
PHOTO BY NOWELL & ROGNON.

A Double Turn in Lake Washington Boulevard
Seattle.















Knights of Columbus Hall



KNIGHTS OF COLUMBUS

722

WALKWAY
NO PARKING
EXCEPT AS SHOWN
ON SIGN



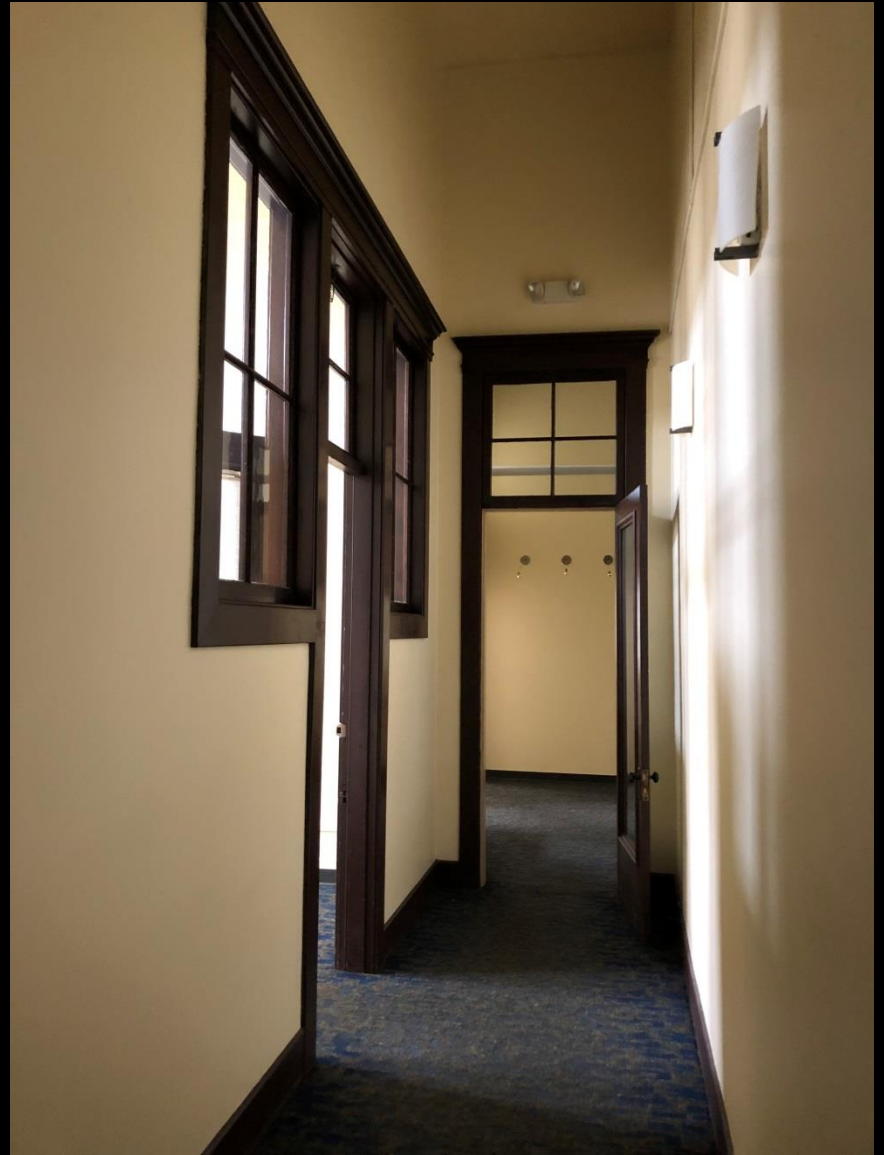
















Fratern Order of Eagles Hall - Anacortes

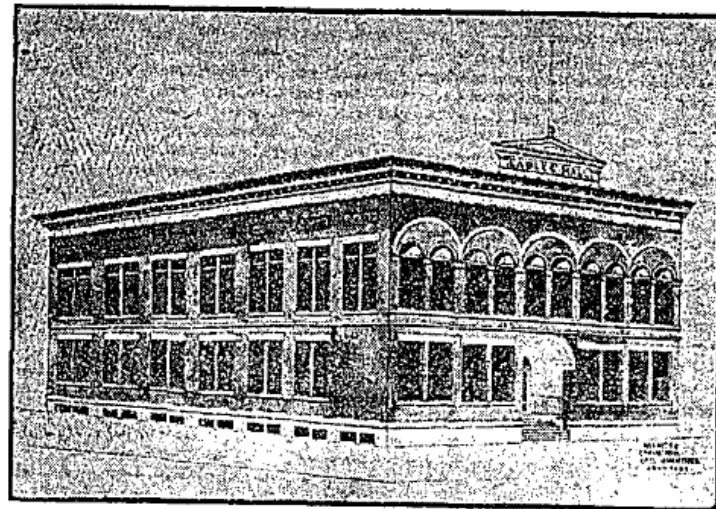


EAGLES READY TO OPEN HOME

DEDICATION OF NEW CLUB WILL TAKE PLACE SEPTEMBER 5— CEREMONIES OPEN TO PUBLIC—PARENT AERIE TO SEND 500 EAGLES BY SPECIAL BOAT.

Members are witnessing the program for the dedication and official opening of their new home and it will soon be completed and announced. The affair will cover three days, beginning Saturday evening, September 4, and a big ball for the ladies the following day, and to those with a taste for Monday and dance in the hall on the afternoon.

Of course, Sunday will be the big day, for on that day Seattle Aerie will send five hundred members and their famous wives, and if more dedication ceremonies, and if more come they instead of the Washington club has been chartered for the occasion. They will arrive at 2 o'clock, and will be met by the local Aerie at 3 o'clock, and will be then



NEW HOME OF ANACORTES EAGLES AS IT WILL APPEAR

EAGLES WILL BUILD HOME

LOCAL AERIE DECIDES TO ERECT \$30,000 CLUB HOUSE ON PROPERTY AT CORNER OF G AND SEVENTH.

Desiring to proceed at once to the erection of a lodge home on the lots owned by them for several years at the corner of G Avenue and Seventh Street, Anacortes Eagles Monday night employed Earl Lovell in charge of the plans for a two story club home to cover the property consisting of two lots. Lovell will report at the next meeting of the lodge, and an architect will be instructed to proceed with the preliminary plans.

Alternative plans will be drawn, calling for different types of material in the building—concrete, brick, tile and frame construction. The aerie expects to spend some \$20,000 in the erection and furnishing of the lodge home, and to erect and maintain the finest club in northwest Washington.

For some time the proposal to secure the property at the corner of Commercial and Sixth street and the erection of a club home, with business premises on the street floor, was under consideration, but so many difficulties were found to be in the way that the lodge Monday night decided to abandon the project and proceed with the building of a home on their own property selected for that purpose several years ago.

Anacortes Aerie now numbers some 250 members, and is one of the biggest lodges in the state, exceeded in northwest Washington in membership only by Bellingham but the officers say they get their new club built and furnished it will soon outnumber the Bellingham aerie in membership.

—American—



EAGLES HALL ANACORTES, W.N.













EAGLES HALL

MIRFIBRI

Handicapped parking sign

FORD

HYUNDAI



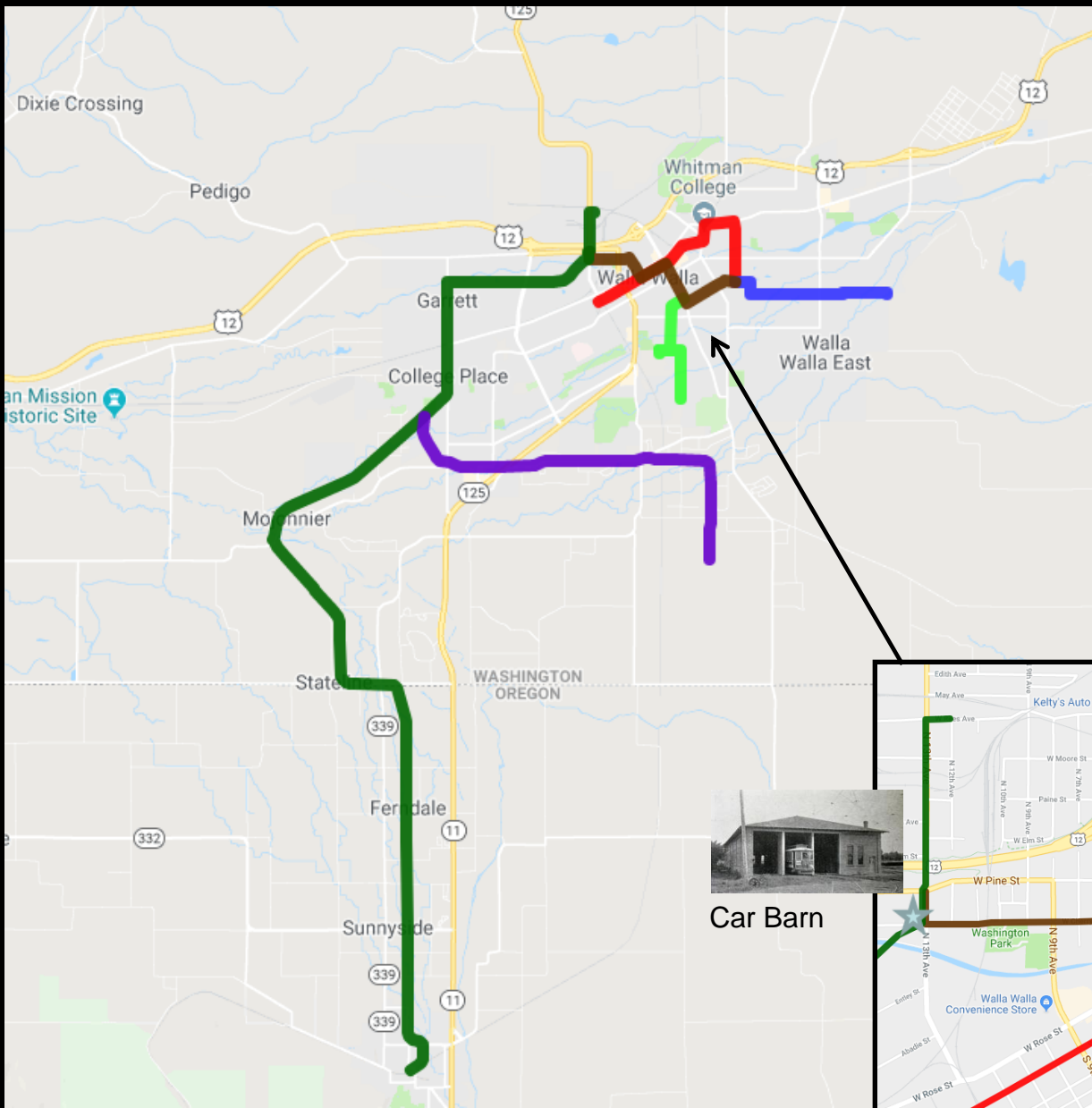
Bachtold Building / Interurban Depot









BRIDGEVILLE

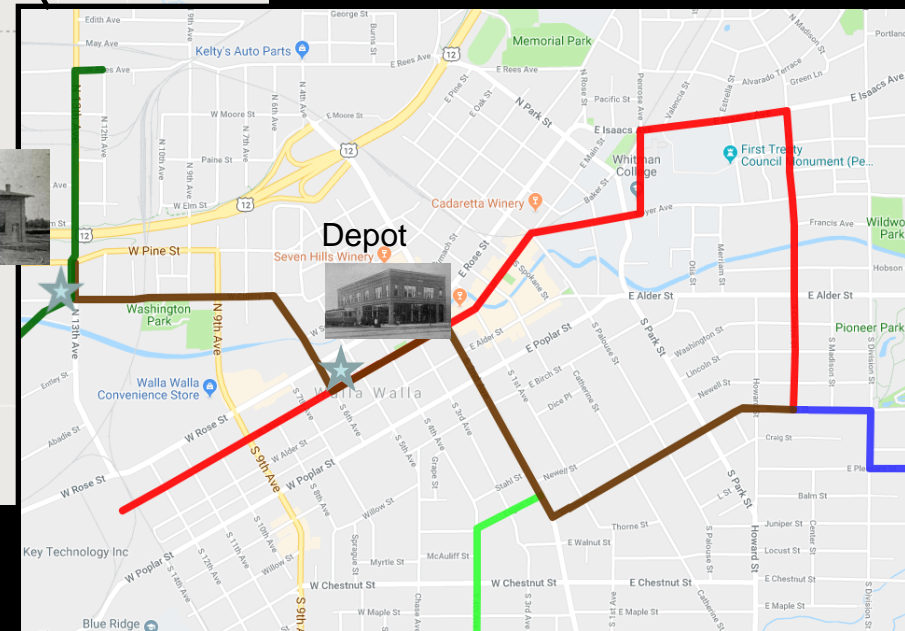
Saffron

Walla Walla Valley Traction Co. Lines



-  City Park Line
-  Fort Walla Walla Line
-  Prospect Heights Line
-  Track shared by multiple lines
-  Interurban to Freewater and Milton
-  Freight line to orchards

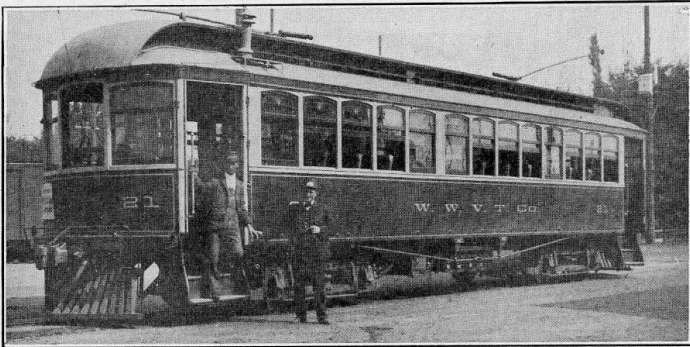
Detail of downtown area



Car Barn



Depot



Modern Interurban Cars of the Walla Walla Valley Traction Company

Ho! FOR A TROLLEY RIDE THROUGH THE COUNTRY BEAUTIFUL

Don't mope; stop paying the doctor all your money. Wake up! Shake yourself out of a rut. Get out more—get out and see the best part of the beautiful Walla Walla Valley when it looks the best—see its attractive orchards in bloom and arrayed in nature's fancy colors.

Give yourself, your friends or your family, a treat by taking them on a trip to the Freewater-Milton district on one of our modern and comfortable interurban cars. The trip we offer you is a pleasure excursion worth while.

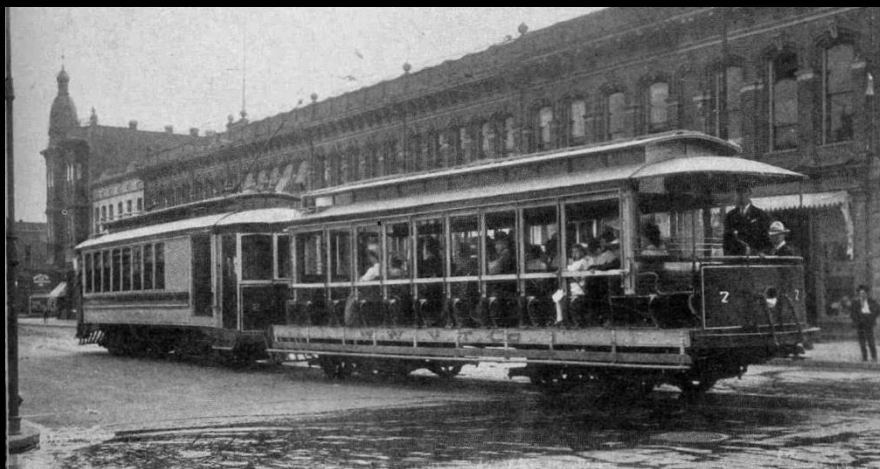
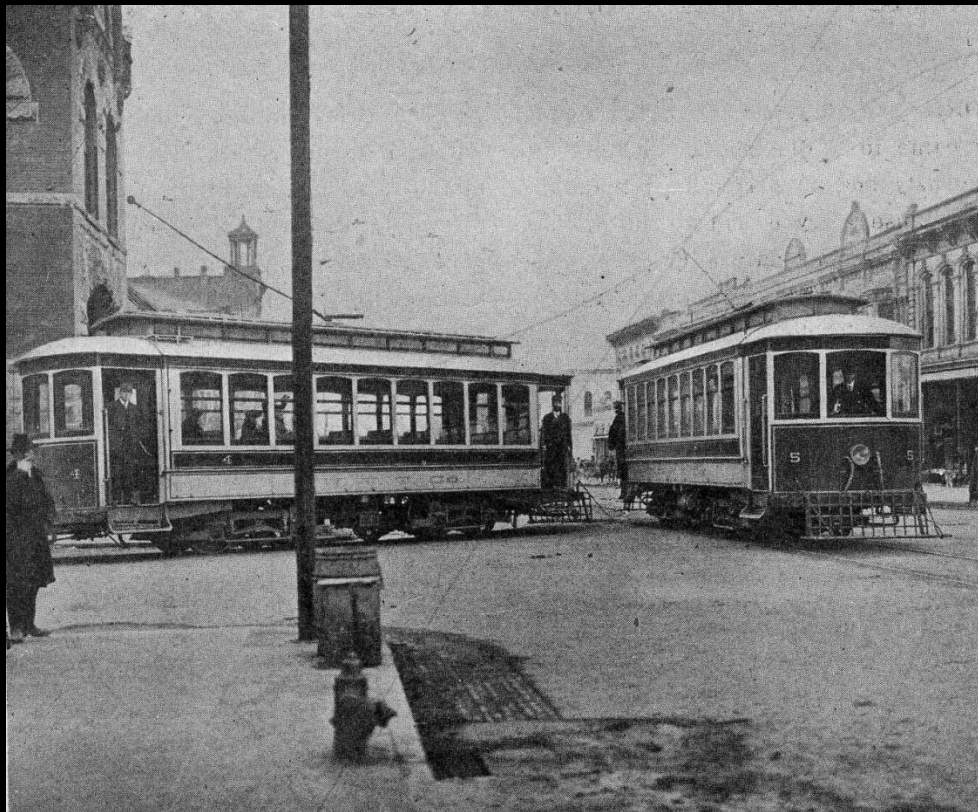
BIG 20-MILE RIDE
CARS EVERY HOUR

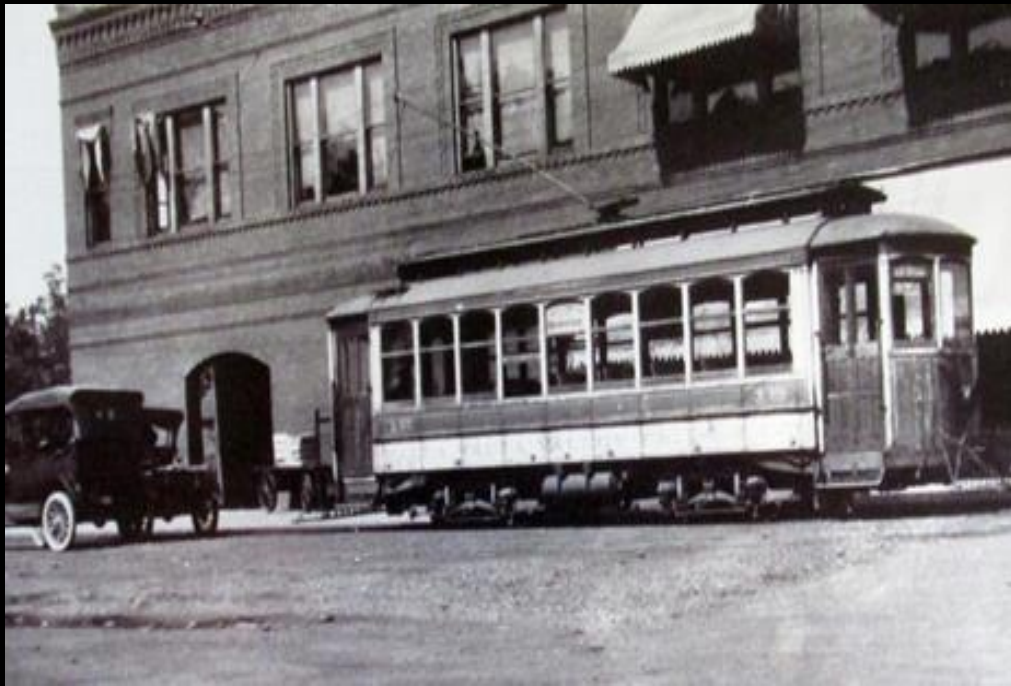
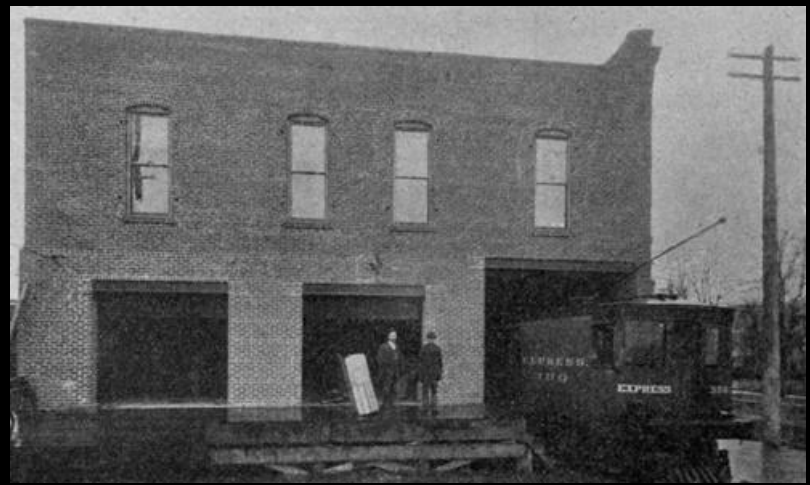
Tickets may be obtained at all our
our down-town offices

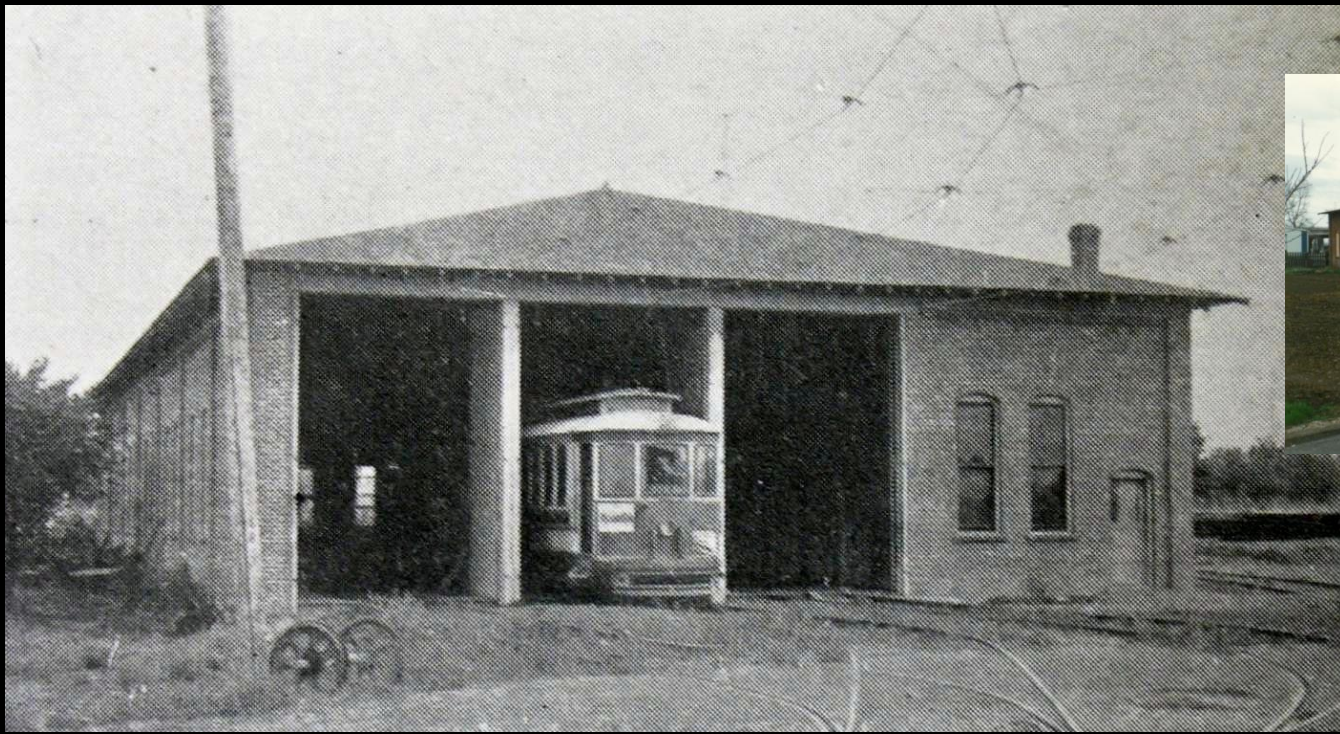
ROUND-TRIP

40c

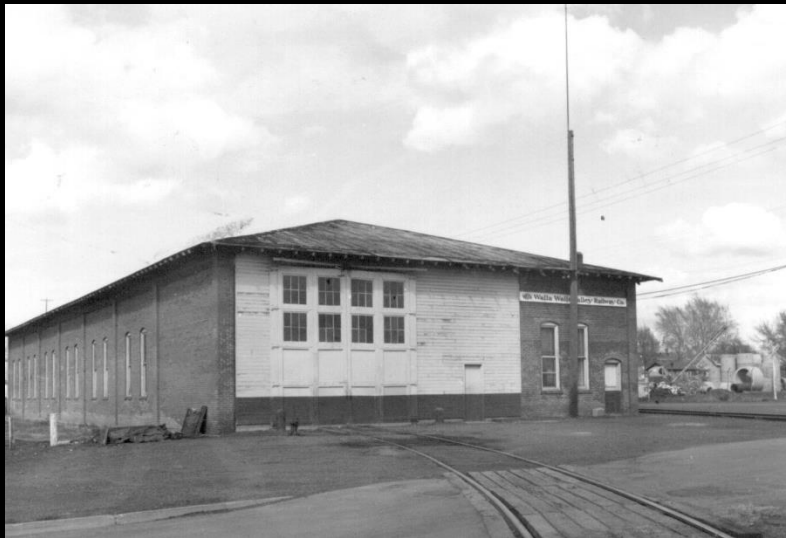
Walla Walla Valley Traction Co.



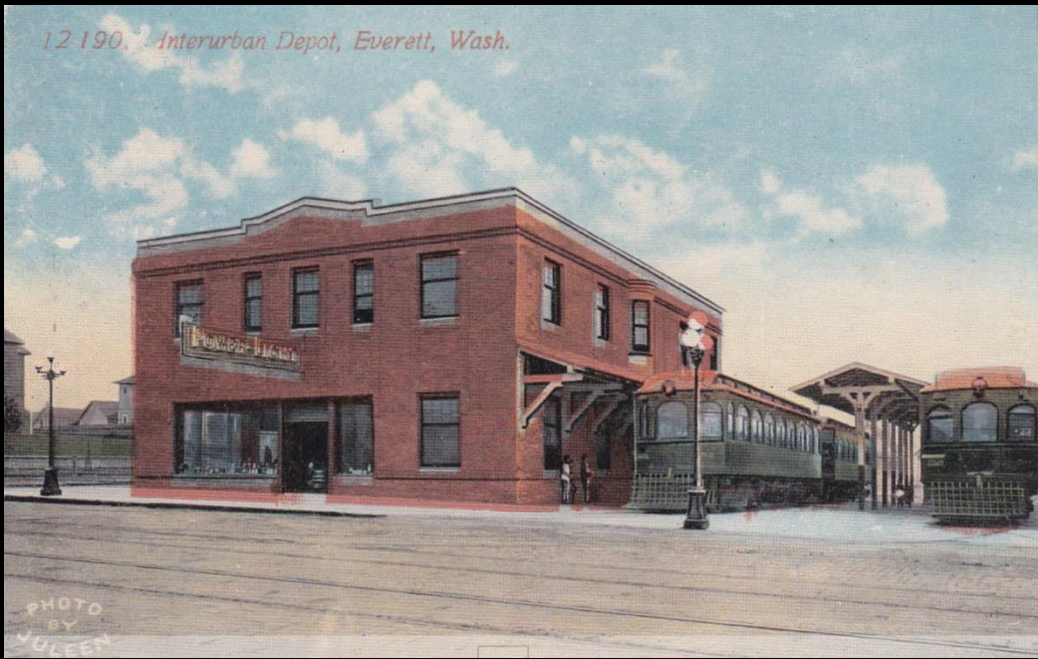




WWTC
Car Barn
NRHP - 1989



12 190. Interurban Depot, Everett, Wash.



Interurban Depot

Everett - 1911





ALF. BACHTOLD

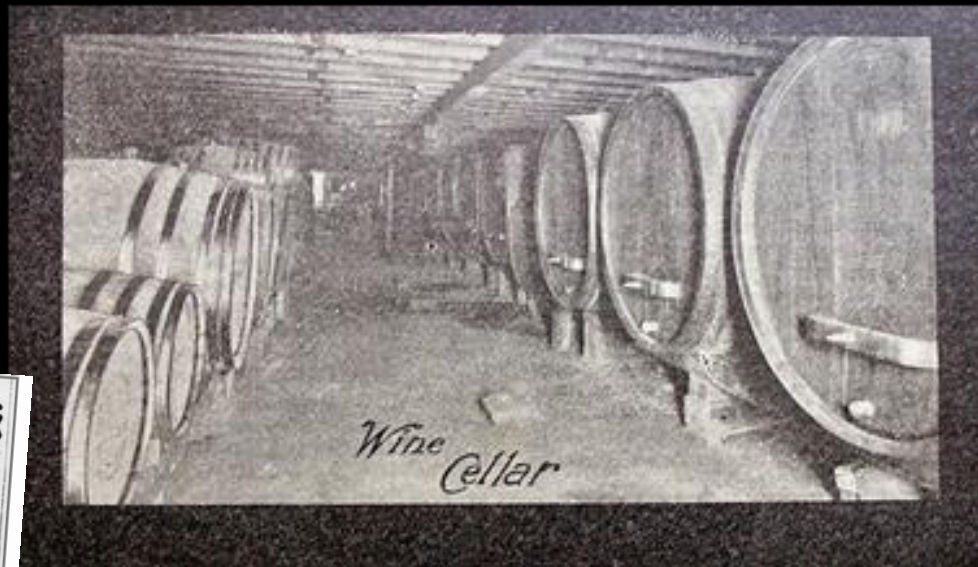
St. Louis
A·B·C
BEERS
 The Highest Priced but
 the Best Quality.
 Bachtold & Achermann.
 Wholesale Dealers.

A·B·C
BOHEMIAN
 "King of all Bottled Beers."
 Brewed from Bohemian Hops.
 Bachtold & Achermann.
 Wholesale Dealers.

How to Judge Beer
BRILLIANCY
 Clarity and polish, proving perfect brewing and fermentation.
 Brilliancy is always found in beer if the brewing and mashing has been properly conducted, and the fermentation of the brew completed under a careful and scientific regulation of temperature. No other beer made equals the famous
A. B. C.
 Bohemian in this quality of brilliancy. It is gained by the unremitting watchfulness bestowed upon each brewing and without the use of chemical preservatives, thus giving it exceptional purity and brilliancy.
 "The only beer bottled exclusively at the Brewery."
 THE AMERICAN BREWING CO.
 ST. LOUIS, U. S. A.
 BACHTOLD & ACKERMAN, Wholesale Dealers.
BACHTOLD & ACKERMAN, Wholesale Dealers

Bachtold & Achermann.
 SOLE AGENTS of the
SUTTER HOME VINEYARD WINES.
 Family Trade a Specialty.
 Office and Cellars in Basement of Dusenbery Building, Main St.,
 between Second and Third, Walla Walla, Wash.
 Goods delivered to all parts of the City.

BACHTOLD & ACKERMANN
Wholesale Liquor Merchants
 11 ALDER ST. : : PHONE MAIN 434













Spiritually Significant Rock Features of the South Columbia Basin & Okanogan Highlands MPD

45D01235

45D01236

45D01237

45D01238

45D01239

45D01240

45D01241

45D01242

45D01243

45D01244

45D01245

Washington State
**GOVERNOR'S
ADVISORY COUNCIL
ON HISTORIC
PRESERVATION**

171st Meeting – Seattle

