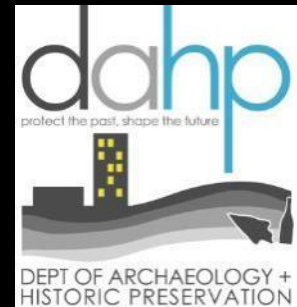




Washington State **GOVERNOR'S ADVISORY COUNCIL ON HISTORIC PRESERVATION**

171st Meeting – Seattle

Part 2





WA Co-Op Egg & Poultry Assoc. – Lakebay Station





**CO-OPS TO OPEN
NEW EGG STATION**

Lower Peninsula District to be Served at Lake Bay

By Staff Correspondent

LAKE BAY, Sept. 1.—Another station of the Washington Co-operative Egg and Poultry Association as a leader for the Tacoma Association was opened at Lake Bay Saturday afternoon with appropriate ceremonies and a big meeting of poultrymen at the new warehouse, which has just been completed.

A program in which S. D. Sanders, president of the association, will be the principal speaker, opened at 1:30 o'clock. R. E. Darling, manager of the Tacoma branch; A. A. Barker, the new manager of the Lake Bay station, and other association leaders, were all present.

Following the program, a big dinner will be served in the new building at 5 o'clock.

The association brought its first carload of feed to the new station Thursday, and it will formally open for business next Tuesday.

There are already 40,000 hens in this district that will contribute to the new station, and this number is expected to be largely increased with the improved facilities for handling the business.



EGG AND POULTRY DEALERS FORM ASSOCIATION

The Washington Cooperative Egg and Poultry Association was formally organized at a meeting held in a lecture room of the Seattle Chamber of Commerce and Commercial Club yesterday afternoon.

The object of the association, explained by James E. Mitchell, temporary secretary, is to standardize the price of eggs and to have a point from where all the eggs produced by the members can be distributed. Distribution of the eggs will be under the direction of a general manager to be chosen by the board of trustees.

The trustees elected yesterday include E. A. Polimeter of Seattle, A. Linklater of Puyallup, J. W. Langley, W. A. Bouman of Auburn, B. Holmes of Ferndale, W. G. Vashon, George W. Holt of Mount Vernon, and H. L. Willis of temporary chairman at yesterday's meeting.





Western Washington Fair, Puyallup, Wash. Sept. 13-19, 1926.











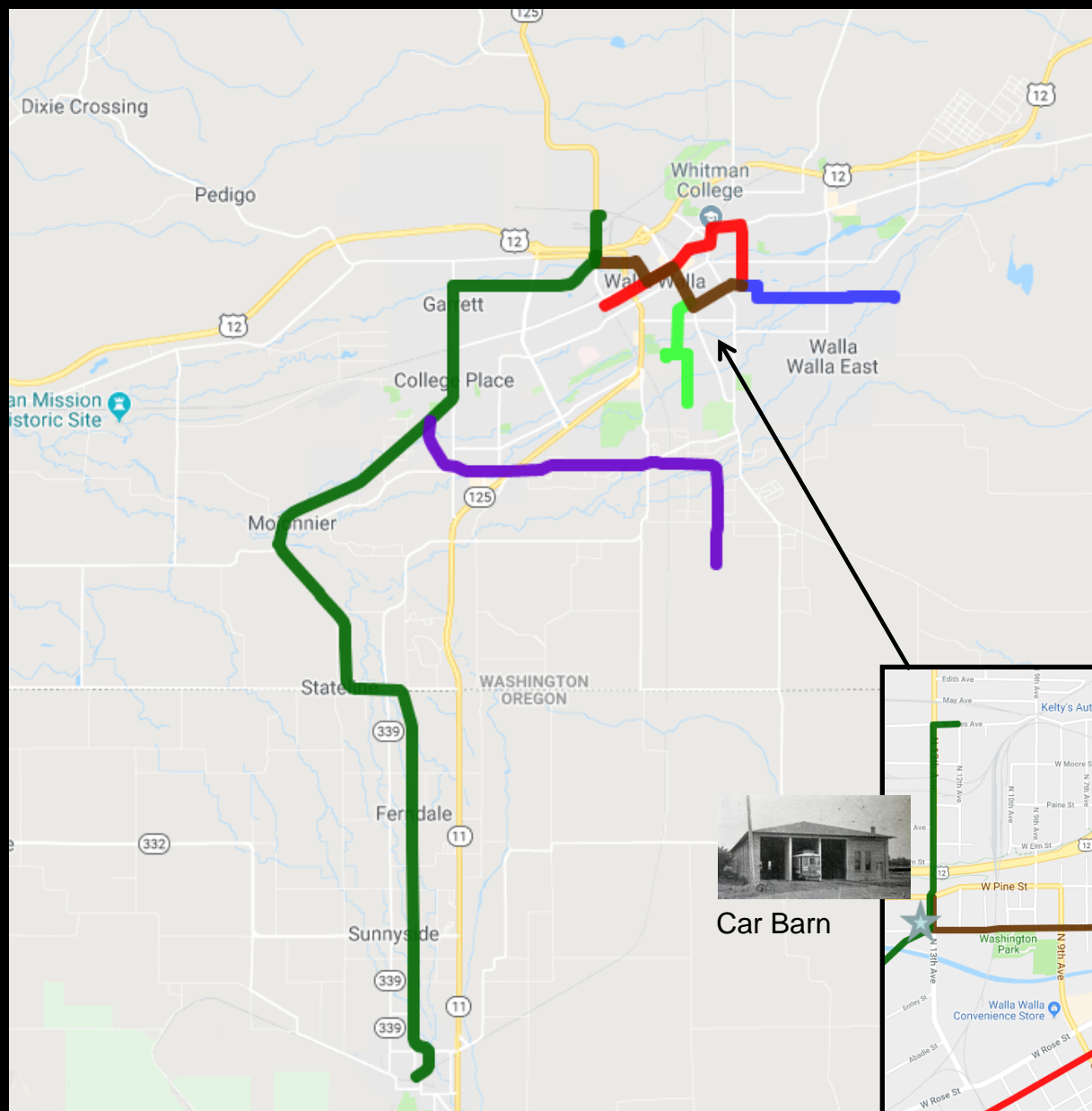










Bachtold Building / Interurban Depot



Walla Walla Valley Traction Co. Lines

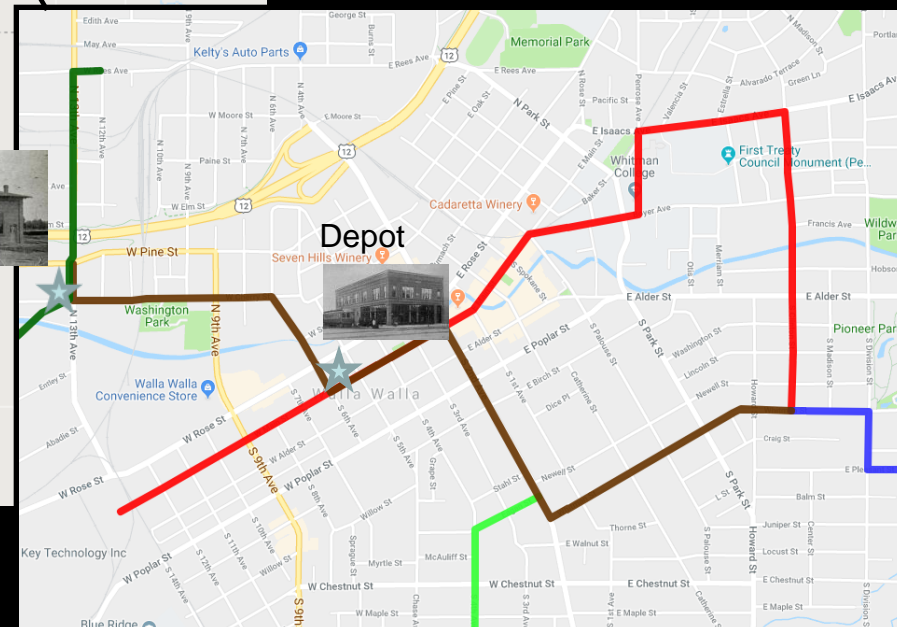


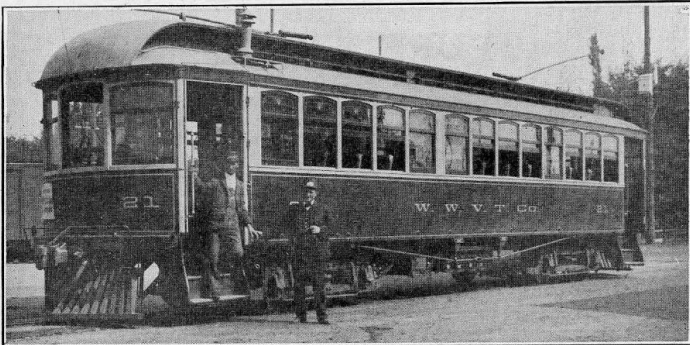
-  City Park Line
-  Fort Walla Walla Line
-  Prospect Heights Line
-  Track shared by multiple lines
-  Interurban to Freewater and Milton
-  Freight line to orchards

Detail of downtown area



Car Barn





Modern Interurban Cars of the Walla Walla Valley Traction Company

Ho! FOR A TROLLEY RIDE THROUGH THE COUNTRY BEAUTIFUL

Don't mope; stop paying the doctor all your money, Wake up! Shake yourself out of a rut. Get out more—get out and see the best part of the beautiful Walla Walla Valley when it looks the best—see its attractive orchards in bloom and arrayed in nature's fancy colors.

Give yourself, your friends or your family, a treat by taking them on a trip to the Freewater-Milton district on one of our modern and comfortable interurban cars. The trip we offer you is a pleasure excursion worth while.

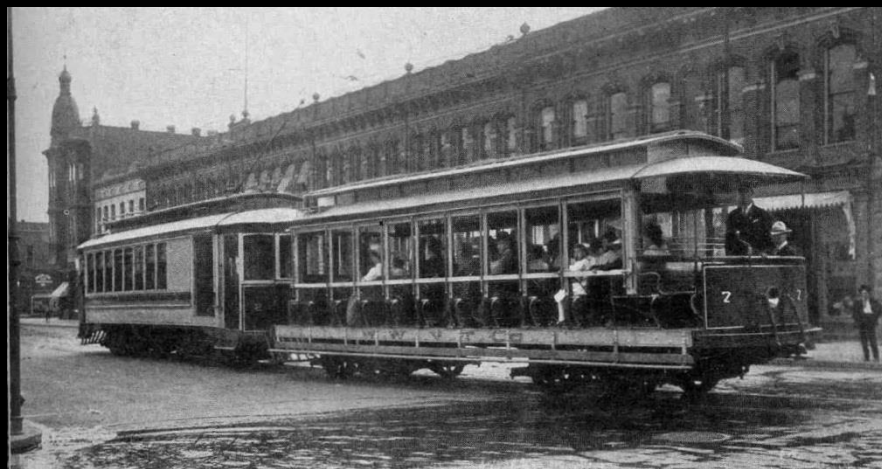
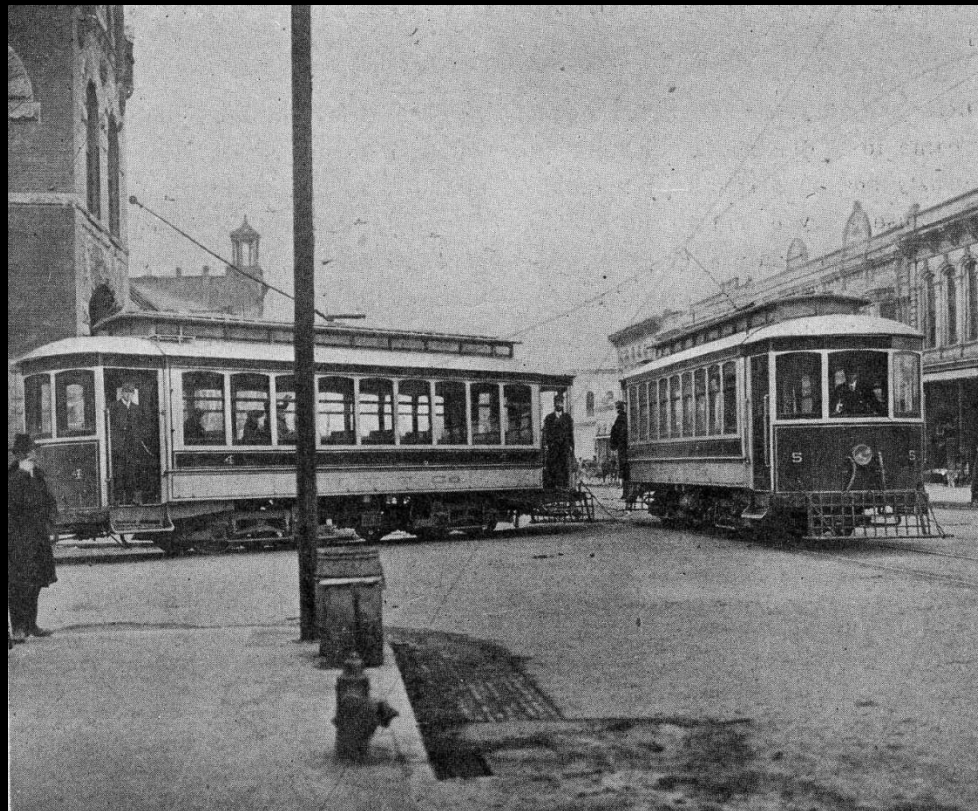
BIG 20-MILE RIDE
CARS EVERY HOUR

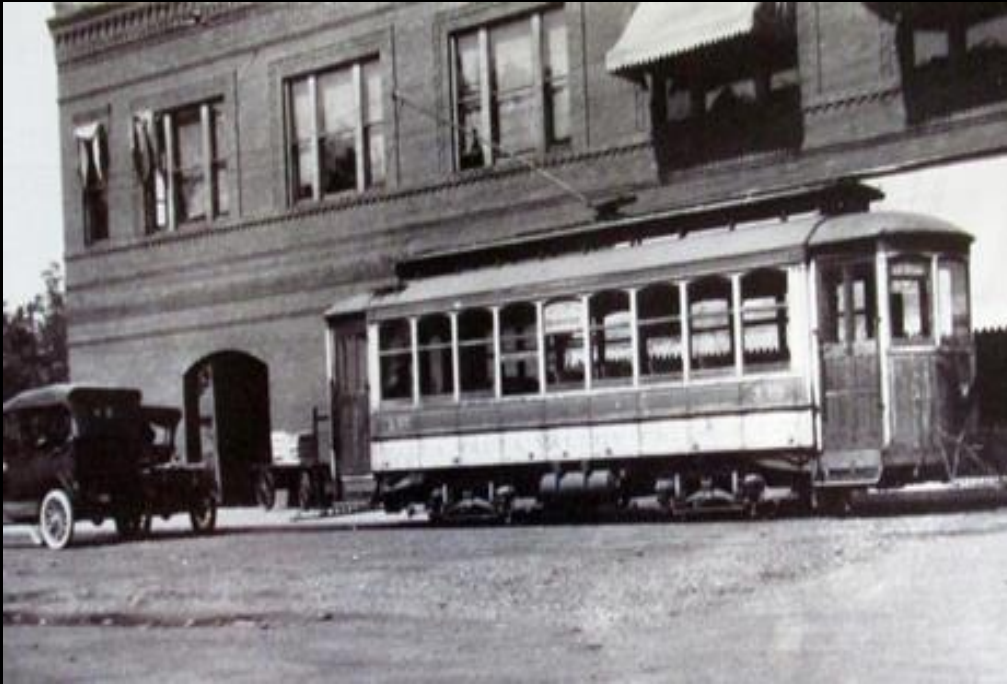
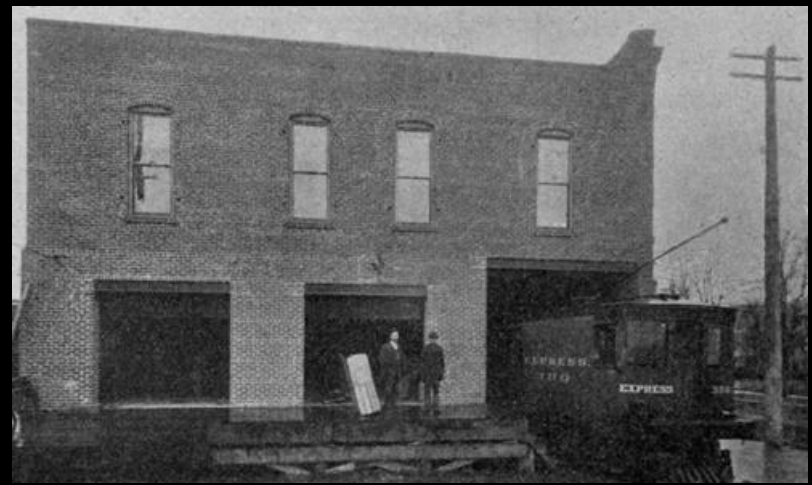
Tickets may be obtained at all our
our down-town offices

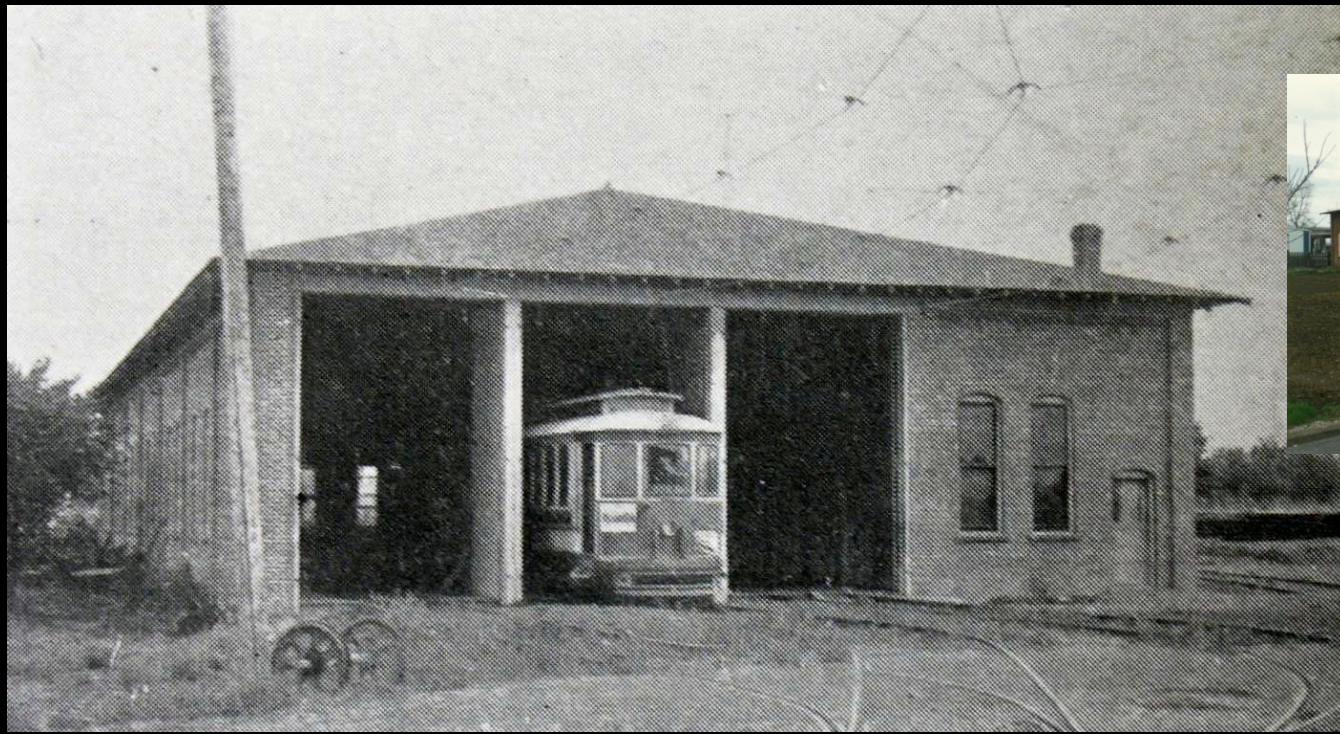
ROUND-TRIP

40c

Walla Walla Valley Traction Co.



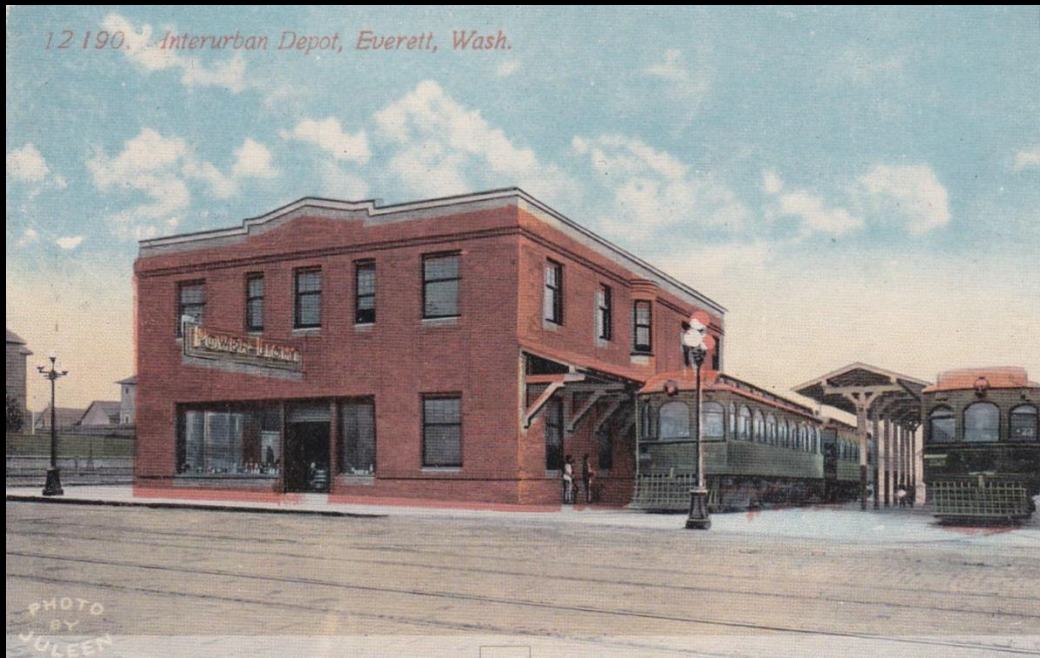




WWTC
Car Barn
NRHP - 1989



12 190. Interurban Depot, Everett, Wash.



Interurban Depot

Everett - 1911





ALF. BACHTOLD

St. Louis

A·B·C

BEERS

The Highest Priced but
the Best Quality.

Bachtold & Achermann.

Wholesale Dealers.

A·B·C

BOHEMIAN

"King of all Bottled Beers."
Brewed from Bohemian Hops.

Bachtold & Achermann.

Wholesale Dealers.

How to Judge Beer

BRILLIANCY

Clarity and polish, proving perfect brewing and fermentation.

Brilliancy is always found in beer if the brewing and mashing has been properly conducted, and the fermentation of the brew completed under a careful and scientific regulation of temperature. No other beer made equals the famous

A. B. C.

Bohemian in this quality of brilliancy. It is gained by the unremitting watchfulness bestowed upon each brewing, and without the use of chemical preservatives, thus giving it exceptional purity and brilliancy.

"The only beer bottled exclusively at the Brewery."

THE AMERICAN BREWING CO.
ST. LOUIS, U. S. A.

BACHTOLD & ACKERMAN, Wholesale Dealers.

BACHTOLD & ACKERMAN, Wholesale Dealers

Bachtold & Achermann.

SOLE AGENTS of the

SUTTER HOME VINEYARD WINES.

Family Trade a Specialty.

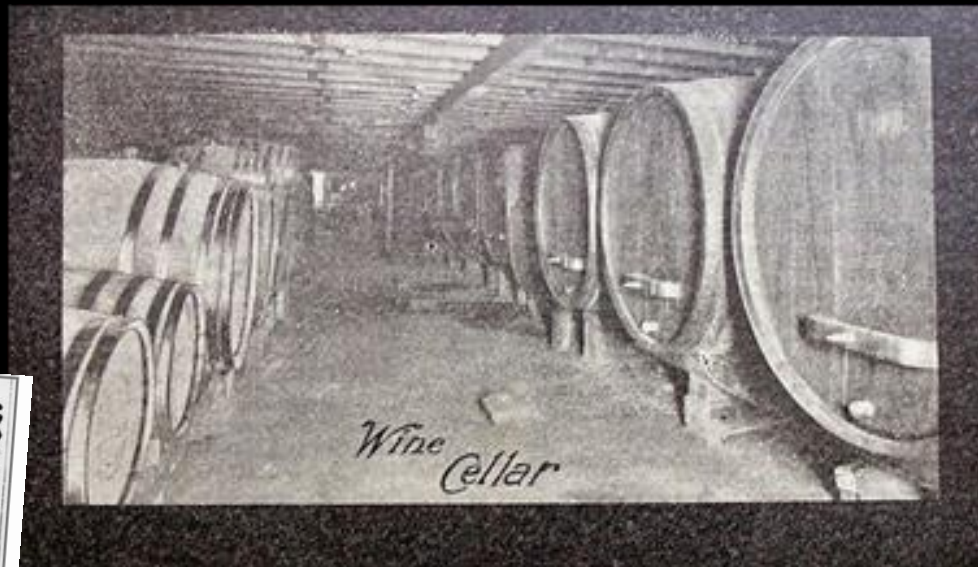
Office and Cellars in Basement of Dusenbery Building, Main St.,
between Second and Third, Walla Walla, Wash.

Goods delivered to all parts of the City.

BACHTOLD & ACKERMANN

Wholesale Liquor Merchants

11 ALDER ST. : : PHONE MAIN 434

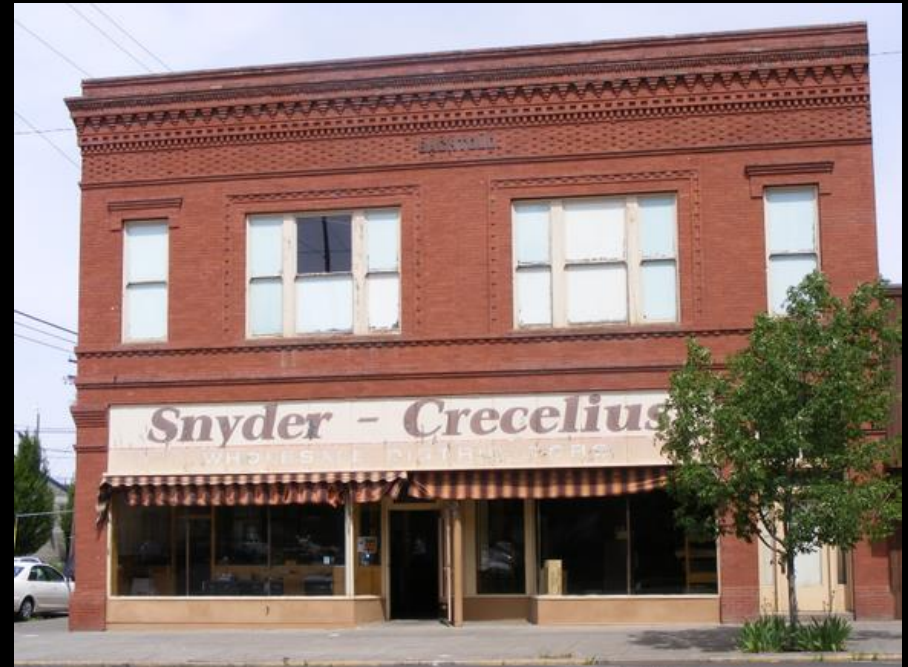














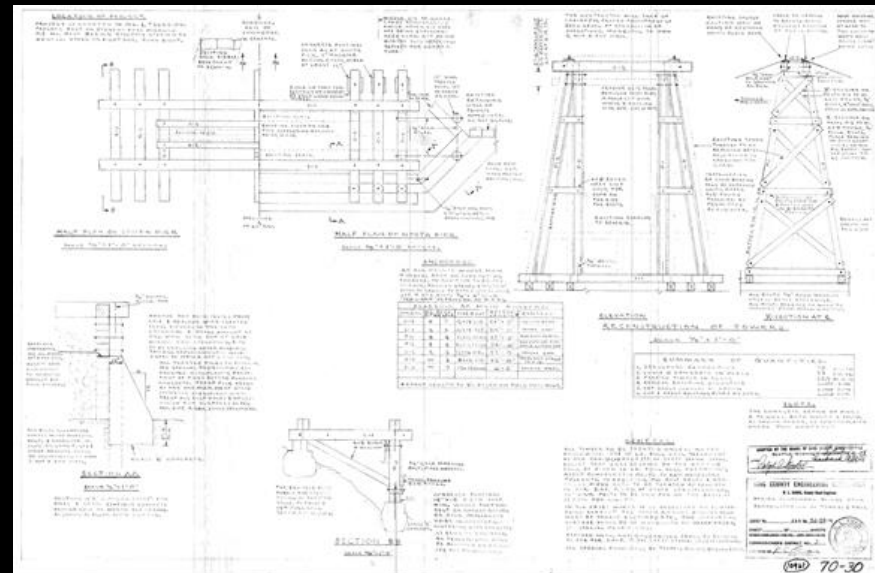
Baring Bridge





BARING GRANITE CO.
 J. DEMINICK, Manager
 DEALER IN FINE ROUGH AND DRESSED
GREY GRANITE
 Building Monuments and Street Curbing
 Quarry and Office - - **BARING, WASH.**

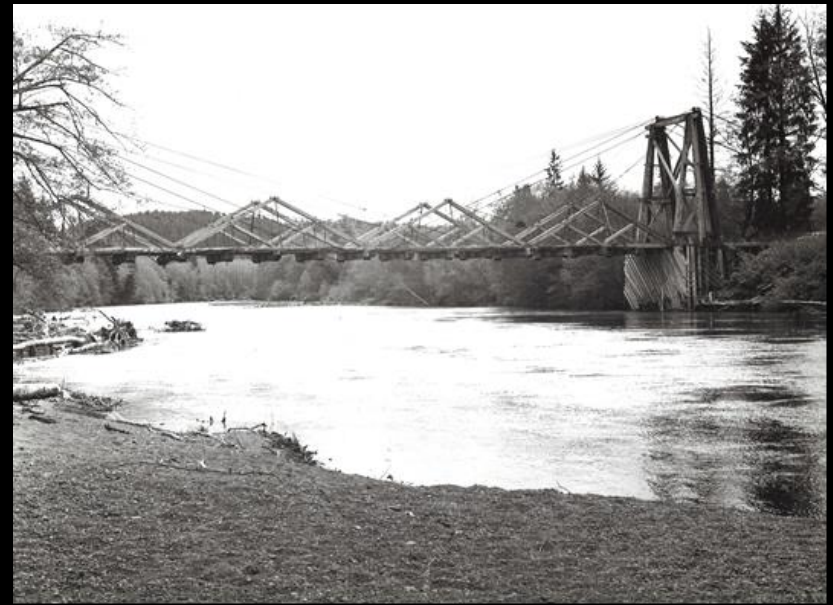








Otto Reining Pack Suspension Bridge



Chow Chow Bridge



Tarr Bridge



Clearwater Lumber Co. Bridge



Nisqually River
Suspension Bridge,
Mt. Rainier
1924 – Rebuilt 2005



John McDonald Park
Campground Suspension
Bridge, Carnation
1976





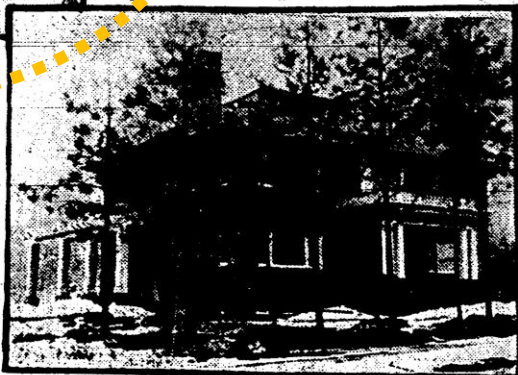
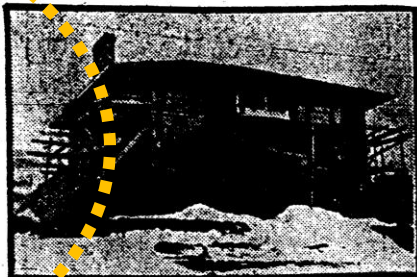
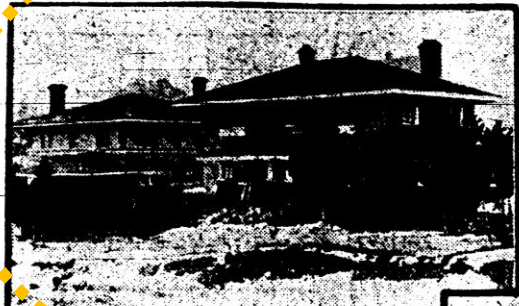




McMillen-Dyar House



Rockwood Homes Will Cost \$103,000



Residences Artistic.

The smaller, with the same rooms, will cost approximately \$15,000. Both will be hand-crafted in oak.

The house shown at the lower right is shown the house built by Henry Lydell boulevard between Sherman streets. It will have

11 rooms and will cost \$27,500.

At the lower right is the home which W. H. Plummer is building at Overbluff road and Rockwood boulevard. It will have 11 rooms and will cost, when completed, \$27,000.

The house shown at the lower left is the residence of Karl Berggren at the intersection of Rockwood and Highland boulevards. It is to have 10 rooms and will cost \$20,000.

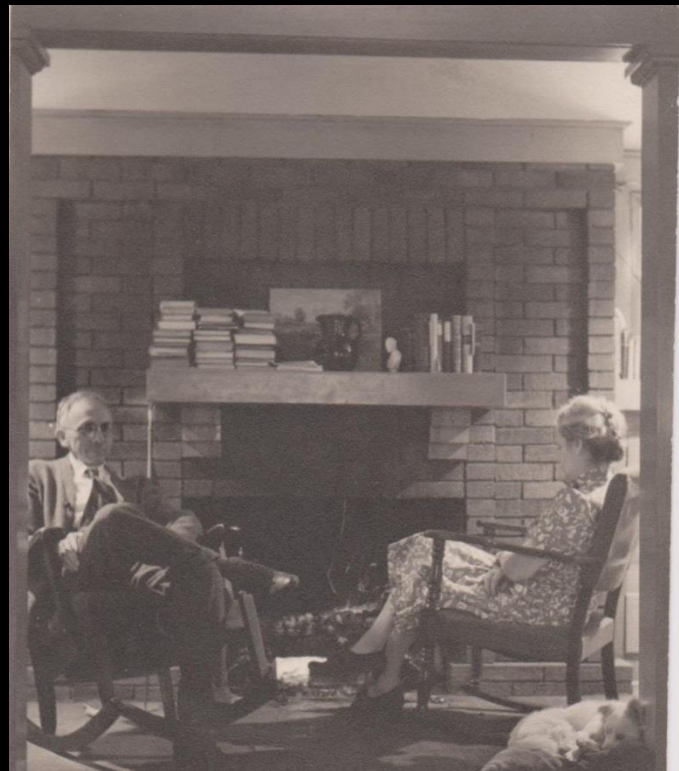
FINE RESIDENCE JUST COMPLETED

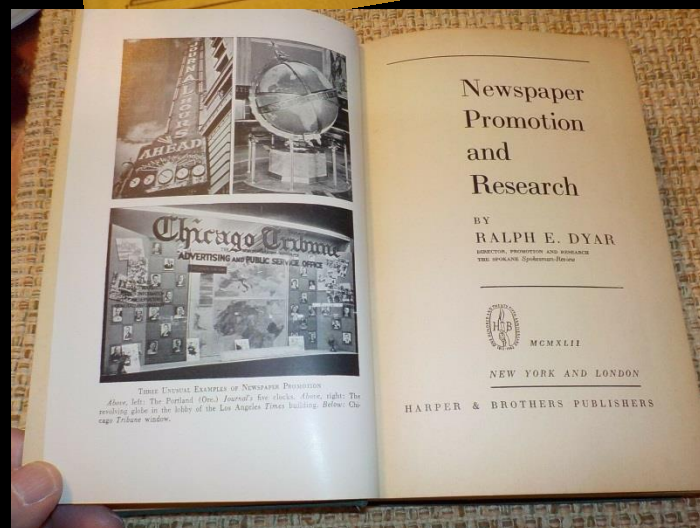
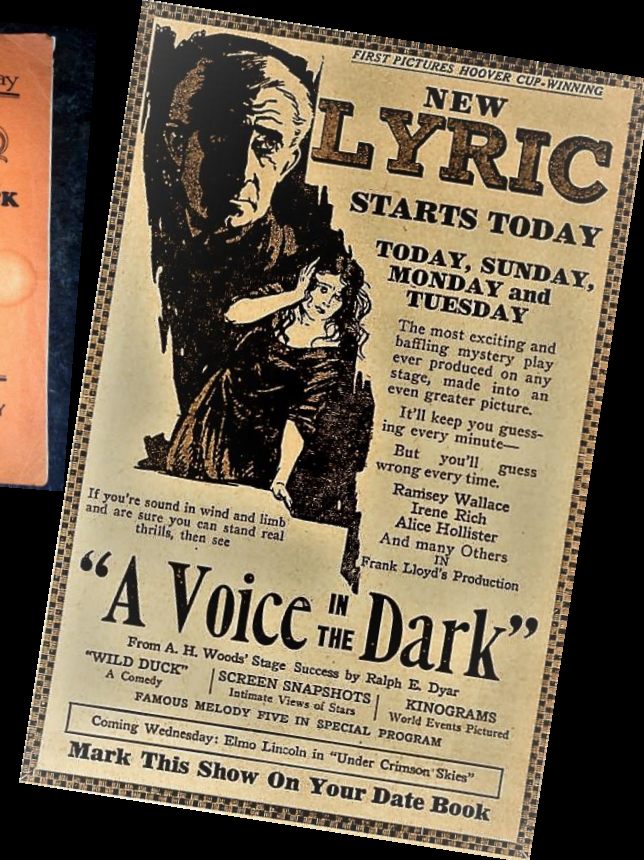
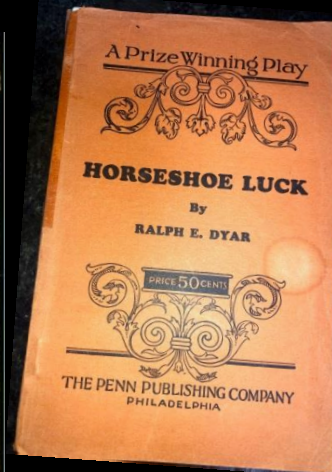
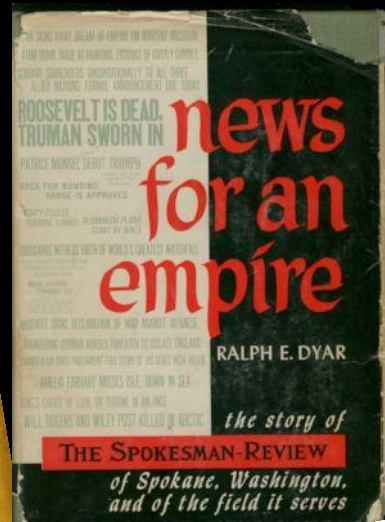
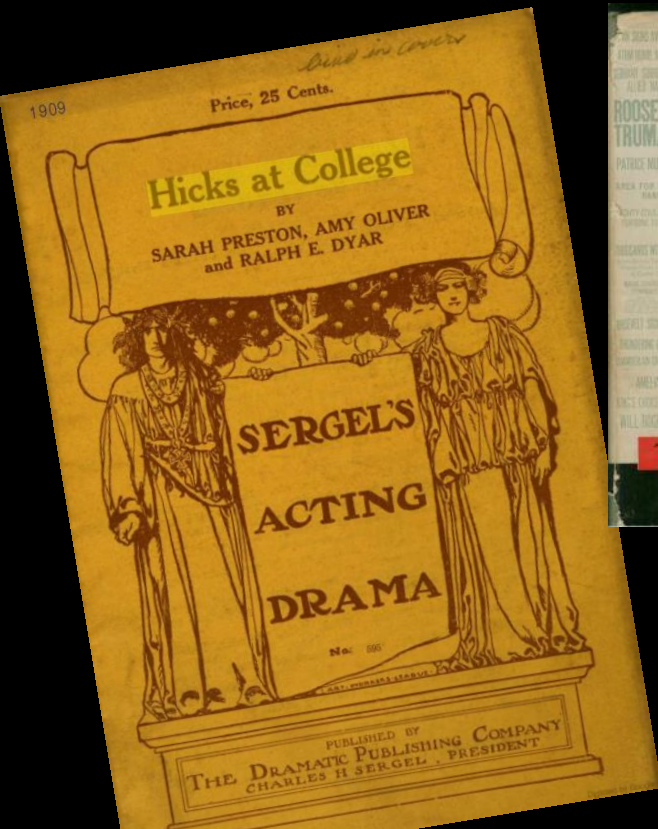
Lansdowne Invests Fifteen Thousand Dollars on Twelfth Avenue.

C. A. Lansdowne, well-known local builder, has just completed a beautiful new eight-room colonial residence in Rockwood, E326 Twelfth avenue. The place is replete with the latest modern conveniences and represents an investment of \$15,000.

Three floors are completely finished, the basement being fitted out with a large billiard room, which has an especially large mat finish brick fireplace. The first floor is finished in Tennessee white oak and the second in white enamel. The house has a complete electric vacuum cleaner system.

features abound throughout the house. The garage is decorated with







Franklin Manz

Other projects



Lindsay House – 532 E 12th Ave, 1912



Hart House – 1624 S Tacoma St, 1913



Lovell House – 911 E 20th Ave, 1913



Cunningham House – 1220 S Division St, 1911











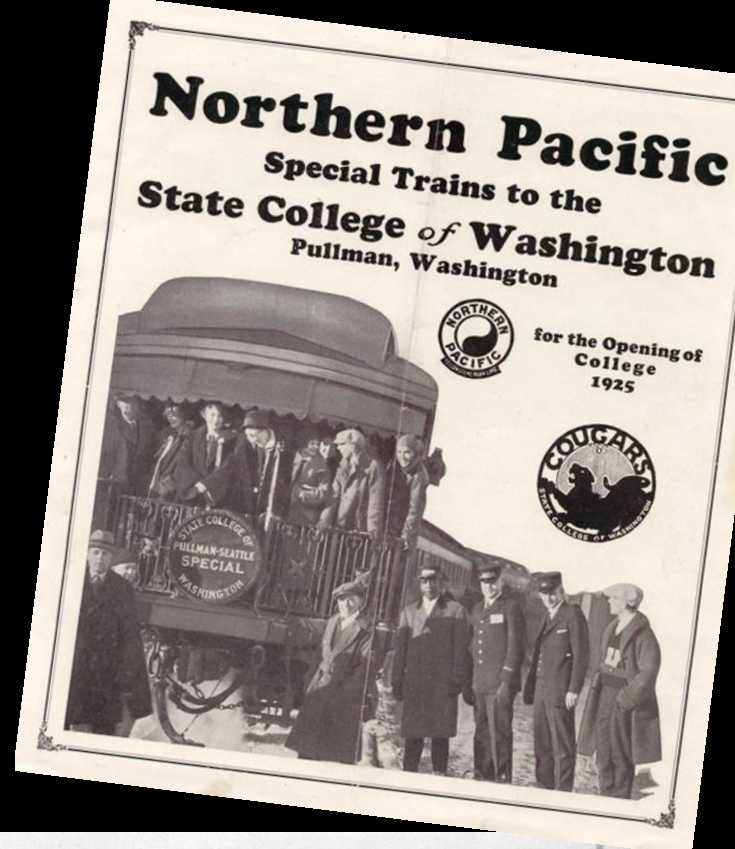




Northern Pacific Railway Depot

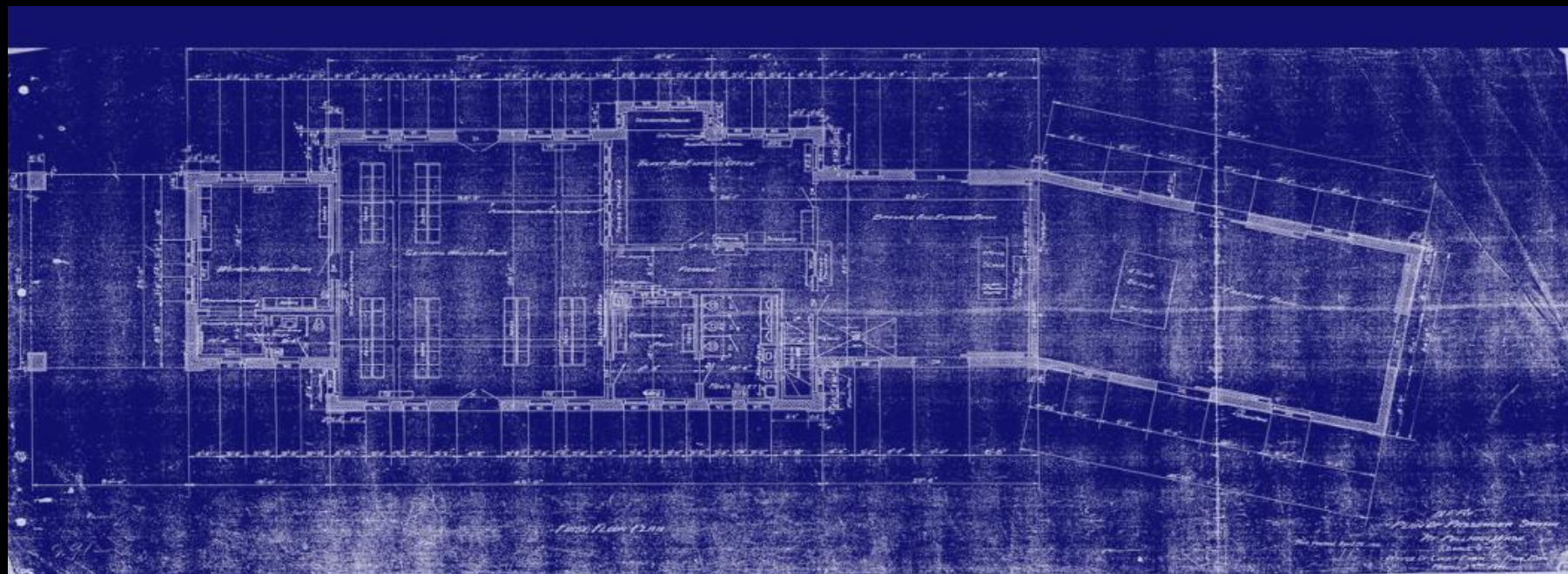
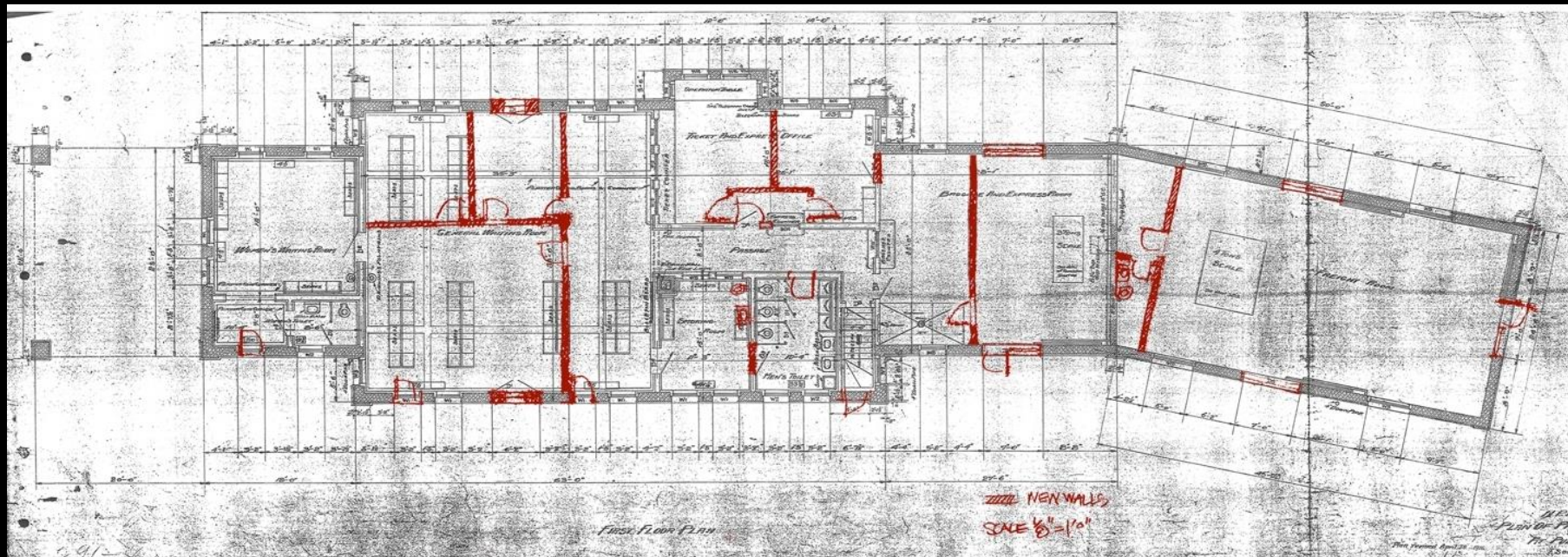








PULLMAN, WASHINGTON



















Downtown Ellensburg Historic District

Spiritually Significant Rock Features of the South Columbia Basin & Okanogan Highlands MPD

45D01235

45D01236

45D01237

45D01238

45D01239

45D01240

45D01241

45D01242

45D01243

45D01244

45D01245

Washington State

**GOVERNOR'S
ADVISORY COUNCIL
ON HISTORIC
PRESERVATION**

171st Meeting – Seattle

