

< Previous | Pages | Next >

1 of 2 matches



"E

## MODERN ELECTRICAL APPLI- ANCES DEMONSTRATED.

### Executive Committee Named to Have Charge of Exhibit Au- gust 25 to September 8.

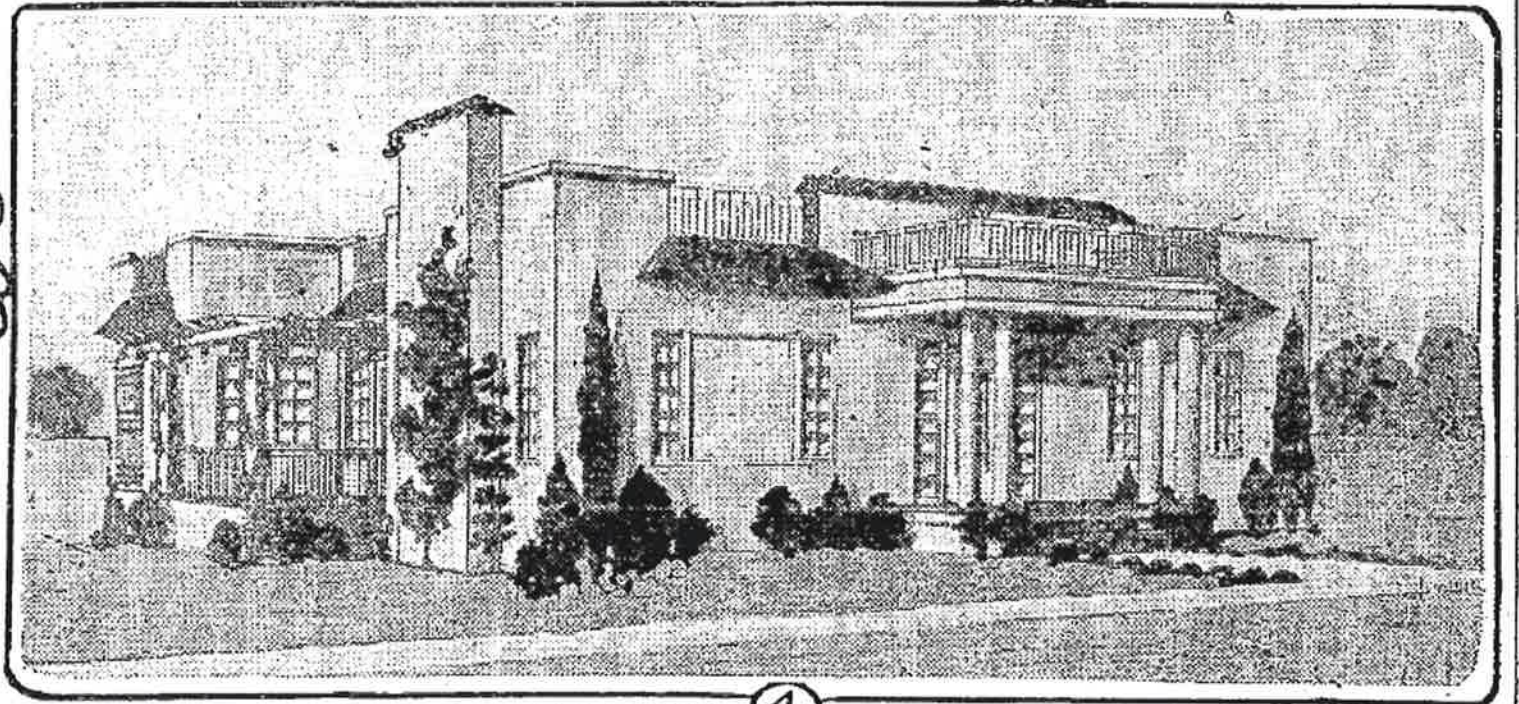
Electrical household appliances, featuring the most recent develop-ments along this line, will receive the attention of Seattle for a period of two weeks, commencing August 25 and ending September 8, according to rapidly maturing plans of the Elec-tric Club of Seattle for this city's third model **electric home**, which will be open for public inspection during this period.

The model **electric home** is located at 7527 Bothell Way, in the Univer-sity district, and is now nearing com-pletion under the personal supervi-sion of Gardner J. Gwinn of Gardner J. Gwinn, Inc., Hoge Building, who has the contract for its construction.

In addition to the home, the electric club is working out plans for an electrical household appliance exposi-tion to be held in conjunction with the home exhibit. Here it is purposed to show all kinds of electrical appliances and to demonstrate their manifold uses as applied to the modern home.

The following executive committee has been chosen from among members of the electric club to superintend plans for this year's exposition: W. H. Meacham, chairman; C. H. Birkel, Harry Byrne, L. R. Grant, B. E. Mc-Cain, R. G. Reiniger, J. D. Ross, S. R. Russell and J. R. Wells.

MS



4

ST. AUG 5, 1923