

MICHAEL HOUSER
STATE ARCHITECTURAL HISTORIAN



THE 1970S TURN

AUG 2021







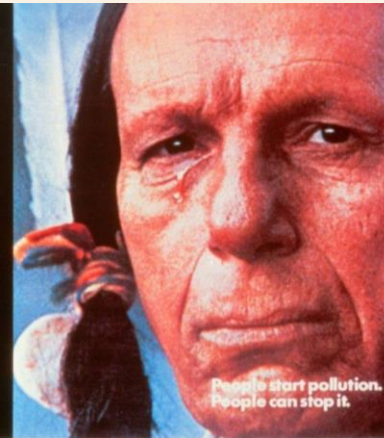
HOUSER FAMILY - 1975

THE ENVIRONMENTAL MOVEMENT



GET INVOLVED NOW. POLLUTION HURTS ALL OF US.

You can help by becoming a community volunteer. Write:
Keep America Beautiful, Inc.
99 Park Avenue, New York, New York 10016
A Public Service of Transit Advertising & The Advertising Council. **Ad COUNCIL**



People start pollution. People can stop it.



THE ANTI-WAR MOVEMENT



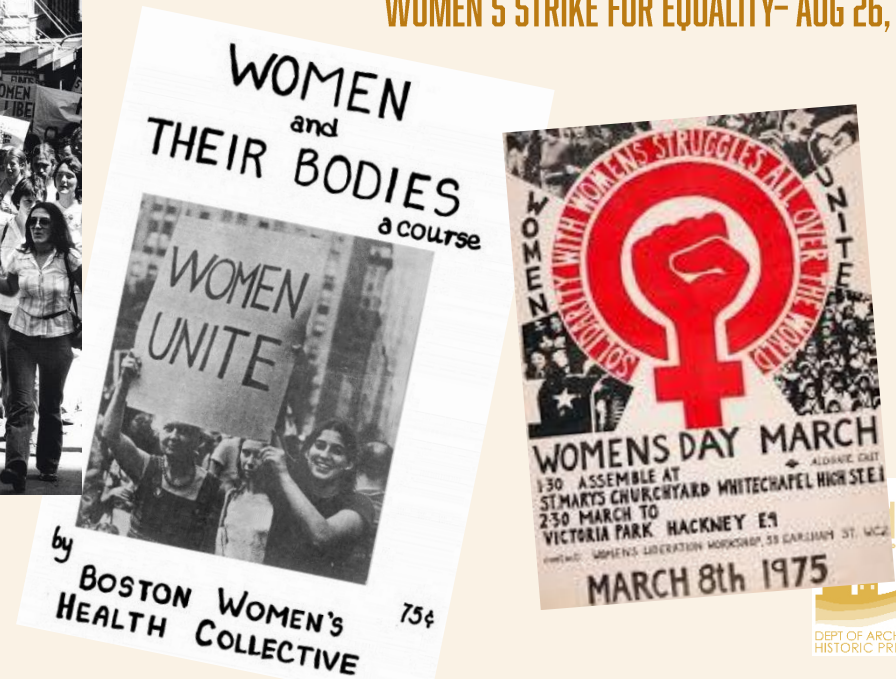
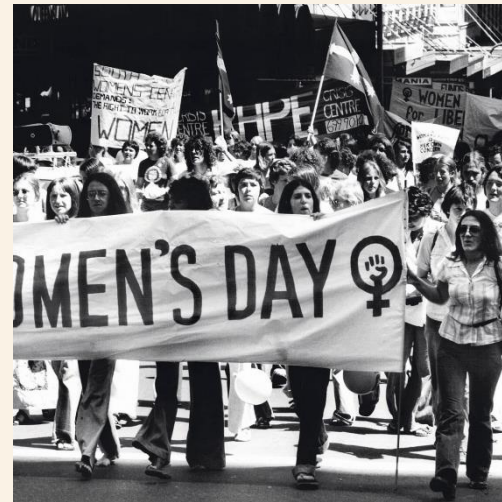
FIGHTING FOR WOMEN'S RIGHTS



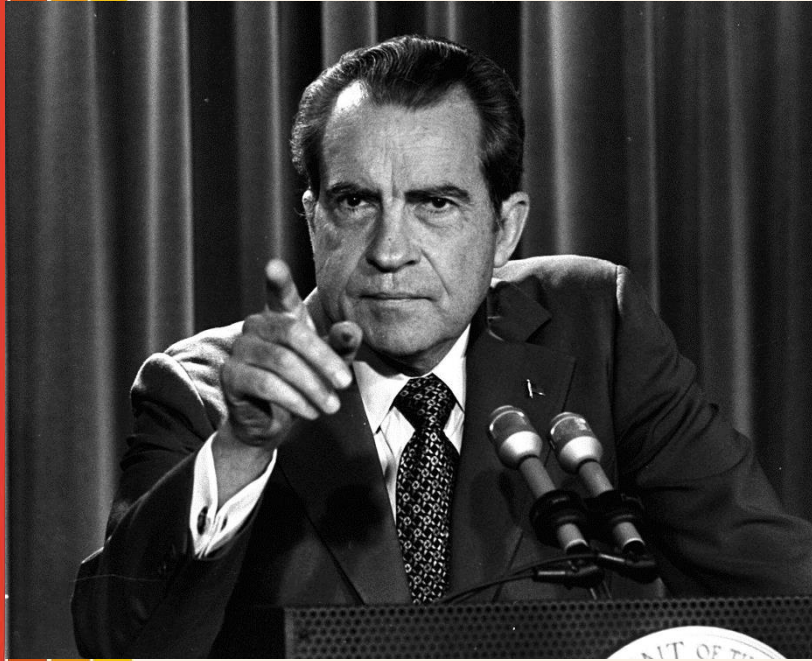
GLORIA STEINEM, FEMINIST ACTIVIST - 1977



WOMEN'S STRIKE FOR EQUALITY- AUG 26, 1970



THE CONSERVATIVE BACKLASH



PRESIDENT RICHARD NIXON



JERRY FALWELL, FOUNDER OF MORAL MAJORITY - 1979



ACTIVIST PHYLLIS SCHAFLY

CATO
INSTITUTE

Individual Liberty, Free Markets, and Peace

The
Heritage Foundation
LEADERSHIP FOR AMERICA

BEVERLY LAHAYE,
PRESIDENT OF CONCERNED
WOMEN FOR AMERICA -
C.1978



ROE VS. WADE - 1973

THE WATERGATE SCANDAL



**NIXON RESIGNED
- AUGUST 9, 1974**

WATERGATE BUILDING - DEMOCRATIC NATIONAL COMMITTEE HEADQUARTERS



**WASHINGTON POST
REPORTERS BOB
WOODWARD AND CARL
BERNSTEIN**

FASHION

2-Pc. Polyester Knit Pants Sets are knock-outs for Spring

Choose all knit outfits

- Available in colors: white, red, blue
- Available in sizes: 34-42 waist, 28-34 length
- Knit fabric with long sleeves and contrasting color piping and contrasting color pocket flaps
- Knit sets imported from Canada

Great Weekend Accessories

Click Americana

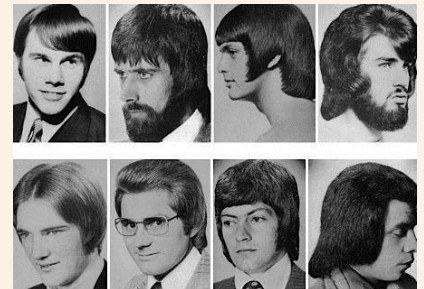


Sears The Mens Store

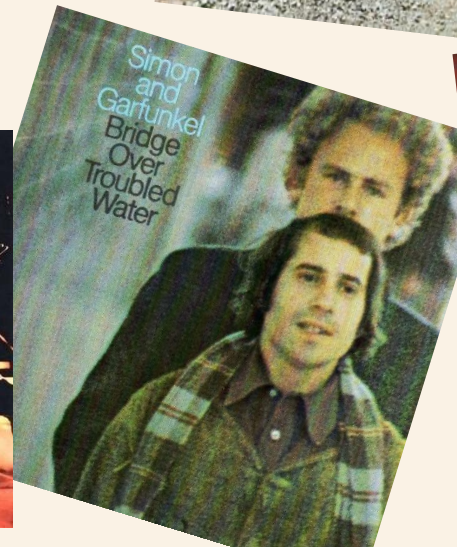
For whom the bells toll.

his

Ask not. They're for you. Our swinging belts have an ultra-slim fit, low rise and come in a ring-a-ding assortment of colors and fabrics. They're definitely becoming a novel American great. Talon zipper, \$5 to \$12. Apache shirts from \$5. Shoes from \$12. Higher in West.




MUSIC




AUTOMOBILES

Falcon's Grand Sport Rally Pack: 145 dollars and you look like a million!



For looks: Glistening chrome sports wheel covers, G.S. Rally Stripes sweeping to the covers, G.S. Rally Pack, a sports world special "G.S." badge. For driving: a sports world special "G.S." badge, wood-grained sports steering wheel, a fully instrumented cockpit with tachometer, oil, temperature and speedometer, and an electric clock. For performance: a 200 or 250 CID V-8 or 302 or 351 CID V-8 engines with automatic or manual transmission, bench or bucket seating. The Falcon G.S. Rally Pack - a million dollar grand sport feeling for only 145 dollars. Order it with the Falcon of your choice - at your Ford Dealer's store. Going Ford is the going thing!

FALCON 

Riviera rides again.



1977 BUICK RIVIERA. Fourteen years ago, we came out with a very special Buick. It was an automobile designed to live in two different worlds - the luxury car, that of the road car. We called it Riviera and it lived. We created a classic. This is the Riviera 14 years later. Refinements abound. But the philosophy is the same. The 1977 Riviera may surround you with elegance and luxury, but it is still a driver's car. Its smooth, quiet ride is coupled with an ability to be tough in the corners. To respond with precision. To give its driver a sense of the road. The standard suspension system includes front and rear stabilizer bars. And special shock absorbers. And for even better ride control, there's an optional ride and handling package that includes firmer shocks and springs and a larger rear stabilizer bar. Other driving assists include power steering. Which you manipulate with a leather-covered steering wheel. If you so order. And you can order disc brakes at all four wheels - a feature that you'll find on the most exotic European touring and racing cars.

The standard engine is a 5.7 liter (350 CID) V-8. Or you can order a new 5.8 liter (403 CID) V-8. Riviera is a most satisfyingly elegant and luxurious automobile. For instance, while Riviera satisfies a serious driver's demand for agility, it also has more front and rear headroom than last year. And more rear legroom. (Not to mention more trunk room.) There's even 50/50 front seating with twin armrests. Rich velour fabrics. And a highly functional instrument panel. The 1977 Riviera is a very special automobile. Because it carries on a very special tradition. Something you'll never really grasp, until you get that available leather steering wheel in your own two hands and take a Riviera out into the real world.

BUICK
Free Spirit in just about everyone.



BUICK RIVIERA - 1977

There's a Firebird for every purpose. Except standing still.



Esprit offers luxury that doesn't get in the way of speed, individually customized buckets of simple vinyl. A rosewood-trimmed accented dash. A four-spoke steering wheel. Plus an available "Shy Bird" Package with blue leather, matching wheels, and special trim throughout. Formula Firebird is for people who are driven by a love of driving. Who are forever inspired by dual simulated air scoops atop a 5.0 liter V-8. Who can appreciate stabilizer bars and steel-belt buckles. Firebird. Buckle up to the ultimate overcaching, head-busting, heart-pounding, awe-inspiring legend. A lot of it has to do with the air dam. The striking bird available for the hood. And the 6.6 liter V-8 underhood. Even the base Firebird has a lot of it has to do with the air dam. The striking bird available for the hood. And the GM built engines produced by various divisions. Your dealer has whatever you like to do. Unless you like something still. Pontiac. The Mark of Great Cars.

1978 Pontiac's best year yet!

PONTIAC FIREBIRD - 1978



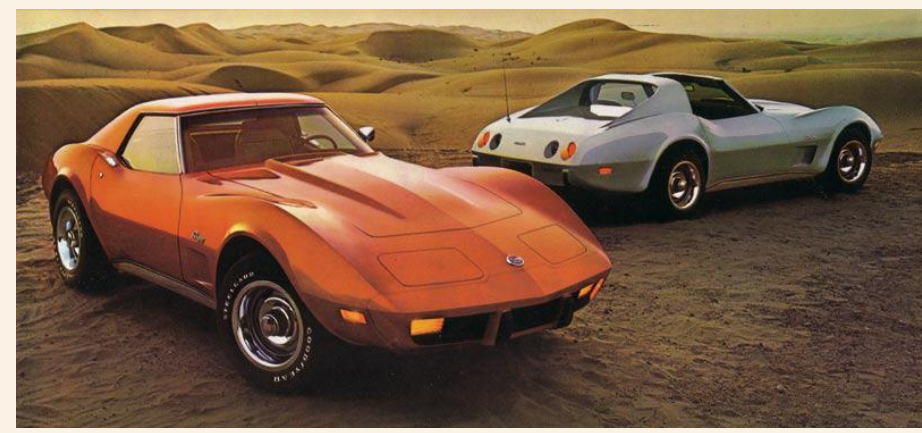
You don't stay a champion by resting on your laurels.



Introducing the Triumph Spitfire 1500.

Win after win. Race after race. 30 times last year the Triumph Spitfire showed the world what a champion sports car is made of. This was last year. And this year we have even bigger things in mind. And better. This year's Spitfire has more engine power. And to give you an even sportier sports car for your money, this year's Spitfire comes with a new racing style steering wheel, wider dash and adjustable headrests, not to mention other less obvious, but significant improvements. We know you don't stay a champion by resting on your laurels. You'll know it too, the moment you test drive the new Spitfire 1500.  **Triumph Spitfire 1500** We make sports cars for everybody. FOR NAME OF YOUR NEAREST TRIUMPH DEALER CALL 800-443-4700. OR IN FLORIDA CALL 800-352-8462. BRIGHT STARLAND MOTOR INC., LEONIA, N.J. 07033. www.triumph.com

1973



CORVETTE - 1976

1973

AUTOMOBILES



Levi's Gremlin, with seats of the pants

Now a Gremlin with upholstery that's like blue denim Levi's: Has orange stitching, the buttons, even the famous Levi's tab on both front seats. Everything else on the car is pure Gremlin. You get the same fun styling. That quiet six cylinder engine. More width and weight than all other little economy cars. True to the American Motors Buyer Protection Plan, both Gremlin and its Levi's are guaranteed* for one year or 12,000 miles. Levi's Gremlin. The economy car that wears the pants.

Buckle up for safety.

AMERICAN MOTORS BUYER PROTECTION PLAN

*If you buy a new 1975 car from an American Motors dealer, it will be covered by the American Motors Buyer Protection Plan for one year or 12,000 miles, whichever comes first. The car must be properly maintained and used for the intended purpose. Excludes fleet, rental, lease, and other special use applications. See your dealer for details. A free repair car from almost every one of our 1,000 authorized dealers across the U.S. These same dealers guarantee a network of service departments with Toyota trained mechanics. This new generation of Toyota Corollas. You can find a better buy small car than a Toyota. Stop!

AMC Gremlin
We back them better because we build them better.

1972

New Ford Pinto MPG

34mpg. \$2,769.*

A high mileage rating at a lower sticker price than Beetle, Toyota Corona, Datsun 710 (and a whole lot of other foreign cars).

U.S. Government EPA dynamometer test. 34mpg highway. 23mpg city. *Base sticker price excluding title, taxes, destination, dealer prep and optional WSW tires (\$30).

And you don't have to buy extra cost options for Pinto's higher mileage like you do with Vega. Did you know that?

America's best-selling subcompact economy car has three new models that give you the advantage of improved EPA mileage. 34 miles per gallon highway, 23 city, 30 mpg. 34 miles per gallon highway, 23 city, 30 mpg. 34 miles per gallon highway, 23 city, 30 mpg.

FORD PINTO

Pinto MPG mileage rating	City	Highway
4-speed floor-mounted stick, over-land cast 2.3 liter engine with solid state ignition, floor, disc brakes and more. And more. AMC comes with the same number of features. Includes side, door, floor, protective bumpers and others.	23	34
4-speed automatic, over-land cast 2.3 liter engine with solid state ignition, floor, disc brakes and more. And more. AMC comes with the same number of features. Includes side, door, floor, protective bumpers and others.	21	32
4-speed automatic, over-land cast 2.3 liter engine with solid state ignition, floor, disc brakes and more. And more. AMC comes with the same number of features. Includes side, door, floor, protective bumpers and others.	21	32

See your local Ford Dealer.

QUALITY.

Quality in a small car. What does this mean to you? To Toyota it means an automobile that's inexpensive, not cheap. The new generation of Toyota Corollas are built with quality. The proof? 9 out of 10 Toyota cars sold in this country since 1958 are still on the road today. Quality You asked for. You got it. Toyota.

Quality is durability and how a car handles the road. Power-assisted front disc brakes help you maintain control. MacPherson and front suspension help keep the ride smooth and quiet. Reinforced wheel and body welded construction helps keep the Corolla tight and virtually rattle free.

Toyota's quality is in a new, not one car. No matter what your space needs you'll find it in one of ten Corollas: the Harrier, 2-Door Sedan, 3-Door Coupe, Deluxe Sedan, 5-Door Waggon, the new Sport Coupe and the new Corolla with a sport, fold-down rear seat.

And there's a sporty equipped SR-5 model of the Harrier, Sport Coupe and Libeccio.

A quality car can be economical. The Toyota Corolla gets great gas mileage. Note: 1975 EPA highway, 24 city. These EPA ratings are estimates. The actual mileage you get will vary depending on your driving habits and your car's condition and equipment. California EPA ratings will differ. An automatic transmission is available on Deluxe models.

Quality you asked for. You got it at nearly 1,000 authorized dealers across the U.S. These same dealers guarantee a network of service departments with Toyota trained mechanics. This new generation of Toyota Corollas. You can find a better buy small car than a Toyota. Stop!

39 MPG
Hwy

24 MPG
City

YOU ASKED FOR IT.

YOU GOT IT.

TOYOTA COROLLAS

A NEW GENERATION OF

WILLIAMSON SPORTS MOTORS
R. D. #1
MIR 1st, Pennsylvania 17551

HONDA CIVIC


HONDA CIVIC - 1974

FORD PINTO - 1975

AMC GREMLIN - 1973

TOYOTA COROLLA - 1978





1970S

ARCHITECTURAL
DESIGN

TERMINOLOGY

Post Modern

Brutalism

New Formalism

Solid End Wall

A-Frame

International Style

Neo-Expressionism

MODERN

Shed

MOVEMENT

MANSARD

Curtain Wall

Northwest Regional

Split Level

Populuxe

Miesian

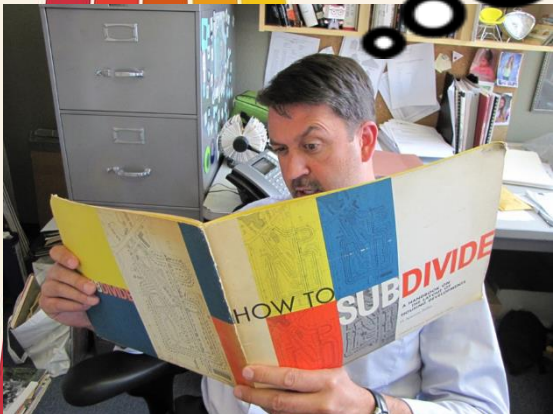
Early American

WRIGHTIAN

Contemporary

Deconstruction

GEODESIC DOME



TERMINOLOGY

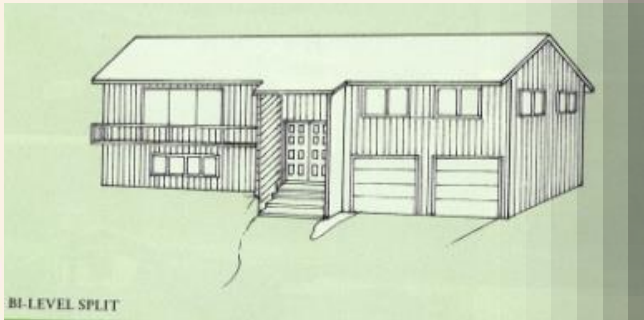
ing Characteristics:
 way leads to a landing between stories
 r than directly onto a story
 stories
 ; leading up to entryway
 an overhang between stories
 rent siding materials are often used for
 floor; horizontal siding is common
 ported garage
 floor combines service and living



Chesterfield County, VA
 (photo by Lena McDonald, 2013)



VIRGINIA SHPO – SPLIT FOYER



BI-LEVEL SPLIT

MCALESTER GUIDE – BI-LEVEL SPLIT

Bi-Level/Raised Ranch (1960s-1980s)

This two-story variation of the Ranch home featured a raised or garden level basement with larger, above-grade windows. The lower level usually contained a family room, a bedroom, bathroom, and utility room with the living room, kitchen, bathroom, and additional bedrooms located on the upper level. The entry was at-grade, either centered on the facade or next to an attached garage. The lower portion of the exterior was often faced in brick with the upper level generally sided in wood, vinyl, or aluminum siding.



photo credit: Mary Trestle Acosta

HISTORICTURE, LLC

CITY OF PUEBLO, CO – BI-LEVEL/RAISED RANCH

architectural movements of the recent past.

BI-LEVEL (1960s-PRESENT)

FEATURES TO LOOK FOR:

- RAISED BASEMENT
- WINDOWS NEAR GRADE LEVEL
- FRONT PORCH LEADS TO TWO-STORY LANDING HALFWAY BETWEEN TWO FLOORS, NOT OTHER ORNAMENTALLY LOCATED
- UPPER LEVEL HAS PROJECTING FACADE
- REAR DECK ON UPPER LEVEL
- GARAGE WIND HAS SEPARATE GARAGE, ROOF LINE

The Bi-level was born out of its Ranch and Split-level counterparts. Split-levels level provided a roomier alternative to Ranch houses, but these Split-levels did not always lend themselves to a roomier, combining plan of the Ranch. To combat this deficiency in the plan to only divide the entryway rather than the entire structure, a front door that leads to a two-story landing halfway between

level in its separation of interior spaces, his time divided by the floor a formal middle level. The upper level generally has of the lower level has the garage and living area. Spaces are a building's lot. The entry could be lowered or raised, depending on the lot. Examples are typically characterized by Colonial, Tudor, or

call us immediately!

SPLIT ENTRY

DAYLIGHT BASEMENT
 3 BEDROOMS.
 WOODED LOT
\$1,700 DN.

BRAND NEW. Sumptuous entry landing with open stairway to lower and upper levels. Beautiful territorial view from large living room. Circular floor plan. Dining room. Big kitchen with eating space and built-in appliances. A charming private and individual setting on a black-topped quiet street. F. H. A. built at \$17,500. CALL NOW. NORTHLAKE PROPERTIES HU 6-2735

HIGGINS, INDIANA – BI-LEVEL

WASHINGTON STATE – SPLIT ENTRY



Elevation C with lower level garage

new high ranch design ...
 one basic floor plan ...
 six different and exciting exteriors



Suggested lower level without garage



Suggested lower level with garage



Elevation C without garage

PERIOD CATALOGUE HIGH RANCH

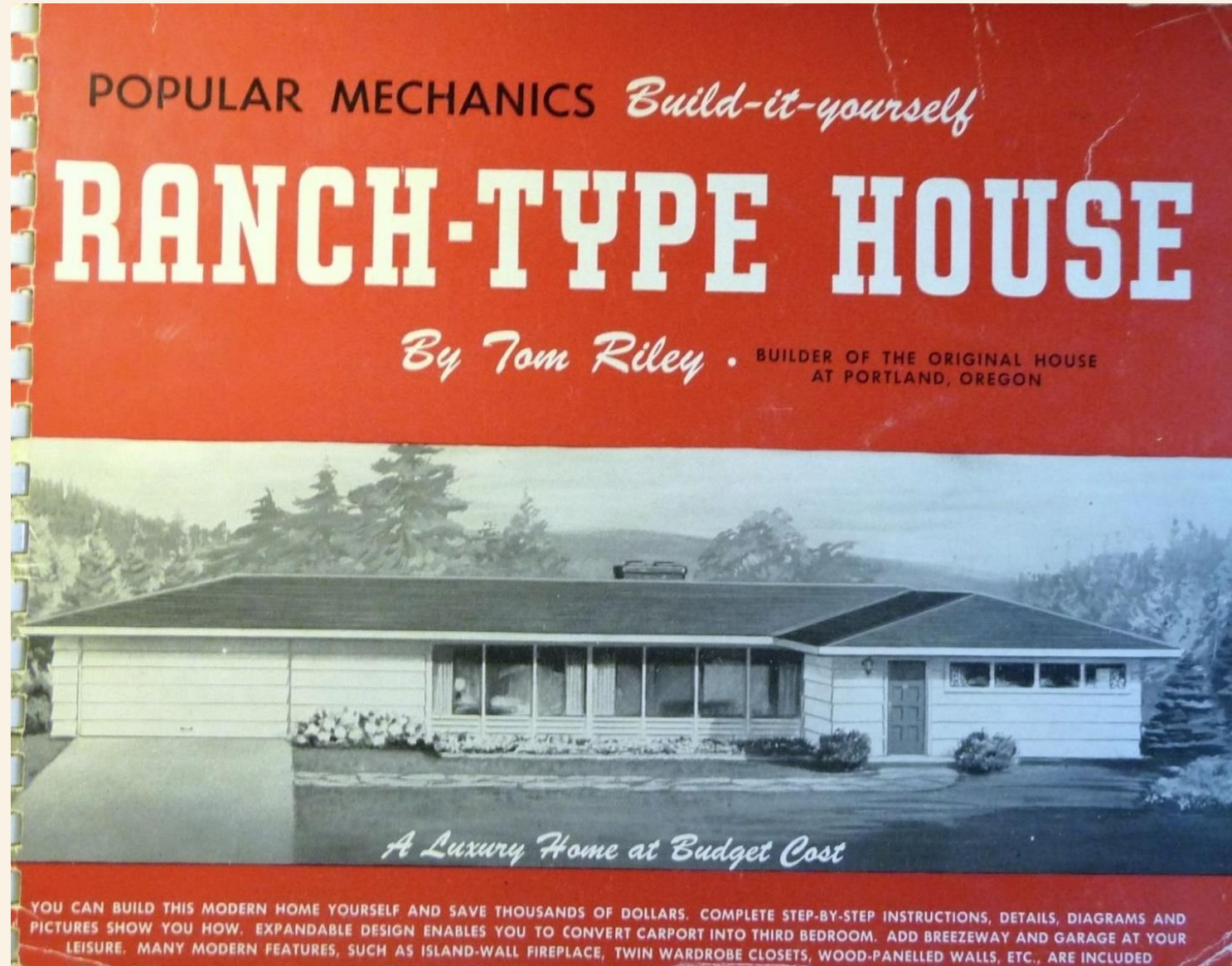
STYLE vs. TYPE

STYLE: IS DECORATION OR ORNAMENTATION THAT HAS BEEN PUT ON A BUILDING IN A SYSTEMATIC PATTERN OR ARRANGEMENT. BUT IT ALSO INCLUDES PROPORTION, SCALE, MASSING, SYMMETRY OR ASYMMETRY, AND THE RELATIONSHIP AMONG PARTS SUCH AS SOLIDS AND VOIDS OR HEIGHT, DEPTH AND WIDTH.



TYPE: IS DEFINED BY A SEEMINGLY SIMPLE ARCHITECTURAL FORMULA -
PLAN + HEIGHT

REIGN OF THE RANCH



RANCH

1950-1985

LINEAR, ASYMMETRICAL, ONE-STORY FACADE

LOW-PITCHED ROOF, TYPICALLY SIDE-GABLED, CROSS GABLED, OR HIPPED

SMALL FRONT ENTRY PORCH

EMPHASIS ON HORIZONTAL

OFTEN DESIGNED TO CONNECT WITH THE OUTSIDE AT THE REAR OF THE BUILDING

SHEATHED IN CLAPBOARD, T-1-11, BRICK, BOARD-N-BATTEN, OR ANY COMBINATION THEREOF

ATTACHED/BUILT-IN GARAGE

MODERATE TO WIDE OVERHANGING EAVES

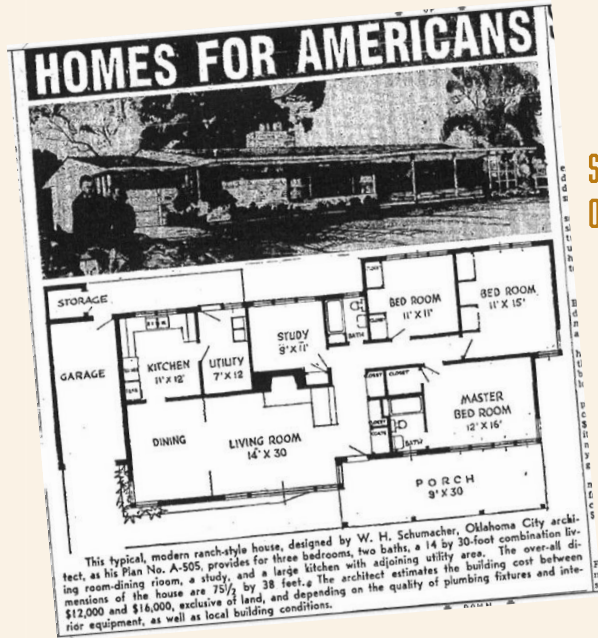
BANDED AND/OR PICTURE WINDOWS

HOUSE OLYMPIA, C.1960

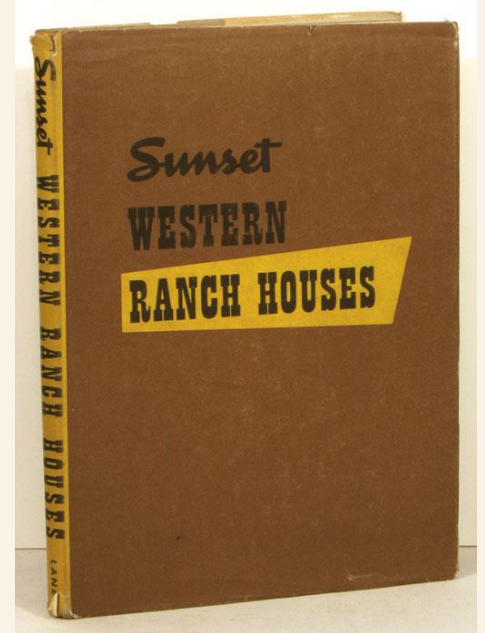
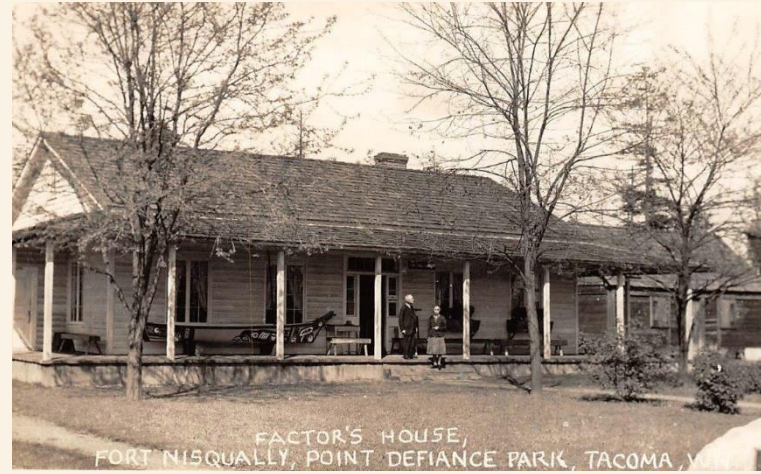


RANCH HISTORY

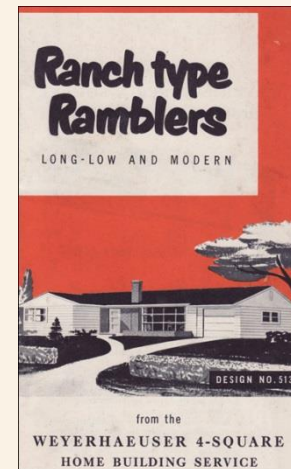
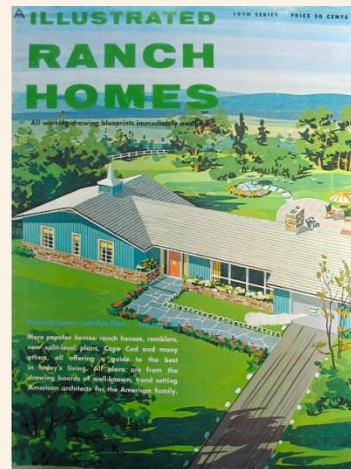
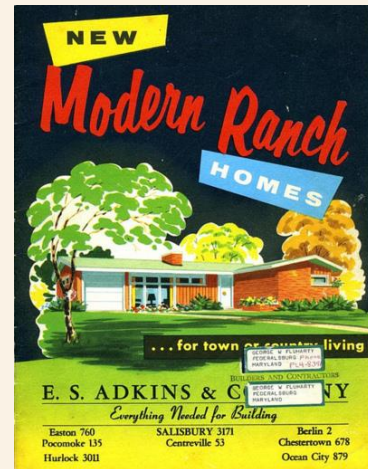
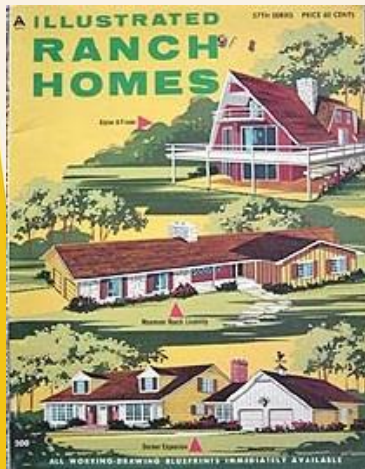
SUNSET WESTERN RANCH HOUSES - 1946



SEATTLE TIMES
OCTOBER 19, 1947



PLAN BOOKS 1960'S



RANCH STORYBOOK RANCH/CINDERELLA

RESIDENTIAL EXAMPLES



HOUSE OLYMPIA, C.1968



HOUSE TACOMA, C.1960



HOUSE TACOMA, C.1960

OPEN NOON TO DARK
 ANOTHER
 "Story Book Home"
 3 Bedrooms \$10,900
 Total Dn. \$400
 Including All Closing Costs!

4 agencies are available for this area...
 DRIVING DIRECTIONS: ...



HOUSE SPOKANE, C.1963

RANCH COWBOY/WESTERN RANCH

RESIDENTIAL EXAMPLES



HOUSE LAKEWOOD, C.1968



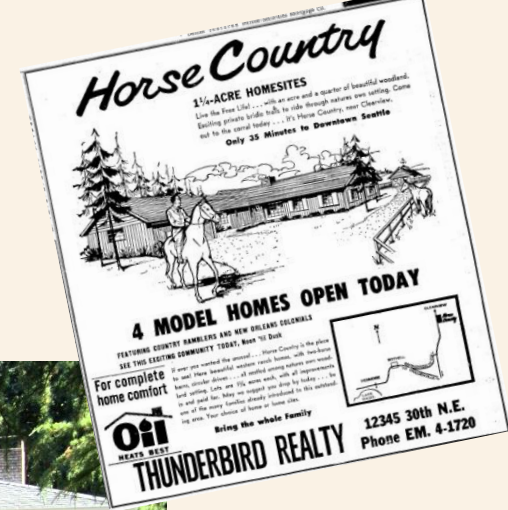
HOUSE OLYMPIA, C.1967



HOUSE VANCOUVER, C.1970



HOUSE RENTON, C.1974



RANCH ASIAN INSPIRED RANCH

RESIDENTIAL EXAMPLES



HOUSE KIRKLAND, C.1968



HOUSE CONNELL, C.1967



HOUSE BELLEVUE, C.1970



HOUSE EVERETT, C.1967



3 Bedrooms in One-Level House

Subtle variations and the choice of materials and colors that characterize the style are characteristic of the late '60s. Many "ranch" style homes in British Columbia were built in British Columbia.

Robert Cooper, architect, drew the plans. Stewart Collier did the construction and Frank Yoshida the landscaping.

FLOOR PLAN: A massive chimney of beams. An adjacent shell screen, sliding doors, built into the wall, may open from the kitchen into the dining room.

CEDAR SHEDS: The cedar sheds are not to be confused with the cedar sheds in the entry. A large cedar shed is located in the back yard, where there are evergreen trees.

Inside the house covered the entry, as well as both the living and dining areas. The floor is made of dark, polished stone. The floor is made of dark, polished stone. The floor is made of dark, polished stone.

RANCH WRIGHTIAN RANCH

RESIDENTIAL EXAMPLES



HOUSE PORT ANGELES, C.1958



HOUSE VANCOUVER, C.1965



HOUSE BELLEVUE, C.1960



HOUSE SEATTLE, C.1967

RANCH HACIENDA RANCH

RESIDENTIAL EXAMPLES



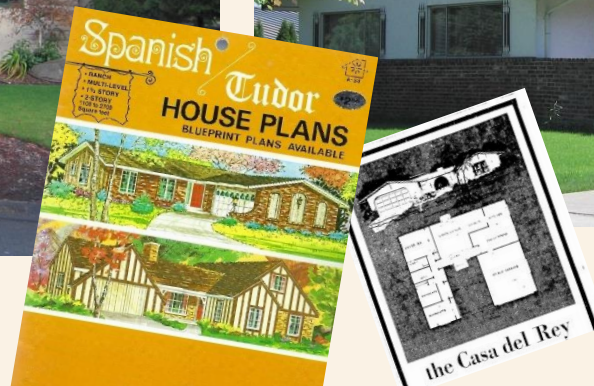
HOUSE RENTON, C.1972



HOUSE TACOMA C.19774



HOUSE KENT, C.1970



HOUSE LAKE FOREST PARK, C.1969

RANCH EARLY AMERICAN / COLONIAL RANCH

RESIDENTIAL EXAMPLES



HOUSE LAKEWOOD, C.1972



HOUSE EVERETT, C.1967



HOUSE LAKEWOOD, C.1970

CUSTOMIZED CONTEMPORARY Early American Beauty
 4341 91st S.E. \$32,500⁰⁰
 ON TERMS

2,200 Sq. Ft. All on one floor!
 The quarry tile entry into a delightful wood panel and cherry wood hall separates the kitchen, living and dining rooms from the bedroom area.

There are 4 bedrooms including a master bedroom and 2 complete baths.

The living room is spacious and has a unique fireplace with antique copper hood. Sliding glass doors to patio. Family room off kitchen. Early American copper hood covers bathroom gift and bath tub range. Bath in master bedroom and covered many other exceptional features in kitchen in work saving kitchen.

Garage large enough for 2 cars and a boat. Sewer!

EWING and CLARK
 MERCER ISLAND SHOPPING CENTER AD. 2-2110
 2741 78th S.E. ACROSS FROM TRADEWELL



HOUSE LAKEWOOD, C.1965

RANCH MODERN RANCH

RESIDENTIAL EXAMPLES



HOUSE ABERDEEN, C.1965



HOUSE SEATTLE, C.1958



HOUSE EDMONDS, C.1970



HOUSE EVERETT, C.1958

SPLIT DECISIONS



the Arlington

Distinctive double doors open from the recessed entry of this handsome split-level rambler.

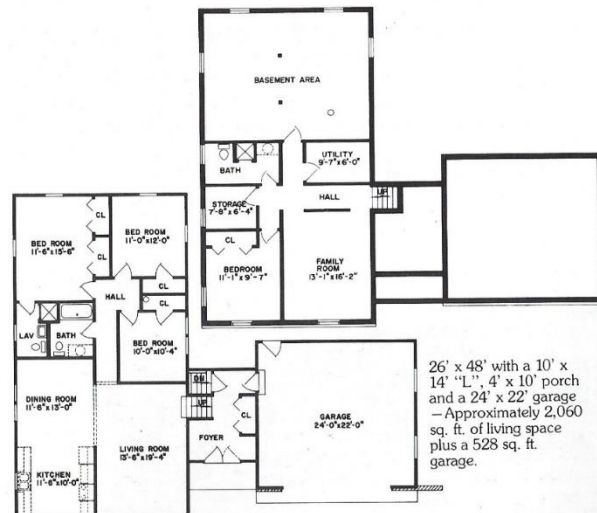
Inside, the upper level contains 3 bedrooms, 2 baths, living room, kitchen and dining room. His and Hers closets in the master bedroom feature bi-fold doors, as does the closet in the large entrance foyer.

The basement level contains plenty of space for a suggested 4th bedroom, recreation room, bath, and laundry room.

Outside, you'll note the cantilevered front with its 12" overhang, the gable end roof over the foyer and garage, and the hip roof on the upper level.

The garage has ample room for two cars and storage.

Finishing materials for lower level furnished but not installed.

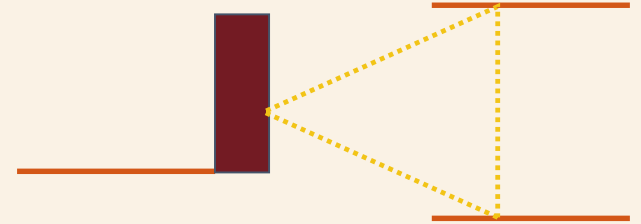


26' x 48' with a 10' x 14' "L", 4' x 10' porch and a 24' x 22' garage
— Approximately 2,060 sq. ft. of living space plus a 528 sq. ft. garage.

8023

SPLIT LEVEL

1935-1990



FRONT DOOR LEADS TO LIVING AREA

VARIOUS TYPES OF ROOF FORMS FOUND INCLUDING FRONT AND SIDE-FACING GABLES, HIP OR COMBINATION THEREOF

ALUMINUM SLIDING GLASS WINDOWS ARE COMMON

ATTACHED CARPORT OR INTEGRATED GARAGE INTO MAIN FLOOR PLAN

RAISED BASEMENT WITH WINDOWS NEAR GRADE LEVEL



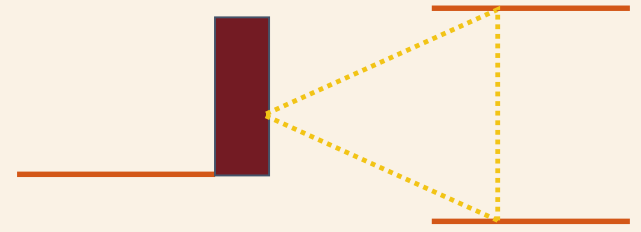
THREE SEPARATE LEVELS. TWO THAT ARE STAGGERED BY A PARTIAL FLIGHT OF STAIRS

APPLIED ORNAMENTATION VARIES GREATLY

CONCRETE FOUNDATION

HOUSE BELLEVUE, C.1960

SPLIT LEVEL HISTORY

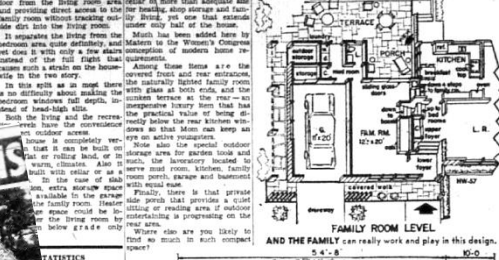


House of the Week
Modern Split Level Found First Choice
 By JOE WING
 Women have been crying for the modern living feature incorporated in this split level house of the future.
 They said as much during the Women's Congress on Housing in Washington.
 To meet their demands, famed architect Frank Lloyd Wright has already designed two wistful suburban ranch homes. Now he turns the trick even more deftly with this split-level, single-story bungalow house. It's the first in the House of the Week series.
 Just what is it that American women want in the way of a house? Here are some of the original requirements as brought out at the Congress and as incorporated in HW-37:
 1. Three bedrooms—



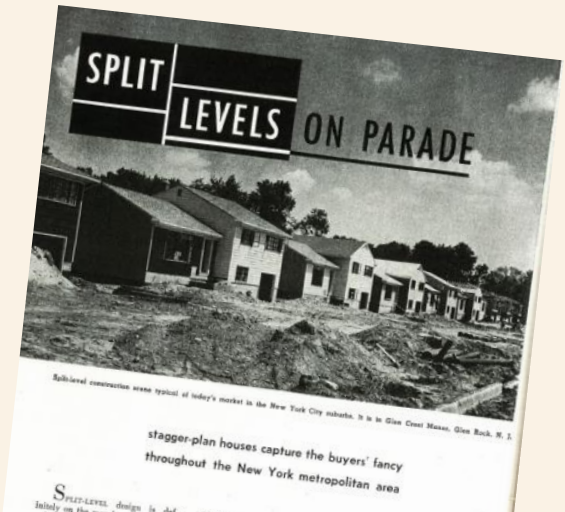
BESIDES ITS NATURAL assets, this attractive split level has the added points of living comfort suggested by the Women's Congress on Housing.

door from the living room area and providing direct access to the family room without tracking outside dirt into the living room.
 It separates the living from the bedrooms area quite definitely and makes it the Women's Congress concept of modern home quarters.
 Among these homes are the covered front and rear entrance, the naturally lighted family room with glass at both ends, and the screen terrace at the rear—an inexpensive luxury item that has the practical value of screen directly below the rear kitchen window so that Mom can keep an eye on active youngsters.
 Side exit to the open, outdoor storage area for garden tools and traps, the lavatory located to serve maid room, kitchen, family room, porch, garage and bathroom with great ease.
 Finally, there is that private side porch that provides a quiet place for reading area of outdoor entertaining is progressing on the real area.
 Where else are you likely to find so much in such compact space?



AND THE FAMILY can really work and play in this design.

EVERETT HERALD - JUNE 15, 1957



Stagger-plan houses capture the buyers' fancy throughout the New York metropolitan area



HOUSE SEATTLE, 1941

HOMES FOR AMERICANS

AP Newfeatures
 Construction economy has given the split level, such as this design shown here, its widespread popularity. With bedrooms a flight up from the living room wing, the garage is accommodated under the bedroom wing with a ground floor laundry and heating terrace behind under the living room wing. This is Plan Y-327 b plant is located under the living room wing. This is Plan Y-327 b Herman York, architect, 90-01 161st St., Jamaica 2, N. Y. The house has 1,500 square feet of habitable floor space.—P Newfeatures.

3 bedrooms, split levels are most popular houses

Today's typical homeshoppers are a couple wanting a three-bedroom split-level on a large deep lot.
 This and other findings resulted from a 100-question survey of 689 homeshoppers conducted at 27 different home developments on the West coast, the Spokane Board of Realtors research department reported.
 The researchers reported that the most popular house emerging from the findings was a three-bedroom split-level with 2.3 times their annual family income, well within the traditional 2.5 to 1 guideline.
 The largest percentage of shoppers, 37 per cent, were couples, followed by three-person families, 23 per cent, and four-person families, 22 per cent. The majority of the shoppers, 55 per cent were looking at both new and used homes.
 People still relate to their own plot of land: 28 per cent want a large lot with a deep backyard; 22 per cent, a medium-sized lot.

Small common areas and centers were favored over large ones, 33 per cent to 21 per cent.
 Out of a list of 14 items, the most popular community recreational facilities were swimming pool, 95 per cent; tennis courts, 88 per cent; and tennis courts, 84 per cent.

Tax credit

SPOKESMAN REVIEW - JULY 13, 1975

AMERICAN BUILDER OCTOBER 1953

Split-level design is still largely on the march. In many areas along the east coast and in suburban sections of some of the larger midwestern cities, it has been appearing steadily in increasing numbers. In the New York City area, however, its rise in that time spring, few builders have dared to open a new development of model rows for public inspection. Even small plots scattered throughout heavily built-up sections in the chosen suburbs are being sold at high prices for improvement with attractive multi-level, two-level, tri-level or dual-level dwelling units.
 In one of its biggest real estate sections of the year, the New York advertisements published 40 display advertisements of new developments in Long Island and Westchester County, New York, and in New Jersey. Thirty-three, or 70 per cent, featured the split-level house. Six others indicated such units were available.
 Klein and Teicholz, one of the largest operators on Long Island, has 190 signed contracts in their current Lakewood Estate operation at East Meadow, New York, 10 families, at 45 per cent, bought split-

THE FAMOUS CASE-HISTORY SURVEY OF MORAL, SOCIAL AND SEXUAL BEHAVIOR IN THE SUBURBS... "A KINSEY REPORT ON SUBURBIA"

—CHICAGO DAILY NEWS

THE SPLIT-LEVEL TRAP

Richard E. Gordon, M.D., Katherine K. Gordon and Max Bamber

1960

They shared a life of shocks, kicks and sex with the wives of country-club friends

Split-Level Love

Carlton Gibbs

HOW RECKLESS YOUNG SUBURBANITES SAY "HELLO" TO SEX —AND "GOODBYE" TO MARRIAGE!

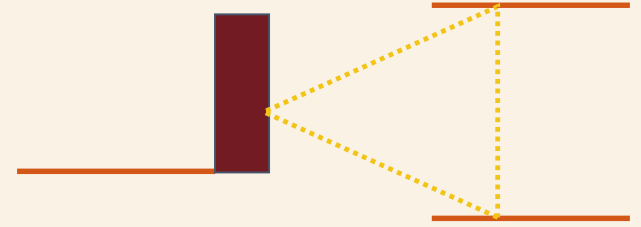
A COMPELLING NOVEL OF THE STATION-WAGON SET

1964

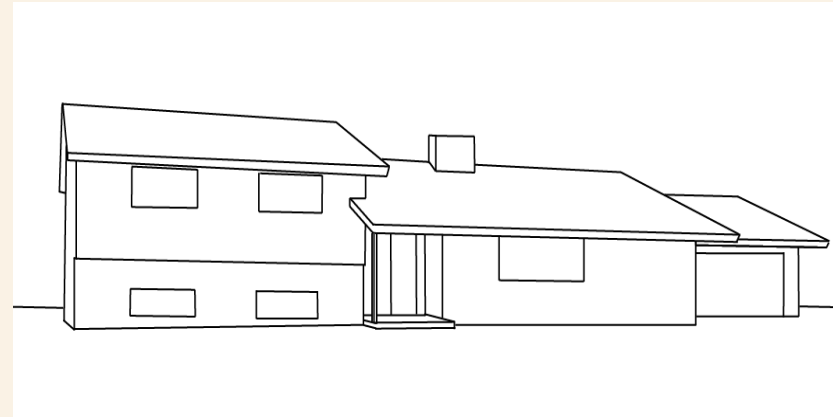
TACOMA NEWS TRIBUNE - JANUARY 16, 1955

SPLIT Level

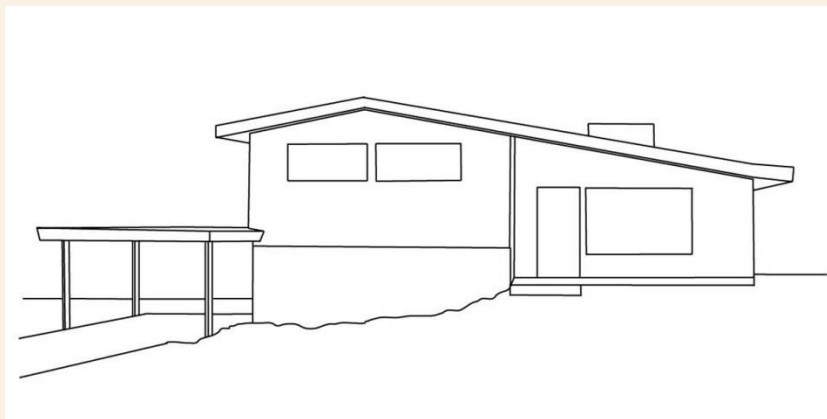
CONFIGURATIONS / SUB-TYPES



THE CLASSIC



SIDE-BY-SIDE



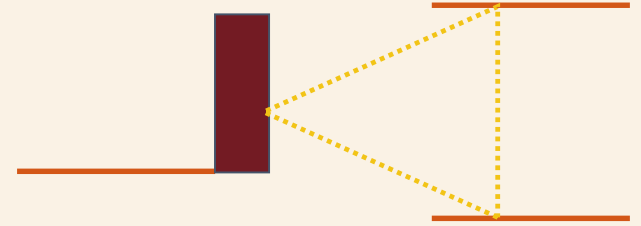
FLYING WING



RAISED REAR

SPLIT LEVEL

"THE CLASSIC" examples



HOUSE | LYNWOOD, C.1970



HOUSE | VANCOUVER, C.1962



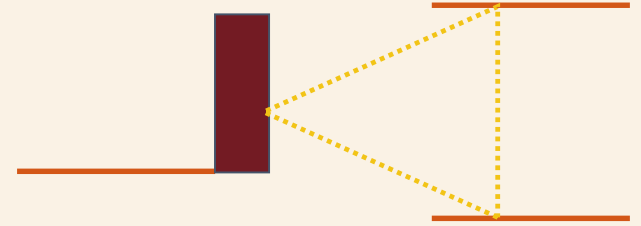
HOUSE | CHENEY, C.1965



HOUSE | TACOMA, C.1968

SPLIT LEVEL

“FLYING WING” examples



HOUSE | LYNWOOD, C.1970



HOUSE | VANCOUVER, C.1962



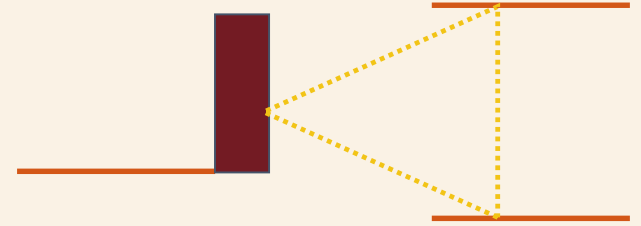
HOUSE | BELLEVUE, C.1964



HOUSE | KIRKLAND, C.1968

SPLIT LEVEL

“SIDE - BY - SIDE” EXAMPLES



HOUSE | ANACORTES, C.1968



HOUSE | VANCOUVER, C.1972



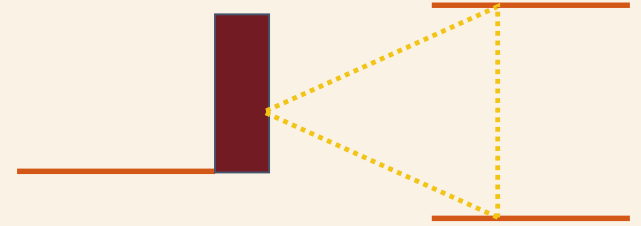
HOUSE | RICHLAND, C.1967



HOUSE | LYNWOOD, C.1964

SPLIT LEVEL

STYLE EXAMPLES



SPANISH | BELLEVUE C.1975



STORYBOOK | CHEHALIS, C.1962



EARLY AMERICAN | RICHLAND, C.1965

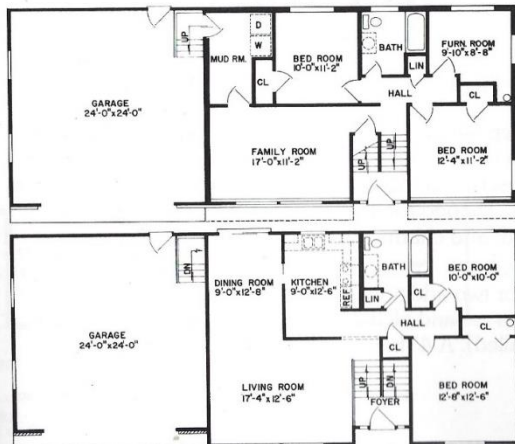


TUDOR | SPOKANE, C.1964

SPLIT DECISIONS AGAIN!



the Hudson



26' x 38' with 24' x 24' garage—Approximately 1,900 sq. ft. of living area plus a 576 sq. ft. garage.

8021

This 4-bedroom split-foyer design has a large living-dining room combination with a patio door leading to the back from the dining room.

Sidelight windows flank the front door.

Other features include two full baths, slideby windows on both levels and a family room on the lower level. Lower level also has a mudroom and a furnace room in addition to two bedrooms.

The two-car garage is accessible from the lower level.

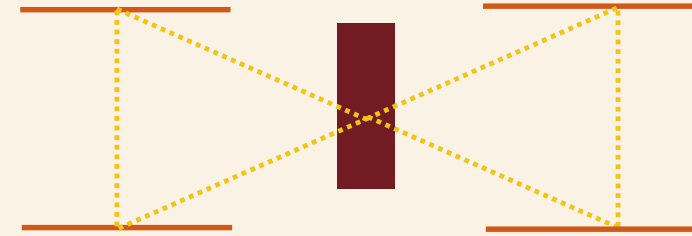
The price (see list) includes finishing materials for the basement level. A 4' frame wall across the front of the house for the lower level is included.

8021 Optional



SPLIT entry

1950-1990



FRONT DOOR LEADS TO TWO-STORY LANDING HALFWAY BETWEEN TWO FLOORS,
MOST OFTEN CENTRALLY LOCATED

VARIOUS TYPES OF ROOF FORMS FOUND INCLUDING FRONT
AND SIDE-FACING GABLES OR COMBINATION THEREOF

UPPER LEVEL
CONTAINS
WORKING AND
SLEEPING SPACES,
LOWER LEVEL HAS
GARAGE AND LIVING
AREA

OFTEN, UPPER LEVEL HAS
PROJECTING FACADE

ALUMINUM SLIDING GLASS
WINDOWS ARE COMMON

RAISED BASEMENT
WITH WINDOWS
NEAR GRADE LEVEL

APPLIED ORNAMENTATION
VARIES WITH HIGH USE OF
COLONIAL ELEMENTS

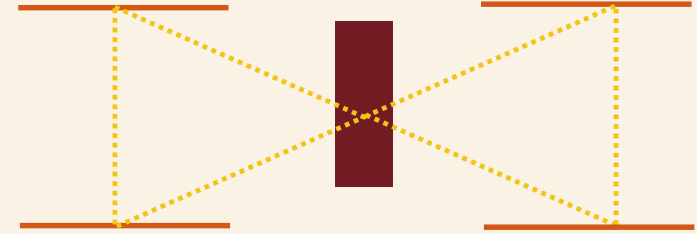


CONCRETE FOUNDATION

HOUSE LYNWOOD, C.1970

SPLIT ENTRY

RESIDENTIAL EXAMPLES



HOUSE | BELLEVUE, C.1968



HOUSE | LYNWOOD, C.1972



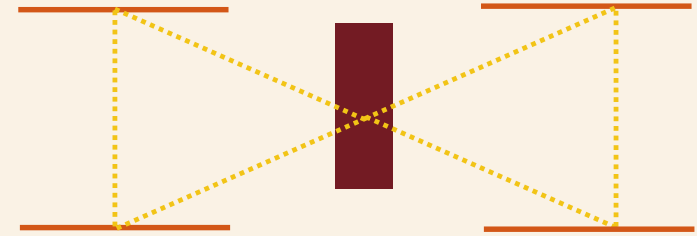
HOUSE | TACOMA, C.1970



“RIVIERA” MODEL HOME | BELLEVUE, C.1958

SPLIT ENTRY

RESIDENTIAL EXAMPLES



HOUSE | SEATTLE, C.1968



HOUSE | RICHLAND, C.1975



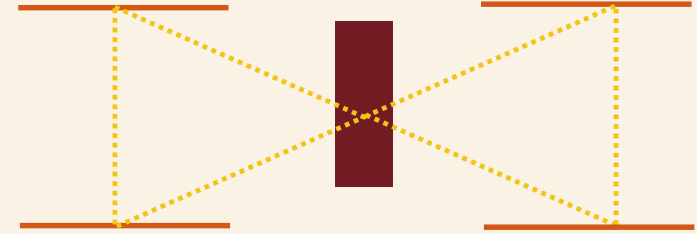
HOUSE | SPOKANE, C.1975



HOUSE | KENNEWICK, C.1965

SPLIT ENTRY

RESIDENTIAL EXAMPLES



HOUSE | SEATAC, C.1968



HOUSE | ELLENSBURG, C.1969



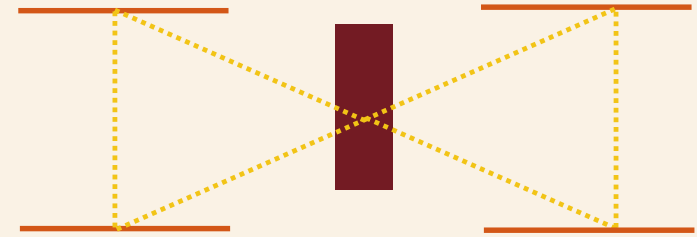
HOUSE | TACOMA, C.1968



HOUSE | KIRKLAND, C.1971

SPLIT ENTRY

TUDOR | SPANISH EXAMPLES



HOUSE | KENT, C.1969



HOUSE | OLYMPIA, C.1975



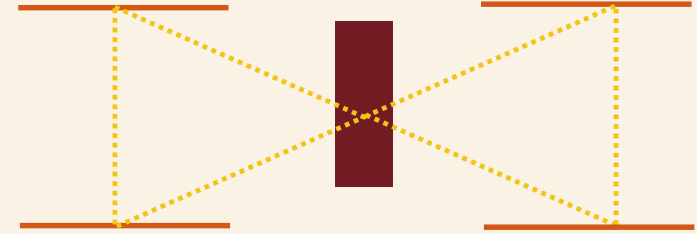
HOUSE | RENTON, C.1968



HOUSE | REDMOND, C.1973

SPLIT ENTRY

EARLY AMERICAN EXAMPLES



HOUSE | KIRKLAND, C.1970



HOUSE | FEDERAL WAY, C.1975



HOUSE | OLYMPIA, C.1967



HOUSE | SHORELINE, 1961

YOU CAN LIVE IN THE HUT



Pavilion

1958-1980

"IRIMOYA" STYLE ROOF FORM
WITH CROWN-LIKE APPEARANCE

UPPER ROOF CAN UTILIZE STEEP HIP, GABLE OR MANSARD FORM

AREA FOR CENTRAL CHIMNEY
OR SKYLIGHT, AND CAN HIDE
MECHANICAL EQUIPMENT

WIDE OVERHANGING
EAVES WITH EXPOSED
RAFT TAILS OR BOXED
SOFFITS

FLOOR TO CEILING WINDOWS

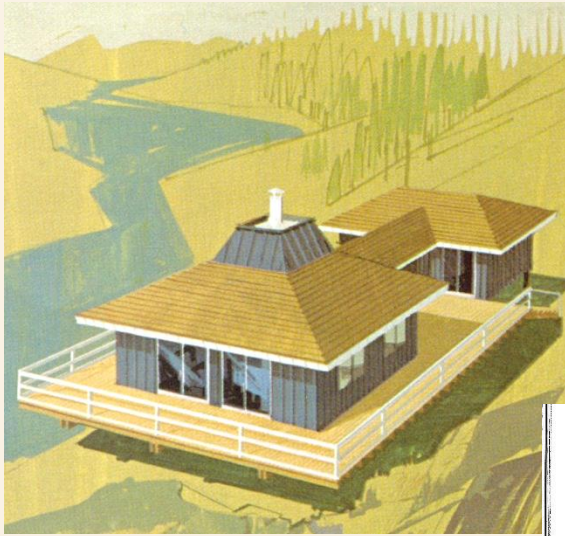
CLAD IN BRICK,
T-1-11, CLAPBOARD, STONE OR
STUCCO



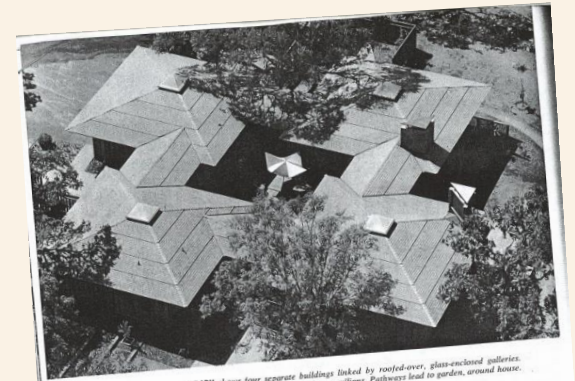
OFTEN SITING ON RAISED PLATFORM FOUNDATION

LINDAL CEDAR HOMES MODEL FIFE, C.1980

Pavilion HISTORY



SUNSET: IDEAS FOR PLANNING YOUR NEW HOME, 1967



HELICOPTER PHOTOGRAPH shows four separate buildings linked by roofed-over, glass-enclosed galleries. A central patio is paved and planted, surrounded by four pavilions. Pathways lead to garden, around house.

Pavilion plan...for "zoned living"

ARCHITECT: HERBIE HULL
"DISCOVERY HOUSE" SPONSORED BY SUNSET MAGAZINE

The helicopter photograph of this house (shown above) readily explains the pavilion arrangement of its floor plan. Four separate buildings are linked by roofed-over, glass-enclosed galleries, or outdoor passageways. Each of these "living zones" has a separate function. The Discovery House was originally planned and sponsored by Sunset Magazine and the architect as an idea laboratory for people who are in the house-dreaming, house-planning, or home-shopping stage.

The house plan provides each family member with his own private domain, yet also supplies places for the family to be together. Parents have a sitting room retreat for themselves or for intimate entertaining, opening off to their bedroom. Each child has a room of his own and they share a common recreation area.

One of the pavilions is for all the family. It has the entry, the living and dining areas, and the kitchen. Located in the service pavilion are such noisy activities as laundry, repair work, and shop or craft projects that are best kept away from other living areas.

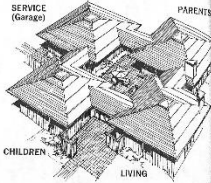
The enclosed central court is the largest room of the house, with floor and walls, but open to the sky. The house walls are the solid reinforced walls of the house, not the glass of the other.

One interesting and fresh idea is the multiple house. Two of the four winners of first Honor Awards for 1965-1966 use a multiple plan

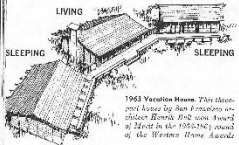
The multiple house idea is not new. It's just beginning to move ahead in spectacular ways. One of the most recent examples is a house house and a sleeping porch, separate but close together, and usually with some sort of modern linkage between.

One particularly interesting two-part house, designed by Pasadena architect S. S. W. House, was the House Award in the 1965-1966 award of the Western Home Awards program. And it has a special honor because it was the Award of Merit in the year just past, page 89.

It's a two-story, modern house that joins the two parts. The house is a two-story, modern house that joins the two parts. The house is a two-story, modern house that joins the two parts.

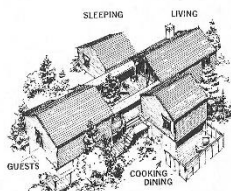


1962 Discovery House sponsored by Sunset had four connected pavilions, each a separate normal house. One of them was the Discovery House during the 1965 and 1966 in the Western Home Awards, and of course was the House Award in the 1966-1967.

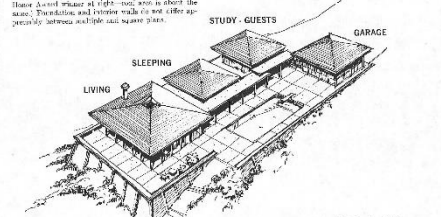


1962 Western Home Award house by San Francisco architect S. S. W. House, was the House Award in the 1965-1966 award of the Western Home Awards program. And it has a special honor because it was the Award of Merit in the year just past, page 89.

The multiple house idea is not new. It's just beginning to move ahead in spectacular ways. One of the most recent examples is a house house and a sleeping porch, separate but close together, and usually with some sort of modern linkage between.



1965 Home Award house on the Discovery House has four pavilions, which connect a common sitting porch. The house is shown in the Discovery House during the 1965 and 1966 in the Western Home Awards, and of course was the House Award in the 1966-1967.



1965 Home Award house in the California Pacific is an unusual plan of four pavilions with a connecting central passage and a great sleeping porch. For more details and photographs see page 89 and 90.

The Whidbey Series

OPEN MONDAY THRU SATURDAY
... meet with a Factory representative to determine the savings available by building new. Our complete Home Planning Services can take the work out of building your new home with our complete design, construction and financing programs.

PHONE 454-3966
Mail \$2 for a COMPLETE HOME PLANNING PACKAGE

CEDAR HOMES MANUFACTURING CORP.
11654 NE 6th, Bellevue, Wa, 98005

NAME PHONE
ADDRESS
CITY STATE
BUILDING SITE LOCATION

SEATTLE TIMES NOVEMBER 10, 1974

One interesting and fresh idea is the multiple house. Two of the four winners of first Honor Awards for 1965-1966 use a multiple plan

The multiple house idea is not new. It's just beginning to move ahead in spectacular ways. One of the most recent examples is a house house and a sleeping porch, separate but close together, and usually with some sort of modern linkage between.

One particularly interesting two-part house, designed by Pasadena architect S. S. W. House, was the House Award in the 1965-1966 award of the Western Home Awards program. And it has a special honor because it was the Award of Merit in the year just past, page 89.

It's a two-story, modern house that joins the two parts. The house is a two-story, modern house that joins the two parts.

1962 Discovery House sponsored by Sunset had four connected pavilions, each a separate normal house. One of them was the Discovery House during the 1965 and 1966 in the Western Home Awards, and of course was the House Award in the 1966-1967.

1962 Western Home Award house by San Francisco architect S. S. W. House, was the House Award in the 1965-1966 award of the Western Home Awards program. And it has a special honor because it was the Award of Merit in the year just past, page 89.

The multiple house idea is not new. It's just beginning to move ahead in spectacular ways. One of the most recent examples is a house house and a sleeping porch, separate but close together, and usually with some sort of modern linkage between.

One particularly interesting two-part house, designed by Pasadena architect S. S. W. House, was the House Award in the 1965-1966 award of the Western Home Awards program. And it has a special honor because it was the Award of Merit in the year just past, page 89.

It's a two-story, modern house that joins the two parts. The house is a two-story, modern house that joins the two parts.

1962 Discovery House sponsored by Sunset had four connected pavilions, each a separate normal house. One of them was the Discovery House during the 1965 and 1966 in the Western Home Awards, and of course was the House Award in the 1966-1967.

1962 Western Home Award house by San Francisco architect S. S. W. House, was the House Award in the 1965-1966 award of the Western Home Awards program. And it has a special honor because it was the Award of Merit in the year just past, page 89.

1965 Home Award house on the Discovery House has four pavilions, which connect a common sitting porch. The house is shown in the Discovery House during the 1965 and 1966 in the Western Home Awards, and of course was the House Award in the 1966-1967.

1965 Home Award house in the California Pacific is an unusual plan of four pavilions with a connecting central passage and a great sleeping porch. For more details and photographs see page 89 and 90.

SUNSET - OCTOBER 1965

House & Home
MANAGEMENT MAGAZINE OF THE BUILDING INDUSTRY
JULY 1964

1965 Home Award house on the Discovery House has four pavilions, which connect a common sitting porch. The house is shown in the Discovery House during the 1965 and 1966 in the Western Home Awards, and of course was the House Award in the 1966-1967.

1965 Home Award house in the California Pacific is an unusual plan of four pavilions with a connecting central passage and a great sleeping porch. For more details and photographs see page 89 and 90.

HOUSE & HOME
JULY 1964

dahp
DEPT OF ARCHAEOLOGY & HISTORIC PRESERVATION

PAVILION

HISTORY

CENTURY 21 IDEA HOUSE / GEORGIA PACIFIC IDEA HOUSE

A small house with great ideas proves
**YOU CAN HAVE QUALITY
FOR UNDER \$35,000**

If you have ever looked hopefully for the small house that "has everything," we invite you to join us on a tour of the Century 21 Idea House on these pages. While no house equals perfection for all families, we believe this one—designed and built in Seattle as a cooperative effort by H&G, the Georgia-Pacific Corporation and architects Bassotti and Morse—goes far to prove that great ideas can be incorporated at moderate price in quite limited space. The Century 21 Idea House was designed to gratify the fondest wishes of a young couple with one or two children. Built to sell for under \$35,000, its compact and disciplined plan includes seven large, well-proportioned rooms, two bathrooms, a powder room, three porches, a two-car garage and a good-size paved terrace. The best part of

this architectural bargain, however, is something money alone cannot buy; imaginative design and superb craftsmanship. Note first the unique silhouette achieved by a series of peaked and shingled roofs. Interesting for their visual effect, they fulfill an even greater purpose by clearly defining the major zones of family activity inside the house, which radiate out from a central T-shaped floor area paved in quarry tile. Set off by this central space, each zone becomes, in effect, a separate little "house," and the central paved area contributes a dramatic impact seldom found in a home of this size (1,150 square feet). Besides serving as the main artery of circulation, this strategic center includes redwood-walled dining and garden rooms which enjoy blessings of an 8-foot square skylight.

PHOTOGRAPH BY USA TODAY



8503 Inverness Dr., Seattle, 1961



Pavilion

RESIDENTIAL EXAMPLES



HOUSE | BELLEVUE, 1966



HOUSE | BELLEVUE, 1966



HOUSE | OLYMPIA, C.1969



CHARLES & CAROL | HANSEN HOUSE SPOKANE, 1973

Pavilion

RESIDENTIAL EXAMPLES



HOUSE | PUYALLUP, C.1973



DUPLEX | SEATTLE, C.1969



HOUSE | TACOMA, C.1975



HOUSE | NORMANDY PARK, C.1975

Pavilion

OTHER EXAMPLES



STERLING BANK | ELLENSBURG, C1976



UNITY CHURCH OF TRUTH | SPOKANE, 1973



RADIO SHACK | LYNWOOD, C1973



RAINIER MEMORIAL CENTER | YAKIMA, C1970

Pavilion

OTHER EXAMPLES



BUILDING | TACOMA, C1976



PIZZA HUT | LAKEWOOD, C1973

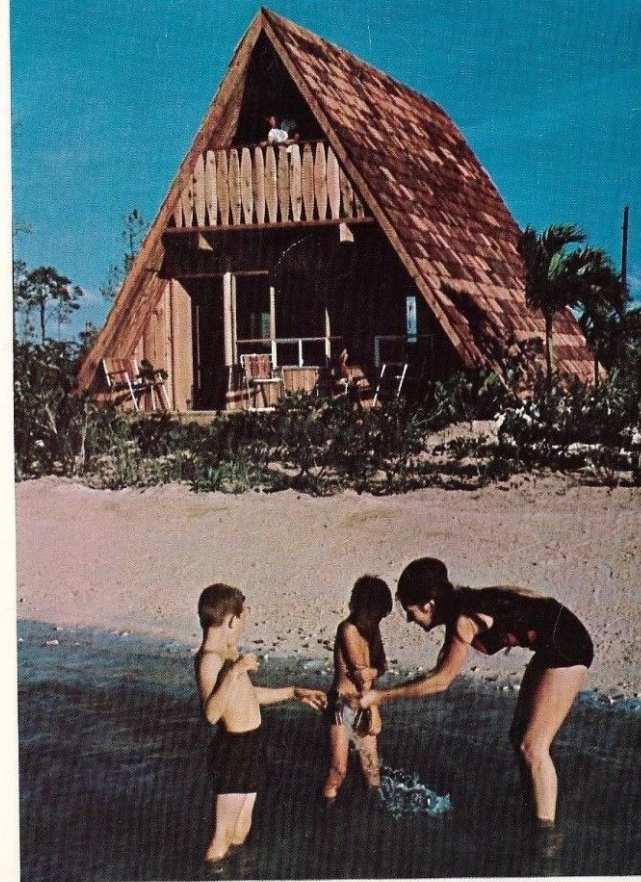


SHORELINE COMMUNITY COLLEGE | SHORELINE, C1965

a vacation every day



The warmth of Cedar



Homes of lasting beauty by... **LINDAL CEDAR HOMES** *Plan Book* ONE DOLLAR

a-FRAME

1960-1990

OFTEN HAS DEEP, INSET EAVES

LARGE EXPANSES OF GLASS ON FRONT AND REAR GABLES

STRUCTURE IS
COMPOSED OF WOOD
FRAME WHICH CAN BE
PREFABRICATED

TRIANGULAR SHAPE

RECTANGULAR PLAN
OF 1 ½ TO 2
STORIES TALL



STEELY SLOPING ROOF THAT
EXTENDS TO THE GROUND ON
TWO SIDES

TYPICAL SHINGLE
COVERED ROOF

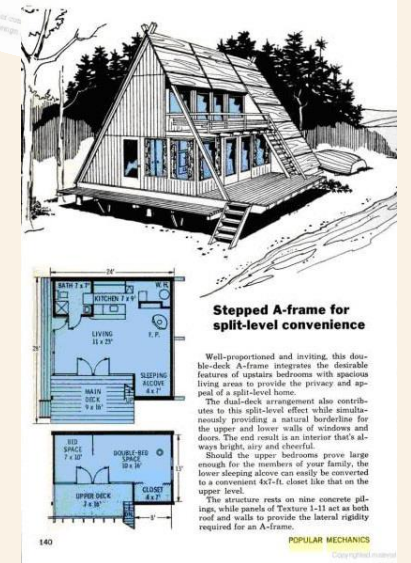
FEW VERTICAL WALL
SURFACES

SIMPLE FOUNDATION

CABIN HOOD CANAL, C.1965

a-FRAME

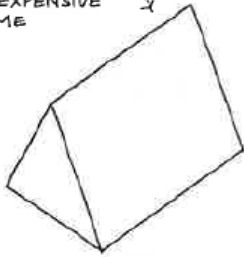
DR. HELLYER'S CABIN, OLYMPIA - 1958



POPULAR MECHANICS 1968

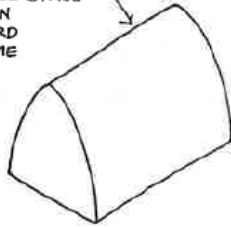
a-FRAME CONFIGURATIONS

MOST POPULAR,
LEAST EXPENSIVE
A-FRAME



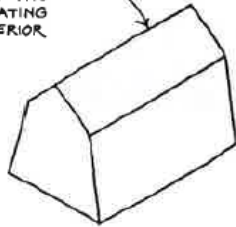
1 STANDARD A-FRAME

ELIMINATES
UNUSABLE SPACE
FOUND IN
STANDARD
A-FRAME



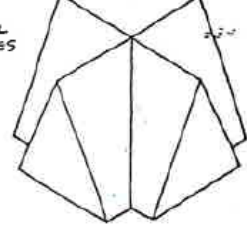
2 ARCHED (GOTHIC) A-FRAME

REDUCES THE
SLANT OF THE
ROOF CREATING
MORE INTERIOR
USABLE
SPACE



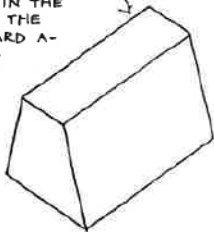
3 GAMBREL ROOF A-FRAME

ADMITS
NATURAL
LIGHT
FROM ALL
FOUR SIDES



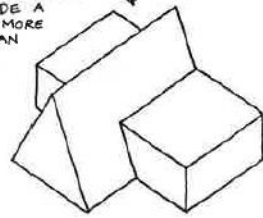
4 DOUBLE STANDARD A-FRAME

ELIMINATES
UNUSABLE SPACE
FOUND IN THE
TOP OF THE
STANDARD A-
FRAME
ROOF



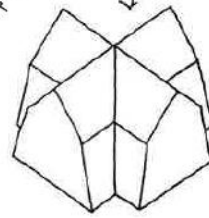
5 FLAT TOP A-FRAME

USES A-FRAME
AND STANDARD
BUILDING METHODS
TO PROVIDE A
LARGER, MORE
OPEN PLAN



6 A-FRAME WITH WINGS

REDUCES THE ROOF
SLANT AND ADMITS
LIGHT FROM
ALL FOUR
SIDES

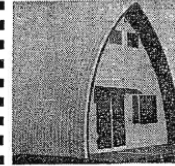


7 DOUBLE GAMBREL ROOF A-FRAME

Standard, Arched,
Gambrel, Double
Standard, Flat Top,
A-Frame w/Wings,
Double Gambrel,

engineer.

Olympic
Chal-A
for LEISURE LIVING



Prefab CHAL-A 16' x 24' plus 2 decks, featuring laminated arch beams, spiral stairway & loft with lots more headroom than A-Frame.

\$2,595 fob factory, Seattle

For \$100 off BUY NOW or at Home Show Feb. 18-26. Larger sizes also, all easy to erect.

Contact

OLYMPIC CHAL-A
DISTRIBUTOR
6805 Perimeter Road So.
Boeing Bld., Seattle, Wn.
723-7063 or 932-7684 Eves



CABIN E RIMROCK VILLAGE, NACHES 1955

SEATTLE TIMES, FEB 19, 1967

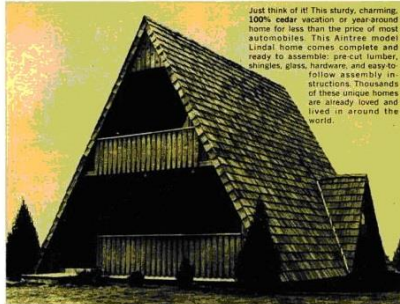


REBA HOUSE VANCOUVER, 1973



FIRST UNITED METHODIST CHURCH AUBURN, 1964

a-FRAME HISTORY



Just think of it! This sturdy, charming, 100% cedar vacation or year-around home for less than the price of most automobiles. This A-frame model Lindal home comes complete and ready to assemble: pre-cut lumber, shingles, glass, hardware, and easy-to-follow assembly instructions. Thousands of these unique homes are already loved and lived in around the world.

Here is the leisure home you've read and dreamed about

... all for an amazing \$3,345 (\$350 down - \$53.75 a month)

ACT NOW - MOVE IN THIS SUMMER - SAVE ALL SHIPPING COSTS UP TO \$600 IF YOUR ORDER IS RECEIVED BEFORE JUNE 1, 1966.
For further information - or to take advantage of any of these valuable options - write as soon as possible and give us your preference:

1. Immediate shipment of the A-frame home (similar to above) to the rail station of your choice - shipping charges prepaid.
2. \$3,345 full cash price - or \$350 cash payment with order, balance in monthly installments of \$53.75 per month (please include employment, bank, and credit-reference information).

APRIL 1966

POPULAR MECHANICS, APRIL 1966



Lindal to build headquarters here

Headquarters building, left, to be built on site.

display visible to freeway travelers.

A natural reflecting pool and children's play area will be included. Freeway walls, benches and outdoor courts.

Lindal Cedar Homes, Inc., manufacturer of pre-cut cedar homes, has purchased two acres adjoining Interstate 5 at the newly break-through headquarters spanning 112 feet from a central A-frame tower. Extensive use of glass will give the surrounding garden and decks which will be used across the work levels.



HUNTING LODGE, SWEDEN, 1871



SWEDISH WOODSHED AND HORSE STABLE, 19TH CENTURY

SECOND EDITION FIFTY CENTS FREE-TIME HOMES



presented by POTLATCH FORESTS, INC.

SEATTLE TIMES, JUNE 27, 1971

DESIGN NO. 442-1
WIDTH 22'-0"
DEPTH 22'-0"
768 SQUARE FEET

NATIONALLY RECOGNIZED A-FRAME DESIGN AVAILABLE TO FREE-TIME HOME BUILDERS.

During 1961 this A-frame designed by Home Building Plan Service was given national recognition as it appeared in 65 major magazines as an editorial feature and many leading magazines. Built along the McKenzie River in Oregon, this home has attracted visitors from as far away as Hawaii, California and Colorado.

A close examination of the exterior photographs shows on this page will reveal a truly beautiful dwelling. A deck runs on the living room measures 24'-0" x 25'-0" and has a complete window seat in the public end that overlooks the deck and McKenzie River below. Kitchen, dining, living and bath rooms are located on the first floor, with two bedrooms on the second level. Balcony of second floor is reached by central stair.

A complete working plans are available for the Free-Time home and can be ordered by filling out the plan order form on the opposite page (page 20).

LOWER LEVEL 768 SQUARE FEET

UPPER LEVEL 280 SQUARE FEET

PARTITION WALL OF LIVING ROOM OPENS ONTO DINING AREA LOCATED NEXT TO U-SHAPED KITCHEN. BALCONY ABOVE CONNECTS WITH TWO BEDROOMS.

VIEW OF LIVING ROOM REVEALS EXCELLENT UTILIZATION OF FLOOR SPACE AND HOW WINDOW WALL CONNECTS WITH PORCH DECK OVERLOOKING RIVER.

DESIGN NO. 426-1
WIDTH 22'-8"
DEPTH 35'-0"
815 SQUARE FEET
UPPER LEVEL - 319 SQUARE FEET

MOST POPULAR A-FRAME IN U.S.A.

A cut-away drawing has been made to better illustrate the excellent manner in which this free-time home can be furnished and used for maximum comfort and enjoyment.

This truly magnificent leisure-time home is designed to easily accommodate six people by means of the six beds in three bedrooms, a generous sized dining room, ample bathroom and kitchen facilities, and a most functional arrangement of living room furniture. Cabin may be built. Foundation may be adjusted to complete the curves gracefully. Important information regarding methods of construction and choice of materials is covered in the working plans.

This clever A-frame design is being featured as one of our most featured Free-Time Homes. The overall size of this building is 22'8" in width and 35'0" in depth, making a total of 1330 square feet of living space. A second story that measures 15'6" in width includes a sleeping loft that is 13'4" x 8'6" and a 12'4" x 11'0" bedroom. Large window area on gable end of A-frame building is used to advantage in lighting hallway bedrooms.

LOWER LEVEL 768 SQUARE FEET

UPPER LEVEL 280 SQUARE FEET

LIVING ROOM 22'8" x 20'0"

VIEW OF LIVING ROOM REVEALS EXCELLENT UTILIZATION OF FLOOR SPACE AND HOW WINDOW WALL CONNECTS WITH PORCH DECK OVERLOOKING RIVER.

POTLATCH FOREST INDUSTRIES HOMES, 1962

a-FRAME

RESIDENTIAL EXAMPLES



HOUSE | OLYMPIA, C1968



HOUSE | KIRKLAND, C.1967



HOUSE | SEATTLE, C1963



HOUSE | PUYALLUP, C1969



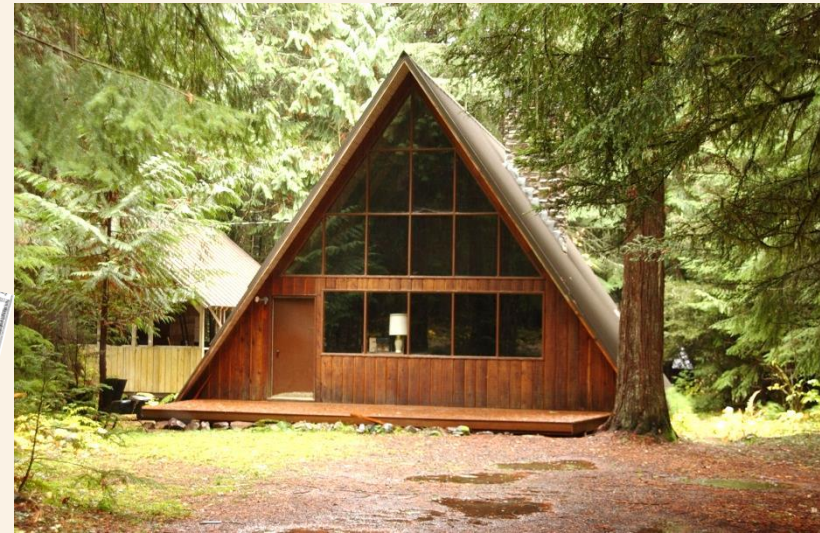
GRACE LUTHERAN CHURCH | TACOMA, 1968

a-FRAME

CABIN EXAMPLES



REC. CABIN | GIFFORD PINCHOT NF, C.1965



REC. CABIN | MOUNT RAINIER, C.1960



LAKE EASTON RESORT | EASTON, C.1965

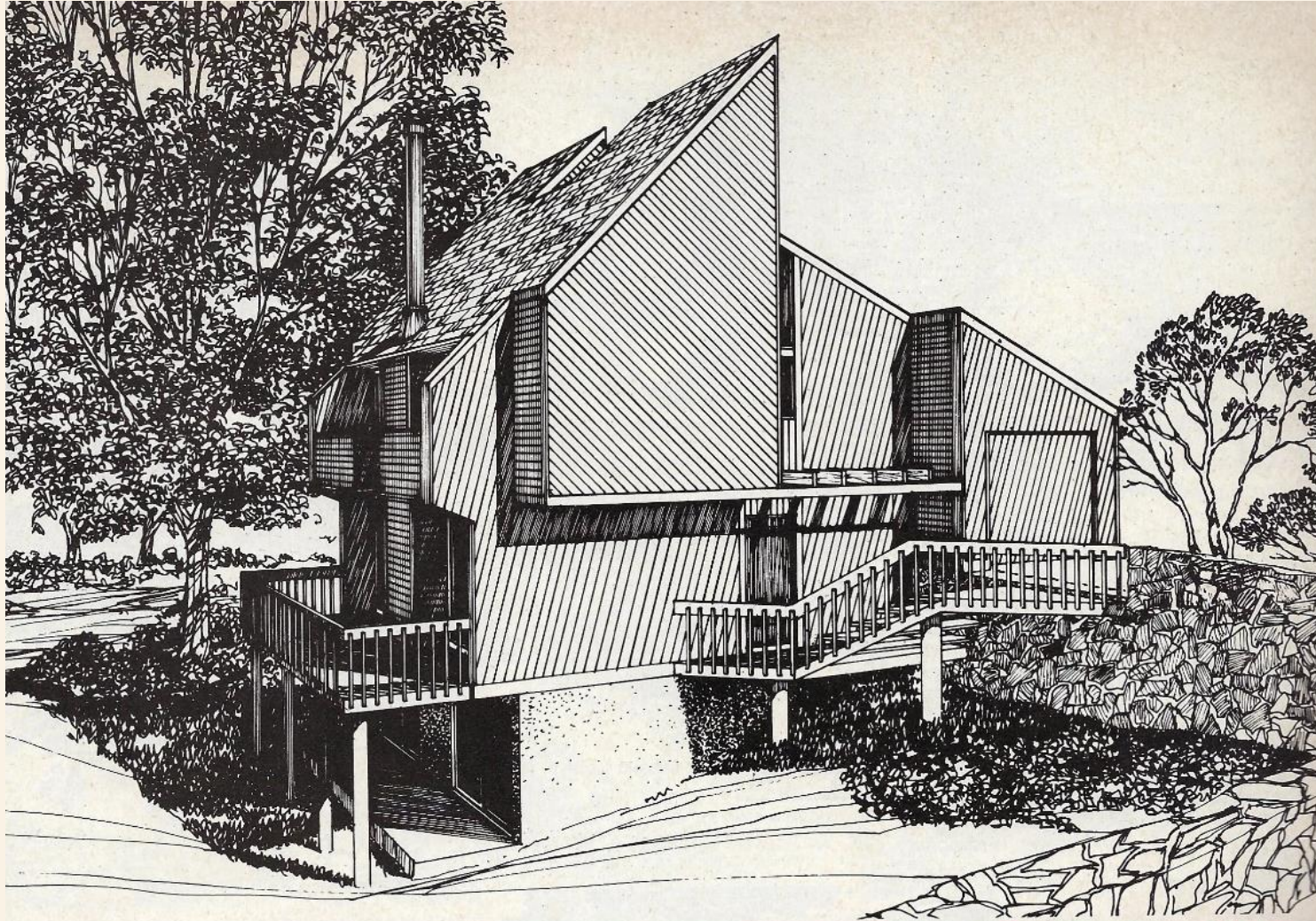


REC. CABIN | BENTON COUNTY, C.1970



REC. CABIN | LUCERNE, C.1968

HAPPINESS IS LIVING DIAGONALLY



Intriguing exterior design

House no. N79002

SHED

1960-1985

BOX-LIKE ASYMMETRICAL FORM

MULTIPLE SINGLE-SLOPE ROOFS IN DIFFERENT AND SAME DIRECTIONS

SIMPLE, NO-OVERHANG EAVE AND RAKE TRIM

VARIED WINDOW SIZES AND SHAPES



TYPICALLY 1 TO 1 1/2 STORIES TALL

VERTICAL, DIAGONAL, SHINGLE AND T-1-11 SIDING

RECESSED OR DOWNPLAYED ENTRY

HOUSE SEATTLE, C.1975

SHED

HISTORY

SEA RANCH
CONDOMINIUMS CA,
1965



HOUSE & GARDEN
PLANS - 1978

©1076-K-828

Contemporary Home Plans

A. Tarrant & Gordon Plan Books

Blueprints You Can Buy and Build
Plus Ideas and Sources for the Modern Home

Contemporary plan wraps around outdoor pool area
House No. 65

Angled rafters, a second-story balcony and national cedar or redwood siding are the striking exterior accents of this two-story, three-bedroom contemporary house. The facade gives no indication that the house wraps around and focuses on a wide outdoor living area and pool. One main-floor wing is devoted to outside living, it contains a kitchen, a shower, a dressing room, a mud room and a full bath, plus storage space for golf gear. In the visible wing a living room and dining room share a long 37' stretch of space and open to the pool area. Living room and kitchen are located in the third, connecting wing. Living room and kitchen are located in the third, connecting wing. Living room and kitchen are located in the third, connecting wing. Living room and kitchen are located in the third, connecting wing.

78

This relatively simple but superbly designed book is a striking example of the manner in which Turner's writing can become an integral part of a total architectural concept.

FOLLANSBEE

WHAT PRICE FORM, COLOR, FUNCTION?

HOUSE & GARDEN PLANS:
124 BEST-SELLING HOUSE
DESIGNS - 1978



ARCHITECTURAL RECORD-1978

SHED

RESIDENTIAL EXAMPLES



HOUSE | KENNEWICK, C.1978



CONDO | TUMWATER, C.1976



HOUSE | TACOMA, C.1978



HOUSE | OLYMPIA, C.1975



HOUSE | SPOKANE, C.1976

SHED

COMMERCIAL EXAMPLES



RIB EYE STEAK HOUSE | CHEHALIS, C.1975



GLACIER LANES | EVERETT, C.1972



N "J" STREET MEDICAL CLINIC | TACOMA, C.1973



WALTER WIDMEYER ARCHITECTURAL OFFICE | TACOMA, C.1958

SHED

ecclesiastical examples



BEAUTIFUL SAVIOR LUTHERAN CHURCH | TACOMA, 1963



LAKE HILLS COMMUNITY CHURCH | BELLEVUE, 1961

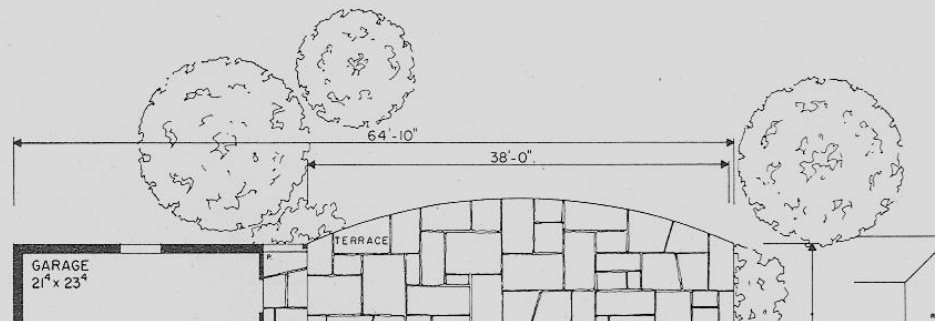


Design A 1757

1,406 Sq. Ft.-First Floor

1,115 Sq. Ft.-Second Floor/36,204 Cu. Ft.

This French Mansard style of two-story home is fast becoming very popular with those seeking a design with gracious formality. Study the practical floor plans and list the differences. Which do you prefer?



Mansard

1960-1980

ROOF OFTEN ON MORE THAN ONE LEVEL

OVERSIZED MANSARD ROOF HIDING ONE FLOOR

SOME EXAMPLES
HAVE FLARED EAVE
LINES REFLECTING
A FRENCH
PROVINCIAL MODE

DEEP SET
WINDOWS IN
MANSARD

ELONGATED
WINDOWS AND
DOORS BREAK
THROUGH EAVE LINE

RECTANGULAR
FORM

RECESSED ENTRY

BRICK,
T-1-11 AND
SHINGLE SIDING
FOUND

A photograph of a two-story house with a mansard roof. The house has a white garage door on the left, a recessed entry on the right, and several windows, including a prominent deep-set window in the mansard. The roof is dark shingled. The house is surrounded by a green lawn and some shrubbery. An American flag is visible on the left side of the house.

HOUSE KENT, C.1970

dahp
DEPT. OF ARCHAEOLOGY +
HISTORIC PRESERVATION

Mansard HISTORY



RECORD HOUSES
1968

3 FOR THE MANSARD

CUT LABOR COST WITH Shakerstown 3-PLY 8" PANELS

- 1. BARN SHEET PANELS**
Save and speed up construction with Shakerstown 3-PLY 8" panels. They are made of three layers of plywood, with a decorative finish on the outside. They are easy to install and require no special fasteners.
- 2. BARN SHEET PANELS**
Shakerstown 3-PLY 8" panels are the most economical way to finish a mansard roof. They are made of three layers of plywood, with a decorative finish on the outside. They are easy to install and require no special fasteners.
- 3. SHINGLE TEXTURE PANELS**
Shakerstown 3-PLY 8" panels are the most economical way to finish a mansard roof. They are made of three layers of plywood, with a decorative finish on the outside. They are easy to install and require no special fasteners.

Shakerstown
FIRST NAME IN CEDAR SHAKES

Shakerstown Corporation
10000 1st Ave. N.E.
Bellevue, WA 98004
Phone: 425-452-1000

EXCITEMENT... in the French Provincial Mood!

Featured Seattle Times Home of the Week in Olympic Bride Estates made History...

AN AUTHENTIC MANY COLORS COLOR HOME

Active Realty, Inc.
2512 190th S.W., Lynnwood 98048
PH. 8-1120

'73 CAN BE YOUR YEAR TO OWN A CUSTOM DESIGNED, CUSTOM BUILT CAPP HOME

SAVE 20% TO 40%. You can afford a new home! The Capp Homes Way of building can save you 20% to 40%. Capp carpenters erect and enclose your home on your lot. You can save 20% by acting as your own contractor and subcontracting the finishing... up to 40% by doing the easy finishing yourself. Free plans service—use ours, yours, or the best of both. Low cost financing—the closing costs, points, or hidden charges. Make 1973 your year for a new Capp Home.

ASK ABOUT OUR CONSTRUCTION LOAN PLAN

CAPP HOMES
A Division of C.P. Evans Products Company

Call Front: 425-452-1000
Bellevue, WA
PH 8-1120

Fin Builders: 354-1461
Bellevue, WA
PH 8-1120

MAIL COUPON TODAY

TO: CAPP HOMES
425 Pacific Highway South
Kent, Washington 98032
Please send me details on Capp Homes.

Name: _____
Address: _____
City: _____ State: _____ Zip: _____
Phone: _____ County: _____
 I own a lot I don't own a lot but would get one.

'LIKE NO OTHER McGRATH DEVELOPMENT'

SEATTLE TIMES' OPEN HOUSE SPOTLIGHTS COMPTON GREEN

... this is the way Elizabeth Wright Evans described Compton Green, site of the beautiful mansard roof house which was selected as last Sunday's "SEATTLE TIMES' Open House." Those who came to see this architect-designed home were pleased and surprised that such a selective yet secluded community could be so close to Seattle (it's inside Bellevue city limits) and yet be so wonderfully protected to retain its natural, forested setting.

Designed by an award-winning architect, the new house features four bedrooms, plus a private sitting room adjacent to the stately master bedroom, which opens onto a second patio. Other features include a brick entry court, sunken living room, formal dining room, family room and oversized double garage.

SEATTLE'S LANDMARK ADDRESS...
COMPTON GREEN
McGRATH CORPORATION

SEATTLE TIMES
JULY 16, 1967

SEATTLE TIMES
AUGUST 11, 1968

McDonald's "New Look" for the 70's

We're quite proud of our new look and modern design at McDonald's on South Sixth. Additional serving areas for your convenience... and an attractive interior designed for comfort.

Our remodeling is now complete and we invite you to stop out today or anytime soon in the 70's to see our "new look" at McDonald's.

2849 South Sixth St.
1825 South Main Ave.

French Provincial in Newport Shores

OPEN HOUSE: Planned for a family with child, address, this sophisticated French Provincial home was designed by Wilton Lomlin, Le Jolie, Calif. architect. The house is a 2,600 Sq. Feet in 2-Level House.

UPPER FLOOR: On the upper floor, there are two bedrooms, a bathroom, a study, and a terrace. The master bedroom has a walk-in closet and a private bathroom.

MAIN FLOOR: The circular traffic path, leading from the foyer, makes every room easy to access. The main living area is a large open-plan space with a fireplace, dining area, and kitchen. The kitchen features a breakfast room and a terrace.

DRIVING DIRECTIONS: From the airport, take I-5 North to Exit 157. Turn right on Pacific Highway South. Turn right on 28th Avenue. Turn right on 28th Avenue. Turn right on 28th Avenue. Turn right on 28th Avenue.

THE DRIVING ROOM: The driving room is a large open-plan space with a fireplace, dining area, and kitchen. The kitchen features a breakfast room and a terrace.

JUST ART NEW SH
SEATTLE TIMES DECEMBER 20, 1964

Mansard

RESIDENTIAL EXAMPLES



HOUSE | ANACORTES, C.1978



HOUSE | PUYALLUP, C.1975



HOUSE | TACOMA, C.1980



HOUSE | OLYMPIA, C.1970

Mansard

RESIDENTIAL EXAMPLES



HOUSE | OLYMPIA, C.1975



DR. SONNELAND HOUSE | SPOKANE, C.1972



HOUSE | BELLEVUE, 1966



HOUSE | VANCOUVER, C.1978

Mansard

MULTI-FAMILY examples



APARTMENT SEATTLE, C.1965



APARTMENT BELLEVUE, C.1972



APARTMENT SEATTLE, C.1970



APARTMENTS RENTON, C.1978

Mansard

COMMERCIAL EXAMPLES



LAW OFFICE | TUMWATER, C.1978



BUILDING | OTHELLO, C.1972



BUILDING | WALLA WALLA, C.1978



TIMBERLINE BUILDING | VANCOUVER, C.1978

ENTER THE WORLD OF BUCKY



GEODESIC DOME

1960-PRESENT

SPACE FRAME ROOF COMPRISED OF TRIANGULAR-SHAPED PANELS

COPULAS OFTEN FOUND AT PEAK OF ROOF

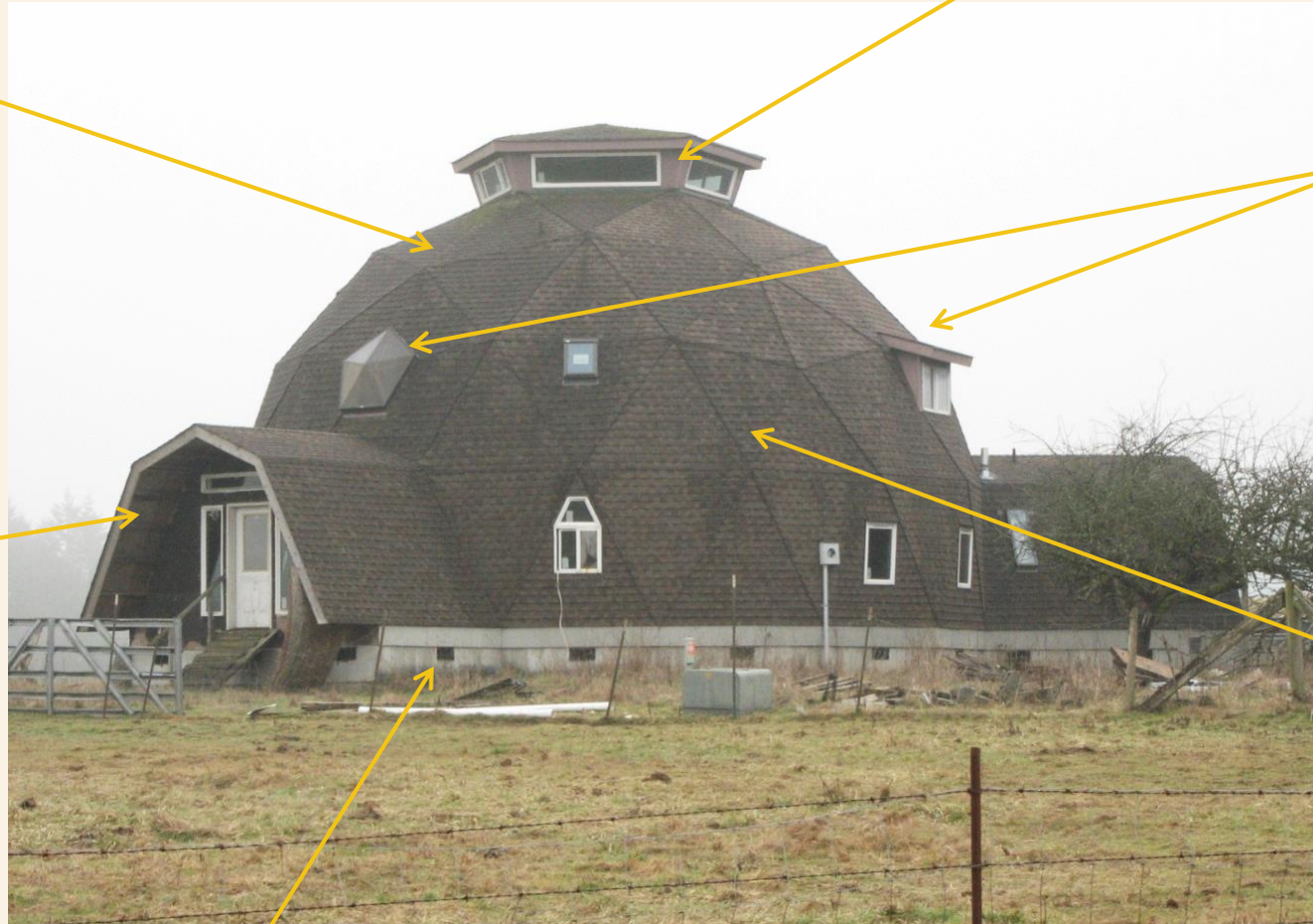
STRUCTURE IS COMPOSED OF WOOD OR METAL FRAME

SKYLIGHTS AND DORMER WINDOWS TYPICAL

GAMBREL AND FLAT ROOF WINGS OFTEN ADDED AS ENTRY

ASPHALT OR CEDAR SHINGLES, METAL, PLASTIC, AND FIBERGLASS COVER PLYWOOD PANELS

SLIDING GLASS ENTRY DOORS ARE COMMON



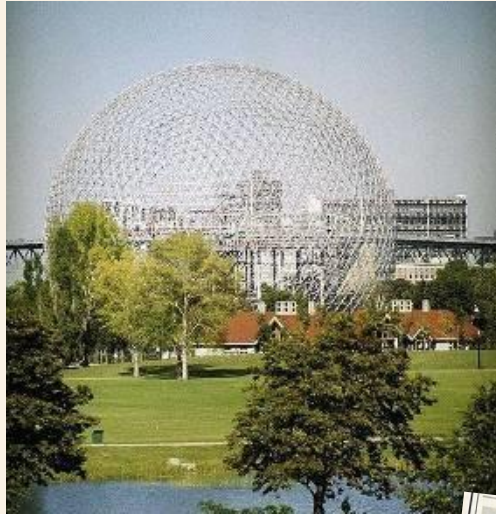
CONCRETE FOUNDATION

HOUSE THURSTON COUNTY, C.1975

GEODESIC DOME

HISTORY

FORD ROTUNDA DOME
BUCKMINSTER FULLER,
DETROIT, MICHIGAN, 1953



US PAVILION AT EXPO '67
BUCKMINSTER FULLER, MONTREAL, CANADA, 1967



EPCOT CENTER BUCKMINSTER FULLER, ORLANDO, FLORIDA, 1967



at
to
i-
r-
i-
n
ur
p.
ill
ne
es
at
He
es
or
n-
he
is

R. BUCKMINSTER FULLER

Brock Evans, a lawyer who represents conservation groups, will speak on the "Environmental Crisis in the Pacific Northwest" at 8:15 p.m. His presentation will be followed by a film.

Friday's program will begin at 1 p.m. with a speech on "Environmental Concerns

All-In-One Playground!

DOME CLIMBER

The kids will find hours of fun climbing and swinging on this ingenious structure—and it will last for years! Based on proven mathematical concepts of world-famous architect Buckminster Fuller, Dome Climber supports literally unlimited weight loads—is designed so stress is equally shared in all areas. Made of rugged red and white, all weather, tubular steel, all bolts cushioned with rubber. Sets up in minutes. Converts instantly to play-home or tent with your canvas. Sets delight your tot-to-teens with the excitement of a Dome Climber in their own backyard. Order today! \$29.98 express charges collect.

Immediate shipment. Satisfaction guaranteed. Send check or money order.

HOBBI INC. DEPT. 8124, FLUSHING 52, N. Y.

SEATTLE TIMES, APRIL 5, 1970

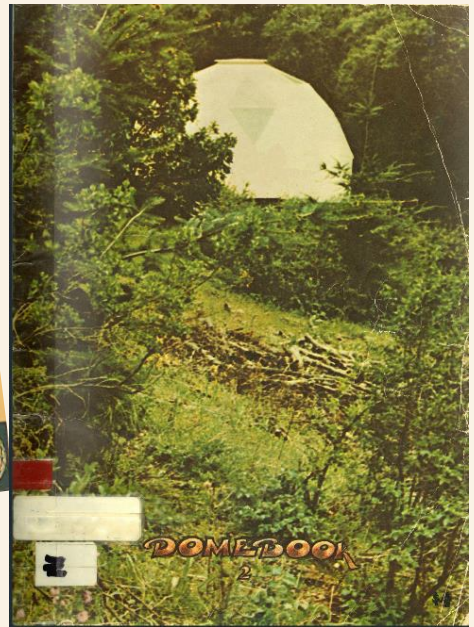
GEODESIC BUILDING CONCEPT

You Are Invited To Visit Our Cathedrale Domes At
701 Vista Del Mar
Rio Del Mar (Aptos) Ca.

CATHEDRALITE DOMES
P. O. BOX 112, SANTA CRUZ, CALIFORNIA 95067
TEL. 461-1111

CATHEDRALITE DOME BOOK 2, 1971

DOME BOOK 2, 1971



GEODESIC DOME

RESIDENTIAL EXAMPLES



HOUSE | PORT TOWNSEND, C.1967



HOUSE | MOSES LAKE, C.1982



HOUSE | CLARKSTON, C.1970



HOUSE | LACEY, C.1982



HOUSE | EATONVILLE, C.1980

GEODESIC DOME

RESIDENTIAL EXAMPLES



HOUSE | SHELTON, C.1970



HOUSE | FRIDAY HARBOR, C.1982



HOUSE | GIG HARBOR, C.1982



HOUSE | WOODINVILLE, C.1967



HOUSE | ELLENSBURG, C.1980

GEODESIC DOME

COMMERCIAL EXAMPLES



DEITRICH ACTIVITY CENTER | WALLA WALLA, 1977



MICRO-DOME BINGO HALL | MILTON, 1983



CATHEDRALITE OFFICE | TACOMA, 1978



TACOMA DOME | TACOMA,
1981-83

LIVE BENEATH THE EARTH



EARTH SHELTER

1975-1985

VARIOUS TYPES OF VEGETATION COVERING EXTERIOR ELEVATIONS

STRUCTURE IS
COMPOSED OF
CONCRETE OR METAL
FRAME

MOUND OF EARTH
COVERING
SIDEWALLS AND
ROOF STRUCTURE



SKYLIGHTS AND CUPOLA
WINDOWS ALLOW LIGHT INTO
INTERIOR ROOMS

RECESSED ENTRIES AND
DOORS CUT INTO SIDE OF HILL

UNUSUAL SHAPED ENTRY DETAIL

HOUSE CHENEY, 1983

EARTH SHELTER HISTORY



WASHINGTON AGGREGATES AND CONCRETE ASSOCIATION
Presents a seminar

EARTH SHELTERED STRUCTURES

OCTOBER 4
8 am to 4 pm
RED LION
SEA/TAC
MOTOR
INN
18740 Pacific Highway South
Seattle

Fee of \$40.00 includes luncheon and your own personal copies of PCA BULLETIN Earth Integrated Building Construction, and Earth Sheltered Housing Design, the leading reference text developed by the University of Minnesota.

OUTSTANDING SPEAKERS INCLUDE:

Dennis Scife "History of Earth Sheltered Housing"
Terra-Doma Corp.

Jerry Allen "Earth Sheltered Structures"
University of Minnesota

Gary Swenson "Engineering Evaluation"
Smith & Swenson, Inc.

Tim Hayes "Heating Methods"
American Solar Design Corp.

Don Stephens "Financing Earth Sheltered Structures"
Consultant, Spokane

Gerald Adkins "Specific Structures—Detailed Reports"
Architect

I am enclosing my check for \$40.00 for preregistration.

name _____
company _____
address _____
telephone _____

Mail today to: Washington Aggregates and Concrete Association
2366 East 4th Avenue East • 233
Seattle Washington 98102
(206) 329-7744

MALCOLM WELLS
Underground Designs

TWO IDENTICAL (AND IDEAL) SIDE-BY-SIDE BUILDING LOTS, AND THE REVIVAL OF ONE...

For years, architects have been advising their clients to build on beautiful wooded lots, preferably ones with streams, views, good soil, etc. But now at last, we know better. Such lots should be left alone!

Our job is to restore life to this worn-out American land, and there is no more satisfying way to do it than to build a life-giving house there, done in such a way that human needs and nature's needs begin to coincide.

UNDERGROUND DESIGNS, 1977

SEATTLE TIMES,
SEPT 24, 1979

HOMES IN THE EARTH
Design Concept Associates

EARTH SHELTER DIGEST
& energy report

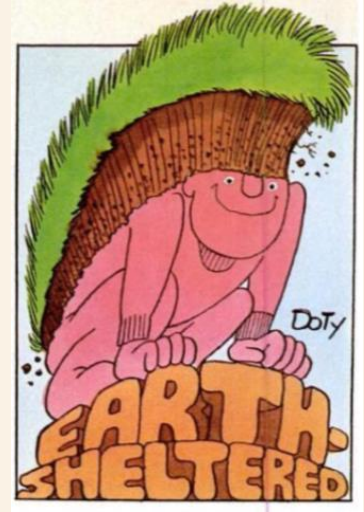
NO. 9
May/June 1980
\$2.50

DEPT. OF IDAHO

DEC 22 1980

Lenders and Energy
Earth-Powered Air
Congressional
Action
Commercial
Construction

EARTH SHELTER DIGEST,
MAY/JUNE, 1980



EARTH SHELTER

HISTORY

Earth Shelters — North America



EARTH SHELTER

RESIDENTIAL EXAMPLES



WAWAWAI COUNTY PARK CARETAKER COTTAGE | WHITMAN COUNTY, 1980



ELQUEST HOUSE | CHENEY, 1983



SCAFE HOUSE |
LAKE STEVENS, 1980



HOUSE | SPOKANE, 1981

EARTH SHELTER

COMMERCIAL | INSTITUTIONAL EXAMPLES



BLUE RIDGE ELEMENTARY SCHOOL | WALLA WALLA, 1982

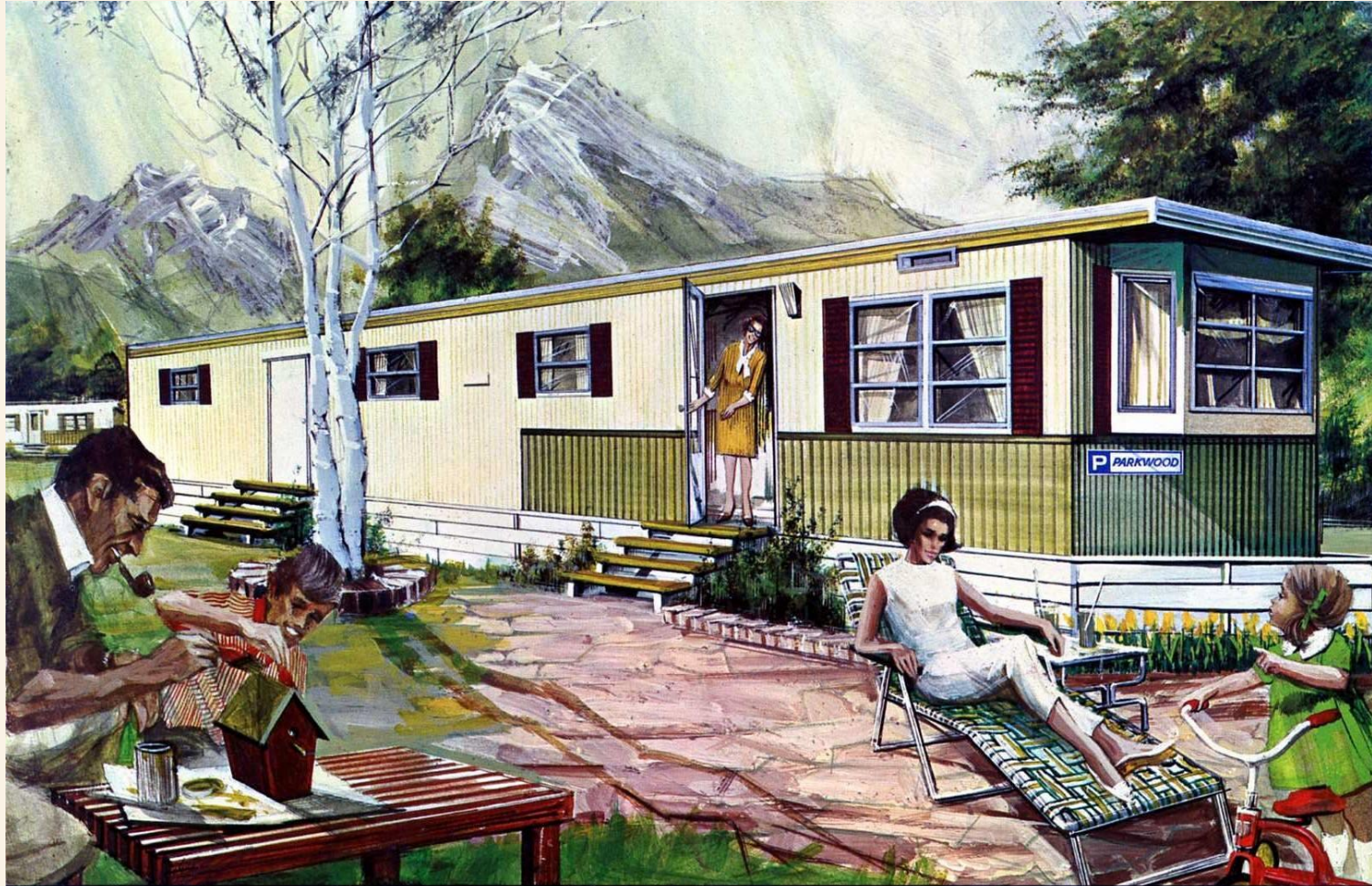


RICE PADDY RESTAURANT | BELLEVUE, 1973



CENTRAL PREMIX CONCRETE | SPOKANE, 1980

a new way OF LIFE



PARKWOOD – A new approach to total living

PARKWOOD

MOBILE HOMES

1950-1974

VARIOUS TYPES OF ROOFING STYLES / PROFILES

VARITY OF DESIGN
DETAILS AT HITCH
END OF DWELLING

PULLOUT AND
ATTACHED PERIOD
AWNING

STRUCTURE IS
COMPOSED OF STEEL
BASE WITH WOOD
FRAME CLAD IN METAL



ALUMINUM WINDOWS OF
VARIOUS SIZES WITH METAL
AWNINGS

EXTERIOR CLAD IN METAL
SIDING OF VARIOUS PATTERNS

TRAILER HITCH HIDDEN OR EXPOSED

MOBILE HOME SHELTON, C.1965

MOBILE HOMES

HISTORY

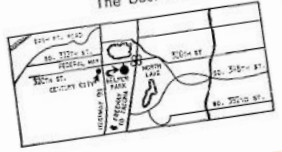


BELMOR **b** PARK

ADULT MOBILE HOME LIVING AT ITS FINEST

Live in exciting new Belmor Park and spend your driving time on the golf course. How? An especially beneficial location puts work fewer minutes away and recreation in your backyard. Yours are a private 9-hole golf course and a fabulous Country Clubhouse.

Your spacious lot will accommodate the most luxurious mobile home and still provide off-street parking for two cars. The best lots go first—See Belmor Park TODAY!!



DRIVING DIRECTIONS:--
 Conveniently located between Freeway and U.S. 199 on South 320th. Take Federal Way exit 1 off Freeway.

DRIVE OUT TODAY
 OR CALL
 MR. BILL SCHNEIDER—VE 9-0517
 BELMOR MOBILE HOME PARK

SEATTLE TIMES, MAY 7, 1967

THE MAGNIFICENT
CHAMPION
 FOR 1957

CHAMPION HOME BUILDERS COMPANY • DRYDEN, MICHIGAN

A better improved . . . more beautiful mobile home

ALL CLIMATE
SPACEMASTER
 FOR 1961

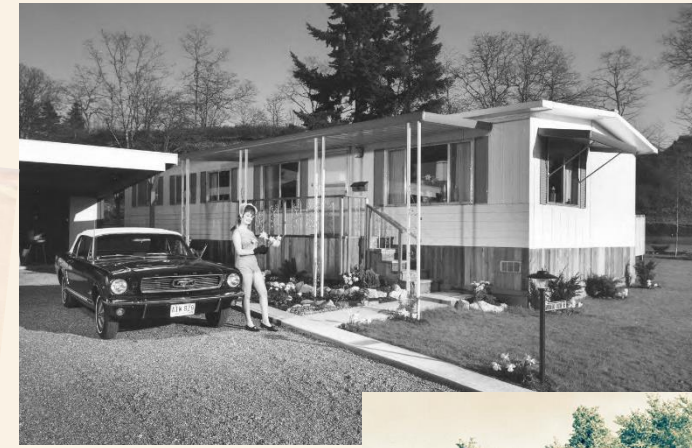
NEW FEATURES:
 NEW FRONT DOOR
 NEW EXTERIOR

The 1961 Spacemaster® has been equipped with plastic new features and is completely air-tight. Spacemaster's new energy conserving plastic floor and roof will save you the cost of heating and air conditioning. The new vinyl carpeting is a new advanced floor finish.

Other features: New complete kitchen, built-in for their convenience and rugged construction are included, but all are optional on the "Spacemaster".

SEE A SAMPLE FOR FREE INFORMATION

SPACEMASTER
 MOBILE HOMES
 COMPANY
 P. O. Box 104, Midland, Oregon
 (409) 834-1000



MOBILE HOMES



DETRAYS MOBILE HOME PARK | OLYMPIA



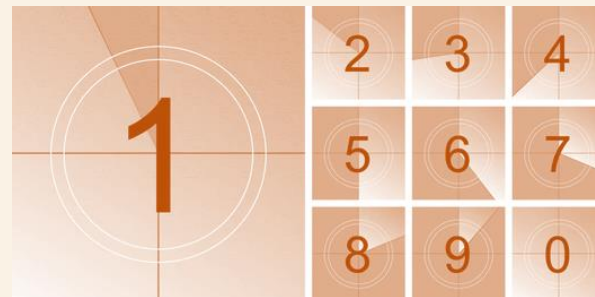
WINDSOR COURT MOBILE HOME ESTATES | TACOMA



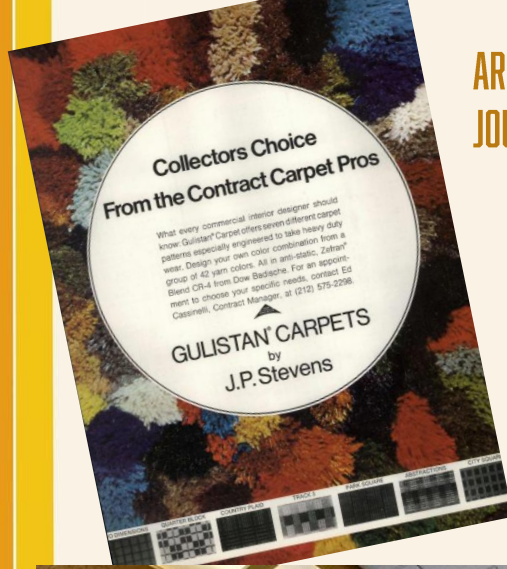
LEISURE MANOR MOBILE HOME PARK | ABERDEEN

TOP 10

DESIGN DETAILS FROM THE 1970S



1 SHAG FEST



ARCHITECTURAL JOURNAL- 1974



Shag Rakes keep any length shag looking great

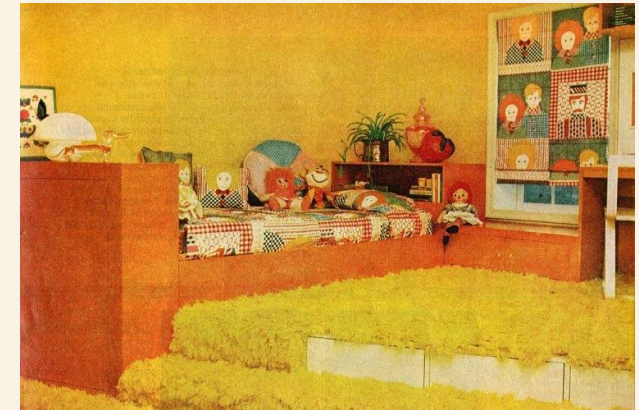
Y Good quality Shag Rake. Wood handle. 3 rows vinyl teeth. 13 inches wide, 48 inches long. Unassembled.
37 G 1033C—Shpg. wt. 1 lb. ...\$3.89

Z Our best Shag Rake. Brass-color metal handle; attractive woodgrain plastic inserts. Vinyl teeth. Short row lifts shag pluses. Long row straightens deep shags. 14x54 in. long. Unassembled.
37 G 1049C—Shpg. wt. 2 lbs. ...\$7.89

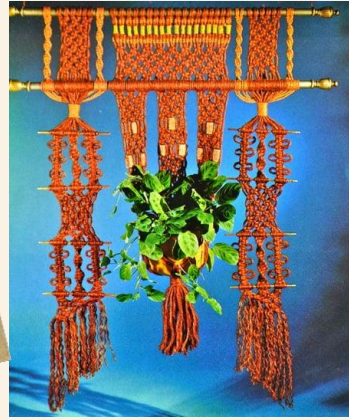


HOUSE + HOME - 1970

See pages 683 to 690 for complete Credit Terms and States where applicable



2 Macrame ALL DAY LONG

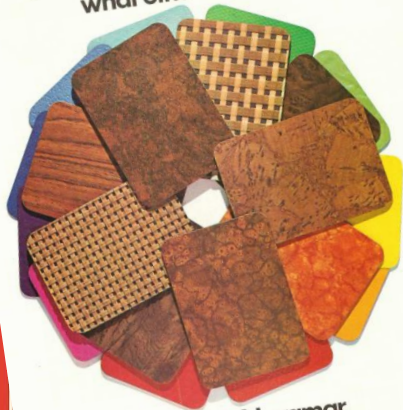


3 EVERYBODY MUST GET STONED



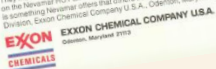
4 PLASTIC FANTASTIC

Uncommon means offering what others don't.



Presenting Nevamar, the uncommon plastic laminate.

How uncommon? Pick any high-pressure plastic laminate dimensional finish, and you've probably picked a Nevamar exclusive. In fact, our finish, and you've probably picked the new wave design bringing the dramatic new high-pressure laminate... 9 of them don't exist. The 3 standard... 12 Nevamar dimensional... all the beautiful patterns, colors and woodgrain... special new... all the beautiful patterns, colors and woodgrain... standard... They make for a quite uncommon sample chain. Call for the full-line... on the beautiful HGT LINE. 800-638-3300. As you might expect, it's... is something Nevamar offers that others don't. Call Nevamar... Division, Exxon Chemical Company U.S.A., Columbia, Maryland 21113.



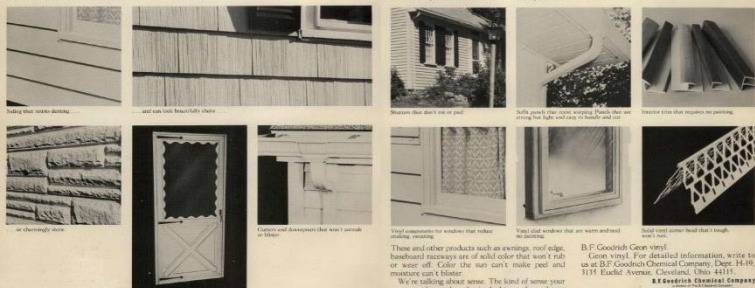
The Tupperware Idea: Colorful ways to save money on food by locking in the freshness of the food you have.



PROGRESSIVE ARCHITECTURE - 1973

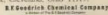
Geon vinyl protects a house from top to bottom and inside and out.

The kind of houses that your customers want. Houses that almost maintain themselves. Geon vinyl. The tough material. It has what it takes to make:



And that makes the difference in selling houses.

These and other products such as awnings, roof edge, handrails, playgrounds are of solid color that won't rub or wear off. Color the sun can't make fade and moisture can't blister. We're talking about Geon. The kind of name your customers have when they're looking to buy a house with practically no maintenance. And that takes...



Do something nice for a wall tonight



...or a shelf. Or a mantelpiece. Give them a sparkling personality. A reflection of your own tastes. Give them a covering of new Con-Tact® Brand "Chrome". With its self-adhesive back, Con-Tact Brand plastic is so easy to put up you can even do it yourself. And it's even easier to care for. Our "Chrome" comes in four patterns and colors including... show here. See them and all the other Con-Tact Brand styles at fine stores everywhere. So do something nice for your wall tonight and help put an end to the wall blab.



INFLATABLES

A New Concept for the Casual Home— Comfortable, Versatile, Practical

- Heat-sealed, heavy-gauge triple-laminated vinyl
- Great gift ideas—a variety of styles!

HERE COME THE INFLATABLES! New and exciting modern seating comfort. Fun! Don't despair! Specifically for new and re-located of long-lasting, heavy-gauge vinyl with heat-sealed seams—no stitching. Folding. Use vacuum cleaner or standard air pump to inflate. Choose from a variety of styles, colors, patterns. Patch kit included.

A & F HERE COME THE INFLATABLES! New and exciting modern seating comfort. Fun! Don't despair! Specifically for new and re-located of long-lasting, heavy-gauge vinyl with heat-sealed seams—no stitching. Folding. Use vacuum cleaner or standard air pump to inflate. Choose from a variety of styles, colors, patterns. Patch kit included.

[A] Aquarius Love Seat. Heavy-gauge, triple-laminated vinyl. 46x31x25 in. high (inflated). Color: 02 black, 03 red. Stair color number and name: X 802-1925 C—Mating weight: 3.50 lbs. 17.44
[B] Square Mission. Over heavy-gauge vinyl. 18x18x20 in. high (inflated). Color: 02 black, 03 red. Stair color number and name: X 802-1941 A—Mating weight: 1.50 lbs. 3.98
[C] Lounge Chair. Heavy-gauge vinyl. 31x24x28 in. high (inflated). Color: 02 black, 03 red. Stair color number and name: X 802-1991 C—Mating weight: 3.50 lbs. 9.44
[D] Aquarius Chair. Heavy-gauge vinyl. 30x31x25 in. high (inflated). Color: 02 black, 03 red. Stair color number and name: X 802-1917 C—Mating weight: 6 lbs. 14.44
[E] Spread Chair. Vest back. Heavy-gauge vinyl. 41x40x25 in. high (inflated). Color: 02 black, 03 red. Stair color number and name: X 802-1933 B—Mating weight: 5.50 lbs. 12.44
[F] Modern Chair. Heavy-gauge vinyl. 31x28x28 in. high (inflated). Color: 02 black, 03 red. Stair color number and name: X 802-1909 C—Mating weight: 3.50 lbs. 12.44

Child size inflatables sold on page 299. SAVE THIS CATALOG—cover anything on these two pages till August 25, 1972. Use Penney's Time Payment Account—see page 248.

JC PENNEY CATALOGUE - 1970

The walls were roughed last with



anything less. Con-Tact plastic smooths in without a nail. I'll never wipe (or wash) that grin off its face. Use your kids' rooms, for bedrooms, too. Plus Con-Tact products are Manufacture's, Incorporated. THE CORNER. AROUND THE WORLD.



5 HELLO NATURE

interiors



You build a more desirable home when you open it for natural light through single or multiple skylights of Plexiglas acrylic sheet. Standard skylights of Plexiglas are available in a range of shapes and sizes to permit the most efficient use of space and to permit the daylighting of all types of rooms, or even to complement recessed lighting. In addition to a complete line of grey and bronze tints that control solar heat and glare, you can choose from a range of colors. The light weight of Plexiglas makes installation of Plexiglas economical. The toughness of Plexiglas insures safety and ease of maintenance. The time-proven weatherability of Plexiglas makes certain that your customers will be happy over the years with their Home Daylighting with Plexiglas and the names of skylight manufacturers.

DAYLIGHT WITH PLEXIGLAS®

FOR MORE DESIRABLE HOMES.

ROHM & HAAS

Circle 50 on Reader Service Card

HOUSE & GARDEN 1970 48

hardboard interior panels

MASONITE CORPORATION

SOME GREENHOUSE WINDOWS GET ALL THE BREAKS. SOME DON'T.

INTRODUCING WINDO-GREEN®

A GREENHOUSE WINDOW MADE OF LIGHTWEIGHT, VIRTUALLY UNBREAKABLE* TINTED G.E. LEXAN®.

There's an important selling point with buyers concerned about safety and security. Plus, Windo-Green will save on energy too, insulates better than ordinary glass.

But the good news to builders and developers is that Windo-Green is so easy to handle and install. There's no assembly required since Windo-Green is made from a single sheet of lightweight G.E. Lexan that requires no extra structural support. And Windo-Green comes in five standard window sizes.

For all the details, call or write the Consumer Products Division at Acorn Building Components, 12620 Westwood, Detroit, Michigan 48223. Or call (313) 272-5700.

ACORN BUILDING COMPONENTS INC.
12620 Westwood, Detroit, Mich. 48223
Visit us at Booth 1893 during the NAHB Show.

HOUSE+HOME - 1974

Plexiglas® solves skylight design problems

You have a virtually unlimited choice of ready-made, well-designed and highly functional skylights to work with when you specify the one and only with proven plastic skylight glazing material—Plexiglas acrylic plastic.

Daylight shapes in Plexiglas include domes and cylinders in circles, squares and squares. Both single and squares are specified in

colorless, in light-diffusing white translucent or in solar-controlling transparent and grey tints.

Plexiglas is the only plastic skylight material that has more than a quarter of a century of successful outdoor use to prove its weather and breakage resistance. Its daylight transmitting properties are unsurpassed by other skylight glazing materials.

In addition to standard skylight applications, Plexiglas is used in heat and smoke venting domes, ventilating domes and roof scuttles.

Sizes up to 36" x 36" are available as standard. Larger sizes are available on request from skylight manufacturers across the country. Write for the names of suppliers near you.

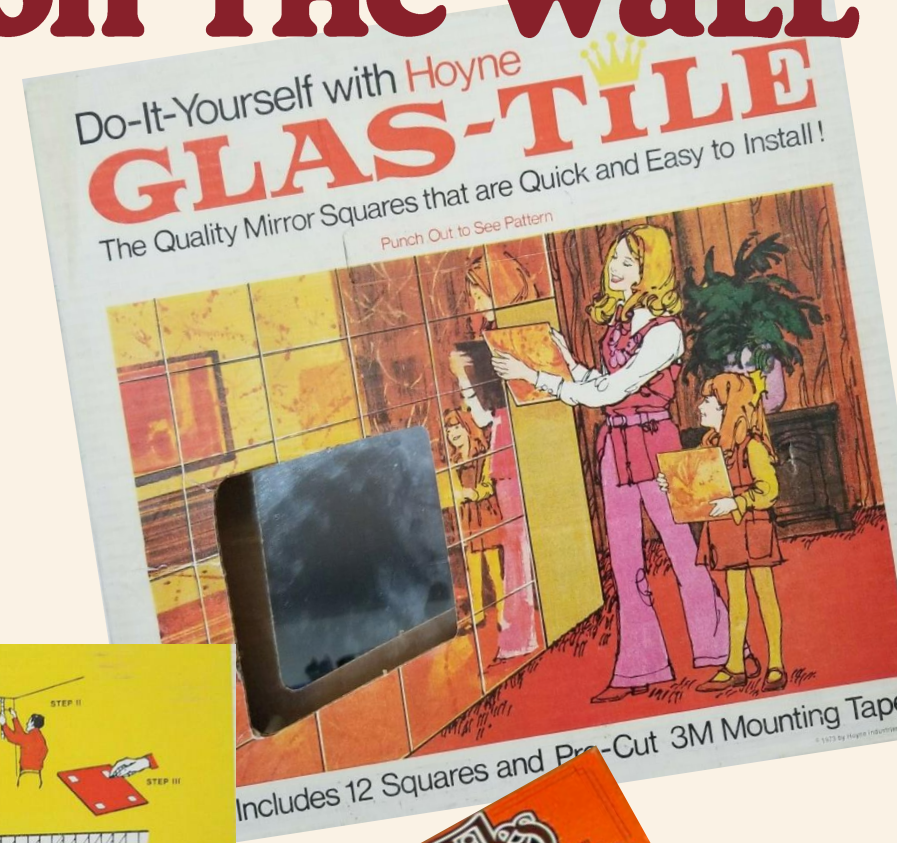
Plexiglas is made only by **ROHM & HAAS**



HOUSE & GARDEN - 1970



6 MIRROR MIRROR ON THE WALL



INSTRUCTIONS:

STEP I • AREA TO BE COVERED
Surface to be tiled must be level and free of grease or flaking paint. Wall-papered surfaces must be free of blisters, tears, or flaked surfaces.

STEP II • MEASURING THE AREA TO BE COVERED
If you are doing an entire wall, it is best to start slightly in from the edge of the wall and slightly down from the ceiling to allow for unevenness in the wall. If you are doing a smaller area, determine the exact area to be covered. Simply square off the upper left-hand corner of the area to be covered by using a level square or plumb line. This will give you your starting point.

STEP III • UNPACKING AND APPLYING THE TAPE
Carefully unpack the tile. Place tile face down on a covered surface and apply one tab of our pre-cut tape to each of the four corners of the tile slightly in from the edge. Then remove the backing from the tape and apply the tile in the area desired. HANDLE THE TAPE BY THE EDGES ONLY SINCE TOUCHING THE TAPE WILL RENDER IT INEFFECTIVE. MAKE SURE THE TILE IS IN THE PROPER POSITION BEFORE APPLYING SINCE IT IS DIFFICULT TO SHIFT ONCE APPLIED. Make sure the first tile applied is in the proper position before proceeding further.

STEP IV • COMPLETING YOUR WALL
Continue applying the tile until the entire row to be tiled is finished. Upon completion of the first row, continue to the second row until the entire area is covered.

STEP V • INSTRUCTIONS FOR CUTTING TILE
GLAS-TILE mirror tile can be cut by using our special glass cutter or any other good quality glass cutter.

- To cut place tile face up (paint side down) on a level hard table. It is best to cover the table to avoid scratching your furniture.
- Without special equipment you cannot cut circles or rectangles in a piece of glass. Should you wish to go around light switches or outlets, simply cut the glass straight lines and strip around this area.
- With a felt topped pen mark the surface of the glass on the spot to be cut.
- Place a straight edge (a ruler is fine for this purpose) along the intended line of the cut.
- Hold the glass cutter firmly and starting at the top edge score along the straight edge. Once you have started do not stop or lighten the pressure on the glass cutter as this will produce an uneven cut. Do not retrace your cut as this will dull the cutter.
- Holding the glass at the edge on either side of the cut gently snap it, which will divide the glass along the cut. CAUTION: Watch out for sharp edges.
- Practice on an old piece of glass until you are familiar with the above procedure.

STEP VI • GLAS-TILE MIRROR TILE CAN BE REMOVED
Simply use a long scraper and scrape between the mirror and the wall thereby breaking the bond of the tape. Do not attempt to reuse the old tape. Simply cut new tape alongside the old piece and follow the above steps to re-apply in a new area. New tape is available. If you have difficulty purchasing this tape, write us and we will advise you where it may be obtained.

CLEANING TILE
Clean with our GLAS-TILE mirror cleaner or any good glass cleaner. Certain types of glass cleaner can be detrimental to the life of the mirror. Solutions containing sulfur and/or other strong ingredients can create scuffing on a mirror.



7 a TROPICAL ADVENTURE

Save \$8 to \$14 on 4-piece Sets
 Look for the "A" Sign in the Store!
 *\$189.80 *\$144.80

HAND WOVEN Willow
 Decorative frames in your choice of spangle, white enamel or 100% nylon tufted cushions in your choice of 4 bright colors.

A 4-piece set including sofa, loveseat, chair and ottoman. \$189.80

B 4-piece set including sofa, loveseat, chair and ottoman. \$144.80

C 4-piece set including sofa, loveseat, chair and ottoman. \$144.80

D 4-piece set including sofa, loveseat, chair and ottoman. \$144.80

E 4-piece set including sofa, loveseat, chair and ottoman. \$144.80

F 4-piece set including sofa, loveseat, chair and ottoman. \$144.80

G 4-piece set including sofa, loveseat, chair and ottoman. \$144.80

H 4-piece set including sofa, loveseat, chair and ottoman. \$144.80

I 4-piece set including sofa, loveseat, chair and ottoman. \$144.80

J 4-piece set including sofa, loveseat, chair and ottoman. \$144.80

K 4-piece set including sofa, loveseat, chair and ottoman. \$144.80

L 4-piece set including sofa, loveseat, chair and ottoman. \$144.80

M 4-piece set including sofa, loveseat, chair and ottoman. \$144.80

N 4-piece set including sofa, loveseat, chair and ottoman. \$144.80

O 4-piece set including sofa, loveseat, chair and ottoman. \$144.80

P 4-piece set including sofa, loveseat, chair and ottoman. \$144.80

Q 4-piece set including sofa, loveseat, chair and ottoman. \$144.80

R 4-piece set including sofa, loveseat, chair and ottoman. \$144.80

S 4-piece set including sofa, loveseat, chair and ottoman. \$144.80

T 4-piece set including sofa, loveseat, chair and ottoman. \$144.80

U 4-piece set including sofa, loveseat, chair and ottoman. \$144.80

V 4-piece set including sofa, loveseat, chair and ottoman. \$144.80

W 4-piece set including sofa, loveseat, chair and ottoman. \$144.80

X 4-piece set including sofa, loveseat, chair and ottoman. \$144.80

Y 4-piece set including sofa, loveseat, chair and ottoman. \$144.80

Z 4-piece set including sofa, loveseat, chair and ottoman. \$144.80

The Cane Mutiny

One of the most exciting things at current home furnishing and building as a design for upholstery, fabrics, wall and floor coverings.

There's been a cane revolution. So we decided to raise some cane, too. Cane tile from Mid-State. A new Green. Architects will appreciate its versatility, and decorators will love



The cane design comes on matte white, in 4 1/2" x 4 1/2". And by the way, cane isn't the only thing we've been up to: we also designed a new ceramic tile with a bamboo motif.

For more information write for a free brochure for a sample kit, including bamboo and cane tiles. Send \$1.00 to Mid-State Tile Company, P.O. Box 627, Lexington, N.C. 27292.

MIRACANE

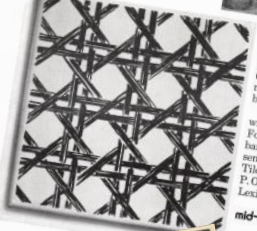
gives family room breeziness or adds a warmth and style that blends with all the good times of informal living

A \$199.80

B \$29.80

C \$76.80

D \$62.80



The Whole Year 'Round... This Versatile Furniture Works Wonders All 'Round The House



Ashcraft

Smart national style maker Ashcraft, "America's choice" for bringing fresh character to living rooms.

Both their trained cabinet makers and the quality of all Heywood-Wakefield Furniture.

In dinette—and many a full size dining room—Ashcraft sets the scene for pleasant dining.

HANDMADE! Ashcraft liberally brings over with smart design for year 'round usefulness! Its pleasant lines of settings all 'round the house—and long years of midlife-stress-free Ash and Birch, See Ashcraft's new at your favorite furniture or department store, or write for free illustrated catalogue showing its extended variety. Heywood-Wakefield Company, Dept. LH-13, Gardner, Mass.

Smaller Ashcraft follows the seasons in acres of homes—adds smart comfort to pleasant summer enjoyment of porches or covered terraces, and makes indoors its masterpiece.



WICKER WONDERLAND

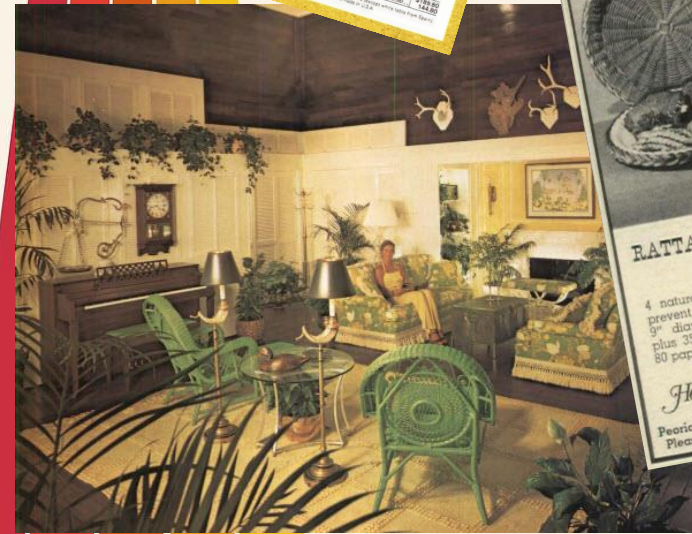
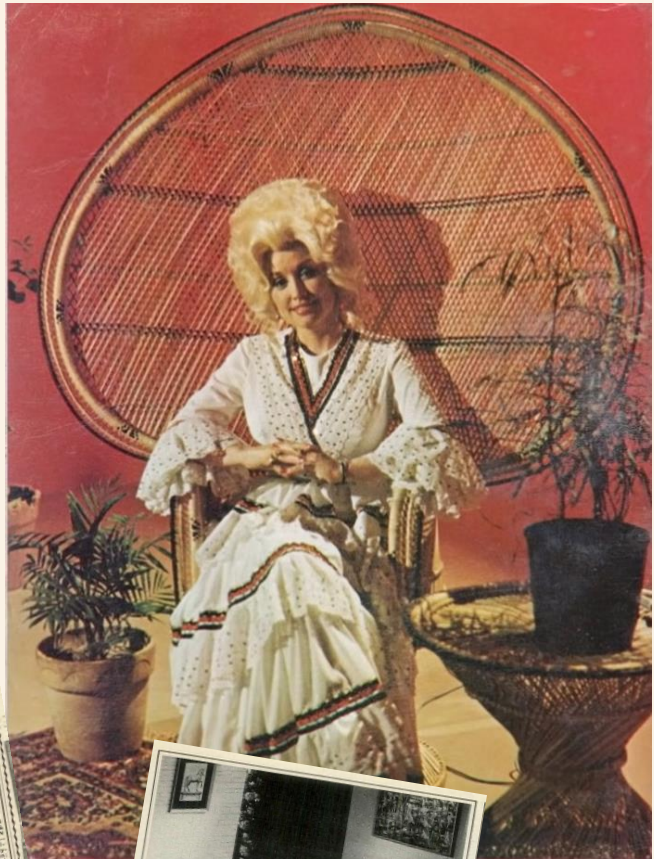
WILLOW CHEST
 Drive... \$19.80

ELPHANT TABLE
 \$29.80

HASSOCK STOOL-TABLE
 \$19.80

BATTAN
 \$29.80

Visit our warehouse showroom
Basket House
 83 W. Main St., Dept. H-13, Burlington, N.J. 07006



RATTAN PLATE HOLDERS AND LINERS

4 natural blond rattan plate holders prevent lumps and soggy paper plates! 9" diam. with braided edges. \$1.49 plus 35¢ ship. charge. Order #18457. 80 paper liners 99¢. Ppd. Order #18823.

Helen Gallagher
 Peoria, Illinois 61601 Dept. 106
 Please include your zip code

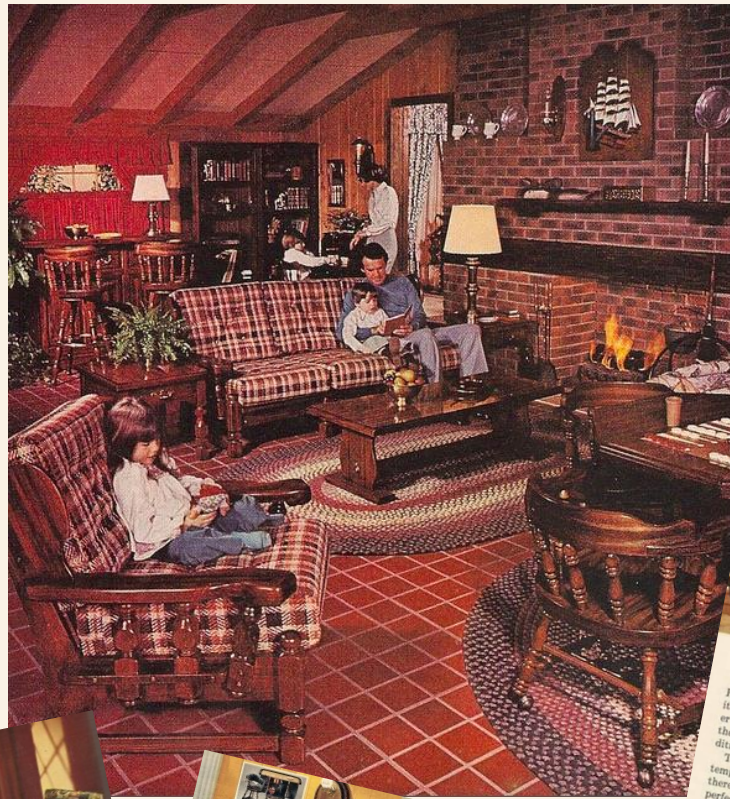
Write for **FREE** gift catalog

The GALLERY Collection

Careful styling and beautiful workmanship for those who appreciate leisure furniture with a purpose. It belongs in your home. Write for literature and name of nearest dealer.

FICKS FEED COMPANY
 "The Most Famous Name in Rattan Furniture"
 8900 Champlain Drive

8 PHONY COLONY



No kidding...an **EARLY AMERICAN** air conditioner

Pooled you? It looks like an heirloom doesn't or in disguise. Westinghouse thought it up—the first "furniture-designed" line of air conditioners ever made.

Take your pick... Early American, Contemporary, Traditional, French Provincial... there's a fine, hand-crafted cabinet to blend perfectly with your nicest furniture. Inside these handsome hardwood cabinets is the most efficient cooling instrument we've ever engineered. From 10 feet... 20 feet... even 30 feet away you can feel its cooling comfort. It gently spreads cooled, dried, filtered air to the farthest corner of the largest room. Yet this powerful instrument is as quiet as a purring kitten. A few feet away you can barely hear it.

Only your Westinghouse Dealer sells cooling power plus beauty. See the world's first selection of "furniture-designed" air conditioners. We never forget how much you rely on Westinghouse

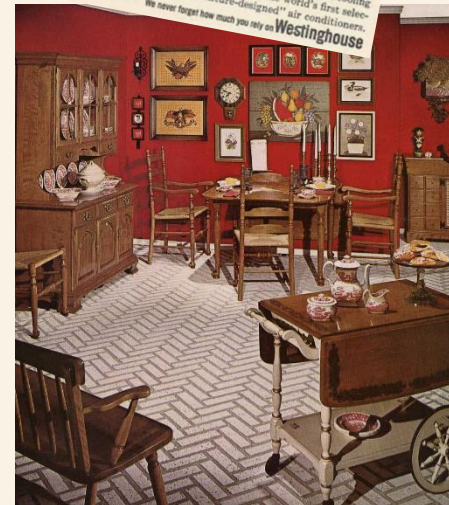


BARRELS for Fun and Entertaining

SAVE 97 399.00

SAVE 128 299.00

SAVE 132 415.00



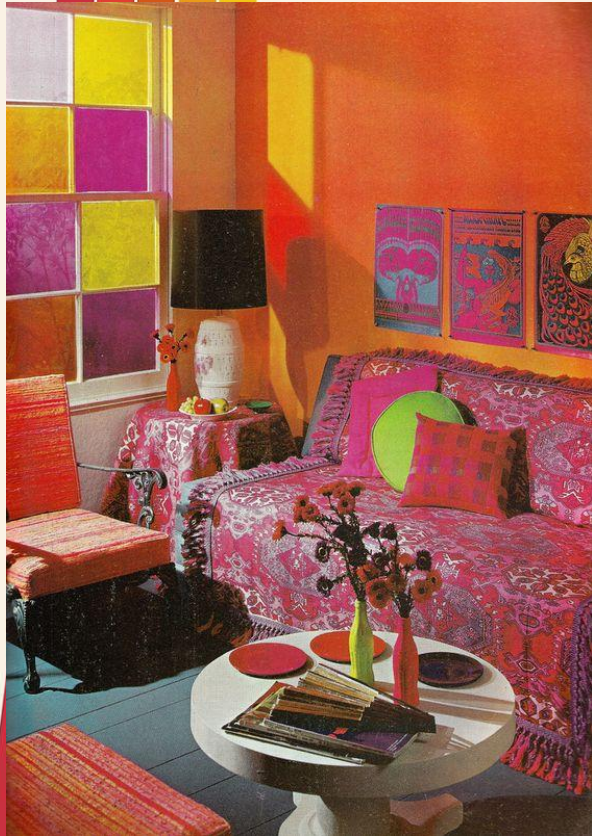
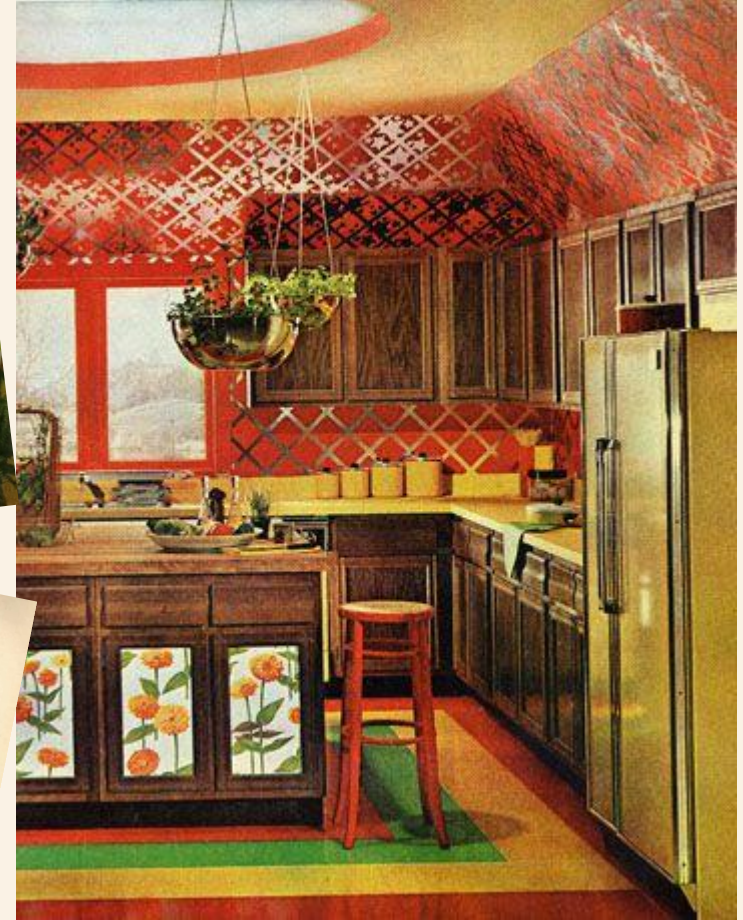
LAMP... with a familiar warmth... a new elegance

LAMP ABOVE: BLACK WHITE RED GREY

LAMP ABOVE: LAUREL LAMPE

Colonial style solid maple tables with hand-painted top or a white lacquer finish.

9 COLOR.. AND LOTS OF IT



10 EMBRACE THE FUTURE



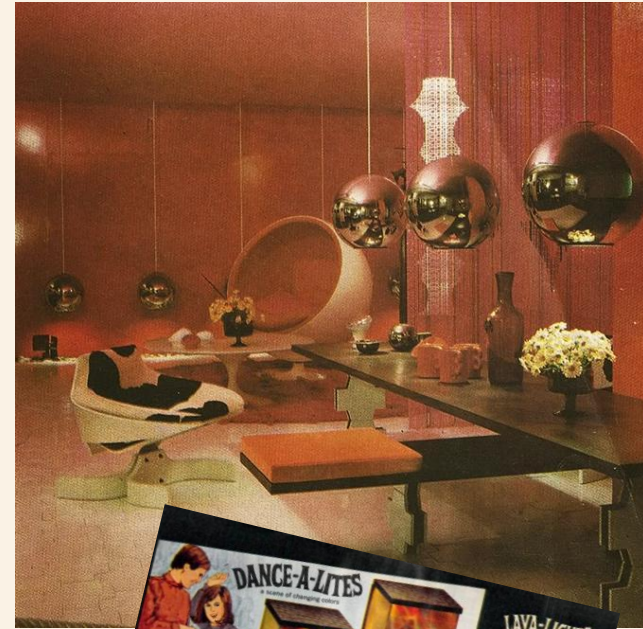
Contemporary design Dining Set Figure 301 **\$319.80**

Trumpetstar. Max-resistant wipe-clean table top of high-pressure plastic laminate in gleaming white. Measures 48.50 inches, extends to 72 inches with two 11-inch leaves. 20 1/4 inches high. Table and chairs have labeled tubular steel pedestal bases, white trimmed, polished tubular aluminum pedestal bases and white-finished tubular steel pedestal bases. Chairs swivel 360°. Urethane foam-padded seats and backs, covered in vibrant colors. Seats measure 15 1/2 x 16 inches deep, chairs measure 36 1/4 inches high overall.

Save \$25 on 7-piece Set. Includes table and six chairs. Shipping weight: 197 pounds. Set #249.85
 1" H 28084H—Separately total \$344.80 Set #319.80
 Table only: 1" H 2808H—Shipping weight 97 pounds \$104.95

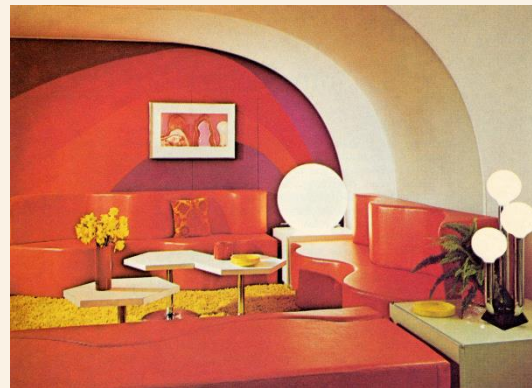
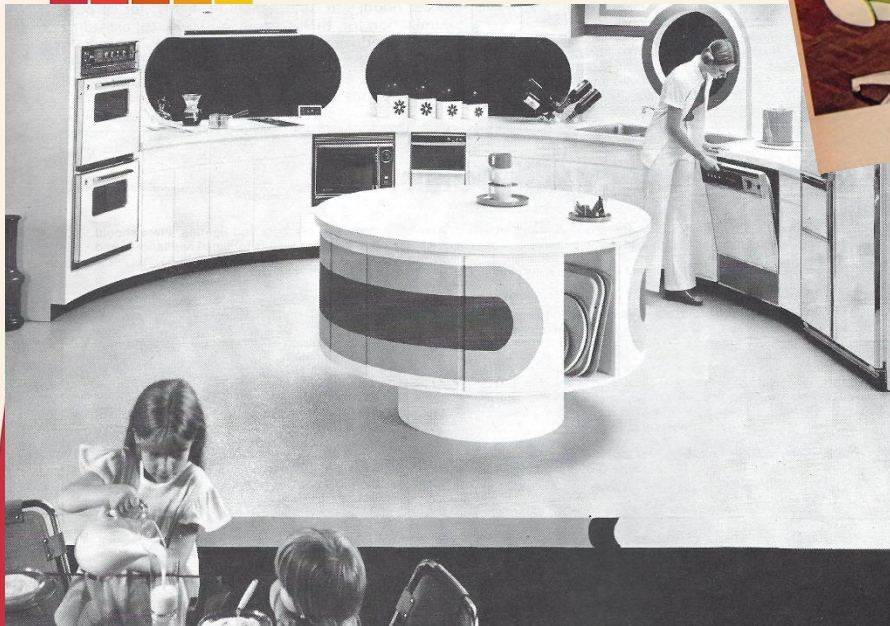
Save \$19 on 5-piece Set. Includes table and four chairs. Shipping weight: 137 pounds. Set #249.85
 1" H 28084H—Separately total \$269.75 Set #249.85
 Extra Chairs. Carton of two. State one color number: 1" H 2814AH—Ship. wt. 50 lbs. Carton \$79.99

DINING SETS FOR CASUAL OR FORMAL DINING



FORGET WHAT MAMA LIKED!

Things have changed. Mama couldn't have bought crisp new Tiffany. Crystal clear. Or subtle Marcouise. Smoky and sophisticated. They're brand new. Both on a Jewelle Chrome pedestal. With matching chairs that swivel. (Think of it. Getting up and down at the table gracefully.) Chromcraft has more new exciting designs in dining than you've ever seen. See them at your good furniture dealer. Or write us.



DANCE-A-LITES Figure 302 **\$29.99**

Attach to any amplifier and microphone. Lights dance to the sound.

LAVA-LIGHTS Figure 303 **\$49.99**

Just plug into wall. Lights dance to the sound.

GLOWING FILAMENTS Figure 304 **\$9.99**

OP LIGHTS Figure 305 **\$9.99**

CHROMCRAFT, INC.
 SENATORIA, MISSOURI 63108

Please send me your color folder on New Designs in Dining. 10¢ postage and handling is enclosed.

Name _____
 Address _____
 City _____ State _____ Zip _____

RESOURCE GUIDE FOR FURTHER RESEARCH

do.co.mo.mo_US_wewa

About Events MOD Blog Explore Advocacy Support

New Book Published!
PAUL HAYDEN KIRK AND THE RISE OF NORTHWEST MODERNISM

LEARN MORE

For Your Architecture Library
The first book published on the work of architect Paul H. Kirk is now available! This nicely illustrated book appeals to both longtime Kirk fans and those new to Northwest Modernism. Get yours today!

Upcoming Events
No upcoming events

SEE ALL

Recent MOD Blog Posts
Remembering Daniel Steigstrugg
WEWA Reboot

SEE ALL



NEWS & EVENTS ABOUT US

Enter your search terms

Home » Historic Preservation » Historic Buildings » Survey and Inventory » Nifty from the Last 50 Initiative

HISTORIC PRESERVATION

Buildings
Inventory
Medellan Homes
Surveys
Nifty From the Last 50 Initiative
Architectural Style Guide
Architect & Builder Biographies
Find a Historic Place
Experience History
Preservation Planning
Preservation Research

Nifty from the Last 50 Initiative

Launched at the 2003 State Historic Preservation Awards, the "Nifty from the Last 50 Initiative" is the state's first official effort to recognize and record Washington's post WWII or "Mid-Century Modern" resources. The project was a joint effort by the Department of Archaeology & Historic Preservation and DCCOHCMO. While the initiative was originally a focused two-year effort, DAHP is still accepting survey forms.

To date, over 350 mid-century modern properties have been recorded all over the state. They include such buildings as a group of playful, ecclesiastical structures designed by the Spokane architectural firm of Funk, Murray & Johnson in the 1960s.

The survey has also uncovered a group of buildings designed for Seattle's First National Bank. The collection of buildings are representative of an early version of corporate identity, using cutting edge, minimalist philosophies such as "Product-Place-and-Packaging." Seattle architect J. Lister Holmes designed the first model bank for Seattle First National. Other architects would then take this standard design and adjust it to the local conditions. And today versions of the bank can be found all over the state.

Over the last few years, several post WWII properties have been listed on the National Register. They include the 1930 Gamewy Lake Wilderness Lodge in Maple Valley, the Kenneth & Evada Brooks House in Spokane completed in 1956, the James Chewell House in Seattle, and the Curran House in University Place. The Brooks, Chewell and Curran House were the first post WWII properties to be listed on the National Register their respective cities. Other nominations of buildings from the recent past are in progress of being completed. To download a copy of these nominations use our on-line database WISAARD.

Still the number of Post WWII resources listed on the National Register is woefully under-represented when compared to other resources that have been listed on the register. Washington State has yet to list a post WWII subdivision, nor recognize the many groundbreaking modern dwellings in the Pacific Northwest which were featured in national magazines such as Sunset, Better Homes & Gardens, and Architectural Record.

Reports

- Casebook Magazine
- Study-2014
- Events

USMODERNIST ARCHITECTURE YOU LOVE

Search/Home Tours Activities USMODERNIST Radio More Info Donate

Architecture Magazine Library

We scan design magazines and make them freely available to the public, in text, searchable, printable, and downloadable pdfs. Do you have old architecture and design magazines in your attic, basement, office, storage unit, or library? We'll pay for shipping. **Here's what we are missing:** Small George Smart at george@usmodernist.org or call 919.740.8407. **Contact us** to report link errors - or **underwrite the Library!**



Welcome to the USModernist® Library, the world's largest open digital collection of major US 20th-century architecture magazines, with over 4 million downloadable pages - all free to access. Access to legacy publications has never been more critical for preservation and now architects, realtors, owners, sellers, and buyers have an easy way to research 20th-century architecture magazine coverage.

All across America, old architecture magazines are left rotting in attics, basements, libraries, and offices - if they haven't already been thrown away. In their day, these publications chronicled the best of Modernist architecture and the era's talented, progressive architects. Many of these mid-century Modernist architects and original Modernist clients have died. The rest are rapidly passing away, their houses largely forgotten and often needlessly destroyed.

Major donors include: Smithsonian Institution, Puii Rudolph Heritage Foundation, University of Hawaii, Maricopa, Atomic Ranch, Philip Kennedy Grant, Kirk Howe York, Kirk Virginia, Kirk North Carolina, Kirk Indiana, Kirk National, General College of Art and Design, Palm Springs Museum of Art.

Oranbrook, Baltimore Museum of Art, Minneapolis College of Art and Design, Ben Taylor, Christine Madril French, Robert Keil, Julie Taylor, Michael Pass, Bill Ruggieri, and the IT Oak PhD Program in Architecture.

Site Search

To find a specific Modernist house, put the architect name in quotes, plus the owner's last name, in "inward neutral" (away). To find a specific address, omit the street type (Rd, Dr, Way) and put in quotes, plus the city. "1502 Sharon" Charlotte. This search includes all magazines plus all content on usmodernist.org.

Down with breakfast-table dinners!
See how **the beautiful ones** can turn dinner...into dining.

Chromcraft
dinner will never be the same again!

Chromcraft items on these pages in color.

Playboy Club credit: Keyholders may purchase chromcraft items on these pages in color.

1970 Better Homes and Gardens
KITCHEN AND FAMILY ROOM IDEAS

HOW TO MAKE A KITCHEN WORK FOR FAMILY FUN!
ENTERTAINING OUTDOOR LIVING!
EATING SPACE YOU DIDN'T KNOW YOU HAD!
CREATE A VERY PERSONAL FAMILY ROOM!
COLOR: FRESH WAYS FOR A NEW KITCHEN!

cabins and VACATION HOUSES

of Sunset Books 1970

QUESTIONS?

MICHAEL HOUSER
STATE ARCHITECTURAL HISTORIAN

(360) 586-3076
Michael.houser@dahp.wa.gov



**SEND ME A NOTE, TEXT, LETTER, TWITTER,
SNAPCHAT, CALL, MESSAGE, ETC.....**

