

Attractive Sand Point Country Club Residence Blends With Site

By MARGERY R. PHILLIPS

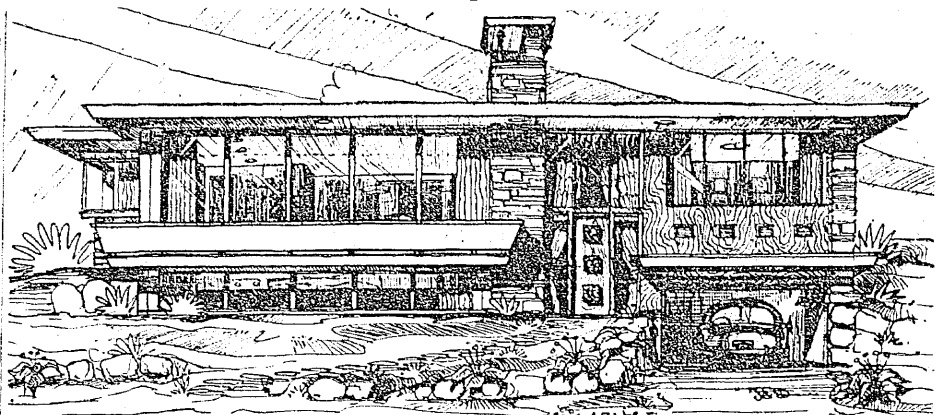
The new William Cosme home in Sand Point Country Club is a fine example of designing for the individual, for the site and for the locale. A clever handling of room arrangement, beautiful materials and fashionable details characterize this house.

Thomas C. Dunstan, architect, worked closely with the owners to create an atmosphere of comfort and beauty for their particular mode of living. Mr. and Mrs. Cosme, golf enthusiasts, wanted their home to overlook the green of the golf course and the panorama of lake and distant mountains. Thus, the house was set high, allowing a bank of windows to encompass the view. To avoid a fish-bowl effect a built-up rail surrounds the sundeck and screens the living room from view of the road.

The view site called for a split-level entry which has been beautifully detailed by architect and artist. The heavy slab door features three handsome mahogany panels hand-hewn by Dudley Carter.

The door opens into a tiled entry with steps leading up to the living level and down to the recreation area. The nine-inch square quarry tile is used on the steps and on the passageway which leads to the loggia. The entry is well lighted by panels of both clear and obscure glass. One wall is finished in the textured pattern of the Wilkeson stone that is carried in from the exterior to form a wire pier for fireplaces on both levels.

Three activity areas—the liv-



OPEN HOUSE: New ideas, new materials, individual details, and beautiful colors always are plentiful in a house designed by Thomas Dunstan, architect. The William Cosme Sand Point Country Club home, 8039 Lakemont Drive, is distinctively planned for its picturesque site and provides a fashionable setting for its owners. Martin Bisping, builder, Dudley Carter, sculptor, and Kubota landscaping artists invite you to visit this house, nearing completion, today from 1 to 5 p. m.

ing room, the dining room and the den—flow into each other to create a feeling of spaciousness and to enjoy the panorama of the countryside. Dividing the dining and living areas is a low planting box. Partitioning the den is a modern fold door. Colors to complement the outdoors and the stone fireplace wall, are soft shades of green and gray. The scheme in the den changes to create a more intimate feeling yet to blend harmoniously with the living rooms. Here, warm beige walls and a deep-brown ceiling have been chosen.

The kitchen is the step-saving Pullman-type—as pretty as it is efficient. Gold and burnt sienna are combined in tiling and woodwork to offset the fine graining of the natural-birch doors. In the handy pantry with its folding door—another detail which encourages economy in quantity buying and assures a well-stocked cupboard within easy reach.

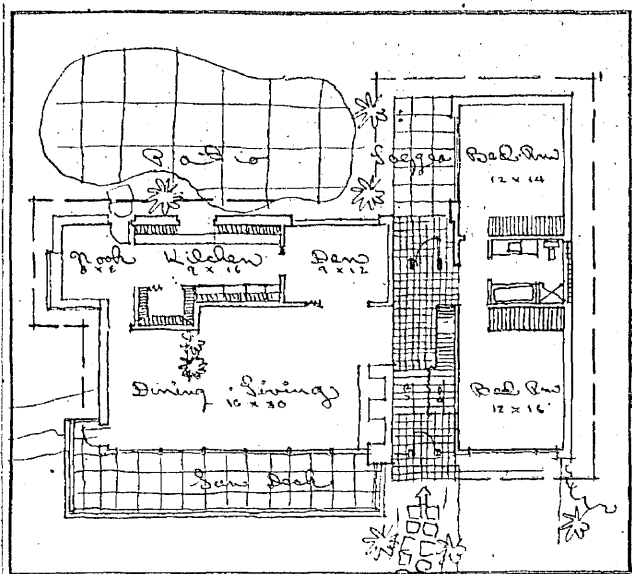
The breakfast corner, with its big corner window to the view repeats the gold-and-brown color scheme. The boxed-out window is tiled for plants. On the upper level, two bed-

rooms and bath are on the north side of the house. The master bedroom looks out upon the view. Here, walls are done in old rose with a pearl-gray ceiling. In the guest room, walls are soft yellow with a deep-gray ceiling. Each room has wide windows and a wall of wardrobes. The bath is tiled in green to complement the darker-green fixtures. The walls are ivory. Note the wall of structural glass to bring in shadowless light. The partitioning of fixtures is a desirable feature.

The open stairway leads to the recreation room below. There is a big fireplace with raised hearth and a built-in refreshment bar. Lots of space for games and dancing. High strip windows make this a daylight leisure room. Walls are gray, the ceiling and recess for the bar in burgundy.

The exterior is as individual as the interior. Wilkeson stone is used and the entrance and loggia have recesses paneled in cedar. Decks and trim are in forest green. Kubota landscape architects are responsible for the individual planting which adds so much to the entire setting.

Additional details include: The loggia adjoining the garden; the combination garage and carport; utility areas and door to garage conveniently placed at the foot



of the stairway; durable materials used throughout. Open-house hours today are from 1 to 5 p. m. at 8039 Lakemont Drive.

WANTED
Home in Carlton Park
Private Party willing to pay up to \$30,000 in cash.
REQUIREMENTS:
Sound view, Roman Brick, 5 or 6 on one with 2 sets of plumbing. Daylight designed basement with recreation room, bedroom and bathroom. Double garage.
Write 123-34 Times

The Flemish language resembles Dutch. Ethiopia is seeking foreign capital.

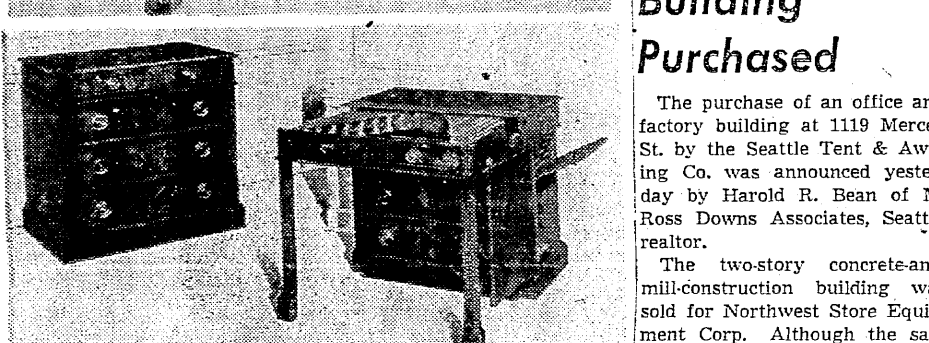
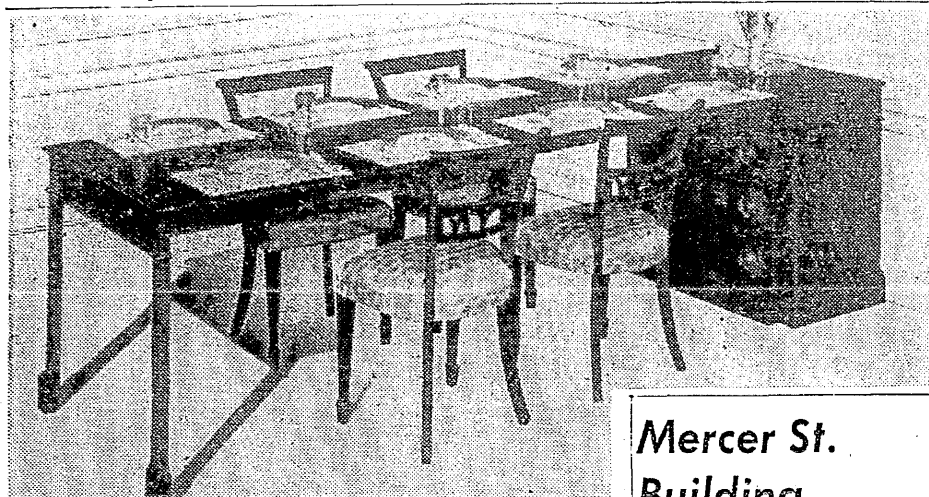
LET "PEERLESS" PROTECT YOUR CONCRETE!

RIGHT NOW—during the cool fall months, is the very BEST time to paint your concrete masonry and other concrete walls! And experienced painters will tell you that PEERLESS Portland Cement Paint will give you the BEST protection that money can buy! It's economical, easy to apply, comes in 12 attractive colors and white.

Call us for color card, prices, etc.!

Graystone PRODUCTS

134 Nickerson St. GA field 0066



VERSATILE: Combined living areas demand furniture with combined uses. An expandable commode is a versatile piece of furniture for the apartment or small home. This one piece of furniture becomes four different pieces: A handsome commode; a usable desk with one leaf extended; a dinette table with two leaves used; a dining table large enough to serve 12. Call the Dorothy Neighbors Department, Main 0300, for the name of the store featuring this modern space-saver.

Calles' Daughter Wed to Oil Man

NEW YORK, Oct. 21.—(AP)—Artemisa Calles, daughter of former President Plutarco Elias Calles of Mexico, and Rodolfo Ogarria, vice president of the Texas Oil Co., were married here today. The civil ceremony was performed privately by Judge Francis L. Valente of the New York General Sessions Court at Ogarria's home.

Simply amazing!

—What You Can Do With

OLD FURNITURE
Even your best friends won't believe you refinish in any of the modern blonde, white, natural or toned finishes. Bleach it easily and safely in your own home with

DALY'S BLEACH
we show you how
FREE DEMONSTRATIONS
TUESDAYS 10 a. m. to 9 p. m.
at
DALY'S
1115 No. 36th EV. 0421
"In The Fremont District"

Mercer St. Building Purchased

The purchase of an office and factory building at 1119 Mercer St. by the Seattle Tent & Awning Co. was announced yesterday by Harold R. Bean of M. Ross Downs Associates, Seattle realtor.

The two-story concrete-and-mill-construction building was sold for Northwest Store Equipment Corp. Although the sale price was not announced, the property has been held for \$90,000.

The tent and awning company will take occupancy of the building within the next 60 days, according to R. W. Bardell and Frank Barrie, officers of the firm. Extensive alterations are planned.

Financial arrangements were made by the McKenna Land Co. of Yakima, through Ralph Davis, supervisor of mortgages for the Seattle office of Equitable Life Assurance Society of America.

Rent Increases Here to Total Near \$500,000

Rent increases amounting to nearly \$500,000 a year have been granted landlords of Seattle and King County under recommendation of the Rent Advisory Board since a general 15 per cent increase was granted by the federal government September 28.

Figures for three weeks of operation were announced yesterday by R. C. Atwood, area rent director, showing that rent increases averaging \$5.32 a month, or 14.63 per cent additional, were granted for 7,728 units. The average rental before the increase was \$36.34 and now the average is \$41.66.

Most of the units involved had stayed at the same rent level since the start of rent control, and the group did not include any of the units where landlords entered into leases with tenants several years ago to take advantage of 15 per cent increase then, Atwood pointed out.

The new rentals will mean an additional monthly income to landlords of \$41,110, or \$493,330 a year.

Joseph A. Martineau, chairman of the Rent Advisory Board, said the program has accomplished its primary purposes, making rents sufficient to compensate landlords for increased operating costs, and closing the gap between older units and new ones which do not come under control.

Atwood said the program is not yet complete, since petitions for increases still are arriving at his office.

Mrs. Douglas Is Auxiliary President

Mrs. Charles Douglas was elected president of the Women's Division of the Seattle Home Builders' Association at the group's annual meeting last week.

Other officers include Mrs. Louis Pace, vice president; Mrs. Herbert Dahl, treasurer; Miss Irene Jones, secretary, and Mrs. S. G. Crate, Mrs. F. S. Johnson and Mrs. Bernhard Dahl, trustees.

Arrangements were completed for the organization's annual fall dinner party at the Washington Athletic Club Saturday night. It will feature "gingham-and-jeans" dress and a harvest theme.

Woolworth To Open Northgate Unit in November

The F. W. Woolworth Co. will open one of its largest stores in the West at Northgate in November.

R. C. Kirkwood, assistant division manager in San Francisco, said the new store will have 26,000 square feet with a window display of 288 feet. Glenn N. Keep is manager of the new store.

Tentative date for the opening is Thursday, November 9. Leasing of the property was arranged by M. Ross Downs & Associates.

Parking Meter Disappears

WELLSTON, Ohio, Oct. 21.—(UP)—The case of the vanished parking meter has police baffled. Not only did the entire meter and standard disappear, but the hole in the sidewalk was cemented.

SEPTONOL
A PROVEN REMEDY FOR SKIN TANKS

4 COMPLETE TREATMENTS ONLY \$1.49

CHOSEN BY PARENTS MAGAZINE AS 'FIRST IN THE NATION'

\$510 DOWN! \$57 A MONTH!

ONLY 10 left on these long-term loans. Your dream home can be a reality when you buy one of these beautiful 2-bedroom homes complete with basement for only \$10,200 to \$10,500. Because they were built before the new credit regulations were established they can still be purchased on the same old terms.

5% DOWN! Veterans 4% Interest

Parkwood HOMES

THE COMMUNITY BUILDER
ALBERT BALCH

Drive out Aurora to North 155th... right 3 blocks (Ashworth), north 3 blocks

16008 ASHWORTH EM. 6000

BAR-B-Q

GRILLS — GRATES — DOORS — HOODS
PORTABLE UNITS and
ELECTRIC SPITS
CLIEFCHAR BRIQUETS
BAR-B-Q TOOLS

ALSO BUILDING

SLATE! ARIZONA! **STONE** NEVADA!
"WITH ALL THE COLORS OF THE DESERT!"
MORE VENEER FOR HOMES MORE PATIOS — FIREPLACES MORE COLOR WALLS, STEPPING STONES BEAUTY

PATIO SUPPLY CO.
610 Taylor Ave. GA. 1220

Vuecrest

168 GIANT VIEW TRACTS SOLD

REMAINING KING-SIZE HOMESITES **38**

Our financial advisers suggest that real estate is a splendid hedge against inflation in uncertain times. You are sure to find a beautiful setting for your future home in VUECREST. Prices start at \$1,750 and you may pay as little as 25% down, balance payable monthly within a three-year period. R. E. ROGERS, Developer of VUECREST, is proud to recommend the firms who have helped to develop these fine homes... LAKESIDE GRAVEL CO. Minor 4242, ready-mixed concrete products, Mediterranean brick, etc. PITZER'S CARPET CO., 710 Pike St., SE. 1459... Pitzer's know floor coverings.

JOHN L. SCOTT, SALES AGENTS
BELLEVUE SQUARE, CA. 6500 (No Toll)

DRIVE OVER LAKE WASHINGTON BRIDGE, THEN TO BELLEVUE SHOPPING SQUARE... THEN 4 BLOCKS TO VUECREST

ENJOY YOUR FIREPLACE

- Get 2 to 4 Times the Heat
- Without smoke, soot or dirt
- Without cold, drafty floors
- Without fire hazard
- Without installing a damper

10-Day Money-Back Guarantee

THERMO-RITE
The Glass Door Firescreen

Pacific Coast Distributors, Inc.
1304 Stewart St.
Seattle 9, Wash. MA. 4688

"Title Service That Protects"

BACKED BY COMPLETE TITLE PLANT.

Every Washington Title policy is backed by our complete "title plant"—the very heart and foundation of a sound title policy. TITLE INSURANCE cannot be safely issued without this basis of priceless data.

Listen to **FRANK DRAKE DAVISON**, 8:30 FRIDAY NIGHT, STATION KOL, speaking on "The Books of 1850 and 1950"

WASHINGTON TITLE INSURANCE COMPANY
Capital \$1,350,000
Agents SEATTLE TITLE COMPANY
803 Second Avenue, Seattle 4 MAIn 1534
Charlton L. Hall, President
"Demand the Best—It Costs No More"

F. H. A. down payments NOT increased here!

Madrona Terrace
★ 28th S. W. and S. W. 109th ★

\$ 750 Down on 2-bdrm. homes
\$1,250 Down on 3-bdrm. homes

Monthly payments as low as \$48

\$7,750 Some View F. H. A. Terms \$8,750

Featuring **Youngstown Kitchens**

- ★ Level 60x128-ft. lots
- ★ Lifetime compo. roof
- ★ Olympic "Perfect Fit" Shake
- ★ Oil heat, tile bath
- ★ Storage space
- ★ Insulated

Johns & Lindskog
LO. 6464 Evenings, Call RA. 1235

THE SMART LOW-COST **Long-Bell KITCHEN** TO FIT YOUR NEEDS...

Here it is

- 30W30 \$18.00
- 2D24 \$23.35
- 4D15 \$19.75
- SF36 \$12.55

Check these Long-Bell Kitchen Features

New modern ideas from home economists' research have been built into Long-Bell Kitchens... two sliding shelves in the posture perfect base units... wall units with light, adjustable, easy-to-clean, removable shelves... a disappearing breadboard... a desk... a breakfast bar... Ease of installation in old or new construction, plus custom construction at quantity made prices, gives more comfortable kitchen living. The flexibility of the popular three inch modular design makes the Long-Bell Kitchen available as an entire kitchen, or as a unit at a time. EACH UNIT COMPLETE WITH HARDWARE

READY TO FINISH in NATURAL or any COLOR You DESIRE

Long-Bell
"Your Complete Building Material Store"

13661 RAINIER AVE. Renton 5-3124
1549 EASTLAKE Capitol 5540