

# ANATOMY OF A MAIN STREET BUILDING



developed by

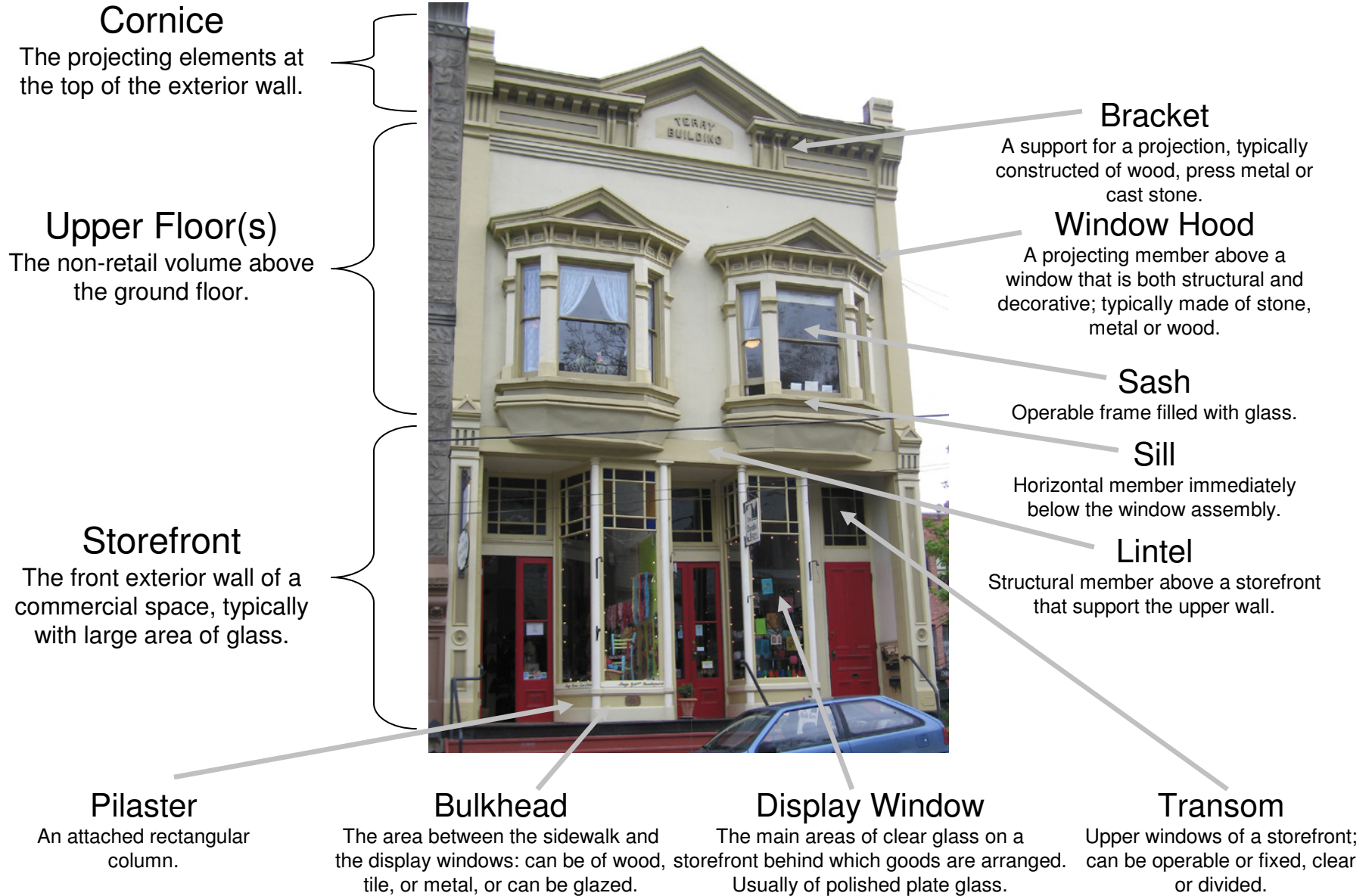
**Michael  
Houser**  
*State  
Architectural  
Historian*



May 2011

# ANATOMY OF A MAIN STREET BUILDING

Terry Building; Port Townsend





# ANATOMY OF A MAIN STREET BUILDING

Stoller Building; Camas



## Cornice

The projecting elements at the top of the exterior wall.

## Upper Floor(s)

The non-retail volume above the ground floor.

## Storefront

The front exterior wall of a commercial space, typically with large area of glass.

## Pilaster

An attached rectangular column.

## Window Pattern(s)

Rhythm or grouping of windows (ie A, B, B, pattern)

## Coping

Water resistant covering of the top of a wall.

## String Course

A projecting member that is both structural and decorative; typically made of stone, metal or wood.

## Sash

Operable frame filled with glass.

## Sill

Horizontal member immediately below the window assembly.

## Lintel

Structural member above a storefront that support the upper wall.



## Bulkhead

The area between the sidewalk and the display windows: can be of wood, tile, or metal, or can be glazed.

## Display Window

The main areas of clear glass on a storefront behind which goods are arranged. Usually of polished plate glass.

## Transom

Upper windows of a storefront; can be operable or fixed, clear or divided.

# ANATOMY OF A MAIN STREET BUILDING

Baker – Boyer National Bank Building; Walla Walla



**Cornice**  
The projecting elements at the top of the exterior wall.

**Upper Floor(s)**  
The non-retail volume above the ground floor.

**Storefront**  
The front exterior wall of a commercial space, typically with large area of glass.

**Pilaster(s)**  
An attached rectangular column.



**Bulkhead**  
The area between the sidewalk and the display windows: can be of wood, tile, or metal, or can be glazed.

**Display Window**  
The main areas of clear glass on a storefront behind which goods are arranged. Usually of polished plate glass.

**Modillions**  
A series of scroll-shaped brackets supporting the corona of a cornice.

**String Course**  
A projecting member that is both structural and decorative; typically made of stone, metal or wood.

**Bay(s)**  
Grouping of windows (example has four bays).

**Mullion**  
A vertical member separating windows, or panels set in a series.

**Capitol**  
Top portion of a column or pilaster crowing the shaft

**Transom**  
Upper windows of a storefront; can be operable or fixed, clear or divided.



# ANATOMY OF A MAIN STREET BUILDING

McGregor's Store; Hooper



## Cornice

The projecting elements at the top of the exterior wall.

## Storefront

The front exterior wall of a commercial space, typically with large area of glass.

## Parapet

A low, solid, protective wall at the edge of a roof.

## String Course

A projecting member above a window that is both structural and decorative; typically made of stone, metal or wood.

## Exterior Finish

Exterior surfacing material.

## Pilaster

An attached rectangular column.

## Recessed Entry

An entrance door which is set back from the main façade of the building.

## Bulkhead

The area between the sidewalk and the display windows: can be of wood, tile, or metal, or can be glazed.

## Display Window

The main areas of clear glass on a storefront behind which goods are arranged. Usually of polished plate glass.

## Transom

Upper windows of a storefront; can be operable or fixed, clear or divided.

# ANATOMY OF A MAIN STREET BUILDING

Bank of Starbuck; Starbuck



## Cornice

The projecting elements at the top of the exterior wall.

## Storefront

The front exterior wall of a commercial space, typically with large area of glass.

## Pilaster

An attached rectangular column.

## Bulkhead

The area between the sidewalk and the display windows: can be of wood, tile, or metal, or can be glazed.

## Display Window

The main areas of clear glass on a storefront behind which goods are arranged. Usually of polished plate glass.

## Bracket

A support for a projection, typically shaped link and inverted "L".

## String Course

A projecting member above a window that is both structural and decorative; typically made of stone, metal or wood.

## Sash

Operable frame filled with glass.

## Sill

Horizontal member immediately below the window assembly.

## Transom

Upper windows of a storefront; can be operable or fixed, clear or divided.



# ANATOMY OF A MAIN STREET BUILDING

Pay n' Takit Store; Spokane



## Cornice

The projecting elements at the top of the exterior wall.

## Storefront

The front exterior wall of a commercial space, typically with large area of glass.

## Parapet

A low, solid, protective wall used to obscure a low-pitched roof.

## Spandrel Panel

A section of wall, defined as an ornamental panel, typically between two vertical windows or arches.

## Awning

Fabric or rigid metal projection offering protection from the weather.

## Bulkhead

The area between the sidewalk and the display windows: can be of wood, tile, or metal, or can be glazed.

## Corner Entry

Double entry at chamfered corner of building.

## Display Window

The main areas of clear glass on a storefront behind which goods are arranged. Usually of polished plate glass.

## Transom

Upper windows of a storefront; can be operable or fixed, clear or divided.

# ANATOMY OF A MAIN STREET BUILDING

J.C. Penny Store; Puyallup



**Cornice**  
The projecting elements at the top of the exterior wall.

**Storefront**  
The front exterior wall of a commercial space, typically with large area of glass.

**Parapet**  
A low, solid, protective wall used to obscure a low-pitched roof.

**Awning**  
Structural member above a storefront that support the upper wall.

**Bulkhead**

The area between the sidewalk and the display windows: can be of wood, tile, or metal, or can be glazed.

**Display Window**

The main areas of clear glass on a storefront behind which goods are arranged. Usually of polished plate glass.

**Recessed Entry**

An attached rectangular column.

**Transom**

Upper windows of a storefront; can be operable or fixed, clear or divided.

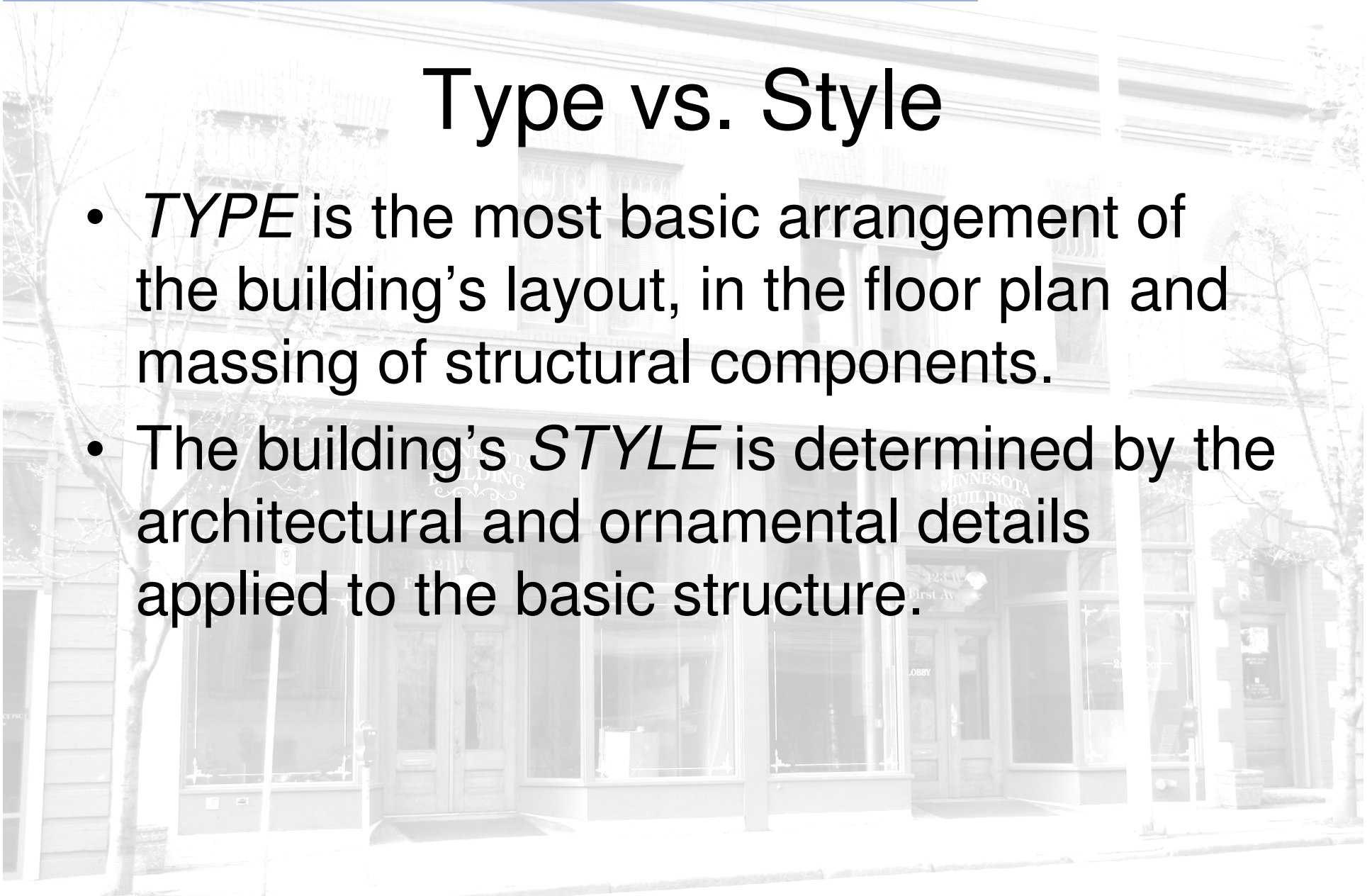




# ANATOMY OF A MAIN STREET BUILDING

## Type vs. Style

- *TYPE* is the most basic arrangement of the building's layout, in the floor plan and massing of structural components.
- The building's *STYLE* is determined by the architectural and ornamental details applied to the basic structure.



## ANATOMY OF A MAIN STREET BUILDING

# Commercial Building Types





# ANATOMY OF A MAIN STREET BUILDING

Washington State Examples

## Commercial – One-Part Block



Medical Lake



Hooper

Hamilton

Walla  
Walla



# ANATOMY OF A MAIN STREET BUILDING

Washington State Examples

## Commercial – One-Part Block



Seattle



Anacortes



Connell



Olympia



Bellingham



Shelton



# ANATOMY OF A MAIN STREET BUILDING

Washington State Examples

## Commercial – One-Part Block



Thorp



Grandview



Snohomish



Chelan



Norland

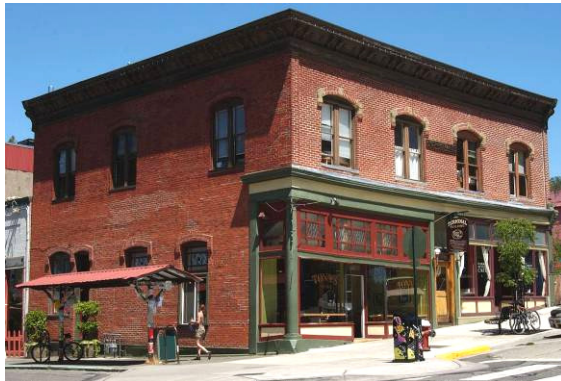
# ANATOMY OF A MAIN STREET BUILDING

Washington State Examples

## Commercial — Two Part Block



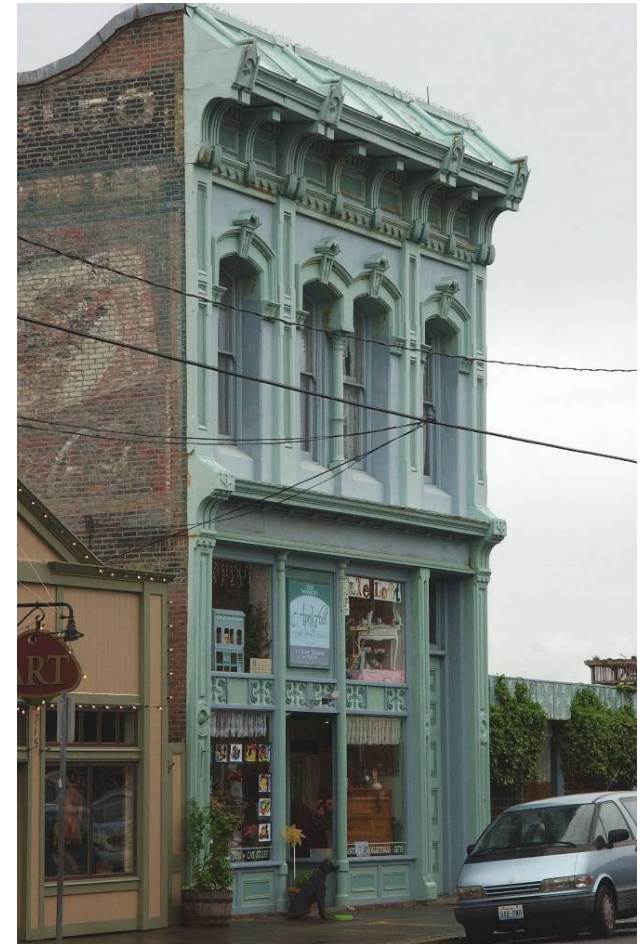
Colfax



Bellingham



Ellensburg



Port Townsend



# ANATOMY OF A MAIN STREET BUILDING

Washington State Examples

## Commercial — Two Part Block



Olympia



Vancouver



Shelton



Bremerton



Longview

# ANATOMY OF A MAIN STREET BUILDING

Washington State Examples

## Commercial – One-Part Vertical Block



Yakima



Centralia



Walla Walla



Tacoma



# ANATOMY OF A MAIN STREET BUILDING

Washington State Examples

## Commercial – One-Part Vertical Block



Kahlotus



Wenatchee



Federal Way



Yakima



Seattle

# ANATOMY OF A MAIN STREET BUILDING

Washington State Examples

## Commercial — Enframed Window Wall



Vancouver



Richland



Centralia



Olympia



Spokane



# ANATOMY OF A MAIN STREET BUILDING

## Commercial — Stacked Vertical Block



ERROR: stackunderflow  
OFFENDING COMMAND: ~

STACK: