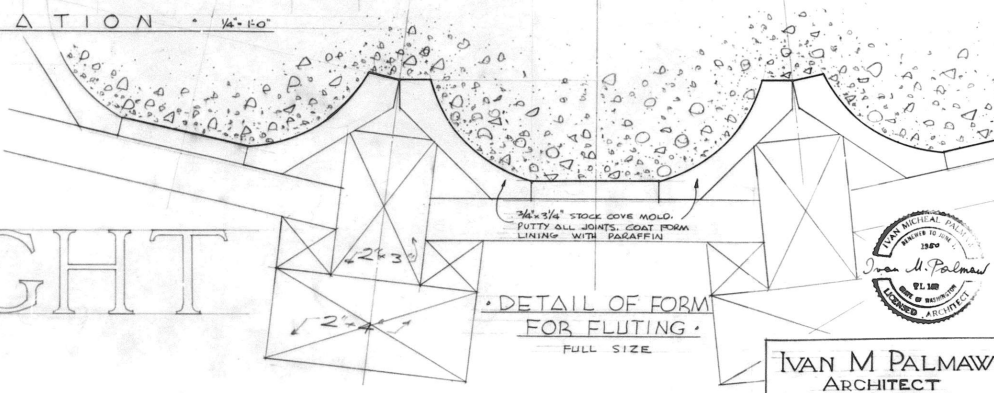
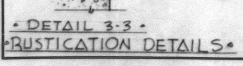
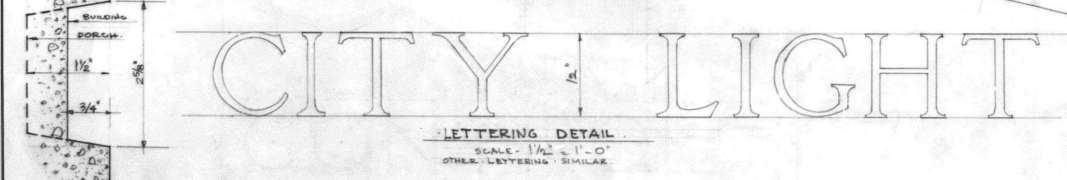
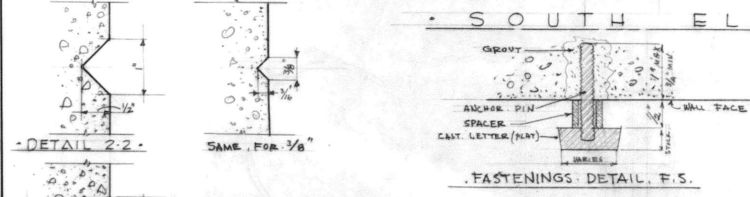
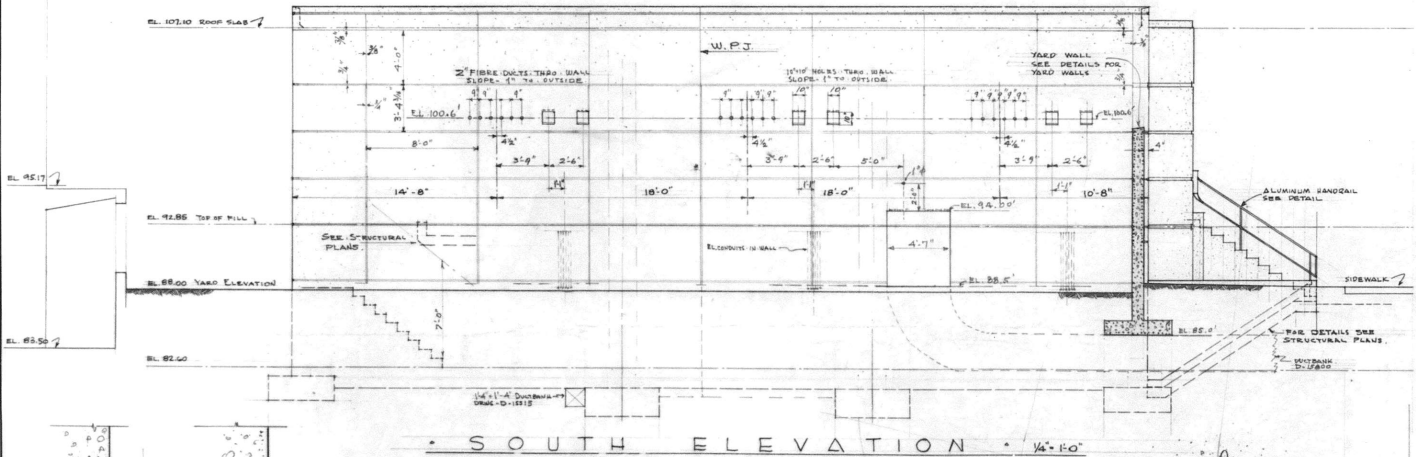
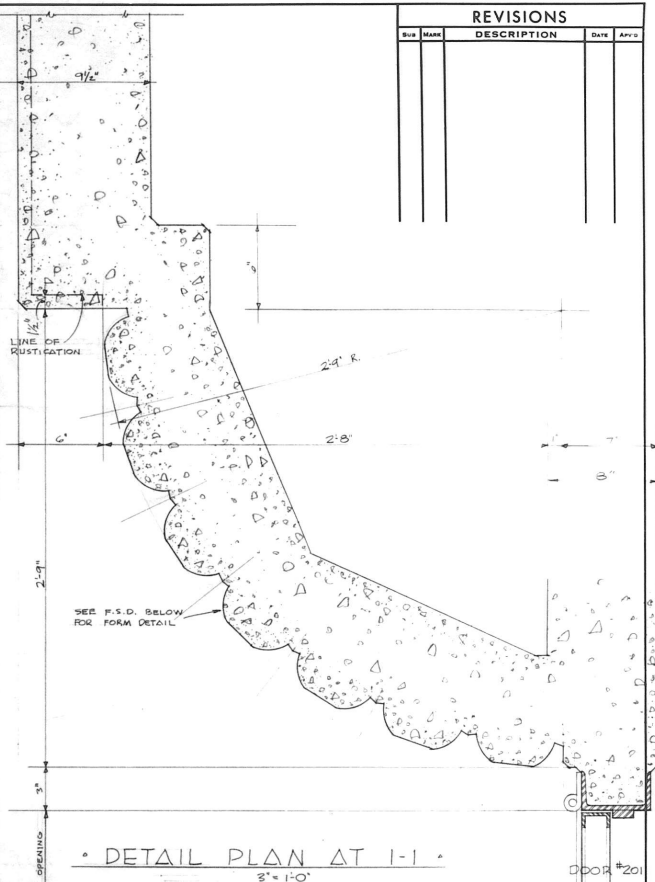
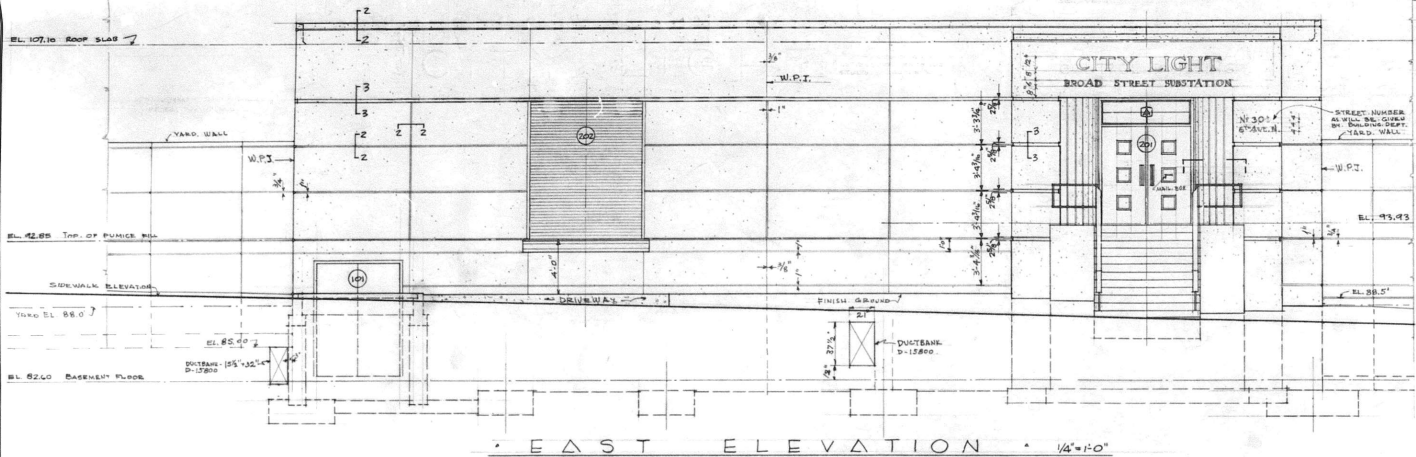


REVISIONS			
NO.	DATE	DESCRIPTION	BY



IVAN M PALMAW
 ARCHITECT
 306 2ND & CHERRY BLDG
 SEATTLE 4, WASH.
 TEL. EL. 4678 SCALE AS INDICATED

APPROVED BY THE BOARD OF PUBLIC WORKS
 SEATTLE, WASH. 8-31-49
W.C. Morse
 SUPERVISOR

CITY OF SEATTLE
 LIGHTING DEPARTMENT
 E. H. HOFFMAN, SUPERVISOR
BROAD STREET SUBSTATION
 ARCHITECTURAL
 CONTROL BUILDING
 ELEVATIONS

DWG. 48834 W. O. 20864-5 DATE 7-25-49
 DRW. BY B.C.G. SUBMITTED BY *W.C. Morse*
 TR. BY B.C.G. RECOMMENDED BY *W.C. Morse*
 CH. BY I.M.P. APPROVED BY *W.C. Morse*
 DWG. NO. D-15528