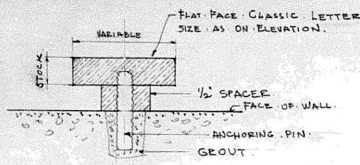
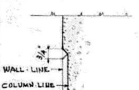


REVISIONS

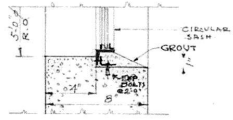
NO.	DATE	DESCRIPTION	BY	APP'D.
1	8/21/49	AS NOTED FROM REV. 2 TO REV. 1	J.M.P.	J.M.P.
2	8/21/49	AS NOTED FROM REV. 1 TO REV. 2	J.M.P.	J.M.P.
3	8/21/49	AS NOTED FROM REV. 2 TO REV. 3	J.M.P.	J.M.P.



7/8" S.D. OF LETTERS.

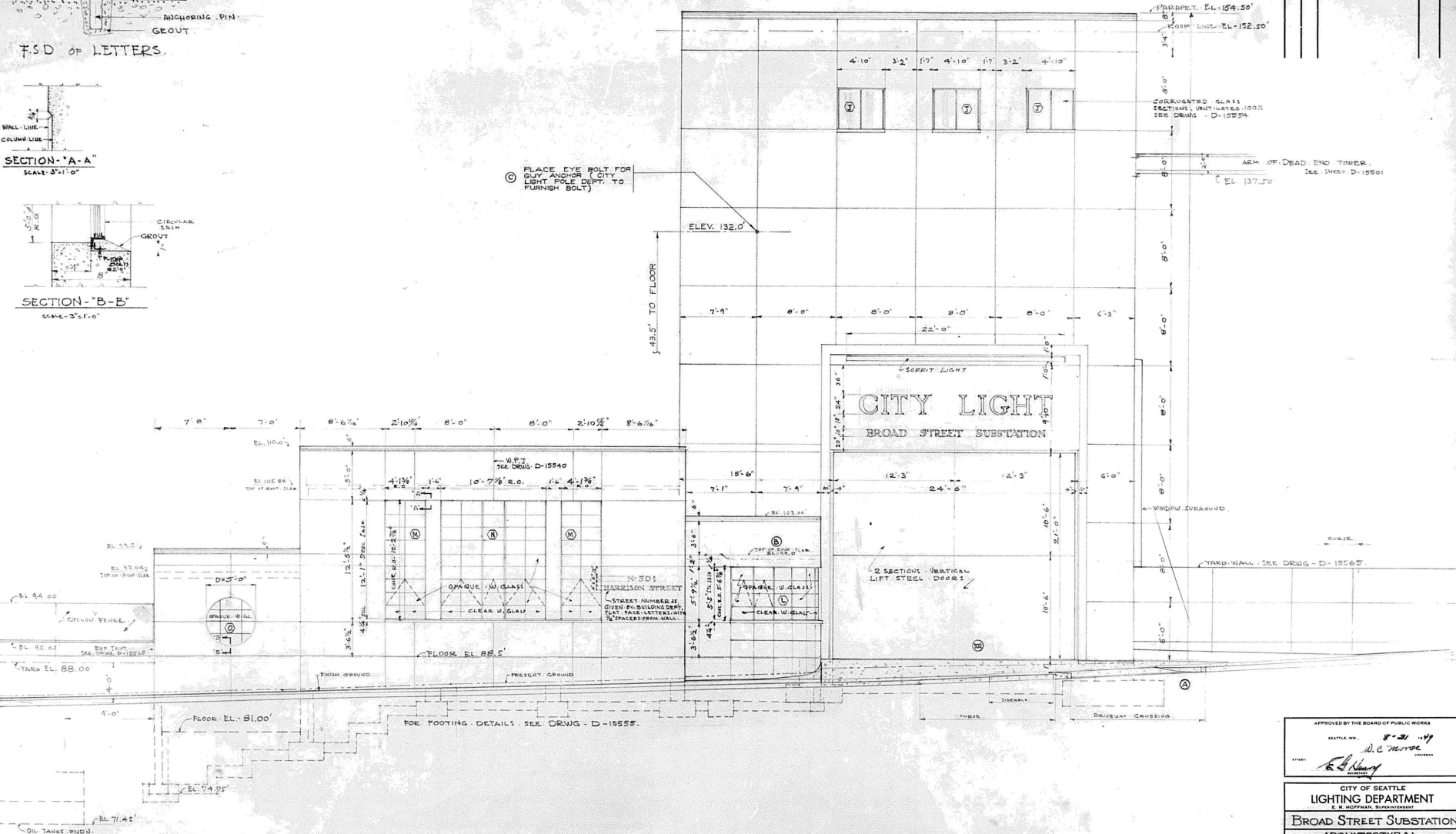


SECTION "A-A"
SCALE 3/4" = 1'-0"



SECTION "B-B"
SCALE 3/4" = 1'-0"

(C) PLACE EYE BOLT FOR GUY ANCHOR (CITY LIGHT POLE DEPT. TO FURNISH BOLT)



· NORTH · ELEVATION ·
SCALE 1/4" = 1'-0"

(B) NOTE: ALL WINDOWS TO BE CLEANED FROM LADDER & FROM INSIDE.

APPROVED BY THE BOARD OF PUBLIC WORKS
SEATTLE, WASH.
8-21-49
W.C. MORSE
CITY ENGINEER

CITY OF SEATTLE
LIGHTING DEPARTMENT
E. S. HOFFMAN SUBSTATION
BROAD STREET SUBSTATION
ARCHITECTURAL
CRANE BUILDING
NORTH
ELEVATION



IVAN M. PALMAW
ARCHITECT
306-2ND & CHERRY BLDG
SEATTLE-4, WASH.
TEL. EL. 4576

DATE	8-21-49	W. C. MORSE	DATE	7-22-49
DR. BY	J.M.P.	REVISIONS	J.M.P.	
CHK. BY	J.M.P.	APPROVED	J.M.P.	
SIX NO.	3	DRAWING NO.	D-15546	