

To print, select from the options below. First choose what to print: image only, image and citation, or citation only. Next choose a paper size and page layout, making sure your printer settings match. Then click your browser's [Print](#) function.

Paper: Seattle Daily Times, published as The Seattle Times; **Date:** 12-03-1967; **Page:** 110; **Location:** Seattle, Washington

SEATTLE DAILY TIMES, 501 WEST BROADWAY, SEATTLE, WASHINGTON 98104. PRINTED AT THE SEATTLE TIMES PRINTING PLANT, SEATTLE, WASHINGTON.

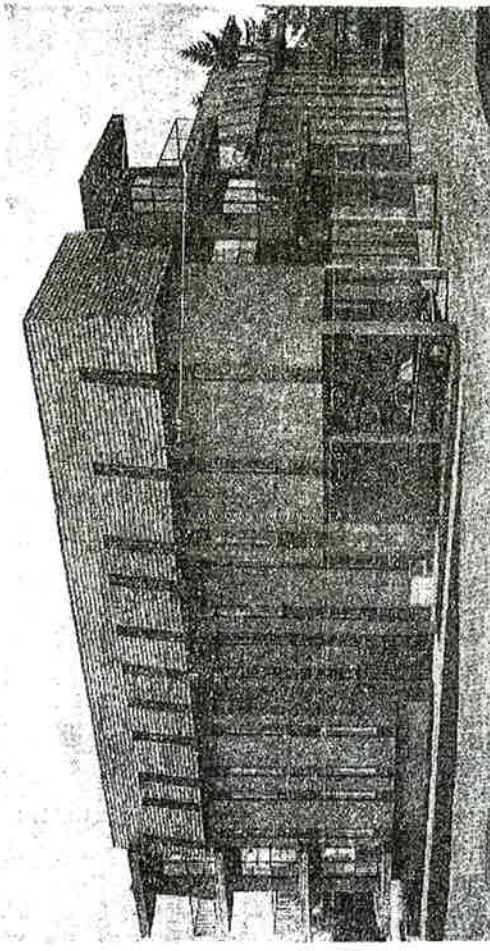
First of Four Buildings

29-Unit Greenwood Ave. Apartment to Be Open

A 29-unit apartment building, the first of four to be built in the 13200 Block of Greenwood Avenue North, has been completed and will be open for inspection today. The \$1,250,000 project, Brentwood Square, will supply a total of 208 units. The second building, about 70 per cent completed, will contain 69 units. The project is built and owned by James D. Burns.

Designed by Douglas W. Vockay, the three-story frame structure has been finished in marbled concrete and cedar. The French mansard roof is styled in the manner of the 16th Century.

THE APARTMENTS have ceiling-high wardrobes with some mirrored doors and double shelving. Entry halls, serving bars, a full complement of kitchen appliances, plush-cut pile carpets and draperies are provided. Anodized aluminum encases the windows, and the inside sills are ceramic tile. Double oak doors with amber-glass insets mark the entranceway.



The one- and two-bedroom apartments will rent for \$183 to \$205 a month. A model apartment has been furnished by Laurelhurst Interiors. The first-floor apartments have been elevated a half floor so that automobile lights will not shine on the windows.

THE LOBBY is paneled in oak. Stairs and corridors are carpeted. A central laundry and large, individual storage lockers are provided. Sound control is provided in the double insulation and the spaced floor and ceiling systems. The development is being developed by Burns.

tween two freeways; interchanges at North 13th and North 145th Streets. It is on a bus line and is 10 blocks from the Seattle Golf & Country Club. It is near shopping and churches. Landscaping will be by Edward M. Watanabe, landscape architect.

BRENTWOOD Square will be added to the chain of apartment houses owned and managed by Burns and his wife, Betty Anne. Burns has built 480 units in 18 buildings, many of which still are owned by him. He is a member of the Seattle Master Builders' Association.

BURNS SQUARE APARTMENTS