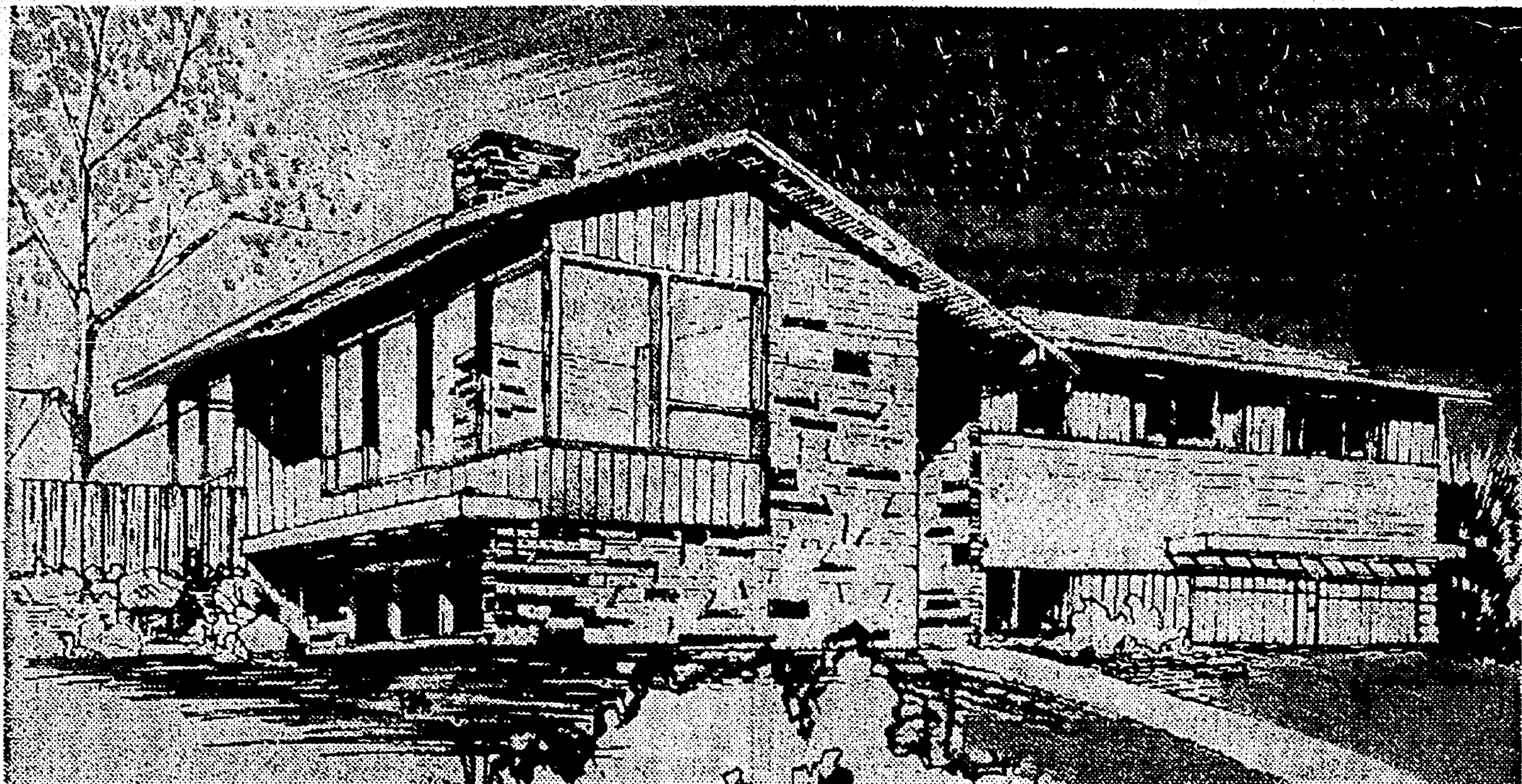


# Spaciousness, Materials Featured in View Home on Queen Anne



**OPEN HOUSE:** In the heart of the city a four-bedroom home with indoor-outdoor arrangement for living areas has been planned by Blaine McCool, architect, and constructed by Metropolitan Builders under the supervision of William Blankenship. Open-house hours today from 11 a. m. to 7

p. m. will afford an opportunity to visit this large home of 1,810 square feet. Particular attention is called to the manufactured sandstone used on the exterior and interior. The house is situated on Queen Anne Hill at the corner of First Avenue West and West Prospect.

## 1,810 Sq. Feet In 2-Level House

By MARGERY R. PHILLIPS

A house for the city, planned by Blaine McCool, architect, and constructed by Metropolitan Builders will be open today from 11 a. m. to 7 p. m. The house is situated on Queen Anne Hill on the corner of First Avenue West and West Prospect.

A new building material has been used on the exterior and combined with cedar paneling. A manufactured sandstone in soft shades of beige and brown creates a distinctive and lasting

exterior finish. The stone, available in 3, 6 and 9-inch heights, is 24 inches long and emphasizes a horizontal, textured finish. During the open house representatives will answer questions regarding this new stone.

On this corner view property a plan of 1,810 square feet provides very comfortable living for a large family. The half-level entrance opens both upper living area and lower recreation level to the various activities of a growing family.

### Attractive Entrance

The entrance door—midway between the two living levels—is very inviting with beautiful paneled walls of mahogany, clear and structural-glass panels, and durable slate floor. The open stairway is well lighted by a smart hanging lantern.

The living room has a large corner window facing Puget Sound. The same sandstone that is used on the exterior forms the fireplace wall that separates living room from dining room. The gray-green of the walls is a neutral background for the warm tones of the stone.

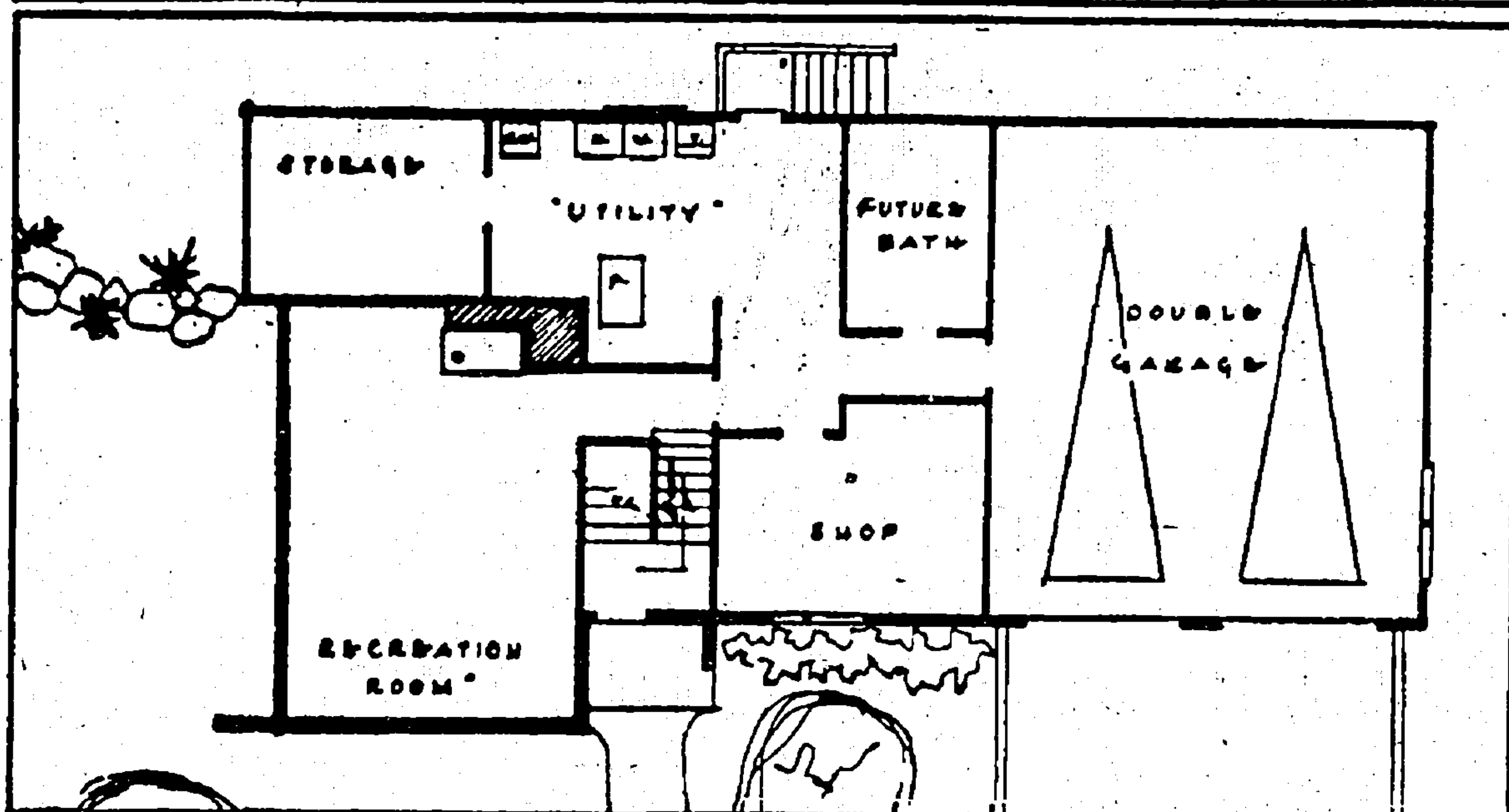
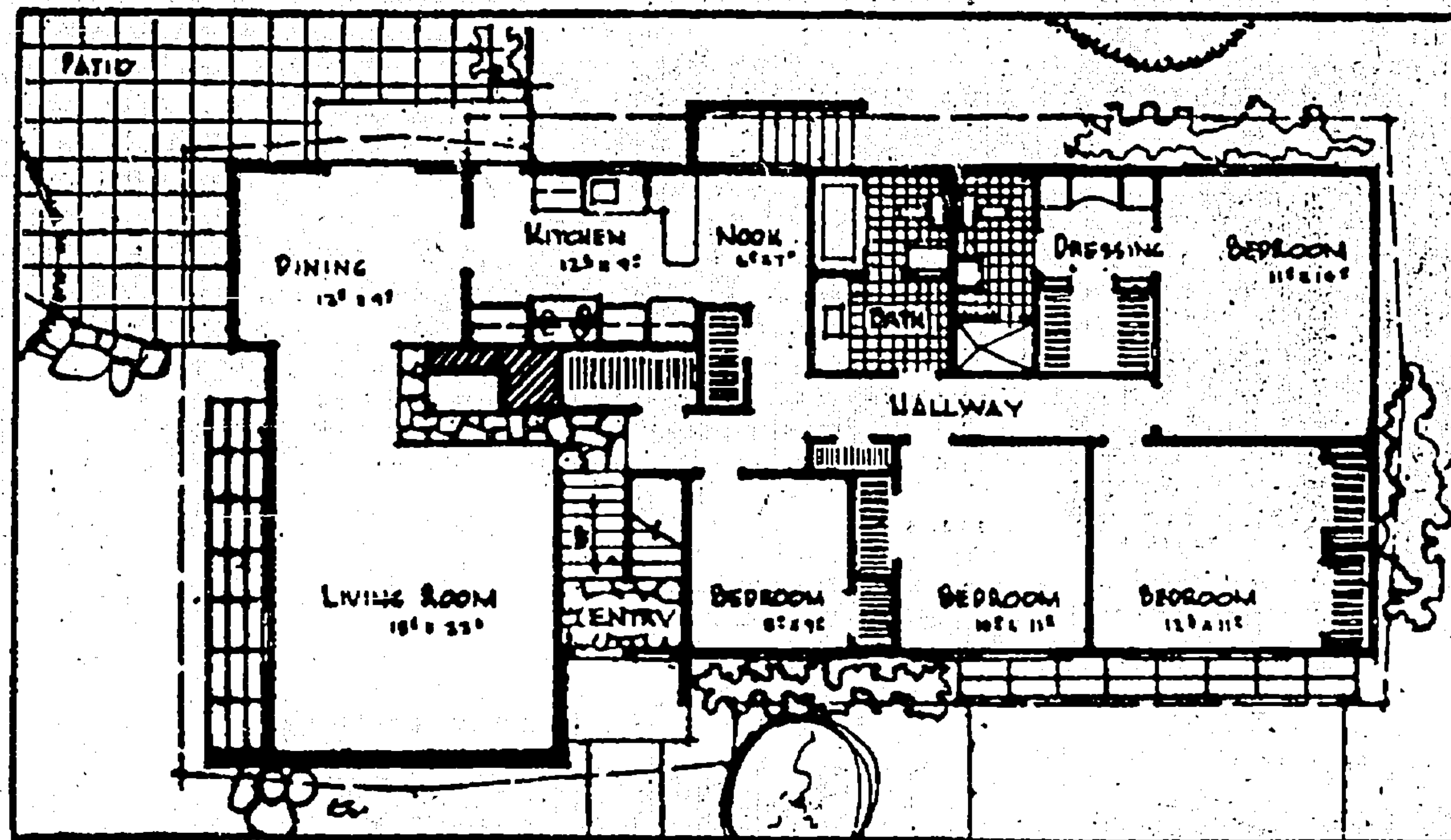
The dining room is guest size and opens onto a patio shaded by a beautiful maple tree and screened from the street by a cedar fence. This arrangement provides pleasant indoor-outdoor living for city property. Note the way the concrete is squared with insets for planting.

### Rooms Are Inviting

The kitchen and breakfast room are so pleasant and inviting for a large family. The

birch cabinets are finished in a deep, mellow tone with natural-wood knobs. Walls are soft green and the spatter linoleum is in shades of beige, green and brown. Counters are tiled in oatmeal with a deep-brown border. The wall behind the range has a decorative tiled pattern and a colorful copper hood. Opposite this work-space the sink and dishwasher are placed below a decorative window. An island counter separates the food center from the breakfast space. Note that one side of the counter is open so that it can be used for an eating bar as well as serving counter. Adjoining the breakfast room is a large closet for staples.

There are four bedrooms and two ceramic-tiled baths on this upper level. The room nearest



the entrance hall could be used as study or guest room. The bath across the hallway is compartmented to serve both family and guests. The first unit may be used as a powder room in that it has a very pretty built-in dressing counter tiled in green with a three-way mirror on the wall. The second area, partitioned by structural glass and a sliding door, has a built-in shower tub and a water closet. The heater and circulator in the ceiling give extra warmth for bathing and dressing.

### Bedrooms Are Roomy

There are two well-proportioned bedrooms—one in gray and one in pink. Each has a full window wall and a large wardrobe.

The master bedroom is large with a wall of glass facing west and looking into a small garden area. Walls are pink and gray.

This same color scheme carries into the convenient dressing room where individual ward-

robes and accessory cabinets and a most attractive tiled dressing counter are arranged. From the dressing room we step into the half-bath with stall shower and water closet. This master suite is on the quiet side of the house and can be furnished as a bedroom-sitting room in that the facilities for dressing and bathing are placed in adjoining rooms.

The full lower level allows a large mahogany-paneled recreation room ideally planned for radio, television and the more vigorous activities leaving the upper living room for quiet conversation.

There are also rooms for laundry and the heating system, a well-lighted shop, storage, future bedroom and bath and an entrance to the two-car garage, complete with electric push button attachment in the car to operate doors.

There is an airiness and a spaciousness in the well-proportioned rooms and a feeling of

stability and quality in the use of fine materials throughout.

## Three Business Architectural Awards Given Firms and Students Change Hands

Sale of three business properties for a total of more than \$100,000 was announced yesterday by Fred J. O'Brien, vice president of Henry Broderick, Inc.

A two-story store and apartment building at 2311-15 24th Av. N. was purchased by H. W. Ajax from Joseph Luban. The property had been held for \$42-

## 100 Homes In Renton Tract

The Washington State Chapter, American Institute of Architects, last week presented its annual awards to professional and student architects. The winners:

Residential—The firm of Bassetti & Morse and its clients, Mr. and Mrs. Gerald Martin, for the Martin residence, 6544 49th Av. N. E.; Bassetti & Morse and Mr. and Mrs. John O'Brien for the O'Brien residence, 5041 Lake Washington Blvd. S.; Paul

torf, Edmonton, Alta.; Alpha Rho Chi medal, for ability, attitudes, leadership and service, to Gordon B. Varey, Everett.

A \$500 alumni traveling scholarship to Gerhard Olving, displaced person from Estonia; three faculty awards for excellence to Barden G. Erickson, Seattle; Barry V. Downs, Vancouver, B. C., and Gerald C. Pomeroy, Seattle, and the Washington State Chapter scholarship award of \$150, for an outstand-

## See the Best of California in Margery I feature home of 1st West and West Prospect

One hundred new homes in President Park, Renton, will be completed this week, Albert Balch, builder, announced yesterday.

More than 300 families now are living in the President Park development, Balch said.

The homes are connected to water mains and sewers and are on paved streets.

The houses, Balch said, feature flexibility in planning and a wide choice in color schemes.

## See the Best of California in Margery I feature home of 1st West and West Prospect

LAYRITE CONCRETE

7265 East Marginal Way

\* Now again you may