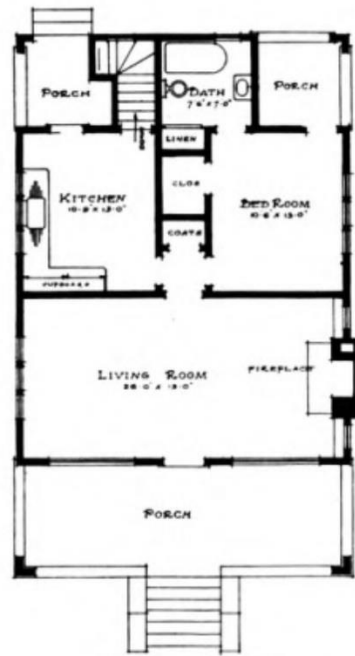


—Keith & Whitehouse, Architects.

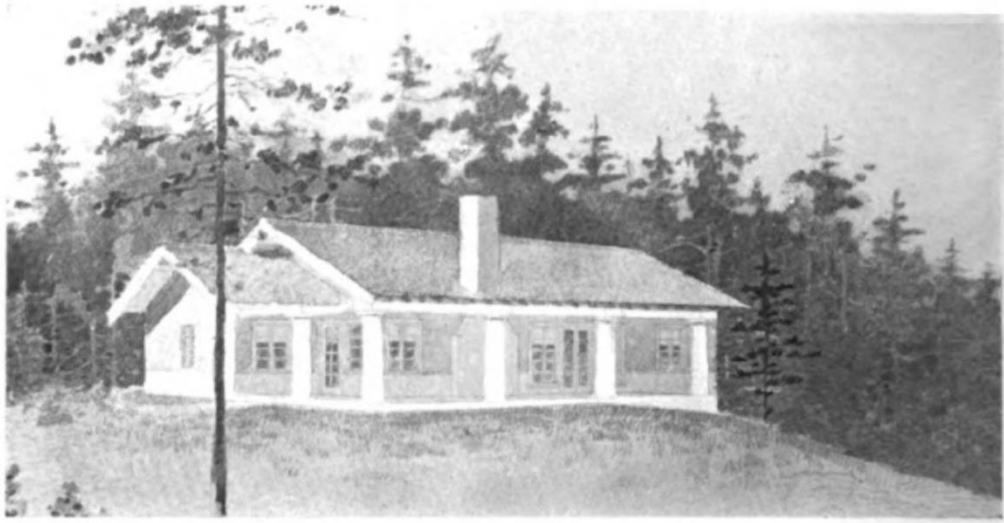
An Ideal Little Home for Two

DESIGN B 333



• FIRST FLOOR PLAN •

*Keith & Whitehouse
Arch. 1912*



—Keith & Whitehouse, Architects.

Bungalow House in the Western Forests

DESIGN B 338



• FIRST FLOOR PLAN •

*Keith Whitehouse
& Whitehouse*

Digitized by Google

Original from
UNIVERSITY OF ILLINOIS AT
URBANA-CHAMPAIGN



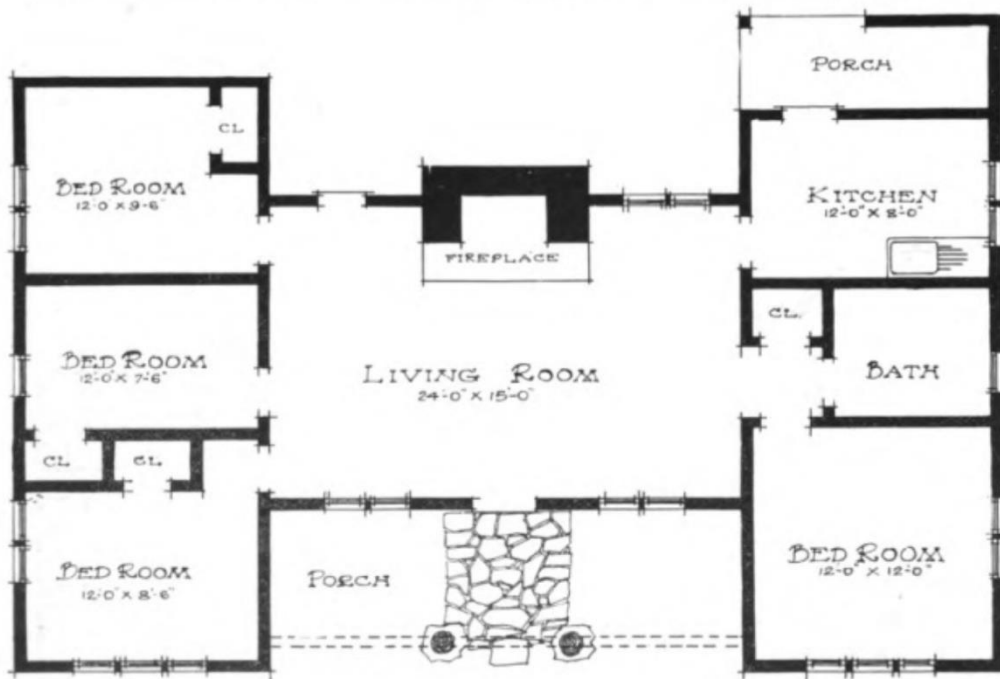
—Keith & Whitehouse, Architects.

DESIGN B 345

A Western Summer Camp

kitchen fixtures are especially desirable for service. Ice box is located in the entry from which the basement stairs descend

with a maid's room adjacent, containing clothes closet. The partial basement is 7 feet high and contains a small



• FIRST FLOOR PLAN •

*Keith & Whitehouse
Architects*



DESIGN B 355

—Keith & Whitehouse, Architects.

A Substantial Summer Cottage

plaster which can be left in the natural gray of the cement or painted either an ivory white or straw color. The second story walls are barn boards, battened. The roof is shingled, which can be stained a moss green or a rich brown.

The second story to be painted to match first story. A recess is provided in diningroom for buffet with artistic case-ment windows over. The livingroom and side veranda are connected by French doors. This veranda can be en-

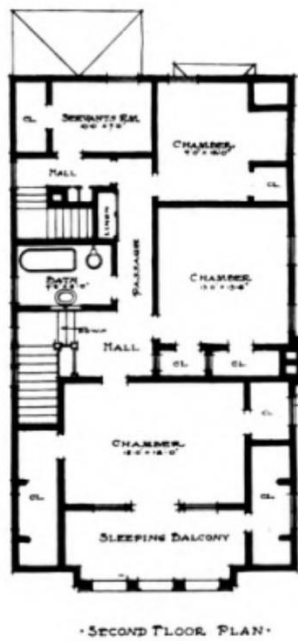
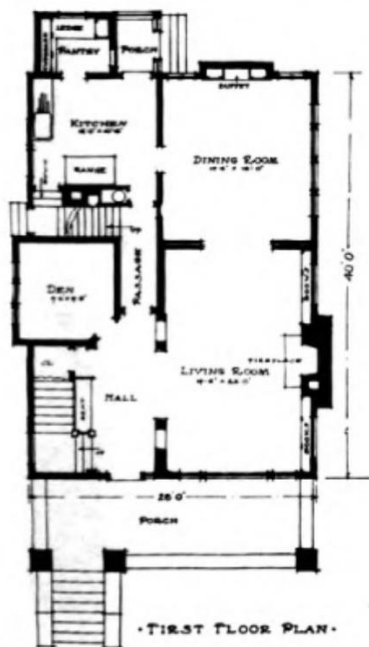




DESIGN B 400

Keith & Whitehouse, Architects.

A Very Artistic Modern Home





Keith & Whitehouse, Architects

A Picturesque North-Western Home

DESIGN B 216



Digitized by Google

Original from
UNIVERSITY OF ILLINOIS AT
URBANA-CHAMPAIGN



DESIGN NUMBER 17.—For Description see Page 89.

