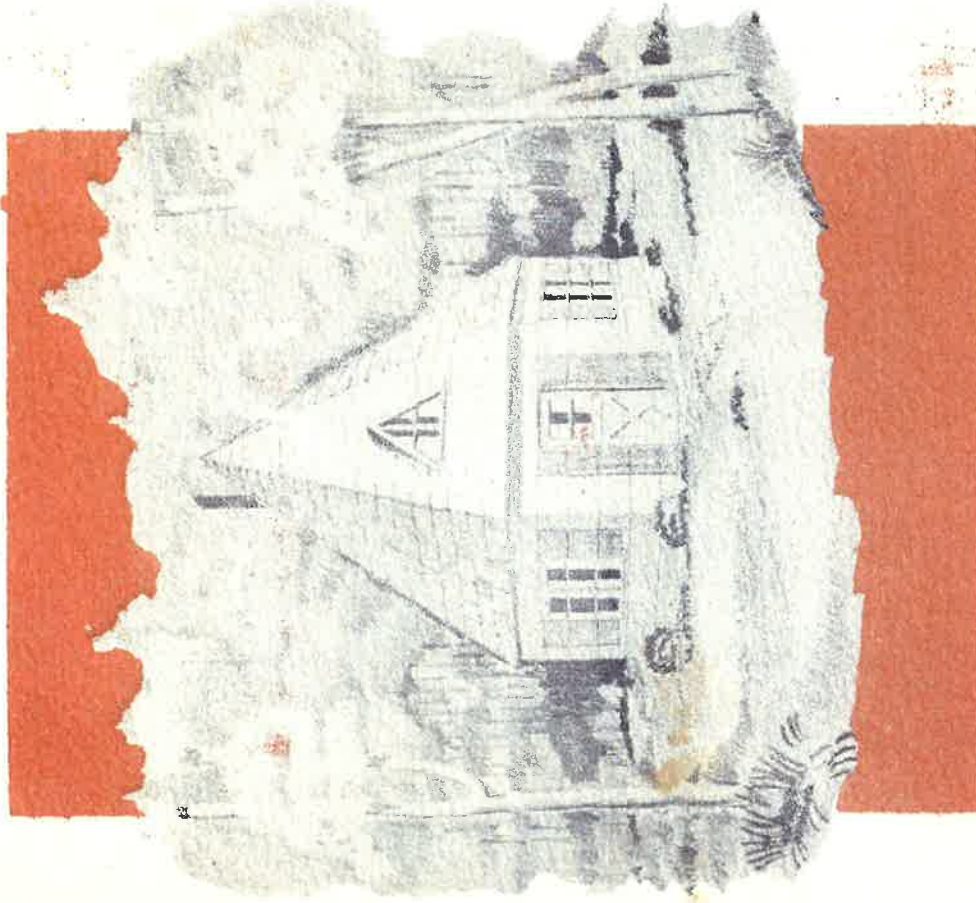


# Plan-it Series

SUMMER COTTAGE • NUMBER FOURTEEN



HARBOR PLYWOOD CORPORATION

(Continued from Inside Cover Page)

By using nailing strips under the shingles, and a heavier rafter, a beamed ceiling may be used in the living room, as the roof sheathing forms a solid ceiling between the rafters.

Greater strength is made possible by nailing and gluing the plywood on both sides to the second floor joists. This forms a stressed covering on the joists that actually takes part of the load, and makes possible a reduction in joist size than would otherwise be required.

A choice of woods for interior wall paneling is available in redwood, Philippine Mahogany (Lauan) and fir. Each has numerous individual decorative characteristics.

Many useful and interesting built-in cabinets may be incorporated in the living and bunk rooms. The kitchen cabinets are built of SUPER-Harbord panels with flush  $\frac{3}{4}$ " SUPER-Harbord doors. For economy, doors have been omitted from linen and clothes closets and are used only on room openings.

The following list of materials has been included only as a guide for preliminary estimating:

## MATERIAL LIST

### Foundation

- 20 Pcs. 18" x 18" x 8" Concrete Blocks
- 8 Pcs. 6" x 8" x 14' Sills
- 6 Pcs. 2" x 10" x 10'
- 4 Pcs. 2" x 10" x 14'

### Closure

- 70 Pcs. 2" x 8" x 10' Joist
- 46 Pcs. 2" x 6" x 14' Joist
- 23 Pcs. 2" x 6" x 18' Rafters
- 23 Pcs. 2" x 6" x 8' Rafters
- 51 Pcs. 2" x 4" x 10' Studs
- 140 Pcs. 2" x 4" x 8' Studs
- 97 Pcs. 2" x 4" x 7' Studs
- 800 Lin. Feet 2" x 4" Plates
- 8 Pcs. 2" x 8" x 10' Headers
- 10 Pcs. 2" x 6" x 8" Headers
- 6 Pcs. 2" x 6" x 10' Headers

### SUPER-Harbord

- 36 Pcs.  $\frac{3}{8}$ " x 48" x 96" SUPER-Harbord SoLS Flooring
- 32 Pcs.  $\frac{1}{4}$ " x 48" x 96" SUPER-Harbord SoLS Ceiling
- 43 Pcs.  $\frac{1}{4}$ " x 48" x 96" SUPER-Harbord SoLS Walls
- 44 Pcs.  $\frac{1}{4}$ " x 48" x 84" SUPER-Harbord SoLS Walls
- 13 Sqs.  $\frac{3}{4}$ " x 18" x 96" HARBORSIDE (Fir or Redwood)
- 9 Sqs. 18" PERFECTION Shingles
- 28 Pcs. 16" x 48" x 96" HARBORD—Sheathing Grade Roof

### Miscellaneous

- Brick—Chimney
- Millwork—Doors, Windows, Cabinets, Trim, etc.
- Wiring
- Plumbing
- Paint
- Glue—LauX 444

HARBOR PLYWOOD CORPORATION  
HOQUIAM, WASHINGTON

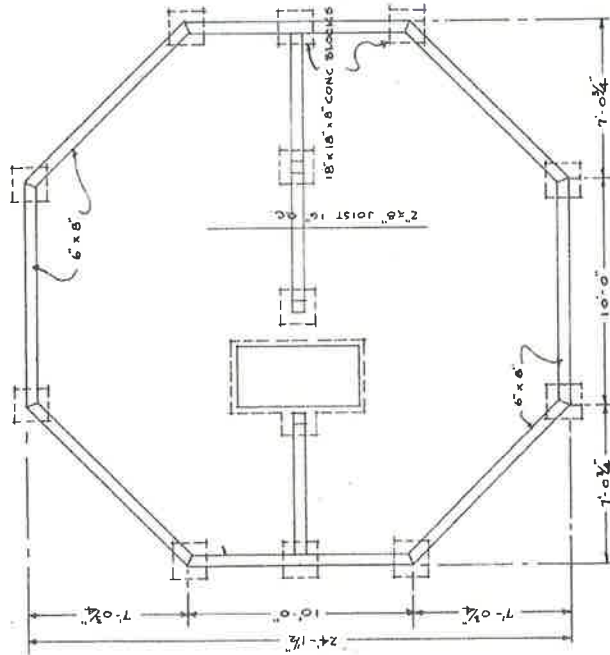
**P**LAN IT summer cottage No. 14 is particularly suitable for sections having heavy snow. The steep roof and waterproof qualities of SUPER-Harbord make it adaptable to severe weather conditions.

Built-in bunks are space-saving and permit flexible sleeping accommodations. By providing a ladder into the attic, even more sleeping space may be provided than is diagrammed.

The kitchen serves the living room with a built-in dining bar. This bar is formed by an extension of the kitchen work-deck. Access is made to the kitchen by a hinged section of the bar. The compact bath room and near-by kitchen are so arranged that a minimum of plumbing is necessary for their service.

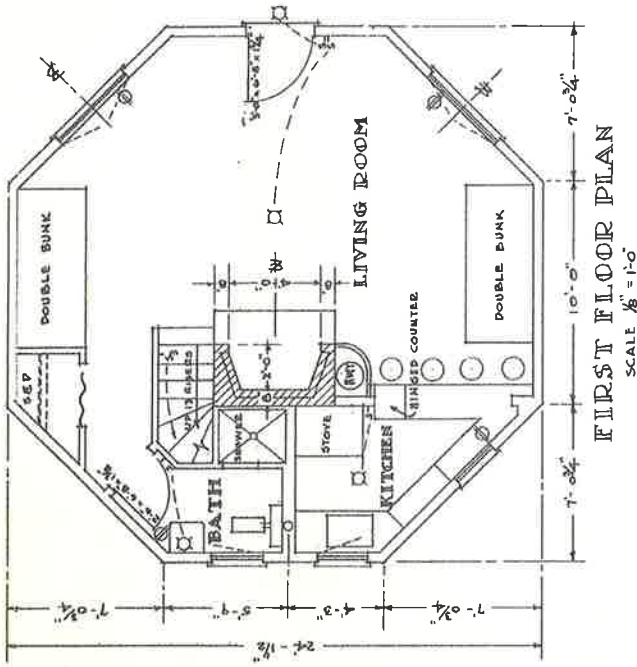
Closets are provided with draw curtains. The swing-in windows permit the use of operating shutters. Shutters are 1/2" SUPER-Harbord which, when closed, give ample protection. Second floor windows are so located that entry may be made through them when drifts of snow block the first floor entrance.

(Continued on Back Page)

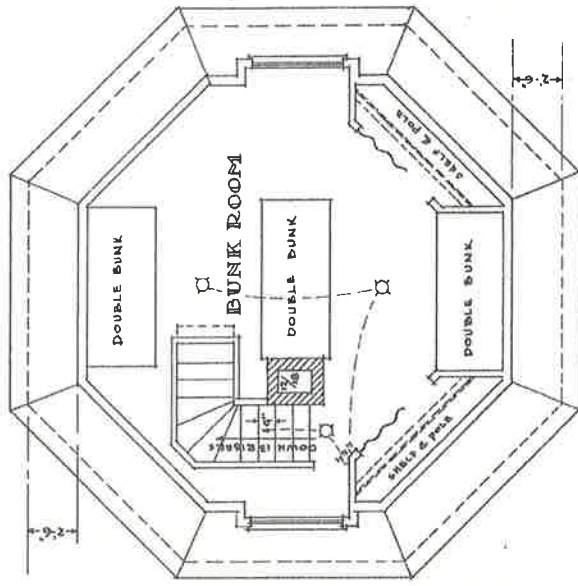


FOUNDATION PLAN  
SCALE 1/8" = 1'-0"

PLAN~IT SERIES

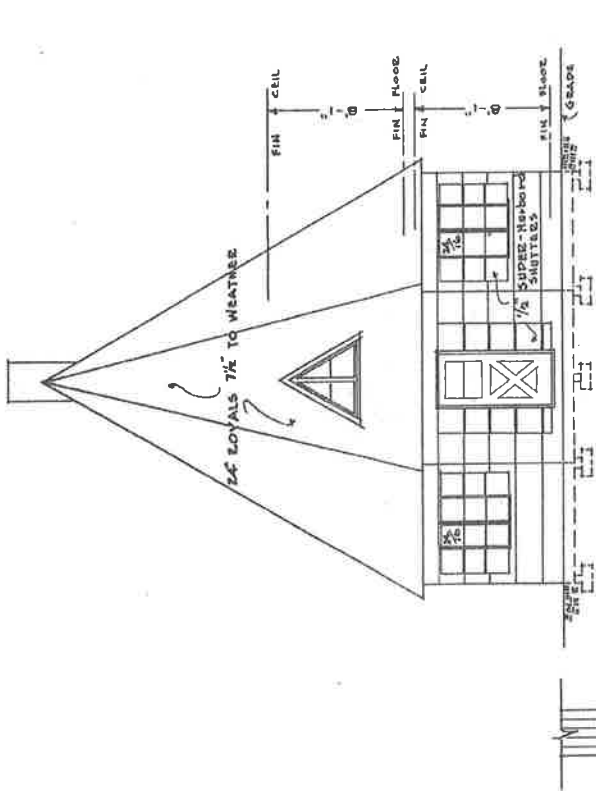


FIRST FLOOR PLAN  
SCALE 1/8" = 1'-0"

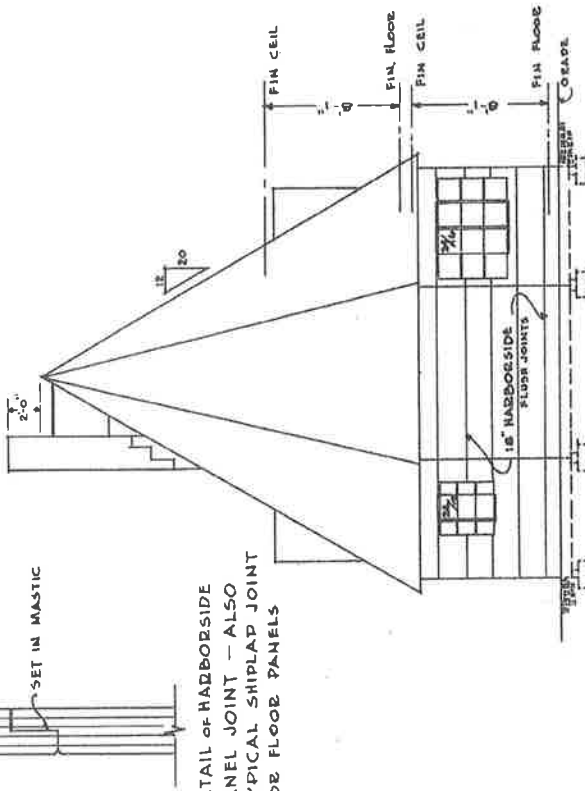


SECOND FLOOR PLAN  
SCALE 1/8" = 1'-0"

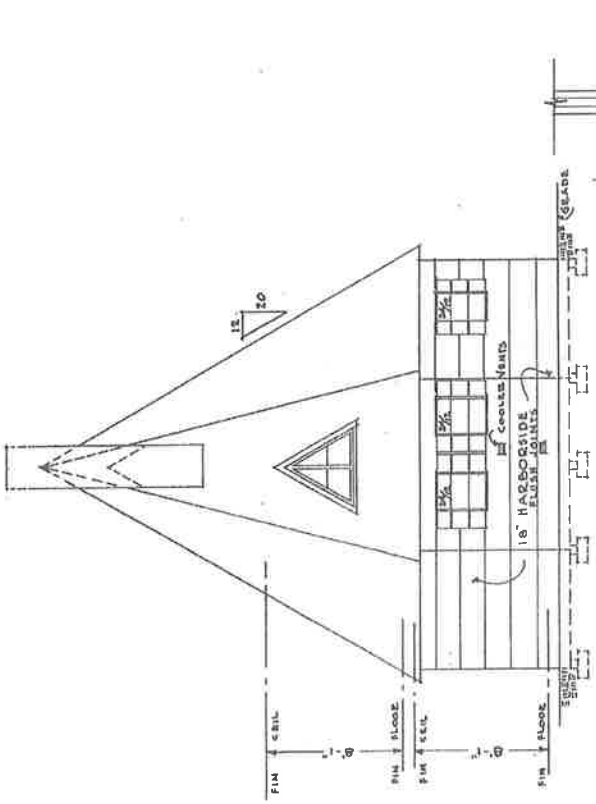
PLAN~IT SERIES



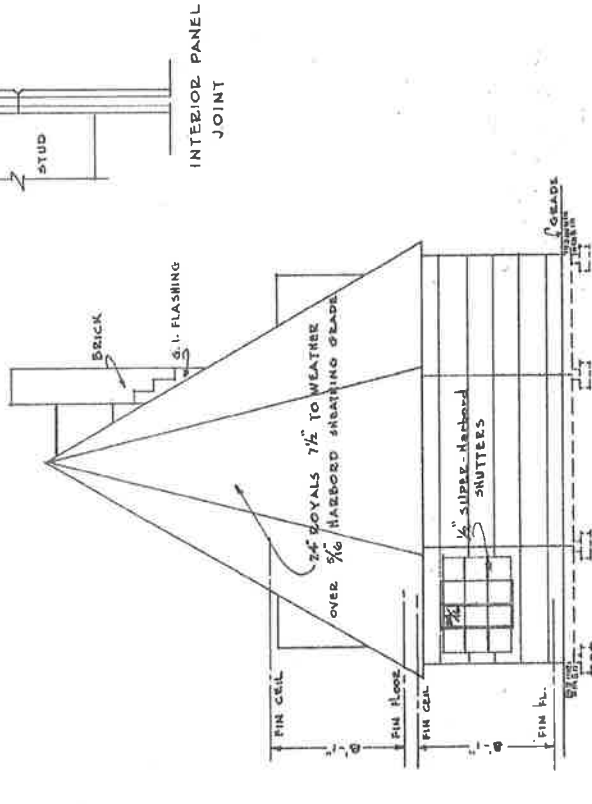
FRONT ELEVATION



SIDE ELEVATION  
SCALE 3/8" = 1'-0"



REAR ELEVATION



DETAIL OF HARBORESIDE  
PANEL JOINT - ALSO  
TYPICAL SHIPLAP JOINT  
FOR FLOOR PANELS

PLAN-IT SERIES

