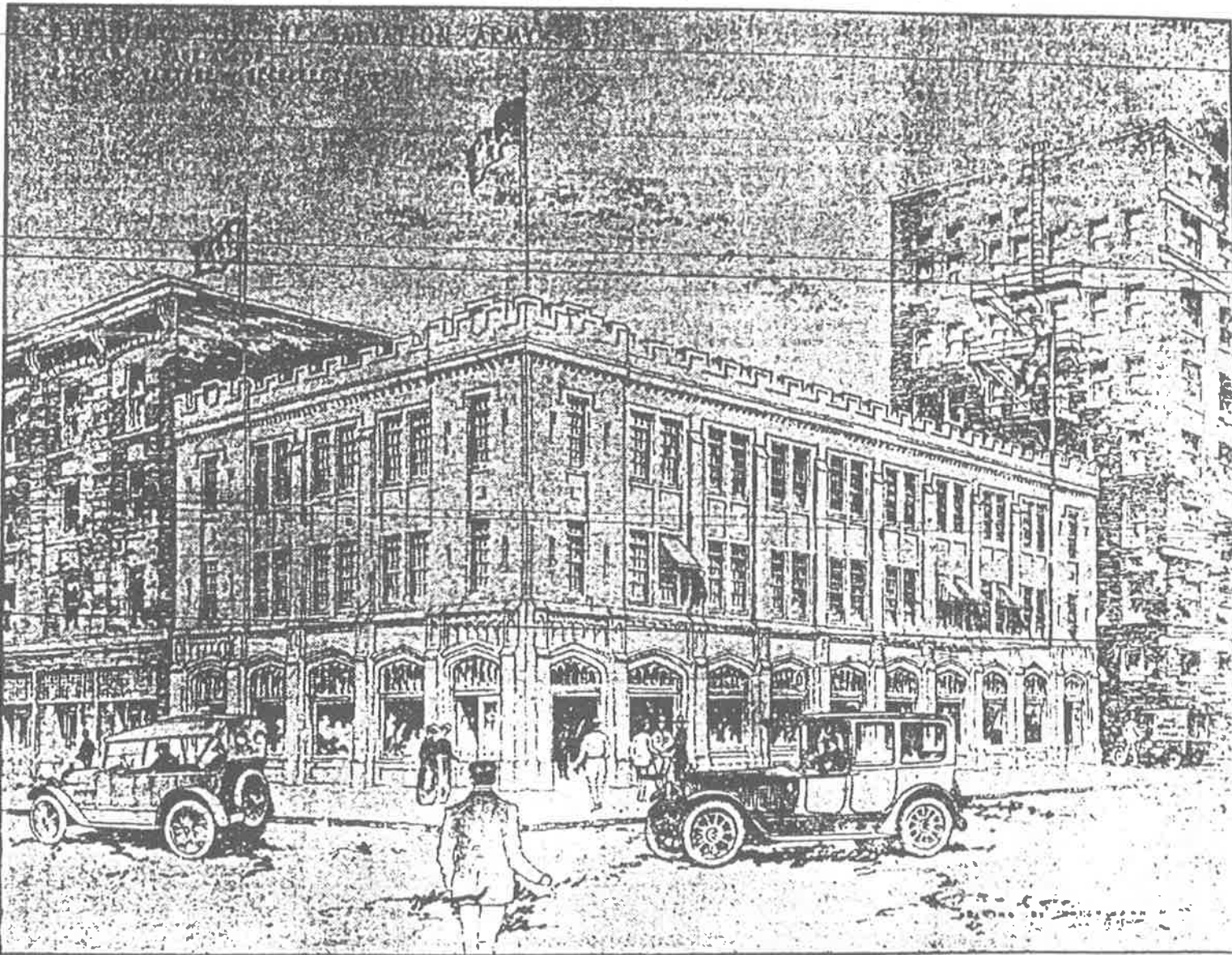


### Proposed Salvation Army Central Service Building for Spokane



Spokane's proposed Salvation Army central service building, for which a campaign for \$135,000 will be waged the "week of opportunity," September 22-29, and a picture of which is shown above, will be located on Main or Trent avenue, close to Washington street.

Army officials have a certain location in mind, a piece of ground on a corner lot on Main avenue, which may be purchased as soon as finances for the building are assured. Archibald G. Rigg, local architect, has completed a design for the proposed permanent

home for the Salvation Army, which he has submitted for approval.

The proposed home service building, which is claimed to be badly needed to greatly increase the scope and efficiency of the Salvation Army throughout the Inland Empire, is to be three stories in height, with a full basement.

The cost will be approximately \$125,000, and every dollar raised in the local campaign will go directly toward the building.

The maintenance for the first year will be paid from the statewide campaign funds, and Captain A. Kranz, field representative, cooperating with the Spokane campaign, is authority for the statement that after the first

and two auditoriums on the ground floor, the central building will be practically self-supporting.

**Headquarters on Second Floor.**

The first floor will be set aside for two auditoriums, which will be used for assemblies, religious services of the various corps and the conduct of young people's instruction classes. These auditoriums will be open to the public and returned soldiers and for gatherings authorized by the army officials.

The second floor will be the headquarters of all branches of Salvation Army work, including a free clinic and free consulting lawyer—the poor man's lawyer; a lunch room and other conveniences.

The working men's club, or hotel, will occupy the third floor, and it will be the policy of the army to furnish comfortable sleeping quarters at a nominal cost. In the basement will be a swimming plunge, shower baths and conveniences for the training of poor children.

Buildings of this character have been erected in a number of cities, and indications are that within the next 12 months every city of importance and size will have constructed such a service building.

**Rented Hall Is House of Sand.**

"A rented Salvation Army hall is a house built upon sand," says Commissioner Thomas Estell, commander of the western states Salvation Army.

"It is easily acquired—only the payment of a month's rent and perhaps a lease to be signed and possession is gained. But the storm comes in the shape of impossible rents, and the house falls. The flood of bills rises, and the organization seeks refuge on a second or third story or flees to some dark alley or unused street, and is never heard of any more. The crowds dwindle, the soldiers are ashamed to be floating from pillar to post, and only a few stick by the army."

ing how to get advantage of a business competitor, than they give to original thinking on economic and

**EXPECTS BIG METAL OUTPUT**

Seen by Official of

24.—Prospects for production through-bright for the fall, to V. P. White, president of the G. & Refining com-pany was here today until tomorrow

Every dam and power plant for the old Helena Light & Power company before it was taken over by the Montana Power company. He was also general manager of the East Helena smelter 17 years ago.

**Colonel Mathews to Fort Casey.**

SEATTLE, Wash., Aug. 24.—Colonel H. T. Mathews, army artillery, formerly a member of the staff of General McLaughlin in the First army

SALVATION ARMY BID  
SPOKANE COUNTY, WA