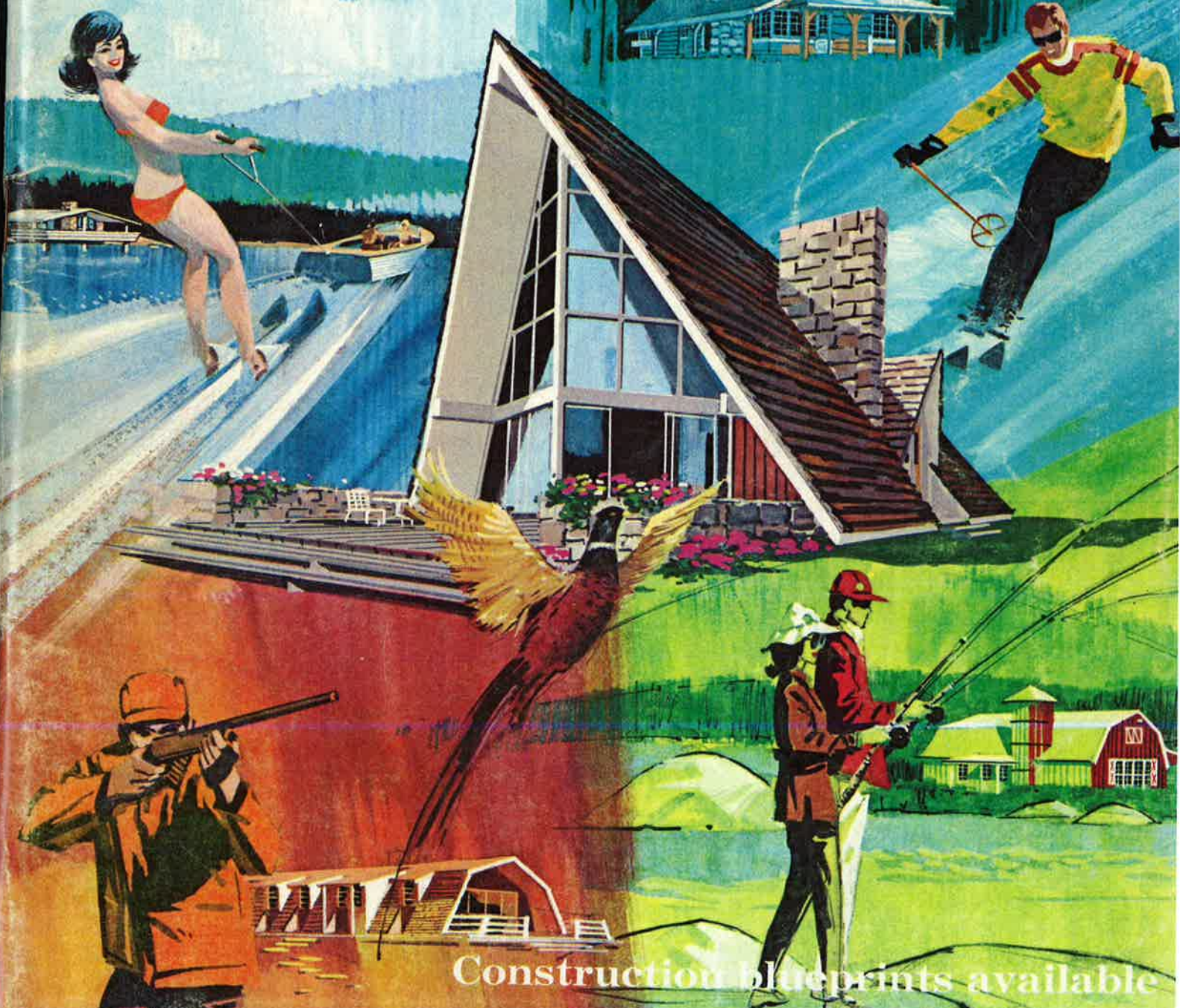


year  
round **Vacation**  
**HOME PLANS**

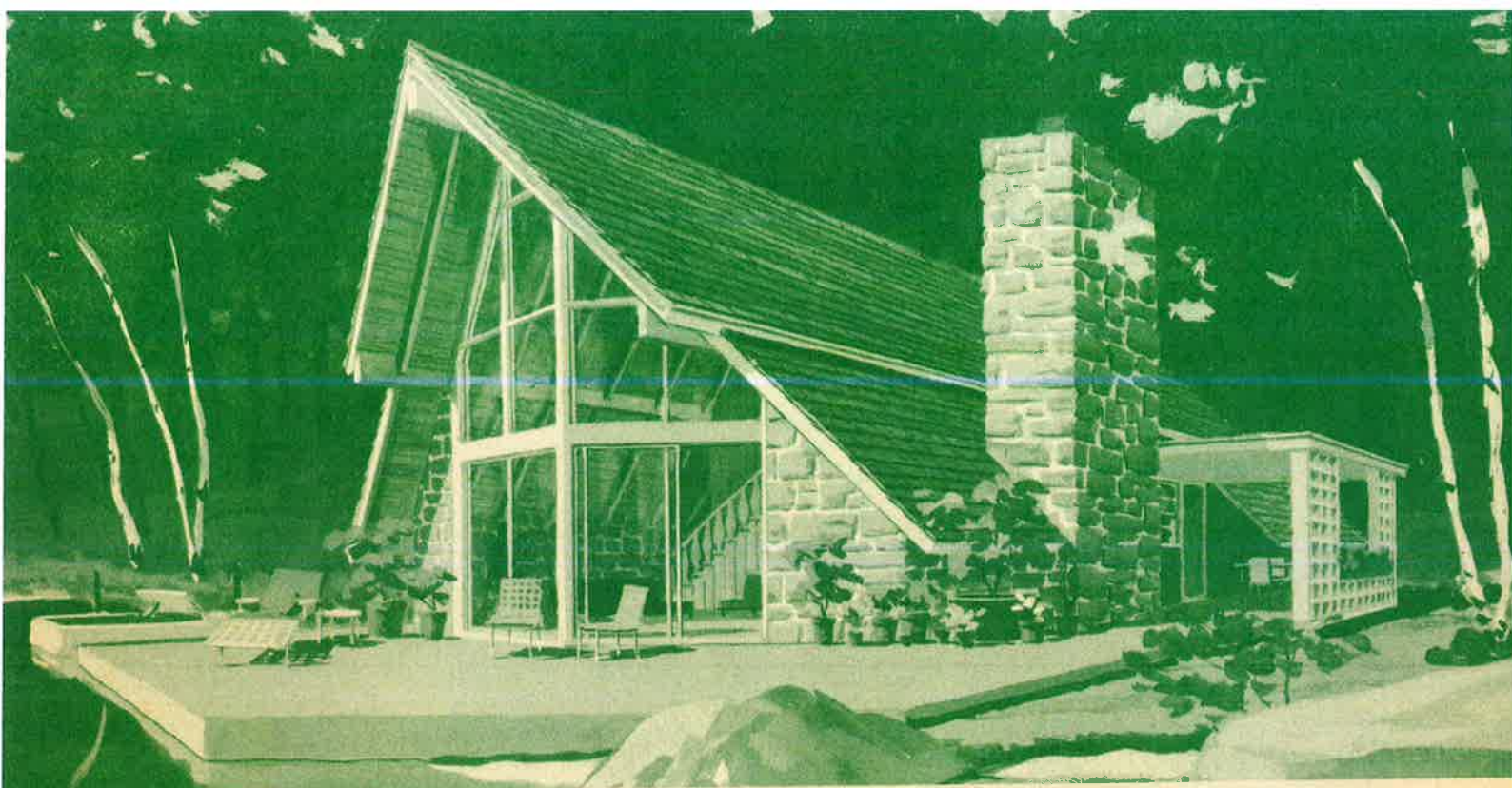
50 EXCITING  
DESIGNS TO BUILD

A MASTER PLAN PUBLICATION ©

75¢



Construction blueprints available

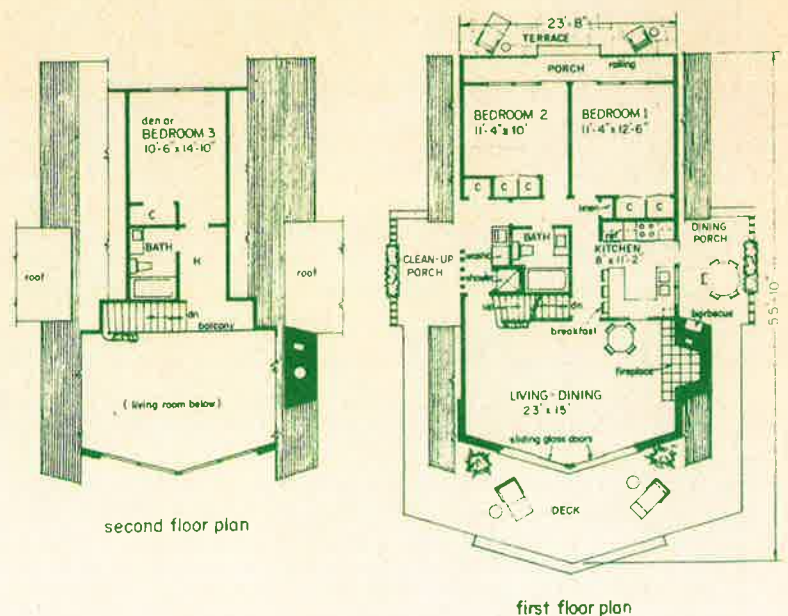


## PROW SHAPED FRONT OF "A" FRAME INCREASES OUTDOOR VIEW

**PLAN P-965**—House area 972 sq. ft. on first floor excluding porches, 321 sq. ft. on second floor including balcony. Summer fun can be enhanced by the atmosphere this beautiful home provides. It has been designed so it can be used in winter and summer. A basement is provided which could be easily eliminated if not required. Three porches offer maximum outdoor living space. The one on the left is for

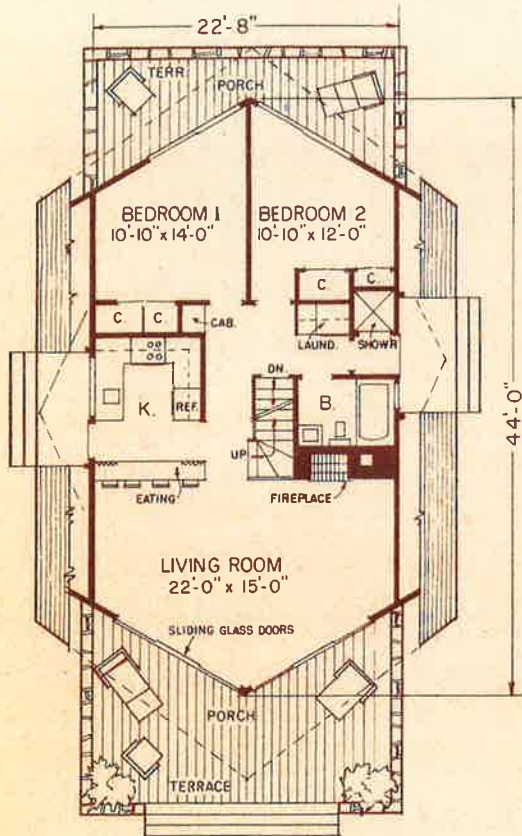
clean-up for the sportsman returning from his activities. A laundry with a utility sink and a stall shower are provided plus a closet for gear. The interior is as dramatic as the exterior as shown in the sketch. Note the oversized log burning fireplace as shown in the sketch. Three bedrooms and two baths can be built by finishing the second floor. Note the "U" shaped kitchen with adjoining dining porch.

*Architects sketch shows rugged maintenance-free interior and balcony over dining area.*

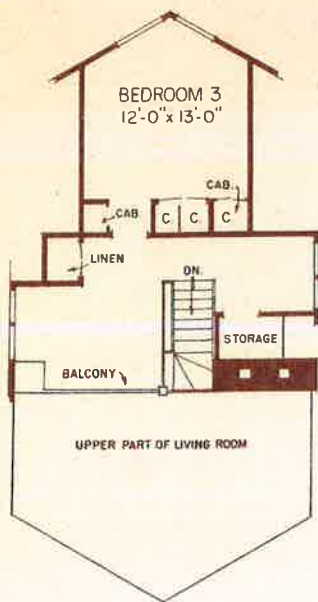


# The cover house

## 2 DRAMATIC



FIRST FLOOR PLAN

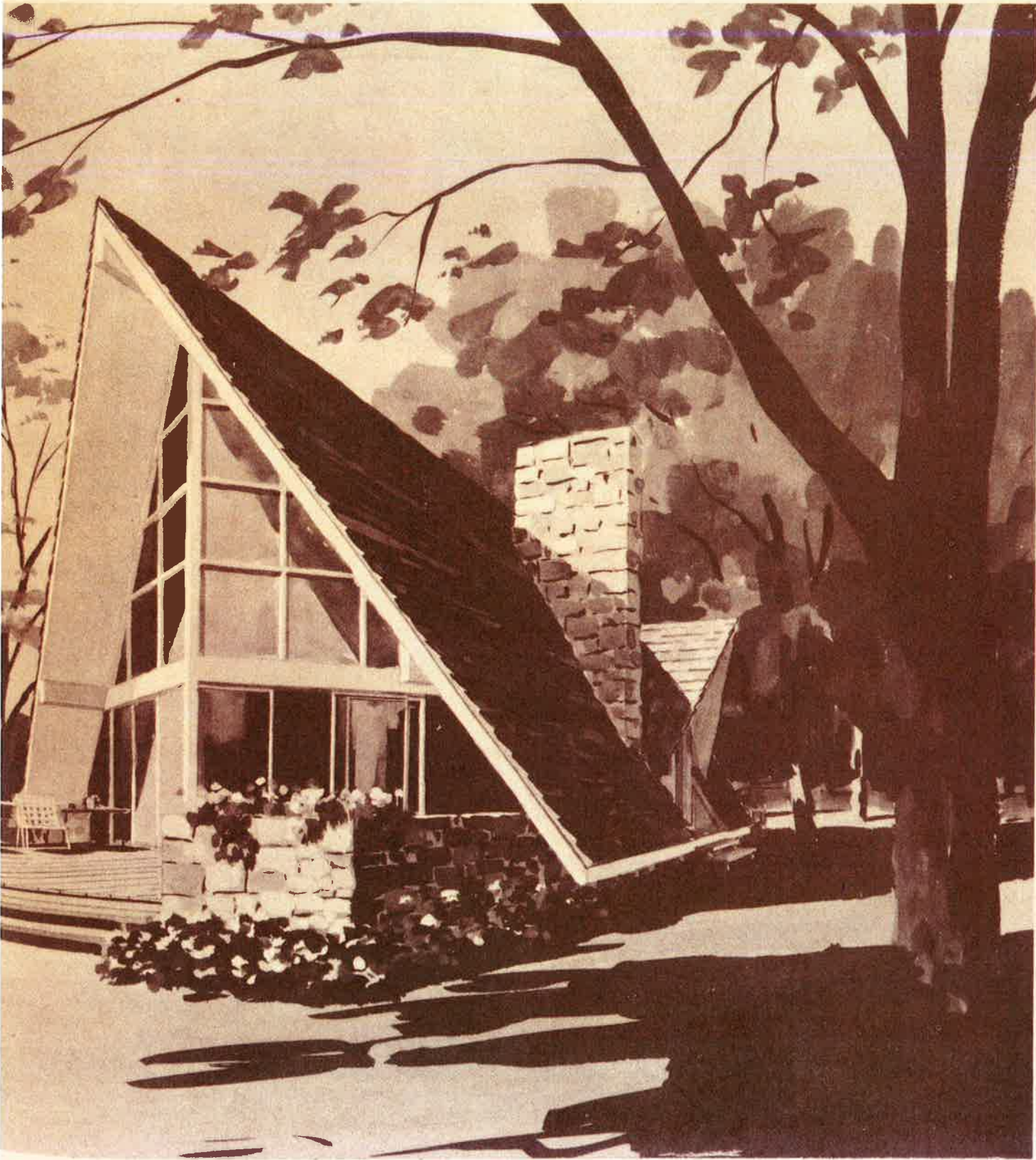


SECOND FLOOR PLAN

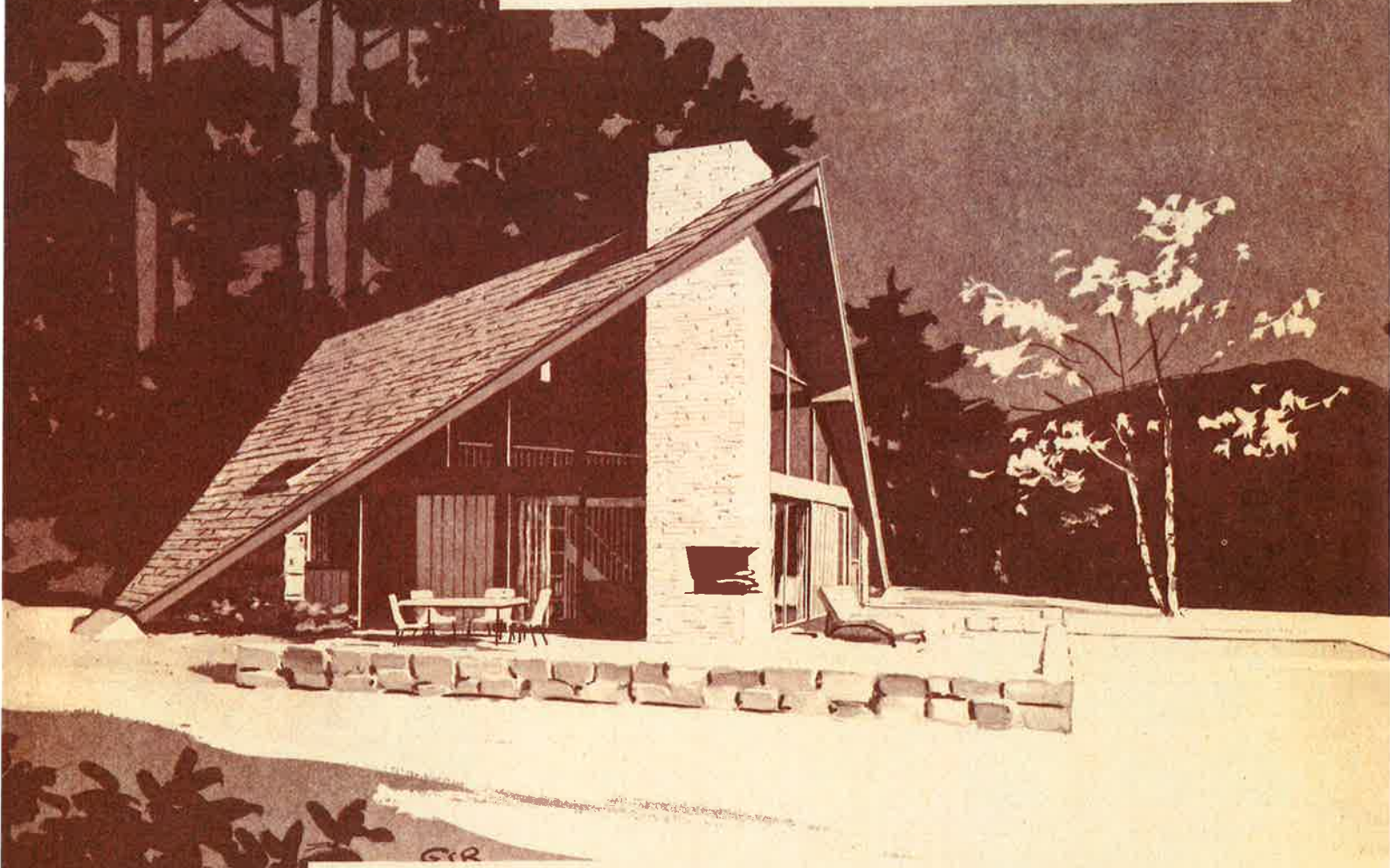


**PLAN P-924**—House area 848 sq. ft. first floor excluding porches, 491 sq. ft. second floor. The A-frame design has never been more dramatically employed than in this roomy, easy-maintenance vacation cottage. Prow-shaped end walls use wide expanse of glass to take full advantage of the view of your favorite landscape. The soaring roof protects porches and entries from the weather. With a full basement and three good-sized bedrooms, the cottage could easily fill year-round living requirements. Closets and other storage facilities are unusually generous throughout. The kitchen is designed for step-saving efficiency—with an adjacent counter for meals. The spacious second-floor balcony overlooking the living room offers an ideal area for relaxation and rainy-day activities.

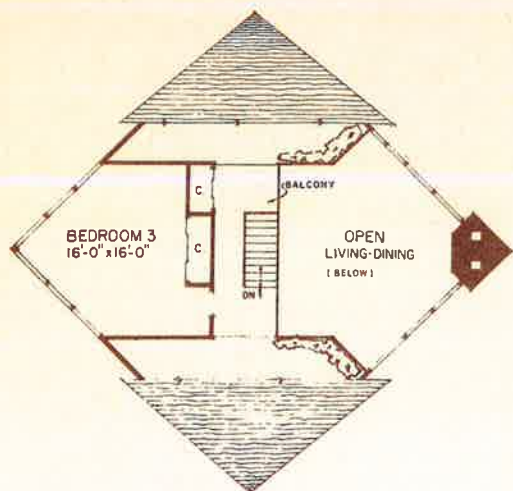
**COMPACT FLOORS**



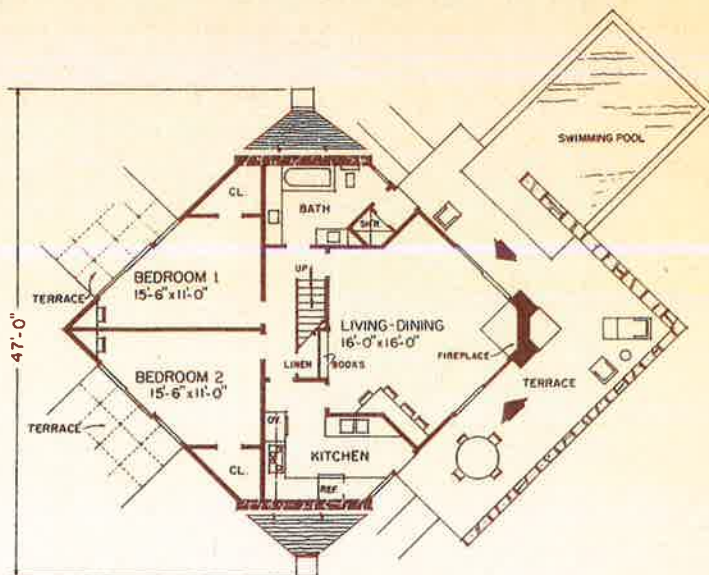
**PLAN P-910**—House area 964 sq. ft. on first floor excluding terraces, 336 sq. ft. on second floor. Full advantage of the versatile "A" shape is taken here to expose as much of the interior as possible to the outdoors. Rooms are of unusual shape in order to pack-in maximum convenience and comfort. Living-dining room has a dramatically high cathedral ceiling. A 16-foot balcony overlooks part of the room. The dominant design feature—the massive chimney—houses both a fireplace and an outdoor barbecue.



**FOR THE TRUE OUTDOOR LOVER—  
WHO WANTS A TOTAL OUTDOOR VIEW**

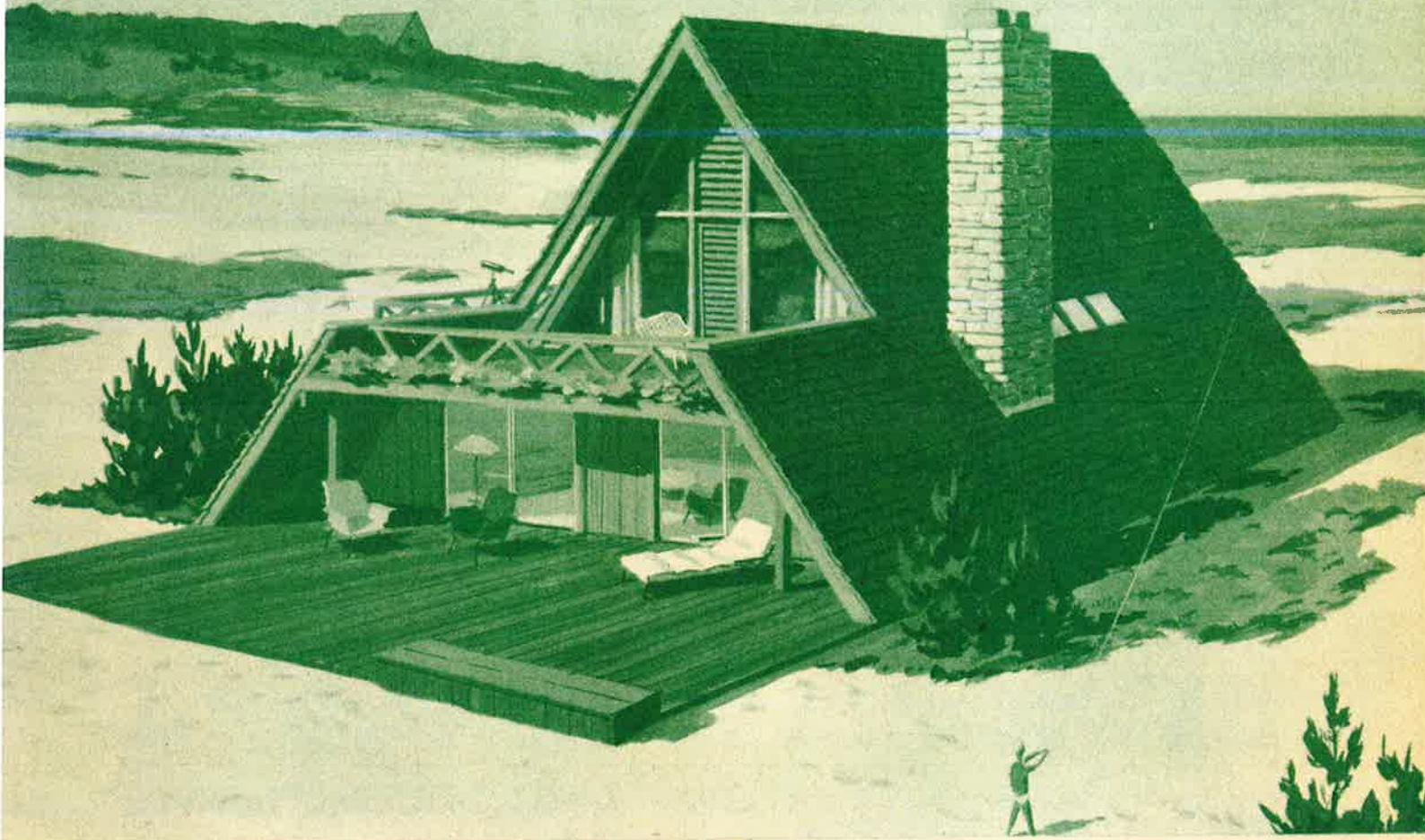


SECOND FLOOR PLAN



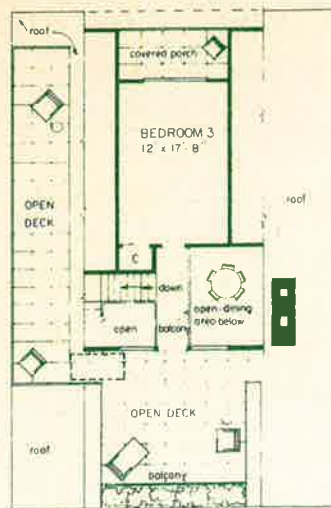
FIRST FLOOR PLAN

# The Cover House

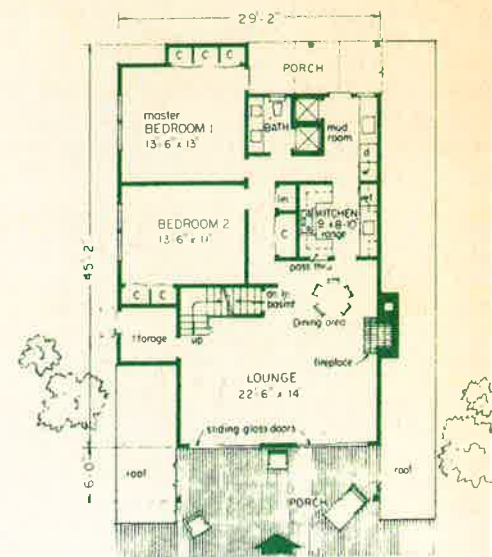


## NEW TWIST FOR CLASSIC A-FRAME

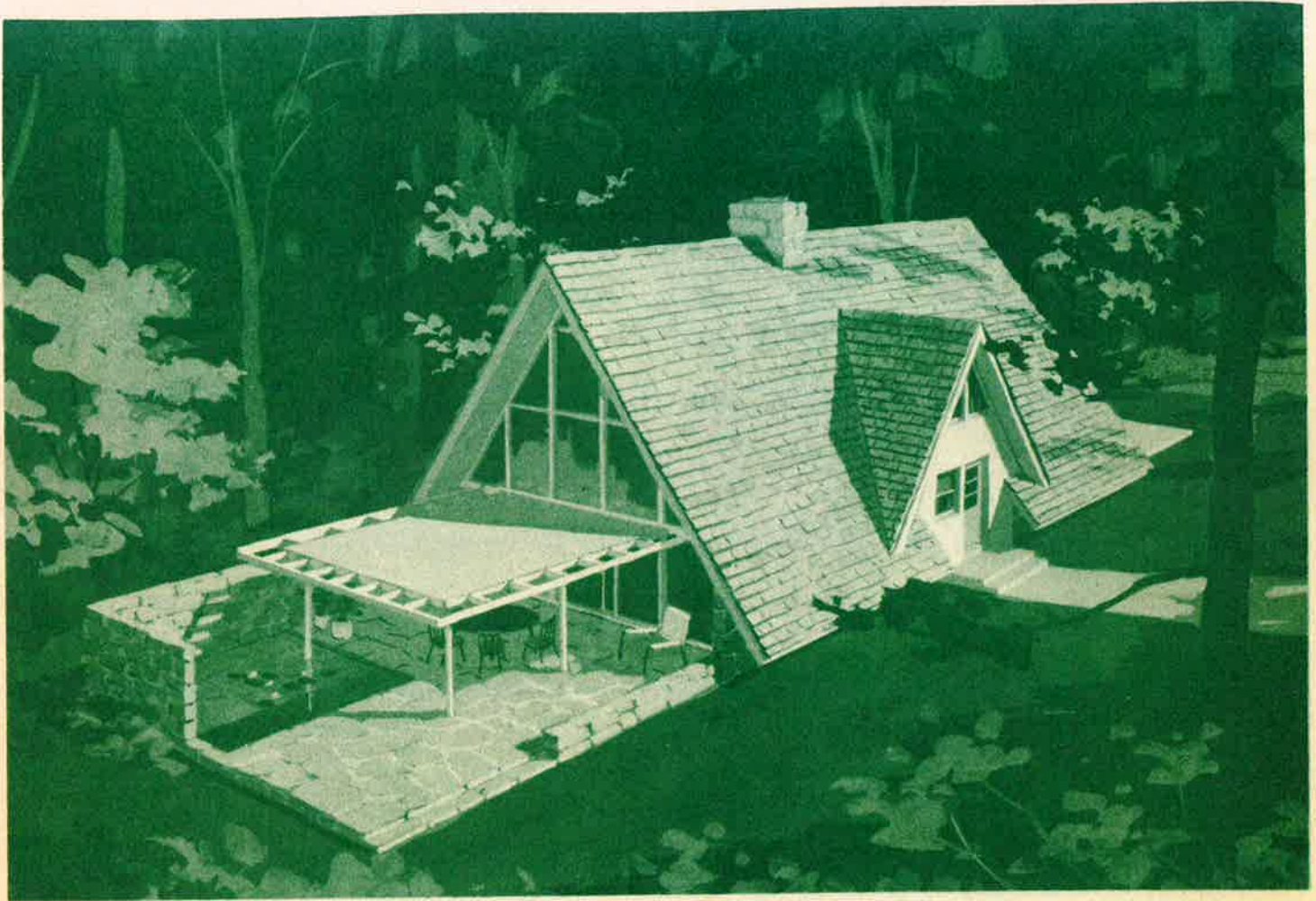
**PLAN P-1020** — House area 1,155 sq. ft. on 1st floor, excluding porch. 306 sq. ft. on 2nd floor excluding balcony and deck. A new approach to the familiar "A" has opened the classic roof to expose a wide, open, upper sun deck for an unrestricted view of vacation country, with a low, open railing which gives the feeling of ship-deck living. An upper side deck is accessible through an opening in the roof, creating a separation of two outdoor living areas. Inside the upper story, a balcony which leads from the front deck overlooks a portion of the lower lounge and dining area. The rear bedroom has its own deck. At ground level there are two bedrooms and a bath with double lavatory counter and shower plus an additional stall shower in the "mud room" off the rear porch. This area also includes a laundry. A full basement lies under the entire first floor and a heating unit could be located here. This factor plus insulated walls qualifies the structure for comfortable year-round living. Plenty of closets help to make living easy and enjoyable.



second floor plan

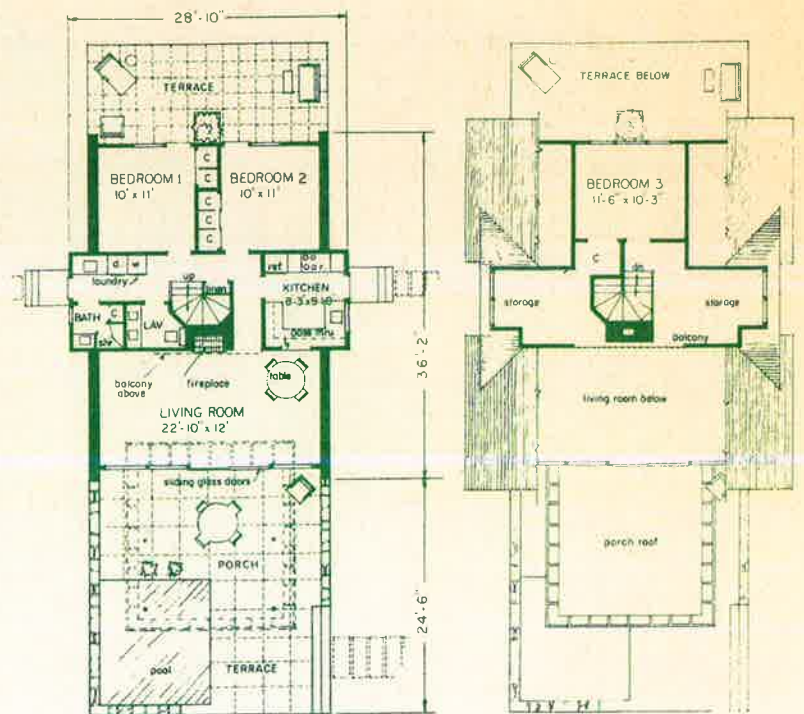


first floor plan



## AN A-FRAME WITH A DIFFERENCE

**PLAN P-995** — House area 940 sq. ft. on 1st floor excluding porches and terraces. 402 sq. ft. on 2nd floor including storage and balcony. An interesting approach to the popular "A" is found in a modified design with the main rafters supported on side walls about 6' high, rather than proceeding down to grade. This encompasses all the usable inside area as living space. Also, an integral deck starts at the living room as a trellis and projects outdoors as a 17' square of covered decking. The entire facade is glass, making it a wonderful house for a view-endowed property. The use of triangular gables on either side is a decorative interruption of the A-frame roof; these gables also provide headroom for kitchen and bath. Side bath entrance is for direct use from outdoors; the laundry is also conveniently located in this area. The kitchen includes a pass-through to the dining area in the living room. There are two bedrooms on the first floor, a third at the rear of the upstairs balcony which overlooks the living room. A full basement could be included if it is required.

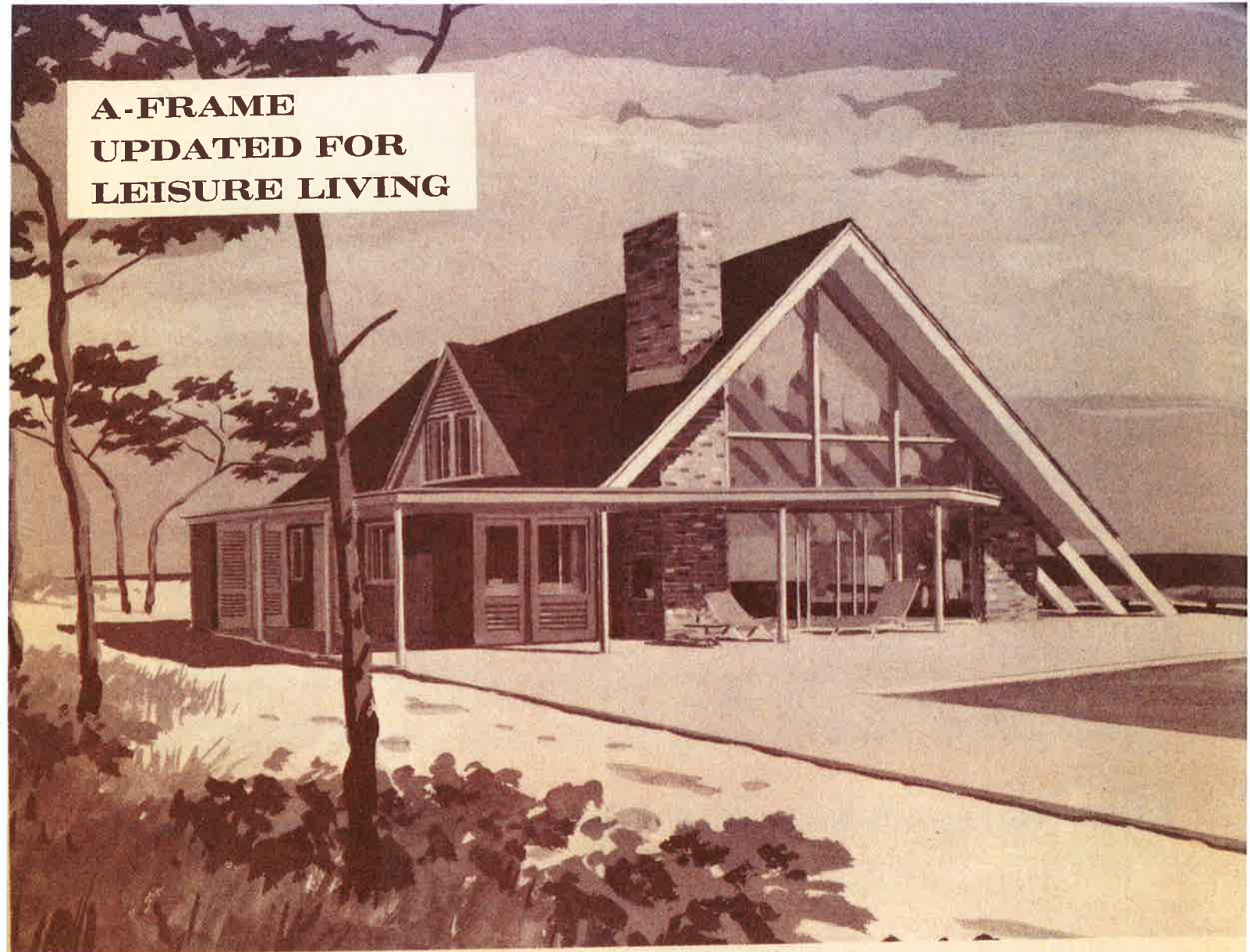


first floor plan

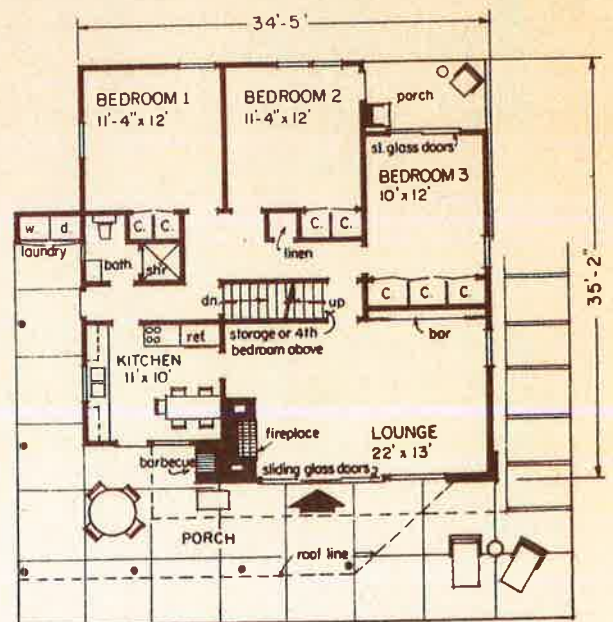
second floor plan



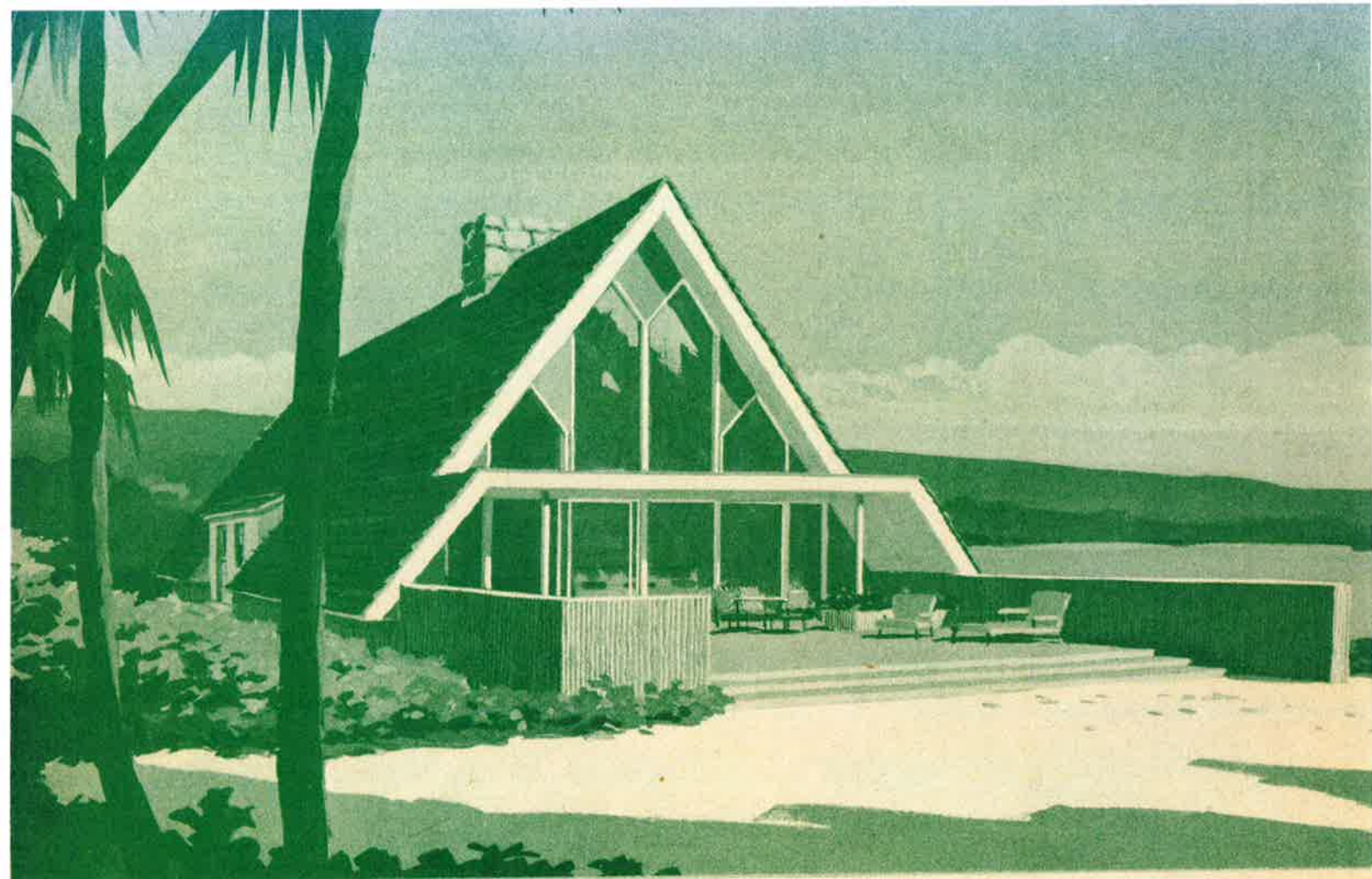
# A-FRAME UPDATED FOR LEISURE LIVING



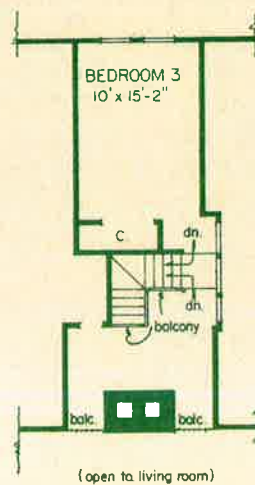
**PLAN P-1006** — House area 1,106 sq. ft. on first floor excluding porches, laundry and patio. Perfect for beach or mountain, this retreat gives the A-frame a new look. One side of the "A" slopes to the ground in the conventional manner; the other stops at a flat deck which wraps around two faces of the structure, creating a covered porch. Weather-protected by the deck roof, 10'-wide sliding glass doors open the lounge for unrestricted indoor-outdoor living. Another entrance leads to the kitchen for easy serving of meals on the porch near an outdoor barbecue. The lounge, with its 1½-story sloping ceiling, has a 10' built-in bar counter and a large wood-burning fireplace, making it an informal setting for entertaining. Two of the three bedrooms on the first floor open directly onto a private porch. Above the sleeping area, because of the steep roof, there is second-floor space which is available for sleeping or storage. Louvered doors enclose an outdoor laundry conveniently placed near the kitchen.



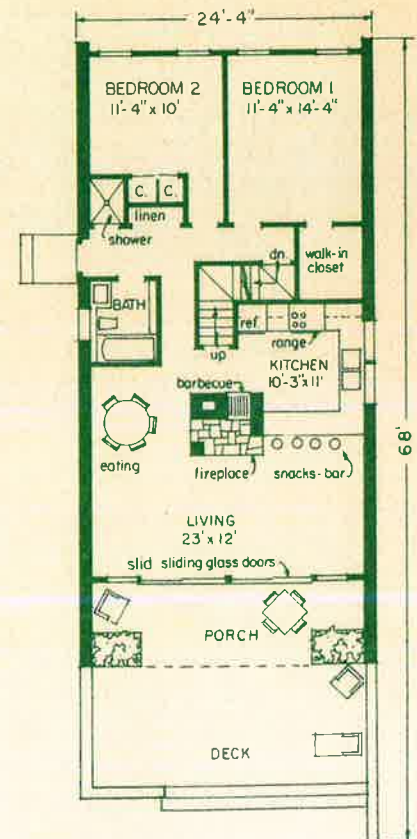




## A-FRAME UPDATED TO INCREASE SPACE

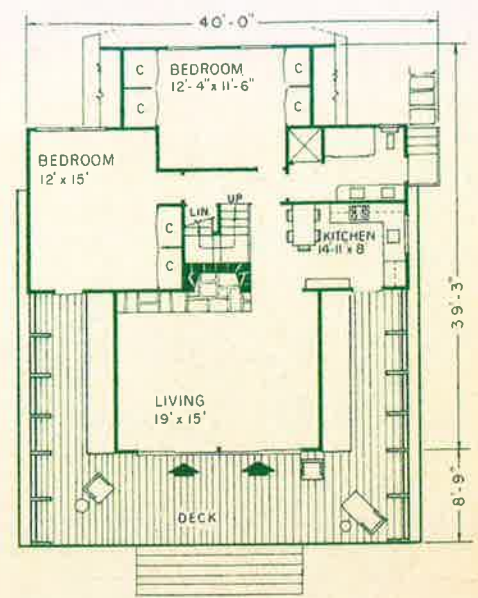
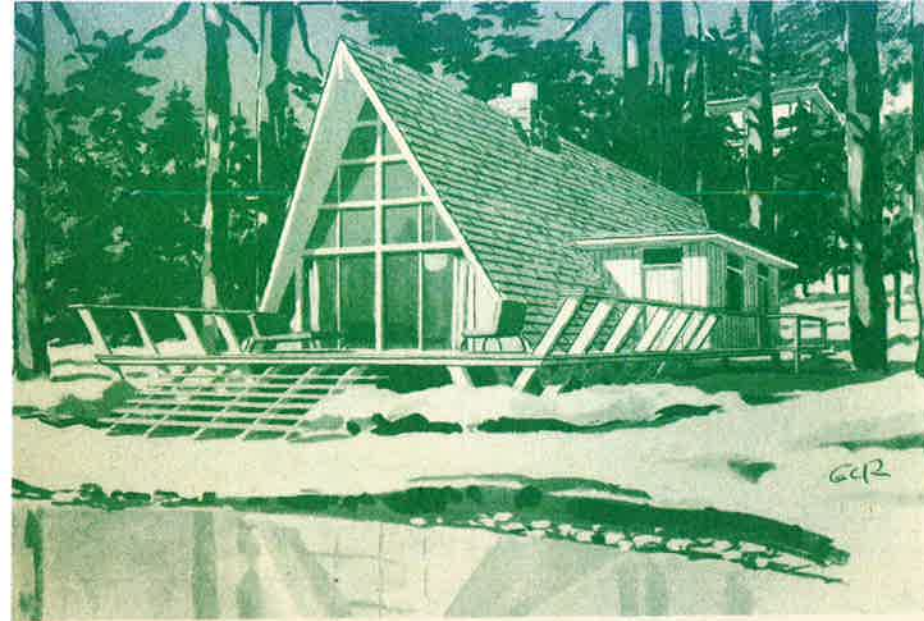


second floor plan

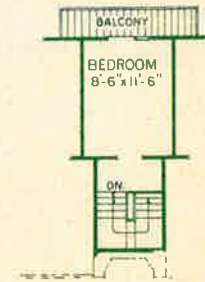


first floor plan

**PLAN P-1042** — House area 1,095 sq. ft. on first floor excluding deck and porches, 200 sq. ft. on 2nd floor, excluding balcony. Here is a departure from the A-frame which raises the A on 5' side walls to increase the amount of usable floor space on both upper and lower levels. The living room runs the full width of the structure, taking advantage of the unrestricted view through the all-glass facade. To the rear, a unique square fireplace has openings on three sides, one facing the seating area, another facing dining L and a third which is a barbecue in the kitchen. One full wall of the kitchen is a snack bar which opens to the living room. The balance of the lower level houses two bedrooms, a bath and an auxiliary shower near the door for swimmers. A third bedroom is located on the upper level, as is a balcony room which overlooks the living area. Special features: deck porch; full insulation; walk-in closet; snack bar; balcony.



FIRST FLOOR

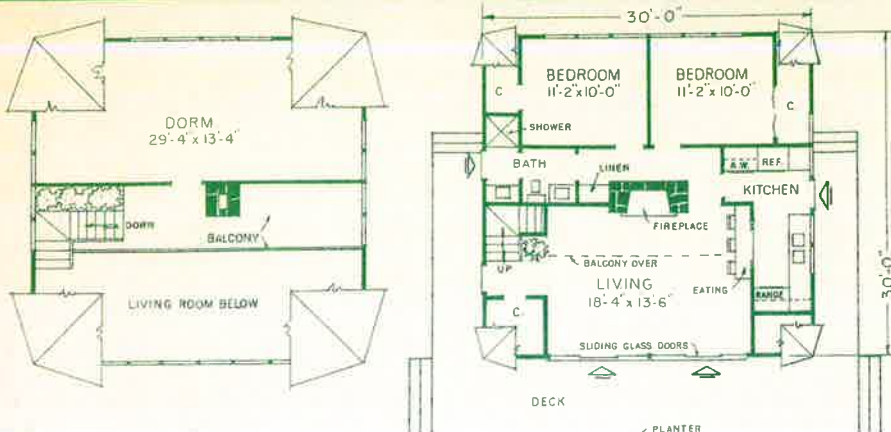
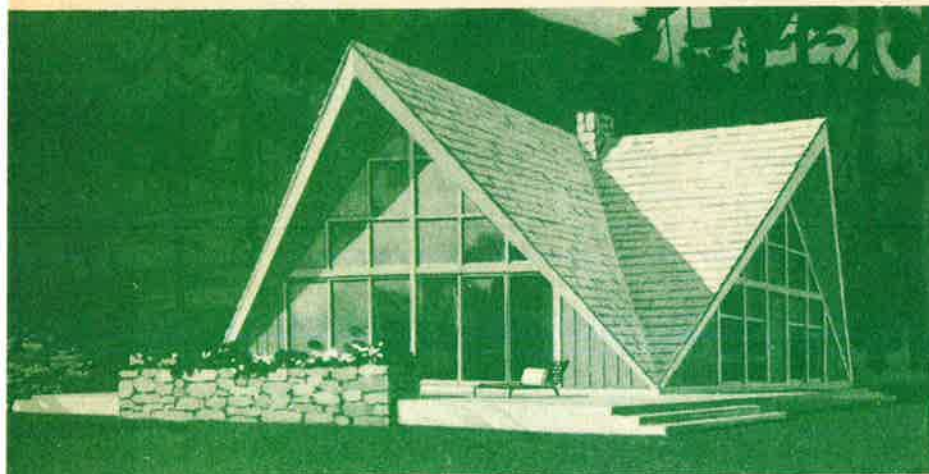


SECOND FLOOR

**PLAN P-862**—House area 1,012 sq. ft. first floor, 129 sq. ft. second floor. This sturdy, maintenance-free A-frame design ingeniously makes maximum use of every square foot of space. The high-peaked window wall at the front is a dramatic visual accent both inside and out. The spacious deck wraps around three sides

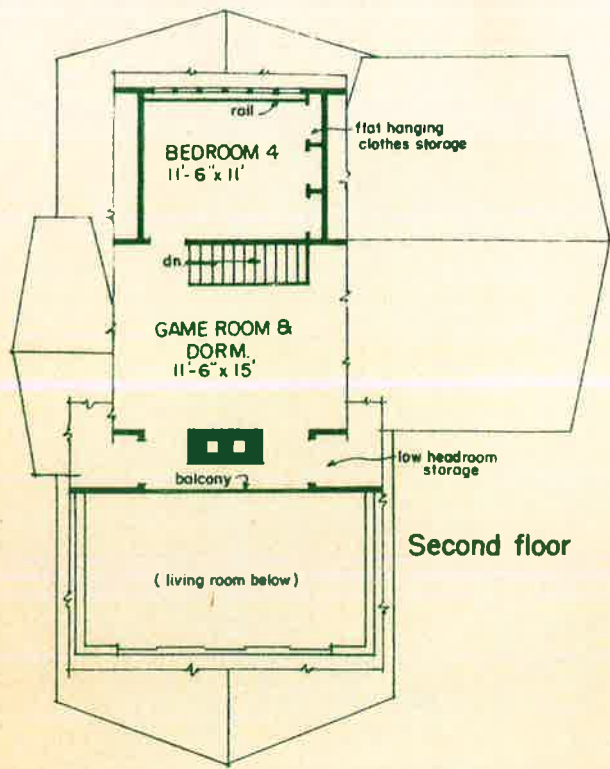
of the living room to provide wide-open spaces for outdoor activities and relaxation. The compact hide-away bedroom on the second floor has its own private balcony. Both a shower and a tub—as well as twin lavatories—are provided in the bathroom, which may be entered directly from the out-of-doors.

## .. Four Popular

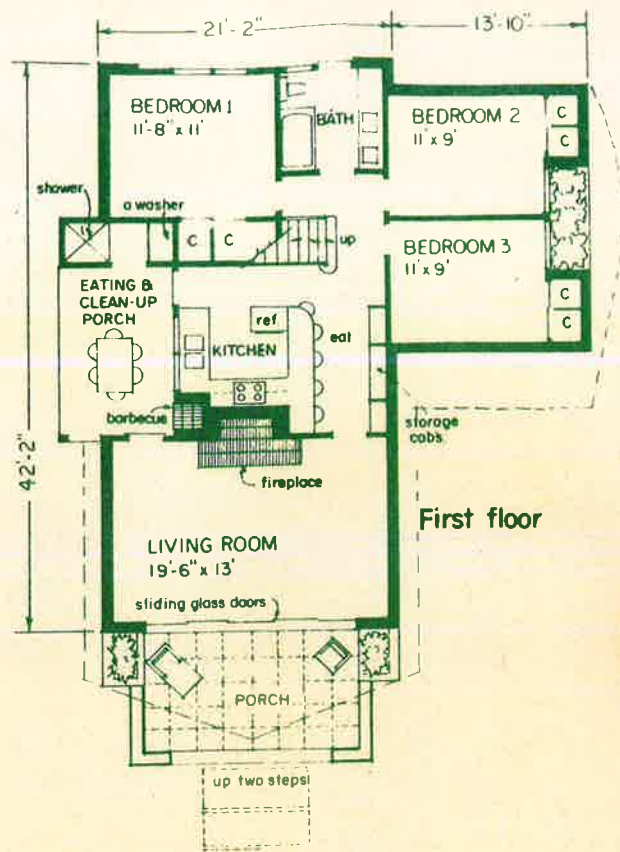


**PLAN P-884**—House area 900 sq. ft.

A high degree of livability and a minimum of maintenance requirements are built into this ingeniously designed double A-frame vacation home. Two good-sized bedrooms on the ground floor and a high dormitory above make it the perfect vacation retreat for a large family. The balcony offers a dramatic view of your own living room and—through the entire end wall of glass—of your favorite outdoor scenery. Dining area has a wide pass-through from the compact and efficient kitchen. Massive stone fireplace dominates the living room and—together with the hall arrangement—clearly separates the living and bedroom areas for sleeping privacy.



Second floor

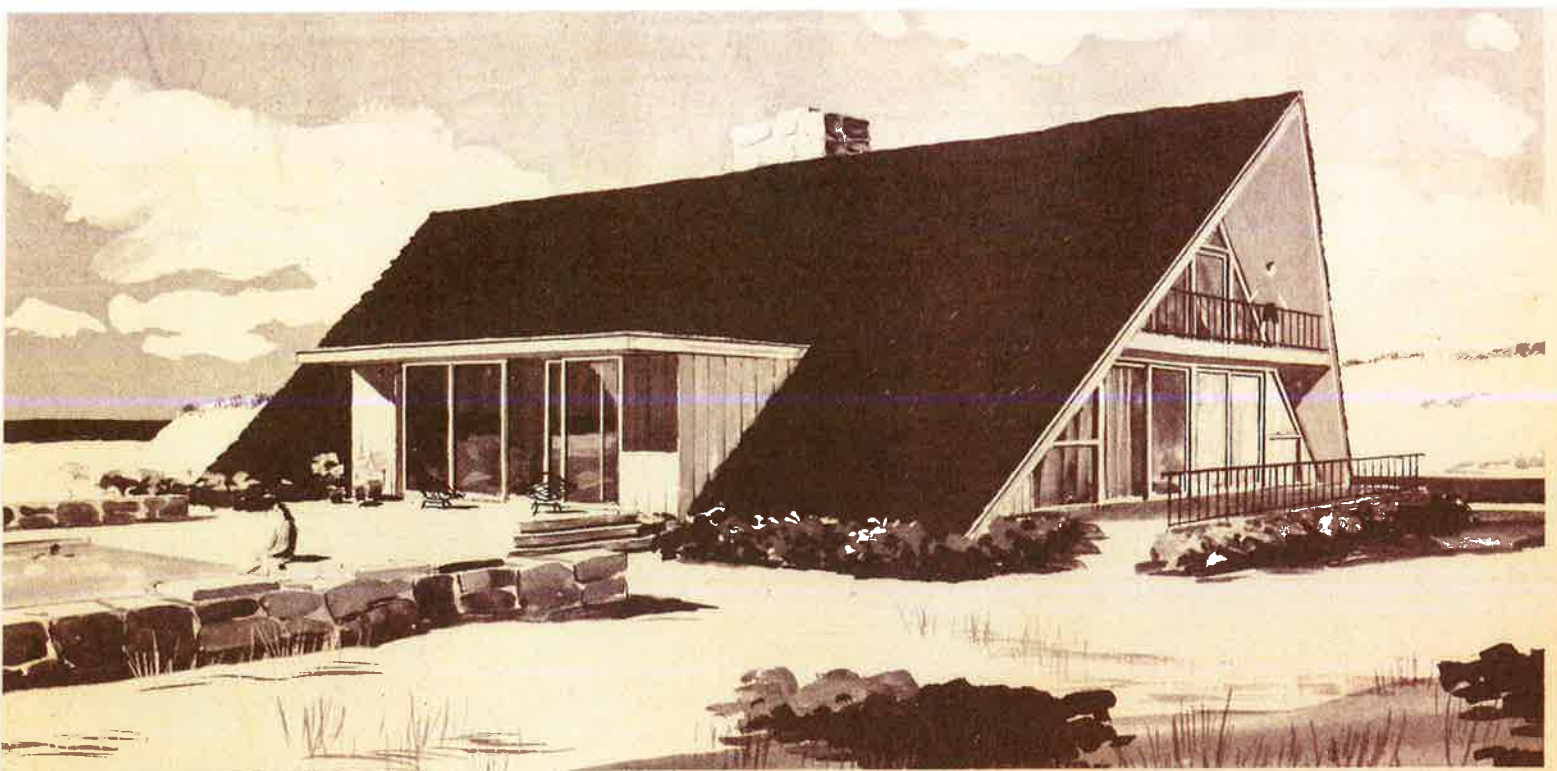


First floor

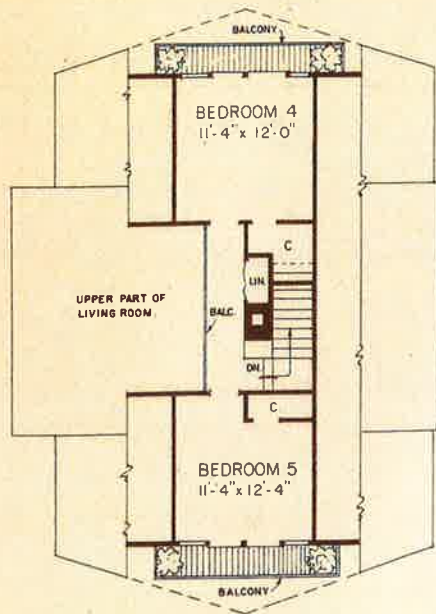
## TWO WINGS ENLARGE THE CLASSIC "A"

**PLAN P-974**—House area 1,100 sq. ft. on first floor excluding porches, 366 sq. ft. on second floor. A beautifully detailed version of the A-frame has the striking glazed façade of that style, but incorporates more living space by adding two side wings. The typical features of this vacation design are used to best advantage. For example, the two-story living room is dramatized by an inglenook created by a cantilevered balcony overhang. The absence of side windows in the A is compensated for by skylights which admit a view of the sky and treetops as well as light. Meals can be served at a long dining bar between living room and kitchen; or, for more rustic dining, the covered porch with a built-in barbecue is appealing. This porch also includes a shower and washing machine so that clean-up after outdoor activities can take place outside of the house proper.

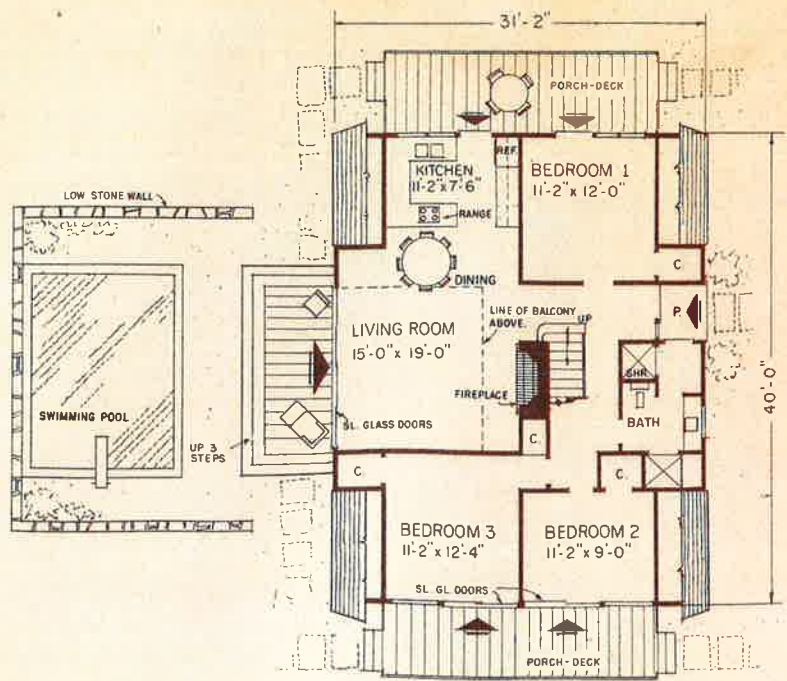




## 5 BEDROOMS OFFER SUMMER FUN TO RELATIVES & FRIENDS TOO



SECOND FLOOR PLAN

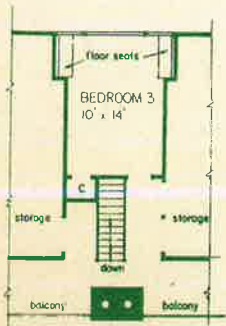


FIRST FLOOR PLAN

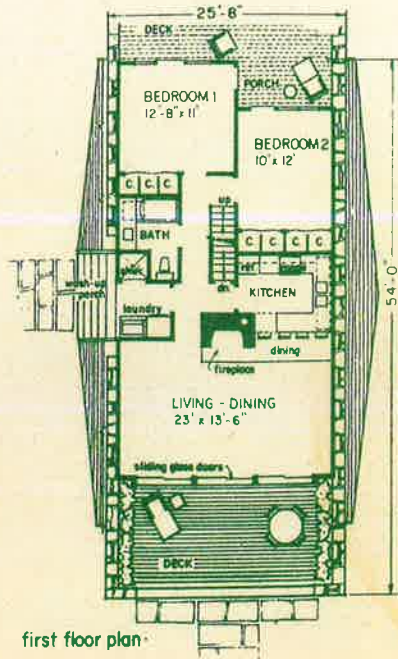
**PLAN P-908**—House area, 1,075 sq. ft. on first level, 437 sq. ft. on upper level. The popular and practical A-frame is, in this example “broken out” on both sides to become more livable. Flat-roofed extension on one side adds space to living room and provides access to the terrace and pool. A similar extension on the other side accommodates the front entry, bath and storage. While it’s unusual to find five bed-

rooms in a vacation home, they nestle into this plan easily. The upper level bedrooms have private balconies—each with an expansive view. Essentially every room has direct access to one outdoor-living area or another. With sliding glass doors open, the home becomes “as big as all outdoors.” Extra large log-burning fireplace in the living room is directly under the upper level balcony.

## CAREFREE A-FRAME PROVIDES PRACTICAL VACATION LIVING



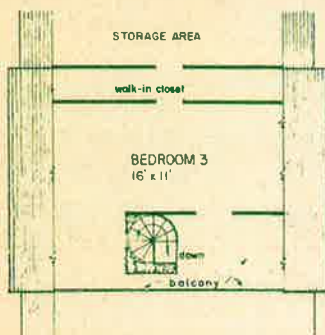
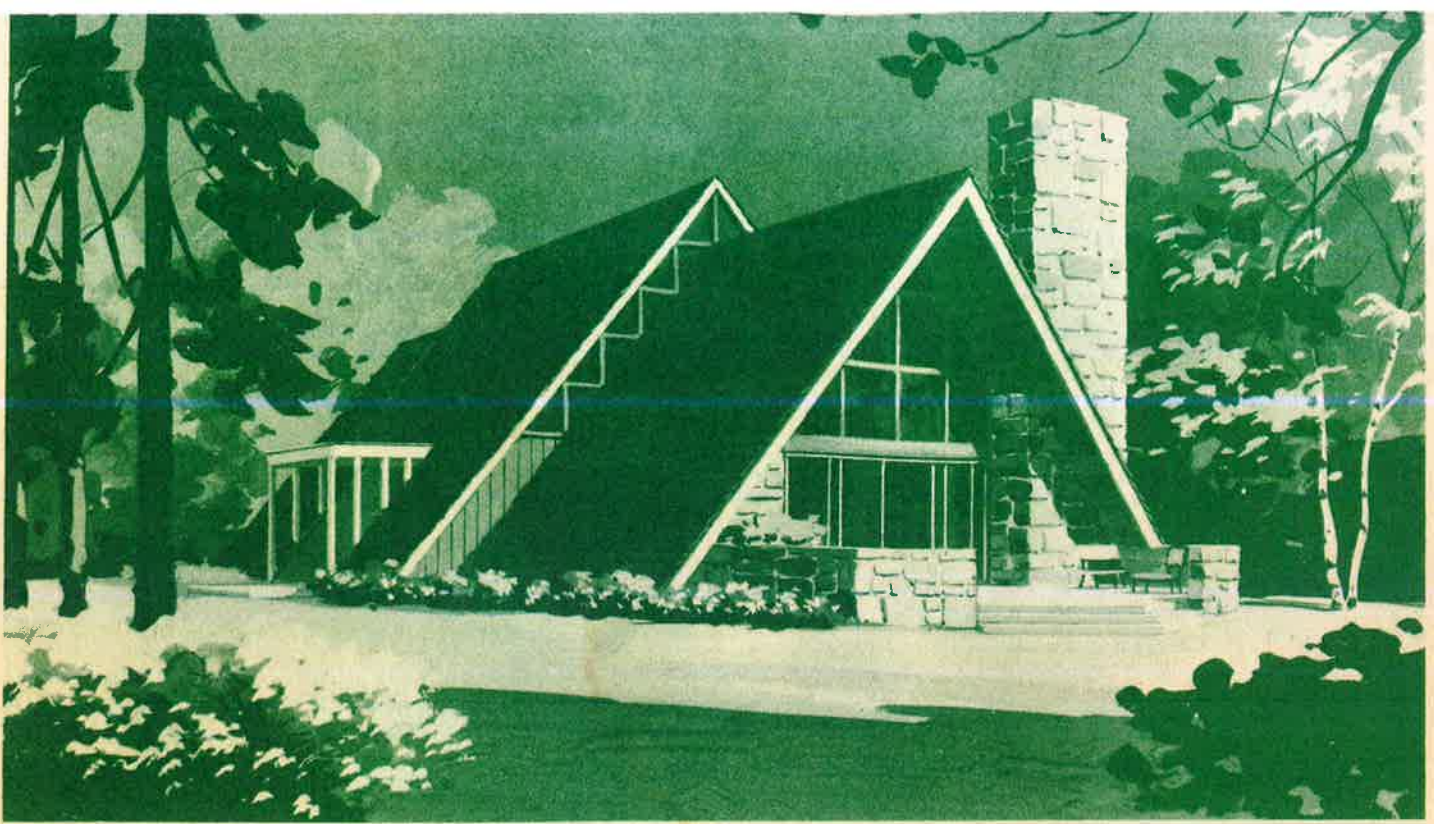
second floor plan



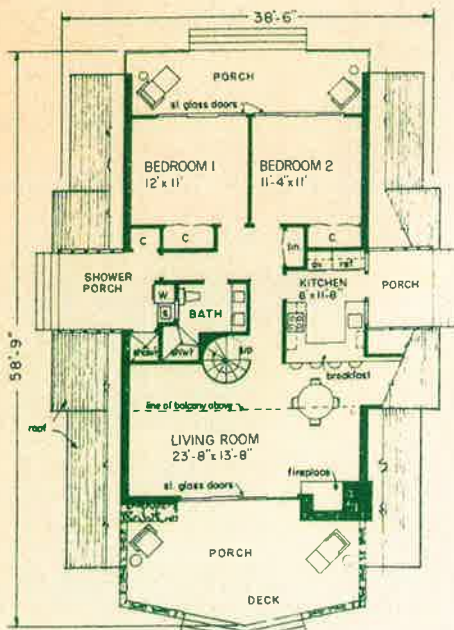
first floor plan

**PLAN P-961** — House area 962 sq. ft. on first floor, excluding decks, 324 sq. ft. on second floor, including balcony. The "A" principle is used in this design to within 4' of the floor, at which point two low stone walls form the balance of the structure. This device leaves more space inside by alleviating the headroom problem inherent in many A-frames. Almost half of the 11' x 19' front deck is covered by the roof overhang, providing weather protection and sun control for indoors. There are also a rear deck and a side porch containing a stall shower and laundry equipment, practical ideas for vacation living. Front wall of wood framing, glass and sliding doors gives the living-dining area, which is open to the peaked roof, an unrestricted view of outdoors. Counter-type dining space between kitchen and living area is convenient for entertaining. Both kitchen and bath receive natural light from plastic domes installed in roof over each area. Two rear bedrooms open to sheltered deck. The second or balcony floor provides eaves storage. For year-round use, the plan offers a full basement for heating unit and insulation.





second floor plan

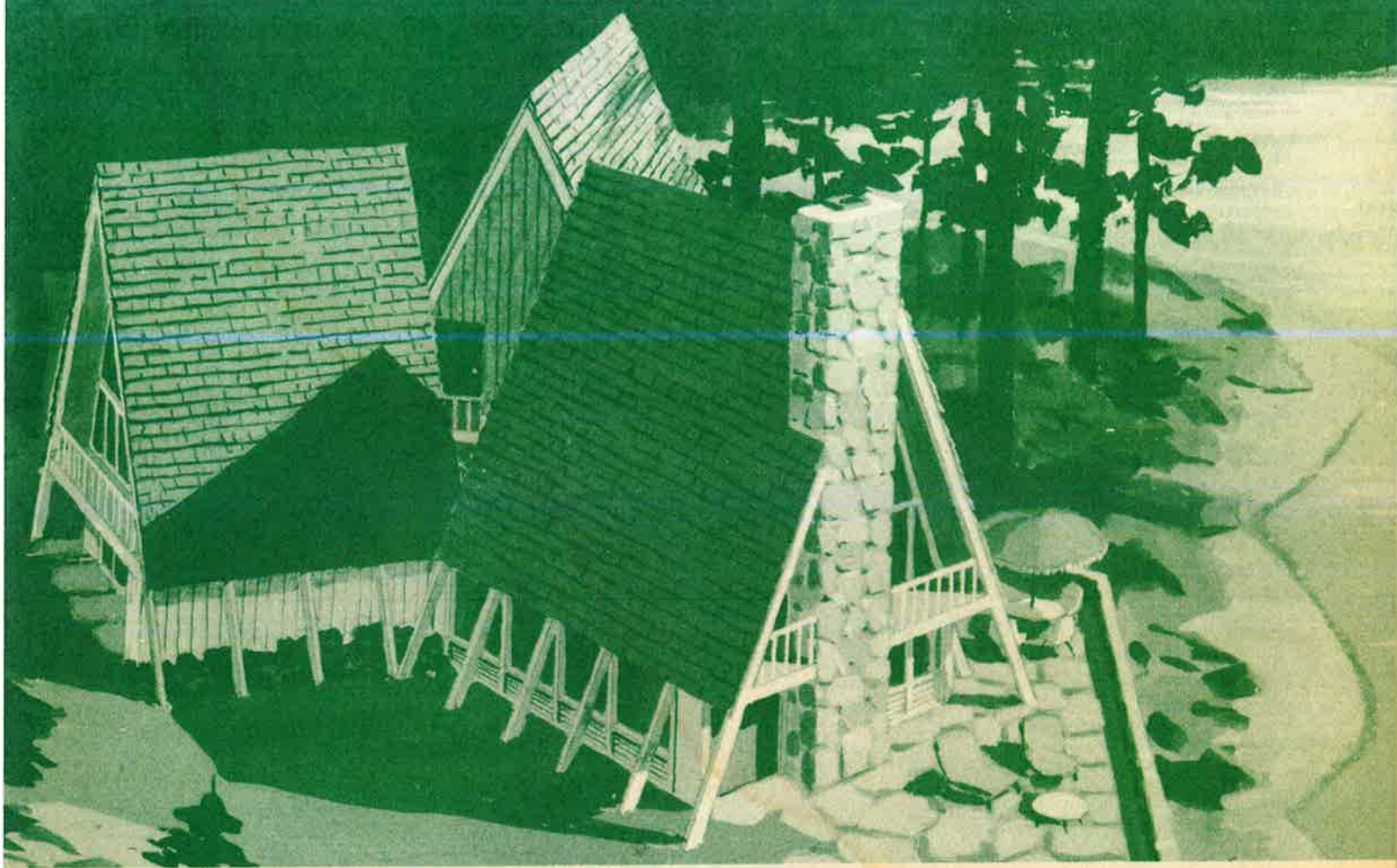


first floor plan

## DOUBLE A FRAME PROVIDES VERSATILE LIVING

**PLAN P-945** — House area 981 sq. ft. on first floor, excluding decks, 187 sq. ft. on second floor, excluding balcony and storage. This dramatic, double A-frame cottage is designed for vacation living and has outdoor porches on all four elevations to catch the sun at any time of day. On the ground floor, the large living room has its own deck which forms a kind of outer entry to the house. The center of the first floor is occupied by the kitchen, which has a pass-through counter to the living room for informal dining. An adjacent, outdoor breakfast-dining porch can be served directly from the kitchen. Two bedrooms with their own sunning porch take up the rear of the floor. A double-lavatory bathroom is centrally located, easily accessible from any room. A second, outdoor shower is on the fourth deck, back to back with the bathroom for plumbing economy. A circular staircase leads to the second-floor bedroom and balcony. This extra bedroom space is one of the advantages of the second, higher A; another advantage is the natural light that is admitted to the lower floor by the narrow band of glass that is set in the overlapping frame.



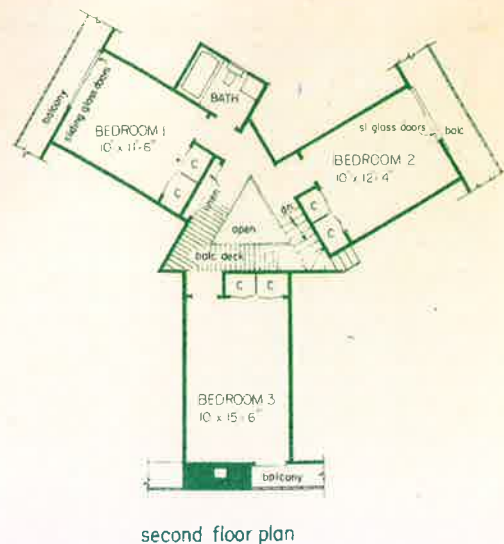
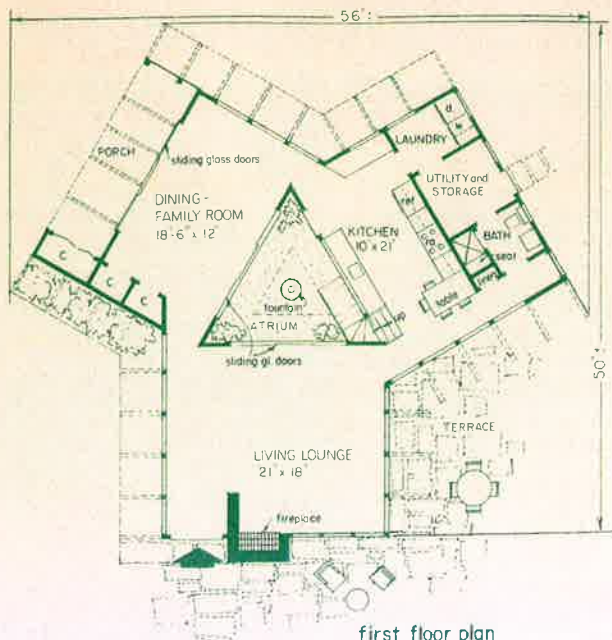


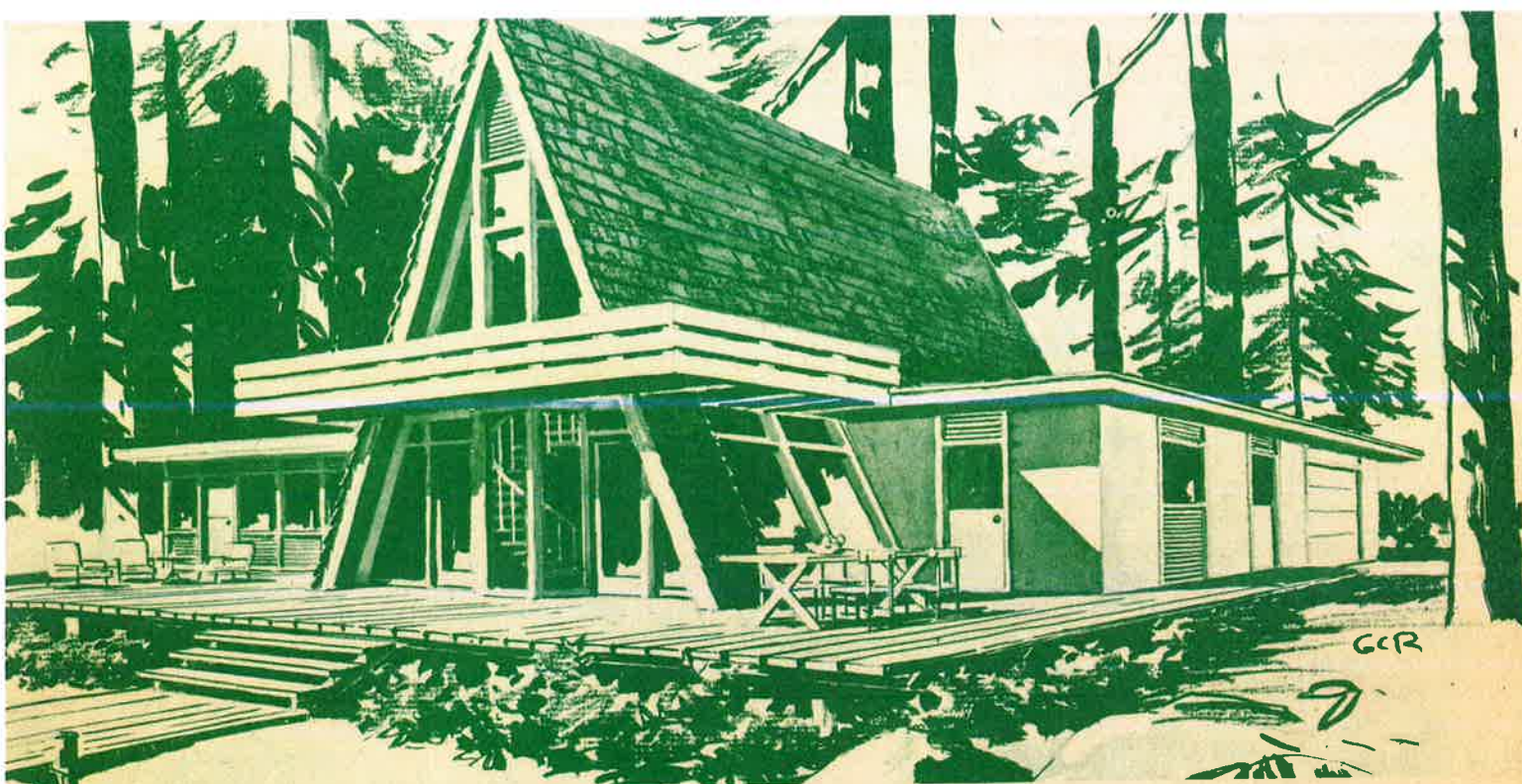
## THREE INTERCONNECTED A-FRAMES • AROUND A SUNNY ATRIUM

**PLAN P-992** — House area 1,097 sq. ft. on first floor excluding atrium and porch, 558 sq. ft. on second floor excluding balconies and deck.

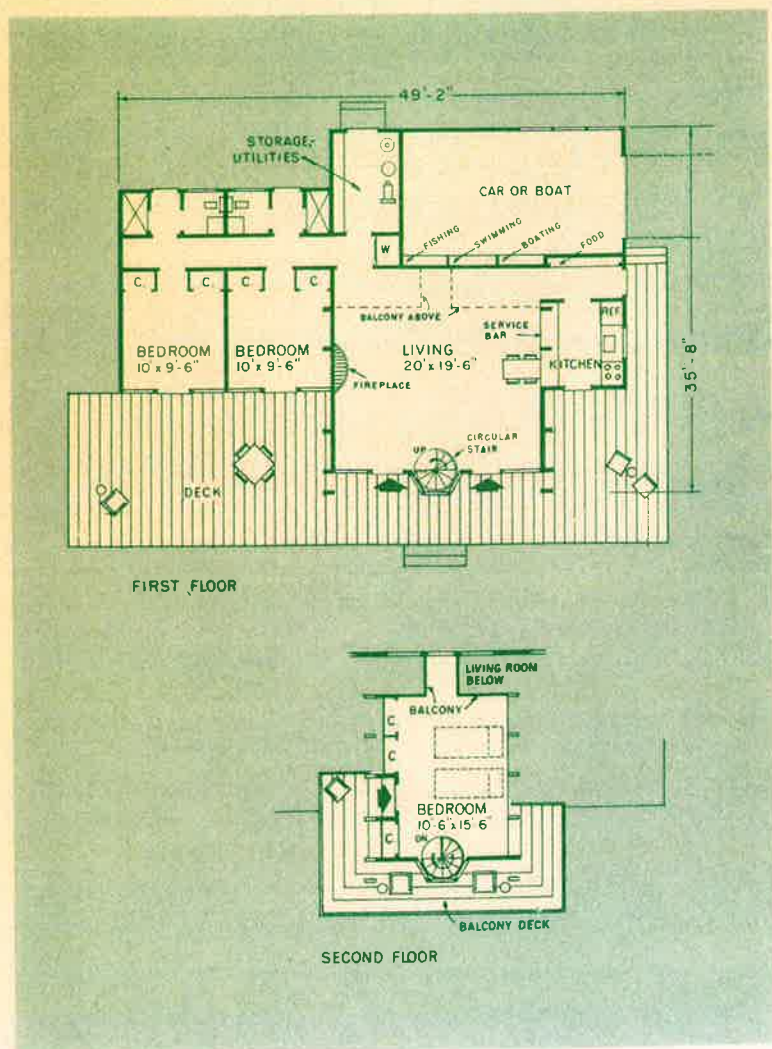
For those with a flair for the dramatic, this home is an ideal choice for a vacation or year-round retreat. The three "A"s provide space for living, dining and service. The service wing is well appointed: a central utility room has access from outdoors; it houses hot water and heating equipment. There is a laundry and a pleasant corridor kitchen. The central triangle into which the three wings face becomes the

open-air atrium. Upstairs the three "A"s also fall naturally into sleeping rooms and bath. An angled stairway goes up from the service area to a balcony which connects the bedrooms. Each has another balcony on the outside face, two of which have 6' sliding glass doors for access, light and ventilation. For full use of lower space, exterior design includes vertical glass walls around the perimeter at minimum headroom height; frame members continue down to the ground at their normal angles, adding exterior pattern.





## SECOND STORY DECK AND CIRCULAR STAIR ADD DRAMA



**PLAN P-869**—House area, 1,029 sq. ft. on first floor, 175 sq. ft. on deck level. This expandable A-Frame summer home can start off as a two-bedroom, one-bath design—and then you can add bedrooms and baths as simple box structures to the left as they are needed. Garage allows secure storage for a boat and other equipment. Circular stair saves interior space in providing ready access to the upper bedroom and deck. Bedroom balcony overlooks part of the living room. Showers in the bedroom wing are separate stall units, which can be reached from the outdoors. Large living room (almost 20 feet square) provides plenty of space for games, dining or entertaining. Rear wall of living area is glazed to add light.

