

BRIEF TIME LINE:

1911 GRAPEVIEW CONSOLIDATED SCHOOL DISTRICT #54 WAS FORMED by consolidating districts 23 (Detroit) and 30 (Mason Lake)

1911 - A NEW SCHOOL HOUSE WAS BUILT AT MCLANE'S COVE.

1911 - NOW TWO SCHOOL HOUSES ARE FUNCTIONING:

1. The ONE ROOM SCHOOL HOUSE that had been moved (in 1900) to its new site in DETROIT (also site of later 2 room Grapeview School)

2. The new MCLANE'S COVE School (later called Stadium School)

(The Mason Lake School had closed in 1909, and the little Hoke's school closed in 1911. The Mason Lake School was being kept in readiness and did re-opened in 1922 under control of District #54 and was called the "Madrona School".)

1918--A NEW TWO ROOM SCHOOL HOUSE (later called the Grapeview or Stadium School) WAS BUILT on the same site as the Detroit School.

The new school was situated farther back from the bank than the one room Detroit School--which still remained on the site and was used as a teacher's cottage.

1918--MCLANE'S COVE SCHOOL CLOSED

1921-1923--TWO SCHOOLS WERE OPERATING:

1. OLD MASON LAKE SCHOOL RE-OPENED

2. TWO ROOM GRAPEVIEW SCHOOL OPERATING
(Mclane's Cove School remained closed)

1923--MCLANE'S COVE SCHOOL HOUSE TO BE SOLD

1981--A NEW SIX-?-ROOM GRAPEVIEW SCHOOL HOUSE WAS BUILT NEAR SITE OF MASON LAKE (Madrona) SCHOOL HOUSE--(still in use 1994)

DESCRIPTION OF THE SCHOOL HOUSES:

MCLANE COVE SCHOOL HOUSE--ALSO CALLED THE STADIUM SCHOOL--
built in 1911
Bryan Rauschert--who attended the school from 1911 to 1918
gives a complete description of the school house and
grounds:

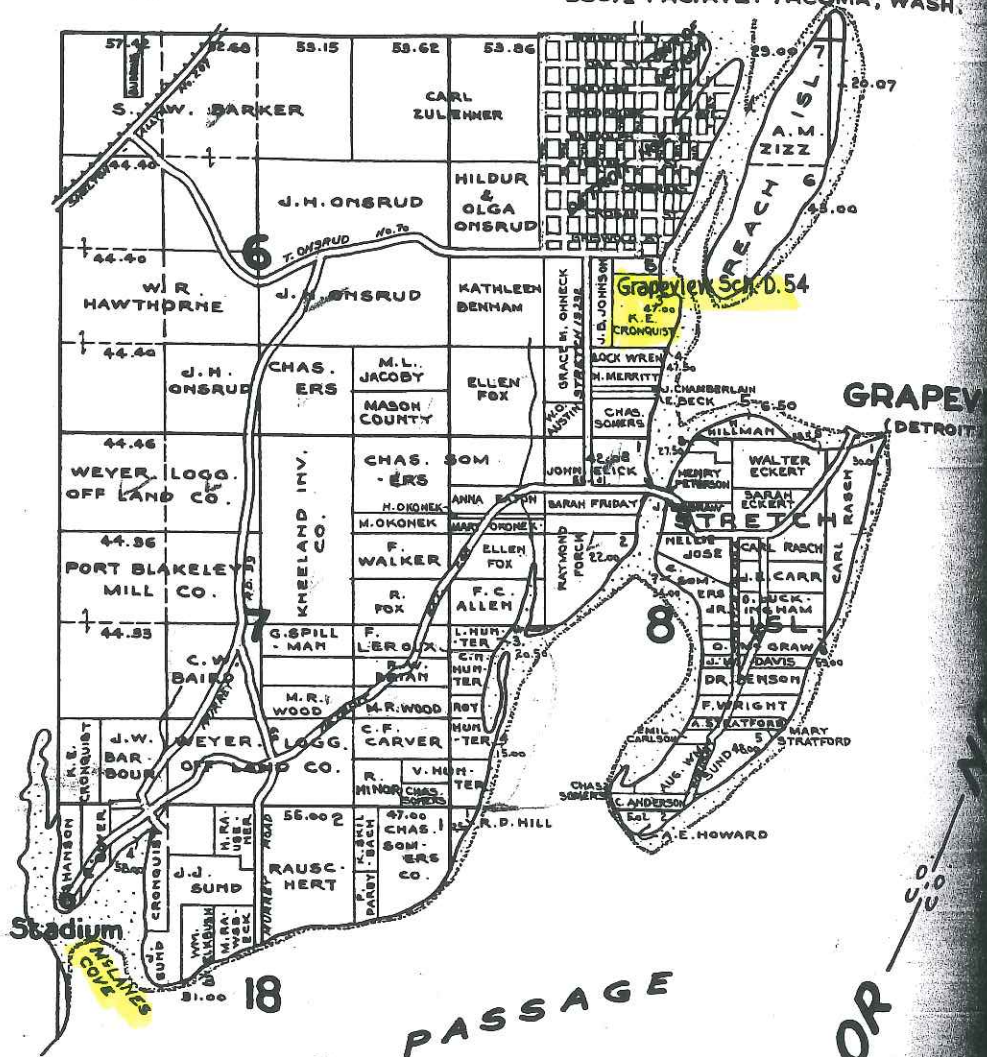
The McLane Cove School was located on the ^{Typo} East shore of
the Cove on a one acre plot, one corner of which touched the
shore of the Cove. It was built during the summer of 1911
by John Sund. The building, part of which still stands was
rectangular in shape about 15 x 24 with the long dimension
running North and South. There was a large bank of windows
on the East side facing the Cove. At the South end of the
room there was a large wood heater. A pendulum clock hung
on the South wall. A large wood box with a cover that
served as a seat was along the South wall next to the stove.
There was an organ near the teachers desk. Air was supplied
by pedals which were pumped while playing. The teachers
desk was in the Southwest corner. Several rows of desks
were for the pupils. There were blackboards on several of
the walls. A Websters Unabridged Dictionary rested on the
back of one row of desks. A partition across all of the
North end of the room closed off a small hall about 6 or 7
feet wide. This room had hooks for hanging clothes and also
served as a lunch room. The building had two out door
doors, one on the North end and one on the West side. There
was a door from the end hall to the school room. A dug well
in the yard with a hand pump supplied water. The first
year there was a single outdoor toilet. Later there were
two outdoor toilets. Wood in large slabs was provided.
Janitor service, wood splitting, etc. were the
responsibility of the teacher. There was a woven wire fence
around the school yard. A county road suitable for use by a
horse and buggy ended at the Hoke place. A trail from the
Hoke place used an old skid road for part of the way. From
there a trail followed a route laid out for a future road.

EVA BLAKE (WILLIS) attended the McLane Cove-Stadium school
from grades 4-9. She added to the above description as
follows:

The McLane Cove school house was about a mile and a
half from my step-father's farm called the Hoke place. The
school house had a row of windows overlooking the water with
a lovely view of Mount Rainier. There was a teacher's
cottage on the hill.

TOWN

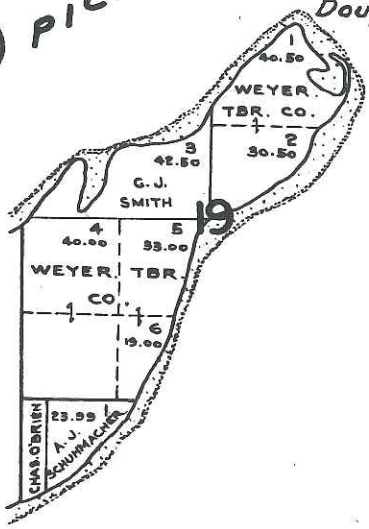
CHAS. F. METSKER CIVIL ENGINEER
990 1/2 PAC. AVE. TACOMA, WASH.



GRAPEV (DETROIT)

⑦

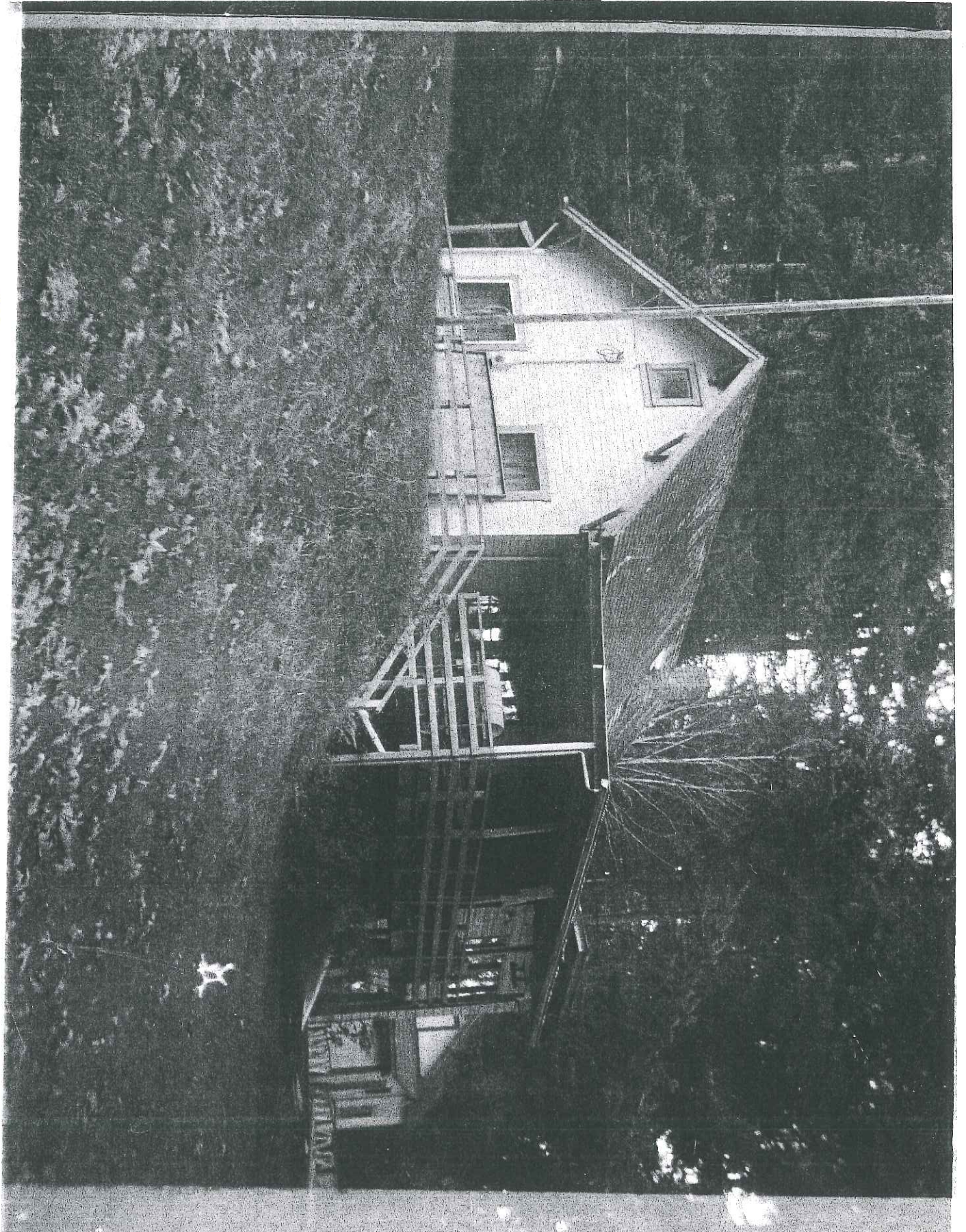
PICKERING PASSAGE



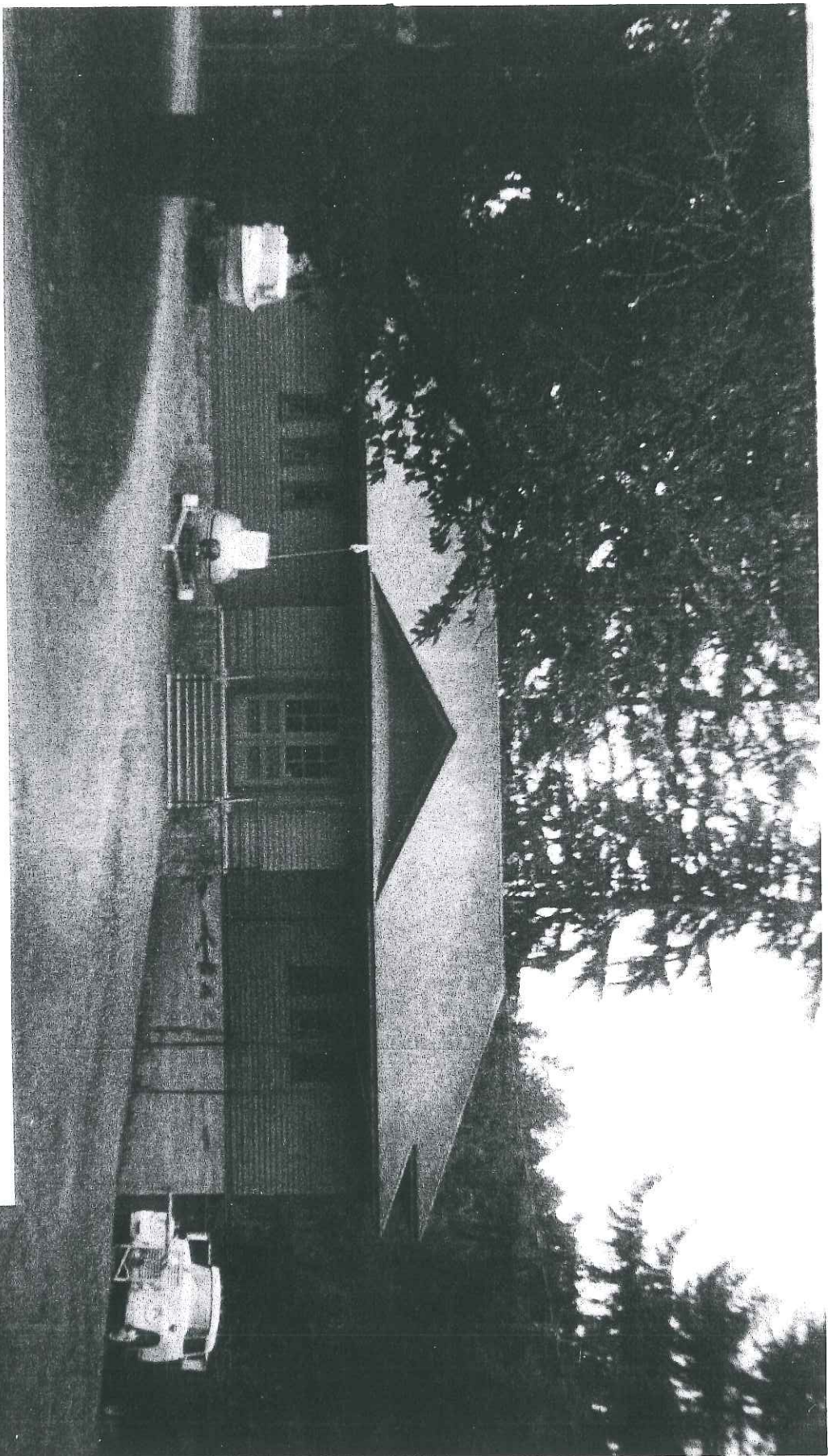
CASES INLET MASON PIERCE OR

HERRON

McLave School House Building, 1986



Grapeview School
1987
Dist. 54





221134170470

221131470860

221131300000

221131470570

221130060000

221131300000

221131460000

221131460000

T21 R2
13

T21 NR2W

T21 NR1W

221131400000

221131400000

221134170010

E STADIUM BEACH RD EAST

221134100010

221138888888

221134100100

221134190000

221134190000

221134100110